

| CODE DE COULEURS POUR TUBES | | |
|-----------------------------|---------------|--------------------------|
| ACTIF | COULEUR | SECONDAIRE |
| ROUGE | VERT | PRIMAIRE ET ALIMENTATION |
| BRUN | BLEU | FREIN DE STATIONNEMENT |
| NOIR ou BLANC | NOIR ou BLANC | SUSPENSION STANDARD |
| JAUNE | JAUNE | ACCESSOIRES |
| JAUNE | JAUNE | CONTROLE DU COMPRESSEUR |

LES LIGNES POINTILLEES ACCESSOIRES ONT UN CODE DE COULEUR TOUS NOIR, SAUF A EXCEPTION DU 'B' mm BLANC.
 LES LIGNES POINTILLEES REPRESENTENT LES TUBES A AIR POUR DES RACCORDES DE TYPE: PUSH-TO CONNECT
 LES LIGNES DOUBLES REPRESENTENT DES BOYAUX FLEXIBLES.

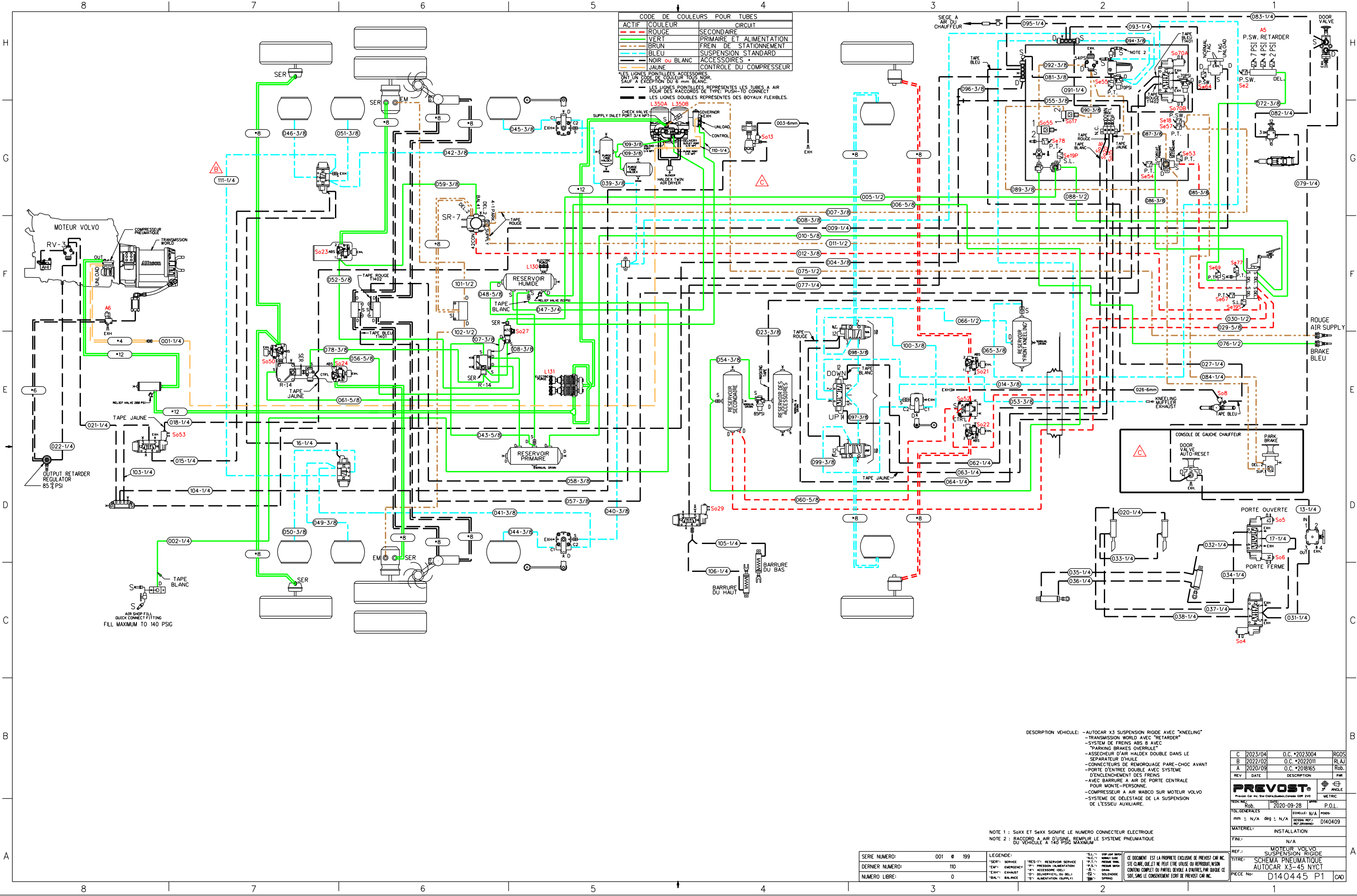
DESCRIPTION VEHICULE: -AUTOCAR X3 SUSPENSION RIGIDE AVEC "KNEELING"
 -TRANSMISSION WORLD AVEC "RETARDER"
 -SYSTEME DE FREINS ABS 8 AVEC "PARKING BRAKES OVERRULE"
 -ASSECHEUR D'AIR HALDEX DOUBLE DANS LE SEPARATEUR D'HUILE
 -CONNECTEURS DE REMORQUAGE PARE-CHOC AVANT
 -PORTE D'ENTREE DOUBLE AVEC SYSTEME D'ENCLICHEMENT DES FREINS
 -AVEC BARRURE A AIR DE PORTE CENTRALE POUR MONTE-PERSONNE.
 -COMPRESSEUR A AIR WABCO SUR MOTEUR VOLVO
 -SYSTEME DE DELESTAGE DE LA SUSPENSION DE L'ESSIE AUXILIAIRE.

NOTE 1 : Soxx ET Sexx SIGNIFIE LE NUMERO CONNECTEUR ELECTRIQUE
 NOTE 2 : RACCORDER A AIR D'USINE, REMPLIR LE SYSTEME PNEUMATIQUE DU VEHICULE A 140 PSIG MAXIMUM

| | |
|-----------------|-----------|
| SERIE NUMERO: | 001 0 199 |
| DERNIER NUMERO: | 110 |
| NUMERO LIBRE: | 0 |

| | | |
|----------------|----------------------------|-------------------------|
| LEGENDE: | "RES-11" RESERVOIR SERVICE | "S.L." STOP AIR SUPPLY |
| "EM" EMERGENCY | "P.T." PRESSURE TRANSDUCER | "S.P." SERVICE PRESSURE |
| "EXH" EXHAUST | "A" ACCESSOIRE (OIL) | "D" DRAIN |
| "BAL" BALANCE | "D" DELIVERIE (OU DEL.) | "S" SOLÉNOÏDE |
| | "S" ALIMENTATION (SUPPLY) | "SP" SPRING |

| | | |
|--|--------------|-----------|
| REV. DATE | DESCRIPTION | PAR |
| A 2020/09 | O.C.*2018165 | Rob |
| PREVOST | | |
| Prevost Car Inc. Site: Châteauguay, Québec G0R 2V0 | | |
| TECH. NO.: | 2020-09-28 | P.O.L. |
| VOL. GÉNÉRALES | | |
| mm ± | N/A | deg ± N/A |
| MATERIEL: INSTALLATION | | |
| FINI: N/A | | |
| REF.: MOTEUR VOLVO SUSPENSION RIGIDE | | |
| TITRE: SCHEMA PNEUMATIQUE AUTOCAR X3-45 NYCT | | |
| PIECE NO: D140445 P1 | | |



CODE DE COULEURS POUR TUBES

| | | |
|-------|---------------|--------------------------|
| ACTIF | ROUGE | SECONDAIRE |
| VERT | BRUN | PRIMAIRE ET ALIMENTATION |
| BLEU | NOIR ou BLANC | FREIN DE STATIONNEMENT |
| JAUNE | | SUSPENSION STANDARD |
| | | ACCESSOIRES |
| | | CONTROLE DU COMPRESSEUR |

LES LIGNES POINTILLEES ACCESSOIRES ONT UN CODE DE COULEUR TOUS NOIR, SAUF A L'EXCEPTION DU BLANC.

LES LIGNES POINTILLEES REPRESENTENT LES TUBES A AIR POUR DES RACCORDES DE TYPE: PUSH-TO CONNECT

LES LIGNES DOUBLES REPRESENTENT DES BOYAUX FLEXIBLES.

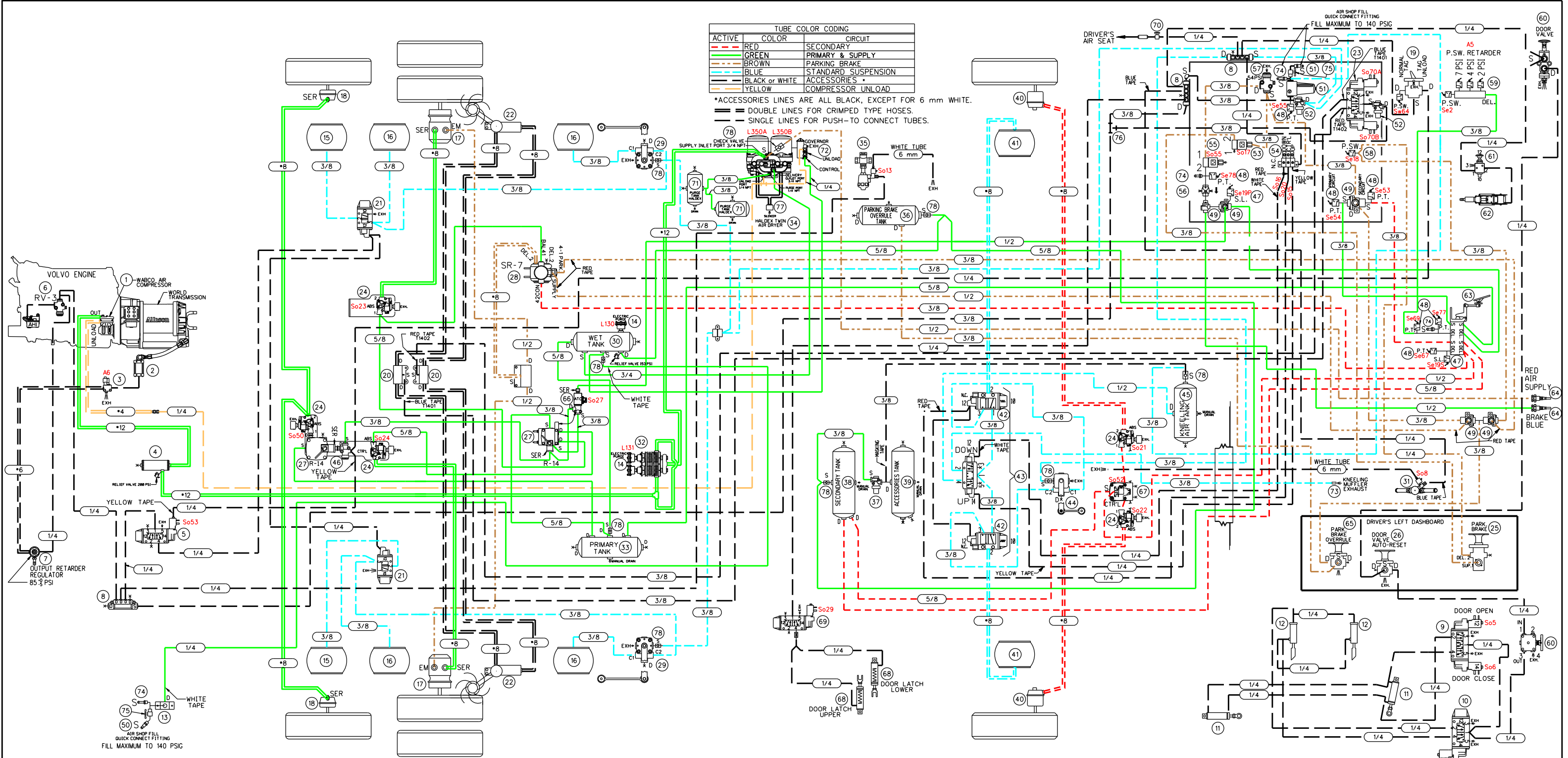
DESCRIPTION VEHICULE: -AUTOCAR X3 SUSPENSION RIGIDE AVEC "KNEELING"
 -TRANSMISSION WORLD AVEC "RETARDER"
 -SYSTEME DE FREINS ABS 8 AVEC "PARKING BRAKES OVERRIDE"
 -ASSECHEUR D'AIR HALDEX DOUBLE DANS LE SEPARATEUR D'HUILE
 -PORTE D'ENTREE DOUBLE AVEC SYSTEME D'ENCLICHEMENT DES FREINS
 -AVEC BARRURE A AIR DE PORTE CENTRALE POUR MONTE-PERSONNE.
 -COMPRESSEUR A AIR WABCO SUR MOTEUR VOLVO
 -SYSTEME DE DELESTAGE DE LA SUSPENSION DE L'ESSEU AUXILIAIRE.

NOTE 1 : SoXX ET SeXX SIGNIFIE LE NUMERO CONNECTEUR ELECTRIQUE
 NOTE 2 : RACCORDE A AIR D'USINE, REMPLIR LE SYSTEME PNEUMATIQUE DU VEHICULE A 140 PSIG MAXIMUM

| | |
|-----------------|-----------|
| SERIE NUMERO: | 001 0 199 |
| DERNIER NUMERO: | 110 |
| NUMERO LIBRE: | 0 |

| | | |
|-----------------------|----------------------------|-----------------------------|
| LEGENDE: | "RES-1": RESERVOIR SERVICE | "S.L.": SUP. LITRE |
| "EM": EMERGENCY | "P.1": MOTOR PARK | "S.M.": SERVICE MOTEUR |
| "A": ACCESSOIRE (DEL) | "P.2": MOTOR PARK | "S.P.": SERVICE PNEUMATIQUE |
| "E": EXHAUST | "D": DISTRIBUTION (OU DEL) | "A": AIR |
| "BAL": BALANCE | "S": SPRING | "S.S.": SPRING SERVICE |

| | | | |
|--|---------------------------------------|---------------|------------|
| C | 2023/04 | O.C. #2023004 | RGOS |
| B | 2022/02 | O.C. #2022011 | RLAJ |
| A | 2020/09 | O.C. #2018165 | Rob. |
| REV | DATE | DESCRIPTION | PAR |
| PREVOST | | | |
| PREVOST Car Inc. 516-Club-Quatre-COOP 2100 | | | |
| TECH. ING. | Rob. | DATE | 2020-09-28 |
| TOL. GENERALES | mm | deg | N/A |
| MATERIEL: | INSTALLATION | | |
| FINI: | N/A | | |
| REF.: | MOTEUR VOLVO SUSPENSION RIGIDE | | |
| TITRE: | SCHEMA PNEUMATIQUE AUTOCAR X3-45 NYCT | | |
| PIECE NO: | D140445 P1 | | |



| ACTIVE | COLOR | CIRCUIT |
|--------|----------------|---------------------|
| --- | RED | SECONDARY |
| --- | GREEN | PRIMARY & SUPPLY |
| --- | BROWN | PARKING BRAKE |
| --- | BLUE | STANDARD SUSPENSION |
| --- | BLACK or WHITE | ACCESSORIES |
| --- | YELLOW | COMPRESSOR UNLOAD |

* ACCESSORIES LINES ARE ALL BLACK, EXCEPT FOR 6 mm WHITE.
 --- DOUBLE LINES FOR CRIMPED TYPE HOSES.
 --- SINGLE LINES FOR PUSH-TO CONNECT TUBES.

| | | | |
|---|---|---|--|
| 020 ROTATIVE CHAIN SYSTEM BLOC MANIFOLD | 040 FRONT BRAKE CHAMBER, KNORR TYPE 24 | 060 ENTRANCE DOOR MANUAL VALVE, NORGREN D-PRO V82 | 080 |
| 019 LIFT TAG AXLE VALVE BENDIX, TW-1 | 039 ACCESSORIES AIR TANK, JOHNSON WELDING | 059 PRESSURE SWITCH N.O. ALLISON | 079 |
| 018 TAG AXLE BRAKE CHAMBER, KNORR, TYPE 14 | 038 SECONDARY AIR TANK, JOHNSON WELDING | 058 PRESSURE SWITCH N.C. KLIXON | 078 CHECK VALVE |
| 017 DRIVE AXLE BRAKE CHAMBER, KNORR TYPE 24/24 | 037 PROTECTION VALVE, BENDIX PR-4, 85 PSI | 057 PRESSURE REDUCING VALVE, BENDIX RV-3 | 077 SILENCER HALDEX AIR DRYER |
| 016 DRIVE AXLE AIR SPRING GOODYEAR, TR11 | 036 PARKING BRAKE OVERRULE AIR TANK, JOHNSON WELDING | 056 IN-LINE QUICK RELEASE VALVE BENDIX, QR-L | 076 FLOATING TEE FITTING |
| 015 TAG AXLE AIR SPRING GOODYEAR, TR12 | 035 3-WAYS HEATER VALVE SOLENOID BURKERT, SYSTEM 2006 | 055 SOLENOID ENTRANCE DOOR INTERLOCK PARKER 7131 | 075 AIR MANUAL VALVE ON-OFF |
| 014 ELECTRIC PURGE HALDEX OIL SEPARATOR | 034 HALDEX TWIN AIR DRYER | 054 MANIFOLD VALVE NORGREN D004.3 | 074 SCHRADER VALVE 645-LB GATES |
| 013 REAR AIR FILL VALVE | 033 PRIMARY AIR TANK, JOHNSON WELDING | 053 PARKING BRAKE INTERLOCK, PARKER 7131 | 073 KNEELING MUFFLER EXHAUST |
| 012 ENTRANCE DOOR LOCK CYLINDER Bimba, 7/8" DIA X 5" STROKE | 032 OIL SEPARATOR, HALDEX CONSEP | 052 PROTECTION VALVE, BENDIX PR-4, 70 PSI | 072 GOVERNOR FOR AIR COMPRESSOR WABCO |
| 011 ENTRANCE DOOR CYLINDER Bimba, 2.5" DIA X 5" STROKE | 031 2-WAYS HEATER VALVE SOLENOID ASCO, SYSTEM 2014 | 051 AIR FILTER ASCO NUMATICS 71035 | 071 PURGE TANK HALDEX WITH MANUAL DRAIN VALVE |
| 010 ENTRANCE DOOR LOCK SOLENOID VALVE NORGREN, V60 | 030 WET TANK, JOHNSON WELDING | 050 QUICK CONNECT FITTING AIR HOSE | 070 DRIVER AIR SEAT MANUAL VALVE |
| 009 ENTRANCE DOOR BY-FOLD SOLENOID VALVE NORGREN, V60 | 029 REAR HEIGHT CONTROL VALVE, BARKSDALE 52341 | 049 DOUBLE CHECK VALVE, BENDIX DC-4 | 069 WHEEL CHAIR LIFT DOOR LOCK SOLENOID VALVE NORGREN, V60 |
| 008 AIR MANIFOLD BLOC, PARKER 24M | 028 I VALVE FOR PARKING BRAKE, BENDIX SR-7 | 048 PRESSURE TRANSDUCER, VOLVO | 068 WHEEL CHAIR LIFT DOOR LOCK CYLINDER Bimba, 1.75" DIA X 1" STROKE |
| 007 REGULATOR OUTPUT RETARDER, NORGREN RO6 | 027 VALVE FOR SERVICE BRAKE, BENDIX R-14 | 047 STOP LIGHT SWITCH, BENDIX | 067 FRONT BRAKES VALVES, BENDIX RELAY VALVE ATR-6 |
| 006 PRESSURE REDUCTOR VALVE AHI, BENDIX RV-3 | 026 DOOR VALVE AUTO-RESET | 046 INVERSION VALVE, BENDIX TR-3 | 066 BENDIX ATC VALVE |
| 005 TAG UNLOAD VALVE, NORGREN V60 | 025 PARKING BRAKE VALVE BENDIX, PP-1 | 045 KNEELING AIR TANK, JOHNSON WELDING | 065 EMERGENCY PARKING BRAKE OVERRULE VALVE, BENDIX RD-3 |
| 004 PING TANK, JOHNSON WELDING | 024 ABS VALVE MODULATOR BENDIX M40-OR WITH SILENCER | 044 FRONT HEIGHT CONTROL VALVE, BARKSDALE 52341 | 064 QUICK COUPLING PARKER, L2C |
| 003 ALLISON SOLENOID VALVE | 023 ROTATIVE CHAIN SYSTEM DRIVE AXLE SOLENOID | 043 KNEELING SUSPENSION VALVE, NORGREN NUGGET 200 | 063 BRAKE VALVE PEDAL BENDIX, E-10P |
| 002 ALLISON TRANSMISSION RETARDER CYLINDER | 022 SWIVEL CHAIN UNIT WITH ARM ASSEMBLY | 042 KNEELING SUSPENSION VALVE, NORGREN NUGGET 200 | 062 STEERING WHEEL COLUMN, ZF |
| 001 AIR COMPRESSOR WABCO 636 | 021 REAR SUSPENSION VALVE NORGREN, NUGGET 200 | 041 FRONT AIR SPRING, GOODYEAR 1R12 | 061 ADJUSTABLE STEERING WHEEL MANUAL VALVE, MAC 1111A-032 |
| ITEM DESCRIPTION | ITEM DESCRIPTION | ITEM DESCRIPTION | ITEM DESCRIPTION |

VEHICLE DESCRIPTION : --COACH X3 WITH FRONT BEAM AXLE SUSPENSION
 --SUSPENSION FRONT KNEELING SYSTEM
 --TRANSMISSION WORLD WITH "RETARDER"
 --ABS BRAKE SYSTEM WITH "PARKING BRAKES OVERRULE"
 --HALDEX TWIN AIR DRYER WITH HALDEX OIL SEPARATOR
 --TOWING QUICK CONNECT FRONT BUMPER
 --BY-FOLD ENTRANCE DOOR WITH INTERLOCK BRAKE SYSTEM
 --WITH WHEEL CHAIR LIFT DOOR AIR LOCK
 --AIR COMPRESSOR WABCO DIRECT DRIVE ON VOLVO ENGINE
 --UNLOAD TAG SUSPENSION SYSTEM

NOTE 1 : SoXX AND SoXX ARE ELECTRIC CONNECTORS NAME TAG.

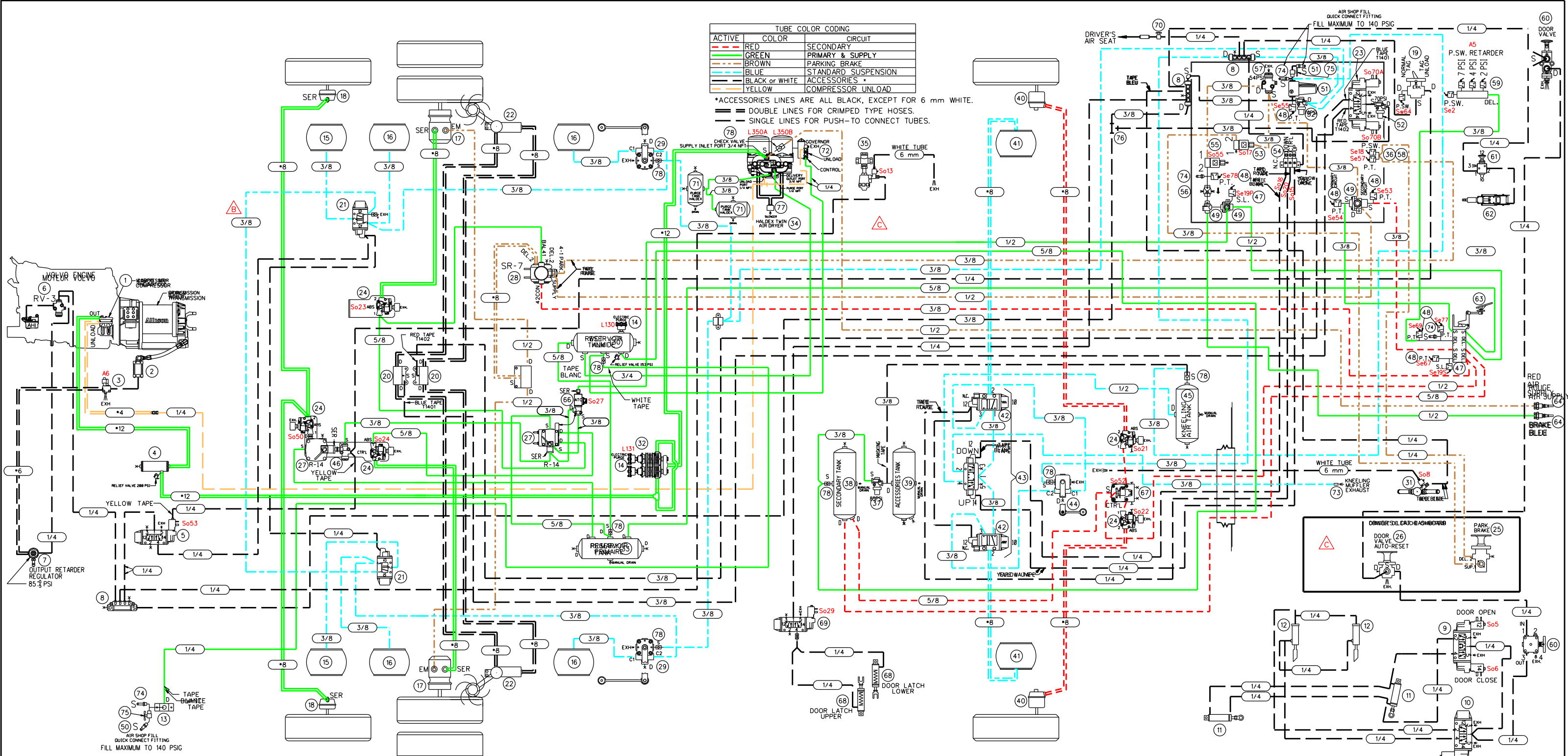
| LEGENDE: | | | |
|-----------------|------------------------------|-------------------|----------------|
| "SER": SERVICE | "P": PRESSURE (ALIMENTATION) | "S": SUPPLY (AIR) | "EXH": EXHAUST |
| "EM": EMERGENCY | "A": ACCESSOIRE (OEL) | "D": DRAIN | "BAL": BALANCE |
| "EXH": EXHAUST | "S": ALIMENTATION (SUPPLY) | "SPR": SPRING | |

PREVOST

COMPLETE SYSTEM

REV.: A
 DATE: 2020/09/28

PAGE:
 D140445 P2



| ACTIVE | COLOR | SECONDARY | CIRCUIT |
|--------|----------------|-----------|---------------------|
| — | RED | — | SECONDARY |
| — | GREEN | — | PRIMARY & SUPPLY |
| — | BROWN | — | PARKING BRAKE |
| — | BLUE | — | STANDARD SUSPENSION |
| — | BLACK or WHITE | — | ACCESSORIES |
| — | YELLOW | — | COMPRESSOR UNLOAD |

*ACCESSORIES LINES ARE ALL BLACK, EXCEPT FOR 6 mm WHITE.
 — DOUBLE LINES FOR CRIMPED TYPE HOSES.
 — SINGLE LINES FOR PUSH-TO CONNECT TUBES.

| | | | |
|---|---|---|--|
| 020 ROTATIVE CHAIN SYSTEM BLOC MANIFOLD | 040 FRONT BRAKE CHAMBER, KNORR TYPE 24 | 060 ENTRANCE DOOR MANUAL VALVE, NORGREN D-PRO V82 | 080 |
| 019 LIFT TAG AXLE VALVE, BENDIX, TW-1 | 039 ACCESSORIES AIR TANK, JOHNSON WELDING | 059 PRESSURE SWITCH N.O. ALLISON | 079 |
| 018 TAG AXLE BRAKE CHAMBER, KNORR, TYPE 14 | 038 SECONDARY AIR TANK, JOHNSON WELDING | 058 PRESSURE SWITCH N.C. KLIXON | 078 CHECK VALVE |
| 017 DRIVE AXLE BRAKE CHAMBER, KNORR TYPE 24/24 | 037 PROTECTION VALVE, BENDIX PR-4, 85 PSI | 057 PRESSURE REDUCING VALVE, BENDIX RV-3 | 077 SILENCER HALDEX AIR DRYER |
| 016 DRIVE AXLE AIR SPRING GOODYEAR, TR11 | 036 PRESSURE TRANSDUCER (0-12 BAR) | 056 INLINE QUICK RELEASE VALVE BENDIX, OR-L | 076 FLOATING TEE FITTING |
| 015 TAG AXLE AIR SPRING GOODYEAR, TR12 | 035 3-WAYS HEATER VALVE SOLENOID BURKERT, SYSTEM 2006 | 055 SOLENOID ENTRANCE DOOR INTERLOCK PARKER 7131 | 075 AIR MANUAL VALVE ON-OFF |
| 014 ELECTRIC PURGE HALDEX OIL SEPARATOR | 034 HALDEX TWIN AIR DRYER | 054 MANIFOLD VALVE NORGREN D0043 | 074 SCHRADER VALVE 645-LB GATES |
| 013 REAR AIR FILL VALVE | 033 PRIMARY AIR TANK, JOHNSON WELDING | 053 PARKING BRAKE INTERLOCK, PARKER 7131 | 073 KNEELING MUFFLER EXHAUST |
| 012 ENTRANCE DOOR LOCK CYLINDER Bimba, 7/8" DIA X 5" STROKE | 032 OIL SEPARATOR, HALDEX CONSEP | 052 PROTECTION VALVE, BENDIX PR-4, 70 PSI | 072 GOVERNOR FOR AIR COMPRESSOR WABCO |
| 011 ENTRANCE DOOR CYLINDER Bimba, 2.5" DIA X 5" STROKE | 031 2-WAYS HEATER VALVE SOLENOID ASCO, SYSTEM 2014 | 051 AIR FILTER ASCO NUMATICS 71035 | 071 PURGE TANK HALDEX WITH MANUAL DRAIN VALVE |
| 010 ENTRANCE DOOR LOCK SOLENOID VALVE, NORGREN, V60 | 030 WET TANK, JOHNSON WELDING | 050 QUICK CONNECT FITTING AIR HOSE | 070 DRIVER AIR SEAT MANUAL VALVE |
| 009 ENTRANCE DOOR BY-FOLD SOLENOID VALVE, NORGREN, V60 | 029 REAR HEIGHT CONTROL VALVE, BARKSDALE 52341 | 049 DOUBLE CHECK VALVE, BENDIX DC-4 | 069 WHEEL CHAIR LIFT DOOR LOCK SOLENOID VALVE, NORGREN, V60 |
| 008 AIR MANIFOLD BLOC, PARKER 24M | 028 VALVE FOR PARKING BRAKE, BENDIX SR-7 | 048 PRESSURE TRANSDUCER, VOLVO | 068 WHEEL CHAIR LIFT DOOR LOCK CYLINDER Bimba, 1.75" DIA X 1" STROKE |
| 007 REGULATOR OUTPUT RETARDER, NORGREN R06 | 027 VALVE FOR SERVICE BRAKE, BENDIX R-14 | 047 STOP LIGHT SWITCH, BENDIX | 067 FRONT BRAKES VALVES, BENDIX RELAY VALVE ATR-6 |
| 006 PRESSURE REDUCTOR VALVE AHI, BENDIX RV-3 | 026 DOOR VALVE AUTO-RESET | 046 INVERSION VALVE, BENDIX TR-3 | 066 BENDIX ATC VALVE |
| 005 TAG UNLOAD VALVE, NORGREN V60 | 025 PARKING BRAKE VALVE BENDIX, PP-1 | 045 KNEELING AIR TANK, JOHNSON WELDING | 065 |
| 004 PING TANK, JOHNSON WELDING | 024 ABS VALVE MODULATOR BENDIX M40-OR WITH SILENCER | 044 FRONT HEIGHT CONTROL VALVE, BARKSDALE 52341 | 064 QUICK COUPLING PARKER, L2C |
| 003 ALLISON SOLENOID VALVE | 023 ROTATIVE CHAIN SYSTEM DRIVE AXLE SOLENOID | 043 KNEELING SUSPENSION VALVE, NORGREN NUGGET 200 | 063 BRAKE VALVE PEDAL BENDIX, E-10P |
| 002 ALLISON TRANSMISSION RETARDER CYLINDER | 022 SWIVEL CHAIN UNIT WITH ARM ASSEMBLY | 042 KNEELING SUSPENSION VALVE, NORGREN NUGGET 200 | 062 STEERING WHEEL COLUMN, ZF |
| 001 AIR COMPRESSOR WABCO 636 | 021 REAR SUSPENSION VALVE NORGREN, NUGGET 200 | 041 FRONT AIR SPRING, GOODYEAR 1R12 | 061 ADJUSTABLE STEERING WHEEL MANUAL VALVE, MAC 1111A-032 |

NOTE 1 : SoXX AND SeXX ARE ELECTRIC CONNECTORS NAME TAG.

| LEGENDE : | RES-1 : | RES-2 : | RES-3 : | RES-4 : | RES-5 : | RES-6 : | RES-7 : | RES-8 : | RES-9 : | RES-10 : | RES-11 : | RES-12 : | RES-13 : | RES-14 : | RES-15 : | RES-16 : | RES-17 : | RES-18 : | RES-19 : | RES-20 : | RES-21 : | RES-22 : | RES-23 : | RES-24 : | RES-25 : | RES-26 : | RES-27 : | RES-28 : | RES-29 : | RES-30 : | RES-31 : | RES-32 : | RES-33 : | RES-34 : | RES-35 : | RES-36 : | RES-37 : | RES-38 : | RES-39 : | RES-40 : | RES-41 : | RES-42 : | RES-43 : | RES-44 : | RES-45 : | RES-46 : | RES-47 : | RES-48 : | RES-49 : | RES-50 : | RES-51 : | RES-52 : | RES-53 : | RES-54 : | RES-55 : | RES-56 : | RES-57 : | RES-58 : | RES-59 : | RES-60 : | RES-61 : | RES-62 : | RES-63 : | RES-64 : | RES-65 : | RES-66 : | RES-67 : | RES-68 : | RES-69 : | RES-70 : | RES-71 : | RES-72 : | RES-73 : | RES-74 : | RES-75 : | RES-76 : | RES-77 : | RES-78 : | RES-79 : | RES-80 : | RES-81 : | RES-82 : | RES-83 : | RES-84 : | RES-85 : | RES-86 : | RES-87 : | RES-88 : | RES-89 : | RES-90 : | RES-91 : | RES-92 : | RES-93 : | RES-94 : | RES-95 : | RES-96 : | RES-97 : | RES-98 : | RES-99 : | RES-100 : |
|-----------|---------|---------|---------|---------|---------|---------|---------|---------|---------|----------|----------|----------|----------|----------|----------|----------|----------|----------|----------|----------|----------|----------|----------|----------|----------|----------|----------|----------|----------|----------|----------|----------|----------|----------|----------|----------|----------|----------|----------|----------|----------|----------|----------|----------|----------|----------|----------|----------|----------|----------|----------|----------|----------|----------|----------|----------|----------|----------|----------|----------|----------|----------|----------|----------|----------|----------|----------|----------|----------|----------|----------|----------|----------|----------|----------|----------|----------|----------|----------|----------|----------|----------|----------|----------|----------|----------|----------|----------|----------|----------|----------|----------|----------|----------|----------|----------|----------|----------|----------|-----------|
| SER : | RES-1 : | RES-2 : | RES-3 : | RES-4 : | RES-5 : | RES-6 : | RES-7 : | RES-8 : | RES-9 : | RES-10 : | RES-11 : | RES-12 : | RES-13 : | RES-14 : | RES-15 : | RES-16 : | RES-17 : | RES-18 : | RES-19 : | RES-20 : | RES-21 : | RES-22 : | RES-23 : | RES-24 : | RES-25 : | RES-26 : | RES-27 : | RES-28 : | RES-29 : | RES-30 : | RES-31 : | RES-32 : | RES-33 : | RES-34 : | RES-35 : | RES-36 : | RES-37 : | RES-38 : | RES-39 : | RES-40 : | RES-41 : | RES-42 : | RES-43 : | RES-44 : | RES-45 : | RES-46 : | RES-47 : | RES-48 : | RES-49 : | RES-50 : | RES-51 : | RES-52 : | RES-53 : | RES-54 : | RES-55 : | RES-56 : | RES-57 : | RES-58 : | RES-59 : | RES-60 : | RES-61 : | RES-62 : | RES-63 : | RES-64 : | RES-65 : | RES-66 : | RES-67 : | RES-68 : | RES-69 : | RES-70 : | RES-71 : | RES-72 : | RES-73 : | RES-74 : | RES-75 : | RES-76 : | RES-77 : | RES-78 : | RES-79 : | RES-80 : | RES-81 : | RES-82 : | RES-83 : | RES-84 : | RES-85 : | RES-86 : | RES-87 : | RES-88 : | RES-89 : | RES-90 : | RES-91 : | RES-92 : | RES-93 : | RES-94 : | RES-95 : | RES-96 : | RES-97 : | RES-98 : | RES-99 : | RES-100 : |

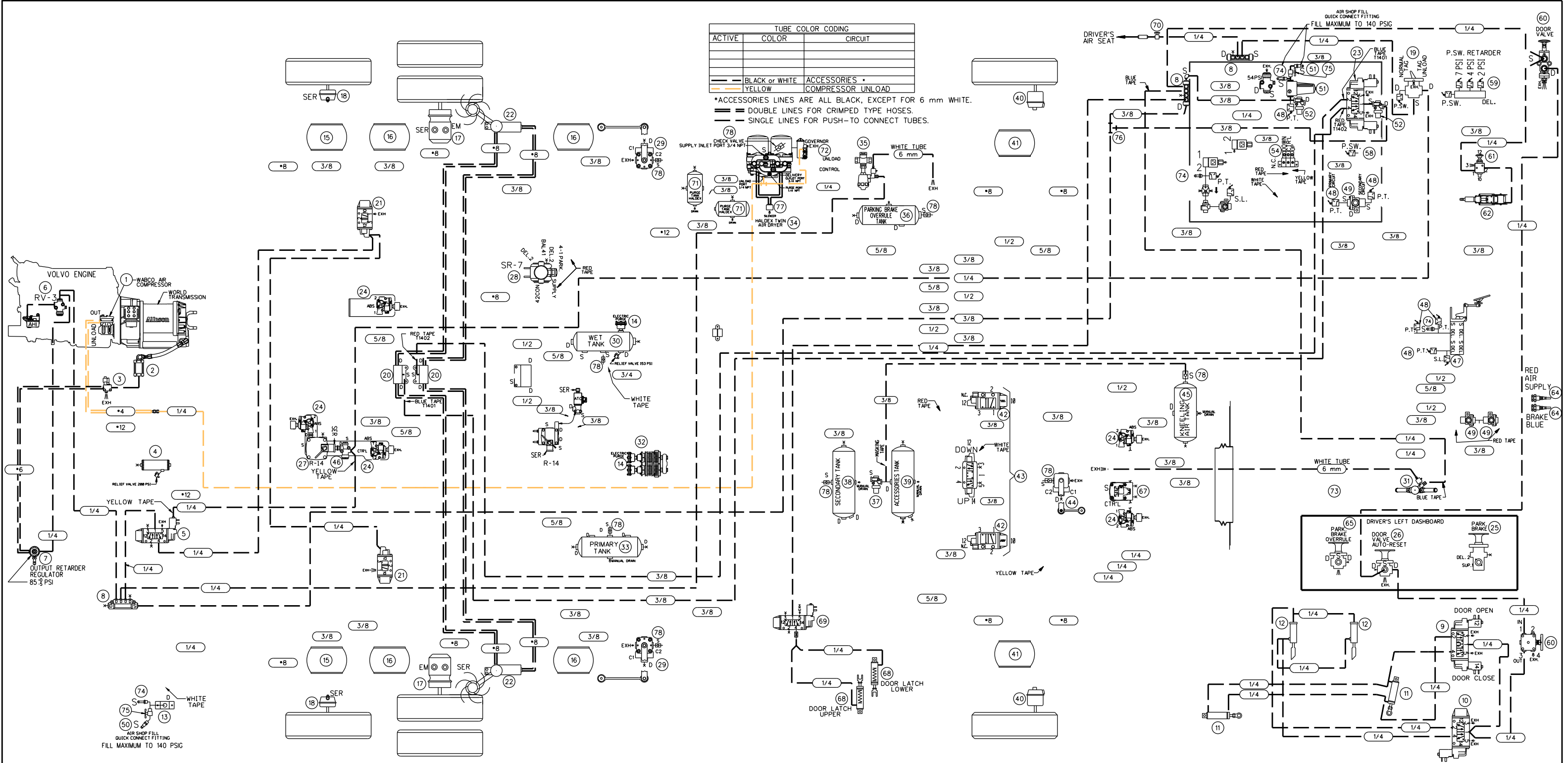
VEHICLE DESCRIPTION : -COACH X3 WITH FRONT BEAM AXLE SUSPENSION
 -SUSPENSION FRONT KNEELING SYSTEM
 -TRANSMISSION WORLD WITH "RETARDER"
 -ABS 8 BRAKE SYSTEM WITH "PARKING BRAKES" OVERRULE
 -HALDEX TWIN AIR DRYER WITH HALDEX OIL SEPARATOR
 -TOWING QUICK CONNECT FRONT BUMPER
 -BY-FOLD ENTRANCE DOOR WITH INTERLOCK BRAKE SYSTEM
 -WITH WHEEL CHAIR LIFT DOOR AIR LOCK
 -AIR COMPRESSOR WABCO DIRECT DRIVE ON VOLVO ENGINE
 -UNLOAD TAG SUSPENSION SYSTEM



DESCRIPTION: COMPLETE SYSTEM

REV.: C
 DATE: 2022/02/15

PAGE: D140445 P2



| TUBE COLOR CODING | | |
|-------------------|----------------|-------------------|
| ACTIVE | COLOR | CIRCUIT |
| — | BLACK or WHITE | ACCESSORIES |
| — | YELLOW | COMPRESSOR UNLOAD |

*ACCESSORIES LINES ARE ALL BLACK, EXCEPT FOR 6 mm WHITE.
 — DOUBLE LINES FOR CRIMPED TYPE HOSES.
 — SINGLE LINES FOR PUSH-TO CONNECT TUBES.

| | | | |
|---|---|---|--|
| 020 ROTATIVE CHAIN SYSTEM BLOC MANIFOLD | 040 FRONT BRAKE CHAMBER, KNORR TYPE 24 | 060 ENTRANCE DOOR MANUAL VALVE, NORGREN D-PRO V82 | 080 |
| 019 LIFT TAG AXLE VALVE BENDIX, TW-1 | 039 ACCESSORIES AIR TANK, JOHNSON WELDING | 059 PRESSURE SWITCH N.O. ALLISON | 079 |
| 018 TAG AXLE BRAKE CHAMBER, KNORR, TYPE 14 | 038 SECONDARY AIR TANK, JOHNSON WELDING | 058 PRESSURE SWITCH N.C. KLIXON | 078 CHECK VALVE |
| 017 DRIVE AXLE BRAKE CHAMBER, KNORR TYPE 24/24 | 037 PROTECTION VALVE, BENDIX PR-4, 85 PSI | 057 PRESSURE REDUCING VALVE, BENDIX RV-3 | 077 SILENCER HALDEX AIR DRYER |
| 016 DRIVE AXLE AIR SPRING GOODYEAR, TR11 | 036 PARKING BRAKE OVERRULE AIR TANK, JOHNSON WELDING | 056 INLINE QUICK RELEASE VALVE BENDIX, QR-L | 076 FLOATING TEE FITTING |
| 015 TAG AXLE AIR SPRING GOODYEAR, TR12 | 035 3-WAYS HEATER VALVE SOLENOID BURKERT, SYSTEM 2006 | 055 SOLENOID ENTRANCE DOOR INTERLOCK PARKER 7131 | 075 AIR MANUAL VALVE ON-OFF |
| 014 ELECTRIC PURGE HALDEX OIL SEPARATOR | 034 HALDEX TWIN AIR DRYER | 054 MANIFOLD VALVE NORGREN D0043 | 074 SCHRADER VALVE 645-LB GATES |
| 013 REAR AIR FILL VALVE | 033 PRIMARY AIR TANK, JOHNSON WELDING | 053 PARKING BRAKE INTERLOCK, PARKER 7131 | 073 KNEELING MUFFLER EXHAUST |
| 012 ENTRANCE DOOR LOCK CYLINDER Bimba, 7/8" DIA X 5" STROKE | 032 OIL SEPARATOR, HALDEX CONSEP | 052 PROTECTION VALVE, BENDIX PR-4, 70 PSI | 072 GOVERNOR FOR AIR COMPRESSOR WABCO |
| 011 ENTRANCE DOOR CYLINDER Bimba, 2.5" DIA X 5" STROKE | 031 2-WAYS HEATER VALVE SOLENOID ASCO, SYSTEM 2014 | 051 AIR FILTER ASCO NUMATICS 71035 | 071 PURGE TANK HALDEX WITH MANUAL DRAIN VALVE |
| 010 ENTRANCE DOOR LOCK SOLENOID VALVE NORGREN, V60 | 030 WET TANK, JOHNSON WELDING | 050 QUICK CONNECT FITTING AIR HOSE | 070 DRIVER AIR SEAT MANUAL VALVE |
| 009 ENTRANCE DOOR BY-FOLD SOLENOID VALVE NORGREN, V60 | 029 REAR HEIGHT CONTROL VALVE, BARKSDALE 52341 | 049 DOUBLE CHECK VALVE, BENDIX DC-4 | 069 WHEEL CHAIR LIFT DOOR LOCK SOLENOID VALVE NORGREN, V60 |
| 008 AIR MANIFOLD BLOC, PARKER 24M | 028 I VALVE FOR PARKING BRAKE, BENDIX SR-7 | 048 PRESSURE TRANSDUCER, VOLVO | 068 WHEEL CHAIR LIFT DOOR LOCK CYLINDER Bimba, 1.75" DIA X 1" STROKE |
| 007 REGULATOR OUTPUT RETARDER, NORGREN R06 | 027 VALVE FOR SERVICE BRAKE, BENDIX R-14 | 047 STOP LIGHT SWITCH, BENDIX | 067 FRONT BRAKES VALVES, BENDIX RELAY VALVE ATR-6 |
| 006 PRESSURE REDUCTOR VALVE AHI, BENDIX RV-3 | 026 DOOR VALVE AUTO-RESET | 046 INVERSION VALVE, BENDIX TR-3 | 066 BENDIX ATC VALVE |
| 005 TAG UNLOAD VALVE, NORGREN V60 | 025 PARKING BRAKE VALVE BENDIX, PP-1 | 045 KNEELING AIR TANK, JOHNSON WELDING | 065 EMERGENCY PARKING BRAKE OVERRULE VALVE, BENDIX RD-3 |
| 004 PING TANK, JOHNSON WELDING | 024 ABS VALVE MODULATOR BENDIX M40-OR WITH SILENCER | 044 FRONT HEIGHT CONTROL VALVE, BARKSDALE 52341 | 064 QUICK COUPLING PARKER, L2C |
| 003 ALLISON SOLENOID VALVE | 023 ROTATIVE CHAIN SYSTEM DRIVE AXLE SOLENOID | 043 KNEELING SUSPENSION VALVE, NORGREN NUGGET 200 | 063 BRAKE VALVE PEDAL BENDIX, E-10P |
| 002 ALLISON TRANSMISSION RETARDER CYLINDER | 022 SWIVEL CHAIN UNIT WITH ARM ASSEMBLY | 042 KNEELING SUSPENSION VALVE, NORGREN NUGGET 200 | 062 STEERING WHEEL COLUMN, ZF |
| 001 AIR COMPRESSOR WABCO 636 | 021 REAR SUSPENSION VALVE NORGREN, NUGGET 200 | 041 FRONT AIR SPRING, GOODYEAR 1R12 | 061 ADJUSTABLE STEERING WHEEL MANUAL VALVE, MAC 1111A-032 |
| ITEM DESCRIPTION | ITEM DESCRIPTION | ITEM DESCRIPTION | ITEM DESCRIPTION |

VEHICLE DESCRIPTION : -COACH X3 WITH FRONT BEAM AXLE SUSPENSION
 -SUSPENSION FRONT KNEELING SYSTEM
 -TRANSMISSION WORLD WITH "RETARDER"
 -ABS BRAKE SYSTEM WITH "PARKING BRAKES OVERRULE"
 -HALDEX TWIN AIR DRYER WITH HALDEX OIL SEPARATOR
 -TOWING QUICK CONNECT FRONT BUMPER
 -BY-FOLD ENTRANCE DOOR WITH INTERLOCK BRAKE SYSTEM
 -WITH WHEEL CHAIR LIFT DOOR AIR LOCK
 -AIR COMPRESSOR WABCO DIRECT DRIVE ON VOLVO ENGINE
 -UNLOAD TAG SUSPENSION SYSTEM

NOTE 1 : SoXX AND SoXX ARE ELECTRIC CONNECTORS NAME TAG.

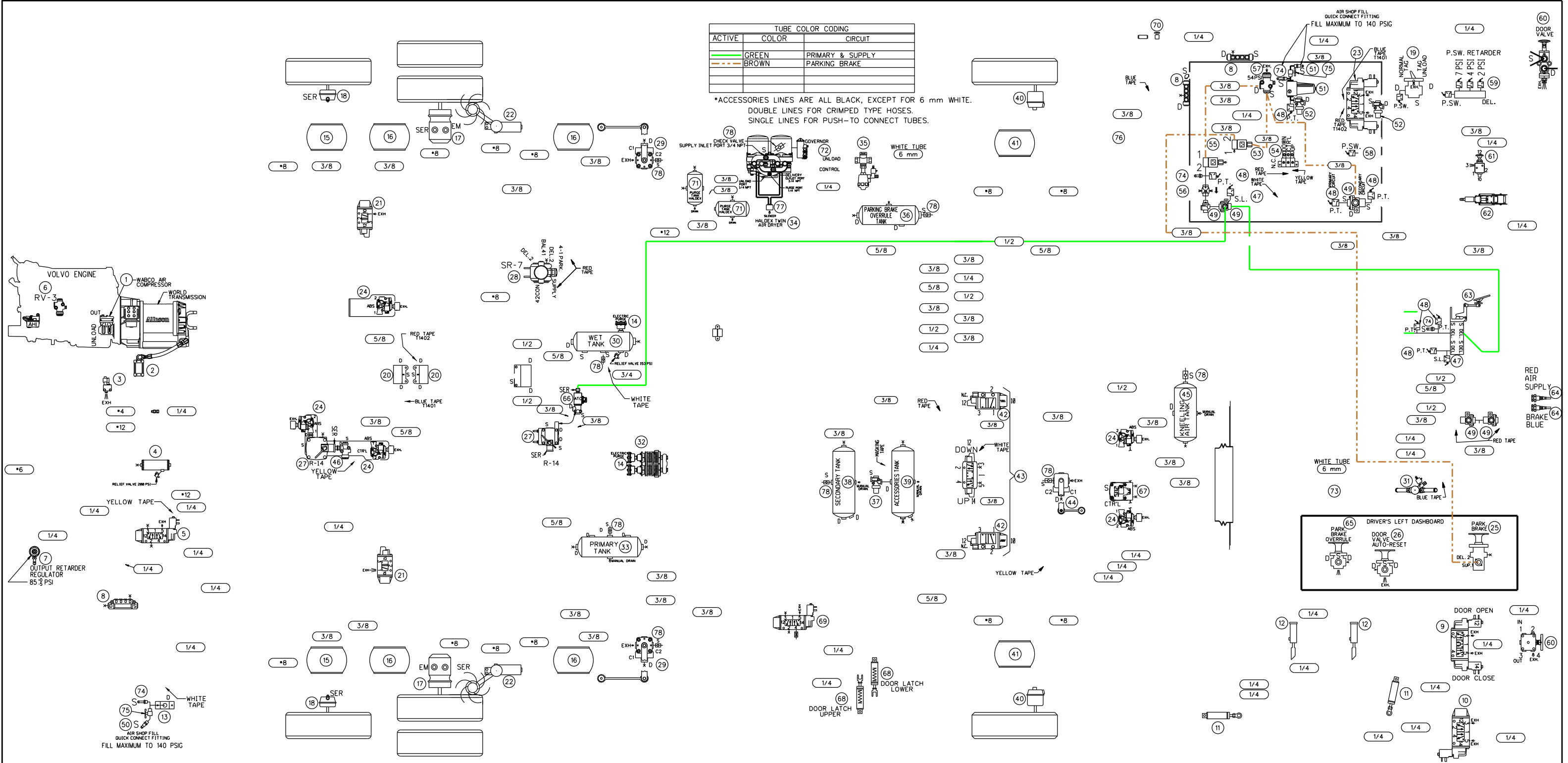
| LEGENDE: | |
|----------------------------|------------------------------|
| "SER": SERVICE | "RES": RESEPARATOR SERVICE |
| "EM": EMERGENCY | "P": PRESSION (ALIMENTATION) |
| "EXH": EXHAUST | "A": ACCESSORE (DEL) |
| "BAL": BALANCE | "S": ALIMENTATION (SUPPLY) |
| "S.L": SUPPLY BRID | "R.C": RALLY CISE |
| "P.T": PRESSURE TANK | "P.S": PRESSURE SWITCH |
| "A": ACCESSORE (DEL) | "B": DRAIN |
| "S": ALIMENTATION (SUPPLY) | "S": SOLENOIDE |
| "S": SPRING | |

PREVOST

PNEUMATIC SCHEMATIC X3 NYCT
 ACCESSORIES ONLY

REV.: A
 DATE: 2020/09/28

PAGE:
 D140445 P3



| ACTIVE | COLOR | CIRCUIT |
|--------|-------|------------------|
| — | GREEN | PRIMARY & SUPPLY |
| — | BROWN | PARKING BRAKE |
| — | WHITE | 6 mm |

*ACCESSORIES LINES ARE ALL BLACK, EXCEPT FOR 6 mm WHITE.
DOUBLE LINES FOR CRIMPED TYPE HOSES.
SINGLE LINES FOR PUSH-TO CONNECT TUBES.

VEHICLE DESCRIPTION :
 -COACH X3 WITH FRONT BEAM AXLE SUSPENSION
 -SUSPENSION FRONT KNEELING SYSTEM
 -TRANSMISSION WORLD WITH "RETARDER"
 -ABS BRAKE SYSTEM WITH "PARKING BRAKES OVERRULE"
 -HALDEX TWIN AIR DRYER WITH HALDEX OIL SEPARATOR
 -TOWING QUICK CONNECT FRONT BUMPER
 -BY-FOLD ENTRANCE DOOR WITH INTERLOCK BRAKE SYSTEM
 -WITH WHEEL CHAIR LIFT DOOR AIR LOCK
 -AIR COMPRESSOR WABCO DIRECT DRIVE ON VOLVO ENGINE
 -UNLOAD TAG SUSPENSION SYSTEM

NOTE 1 : SoXX AND SoXX ARE ELECTRIC CONNECTORS NAME TAG.

| LEGENDE: | RES-1 | RES-2 | RES-3 | RES-4 | RES-5 | RES-6 | RES-7 | RES-8 | RES-9 | RES-10 | RES-11 | RES-12 | RES-13 | RES-14 | RES-15 | RES-16 | RES-17 | RES-18 | RES-19 | RES-20 | RES-21 | RES-22 | RES-23 | RES-24 | RES-25 | RES-26 | RES-27 | RES-28 | RES-29 | RES-30 | RES-31 | RES-32 | RES-33 | RES-34 | RES-35 | RES-36 | RES-37 | RES-38 | RES-39 | RES-40 | RES-41 | RES-42 | RES-43 | RES-44 | RES-45 | RES-46 | RES-47 | RES-48 | RES-49 | RES-50 | RES-51 | RES-52 | RES-53 | RES-54 | RES-55 | RES-56 | RES-57 | RES-58 | RES-59 | RES-60 | RES-61 | RES-62 | RES-63 | RES-64 | RES-65 | RES-66 | RES-67 | RES-68 | RES-69 | RES-70 | RES-71 | RES-72 | RES-73 | RES-74 | RES-75 | RES-76 | RES-77 | RES-78 | RES-79 | RES-80 | RES-81 | RES-82 | RES-83 | RES-84 | RES-85 | RES-86 | RES-87 | RES-88 | RES-89 | RES-90 | RES-91 | RES-92 | RES-93 | RES-94 | RES-95 | RES-96 | RES-97 | RES-98 | RES-99 | RES-100 |
|----------|-------|-------|-------|-------|-------|-------|-------|-------|--------|--------|--------|--------|--------|--------|--------|--------|--------|--------|--------|--------|--------|--------|--------|--------|--------|--------|--------|--------|--------|--------|--------|--------|--------|--------|--------|--------|--------|--------|--------|--------|--------|--------|--------|--------|--------|--------|--------|--------|--------|--------|--------|--------|--------|--------|--------|--------|--------|--------|--------|--------|--------|--------|--------|--------|--------|--------|--------|--------|--------|--------|--------|--------|--------|--------|--------|--------|--------|--------|--------|--------|--------|--------|--------|--------|--------|--------|--------|--------|--------|--------|--------|--------|--------|--------|--------|--------|--------|--------|---------|---------|
| RES-1 | RES-2 | RES-3 | RES-4 | RES-5 | RES-6 | RES-7 | RES-8 | RES-9 | RES-10 | RES-11 | RES-12 | RES-13 | RES-14 | RES-15 | RES-16 | RES-17 | RES-18 | RES-19 | RES-20 | RES-21 | RES-22 | RES-23 | RES-24 | RES-25 | RES-26 | RES-27 | RES-28 | RES-29 | RES-30 | RES-31 | RES-32 | RES-33 | RES-34 | RES-35 | RES-36 | RES-37 | RES-38 | RES-39 | RES-40 | RES-41 | RES-42 | RES-43 | RES-44 | RES-45 | RES-46 | RES-47 | RES-48 | RES-49 | RES-50 | RES-51 | RES-52 | RES-53 | RES-54 | RES-55 | RES-56 | RES-57 | RES-58 | RES-59 | RES-60 | RES-61 | RES-62 | RES-63 | RES-64 | RES-65 | RES-66 | RES-67 | RES-68 | RES-69 | RES-70 | RES-71 | RES-72 | RES-73 | RES-74 | RES-75 | RES-76 | RES-77 | RES-78 | RES-79 | RES-80 | RES-81 | RES-82 | RES-83 | RES-84 | RES-85 | RES-86 | RES-87 | RES-88 | RES-89 | RES-90 | RES-91 | RES-92 | RES-93 | RES-94 | RES-95 | RES-96 | RES-97 | RES-98 | RES-99 | RES-100 | |

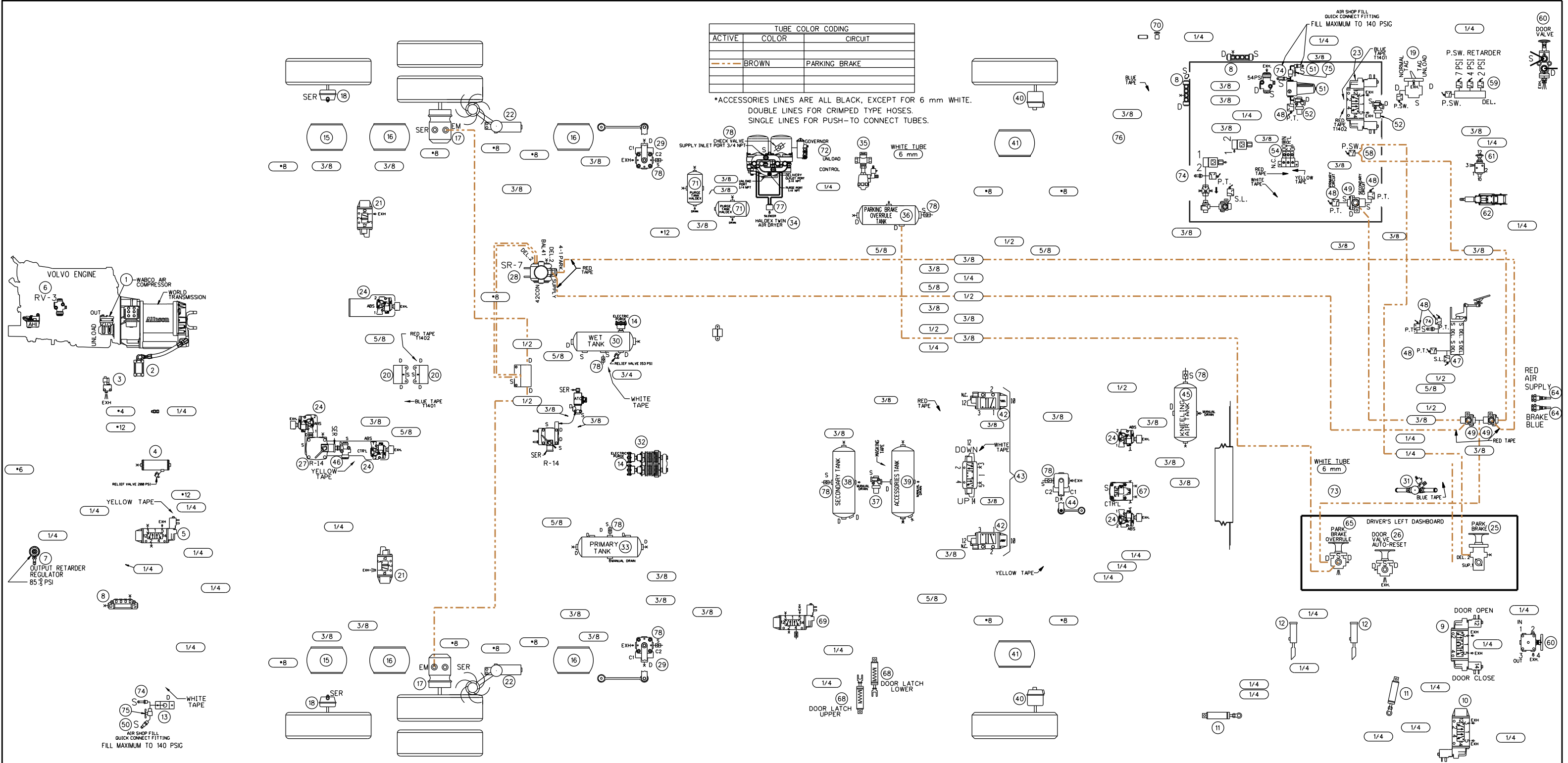
| | | | | | | | |
|------|---|------|---|------|--|------|--|
| 020 | ROTATIVE CHAIN SYSTEM BLOC MANIFOLD | 040 | FRONT BRAKE CHAMBER, KNORR TYPE 24 | 060 | ENTRANCE DOOR MANUAL VALVE, NORNGREN D-PRO V82 | 080 | |
| 019 | LIFT TAG AXLE VALVE BENDIX, TW-1 | 039 | ACCESSORIES AIR TANK, JOHNSON WELDING | 059 | PRESSURE SWITCH N.O. ALLISON | 079 | |
| 018 | TAG AXLE BRAKE CHAMBER KNORR, TYPE 14 | 038 | SECONDARY AIR TANK, JOHNSON WELDING | 058 | PRESSURE SWITCH N.C. KLIXON | 078 | CHECK VALVE |
| 017 | DRIVE AXLE BRAKE CHAMBER, KNORR TYPE 24/24 | 037 | PROTECTION VALVE, BENDIX PR-4, 85 PSI | 057 | PRESSURE REDUCING VALVE, BENDIX RV-3 | 077 | SILENCER HALDEX AIR DRYER |
| 016 | DRIVE AXLE AIR SPRING GOODYEAR, TR11 | 036 | PARKING BRAKE OVERRULE AIR TANK, JOHNSON WELDING | 056 | INLINE QUICK RELEASE VALVE BENDIX, QR-L | 076 | FLOATING TEE FITTING |
| 015 | TAG AXLE AIR SPRING GOODYEAR, TR12 | 035 | 3-WAYS HEATER VALVE SOLENOID BURKERT, SYSTEM 2006 | 055 | SOLENOID ENTRANCE DOOR INTERLOCK PARKER 7131 | 075 | AIR MANUAL VALVE ON-OFF |
| 014 | ELECTRIC PURGE HALDEX OIL SEPARATOR | 034 | HALDEX TWIN AIR DRYER | 054 | MANIFOLD VALVE NORNGREN D0043 | 074 | SCHRADER VALVE 645-LB GATES |
| 013 | REAR AIR FILL VALVE | 033 | PRIMARY AIR TANK, JOHNSON WELDING | 053 | PARKING BRAKE INTERLOCK, PARKER 7131 | 073 | KNEELING MUFFLER EXHAUST |
| 012 | ENTRANCE DOOR LOCK CYLINDER Bimba, 7/8" DIA X 5" STROKE | 032 | OIL SEPARATOR, HALDEX CONSEP | 052 | PROTECTION VALVE, BENDIX PR-4, 70 PSI | 072 | GOVERNOR FOR AIR COMPRESSOR WABCO |
| 011 | ENTRANCE DOOR CYLINDER Bimba, 2.5" DIA X 5" STROKE | 031 | 2-WAYS HEATER VALVE SOLENOID ASCO, SYSTEM 2014 | 051 | AIR FILTER ASCO NUMATICS 71035 | 071 | PURGE TANK HALDEX WITH MANUAL DRAIN VALVE |
| 010 | ENTRANCE DOOR LOCK SOLENOID VALVE NORNGREN, V60 | 030 | WET TANK, JOHNSON WELDING | 050 | QUICK CONNECT FITTING AIR HOSE | 070 | DRIVER AIR SEAT MANUAL VALVE |
| 009 | ENTRANCE DOOR BY-FOLD SOLENOID VALVE NORNGREN, V60 | 029 | REAR HEIGHT CONTROL VALVE, BARKSDALE 52341 | 049 | DOUBLE CHECK VALVE, BENDIX DC-4 | 069 | WHEEL CHAIR LIFT DOOR LOCK SOLENOID VALVE NORNGREN, V60 |
| 008 | AIR MANIFOLD BLOC, PARKER 24M | 028 | VALVE FOR PARKING BRAKE, BENDIX SR-7 | 048 | PRESSURE TRANSDUCER, VOLVO | 068 | WHEEL CHAIR LIFT DOOR LOCK CYLINDER Bimba, 1.75" DIA X 1" STROKE |
| 007 | REGULATOR OUTPUT RETARDER, NORNGREN R06 | 027 | VALVE FOR SERVICE BRAKE, BENDIX R-14 | 047 | STOP LIGHT SWITCH, BENDIX | 067 | FRONT BRAKES VALVES, BENDIX RELAY VALVE ATR-6 |
| 006 | PRESSURE REDUCTOR VALVE AHI, BENDIX RV-3 | 026 | DOOR VALVE AUTO-RESET | 046 | INVERSION VALVE, BENDIX TR-3 | 066 | BENDIX ATC VALVE |
| 005 | TAG UNLOAD VALVE, NORNGREN V60 | 025 | PARKING BRAKE VALVE BENDIX, PP-1 | 045 | KNEELING AIR TANK, JOHNSON WELDING | 065 | EMERGENCY PARKING BRAKE OVERRULE VALVE, BENDIX RD-3 |
| 004 | PING TANK, JOHNSON WELDING | 024 | ABS VALVE MODULATOR BENDIX M40-OR WITH SILENCER | 044 | FRONT HEIGHT CONTROL VALVE, BARKSDALE 52341 | 064 | QUICK COUPLING PARKER, L2C |
| 003 | ALLISON SOLENOID VALVE | 023 | ROTATIVE CHAIN SYSTEM DRIVE AXLE SOLENOID | 043 | KNEELING SUSPENSION VALVE, NORNGREN NUGGET 200 | 063 | BRAKE VALVE PEDAL BENDIX, E-10P |
| 002 | ALLISON TRANSMISSION RETARDER CYLINDER | 022 | SWIVEL CHAIN UNIT WITH ARM ASSEMBLY | 042 | KNEELING SUSPENSION VALVE, NORNGREN NUGGET 200 | 062 | STEERING WHEEL COLUMN, ZF |
| 001 | AIR COMPRESSOR WABCO 636 | 021 | REAR SUSPENSION VALVE NORNGREN, NUGGET 200 | 041 | FRONT AIR SPRING, GOODYEAR 1R12 | 061 | ADJUSTABLE STEERING WHEEL MANUAL VALVE, MAC 1111A-032 |
| ITEM | DESCRIPTION | ITEM | DESCRIPTION | ITEM | DESCRIPTION | ITEM | DESCRIPTION |

PREVOST

PNEUMATIC SCHEMATIC X3 NYCT
ENTRANCE DOOR AND WHEEL CHAIR LIFT INTERLOCK

REV.: A
DATE: 2020/09/28

PAGE:
D140445 P4



| | | | | | | | |
|------|---|------|---|------|---|------|--|
| 020 | ROTATIVE CHAIN SYSTEM BLOC MANIFOLD | 040 | FRONT BRAKE CHAMBER, KNORR TYPE 24 | 060 | ENTRANCE DOOR MANUAL VALVE, NORGREN D-PRO V82 | 080 | |
| 019 | LIFT TAG AXLE VALVE BENDIX, TW-1 | 039 | ACCESSORIES AIR TANK, JOHNSON WELDING | 059 | PRESSURE SWITCH N.O. ALLISON | 079 | |
| 018 | TAG AXLE BRAKE CHAMBER, KNORR, TYPE 14 | 038 | SECONDARY AIR TANK, JOHNSON WELDING | 058 | PRESSURE SWITCH N.C. KLIXON | 078 | CHECK VALVE |
| 017 | DRIVE AXLE BRAKE CHAMBER, KNORR TYPE 24/24 | 037 | PROTECTION VALVE, BENDIX PR-4, 85 PSI | 057 | PRESSURE REDUCING VALVE, BENDIX RV-3 | 077 | SILENCER HALDEX AIR DRYER |
| 016 | DRIVE AXLE AIR SPRING GOODYEAR, TR11 | 036 | PARKING BRAKE OVERRULE AIR TANK, JOHNSON WELDING | 056 | INLINE QUICK RELEASE VALVE BENDIX, QR-L | 076 | FLOATING TEE FITTING |
| 015 | TAG AXLE AIR SPRING GOODYEAR, TR12 | 035 | 3-WAYS HEATER VALVE SOLENOID BURKERT, SYSTEM 2006 | 055 | SOLENOID ENTRANCE DOOR INTERLOCK PARKER 7131 | 075 | AIR MANUAL VALVE ON-OFF |
| 014 | ELECTRIC PURGE HALDEX OIL SEPARATOR | 034 | HALDEX TWIN AIR DRYER | 054 | MANIFOLD VALVE NORGREN D0043 | 074 | SCHRADER VALVE 645-LB GATES |
| 013 | REAR AIR FILL VALVE | 033 | PRIMARY AIR TANK, JOHNSON WELDING | 053 | PARKING BRAKE INTERLOCK, PARKER 7131 | 073 | KNEELING MUFFLER EXHAUST |
| 012 | ENTRANCE DOOR LOCK CYLINDER Bimba, 7/8" DIA X 5" STROKE | 032 | OIL SEPARATOR, HALDEX CONSEP | 052 | PROTECTION VALVE, BENDIX PR-4, 70 PSI | 072 | GOVERNOR FOR AIR COMPRESSOR WABCO |
| 011 | ENTRANCE DOOR CYLINDER Bimba, 2.5" DIA X 5" STROKE | 031 | 2-WAYS HEATER VALVE SOLENOID ASCO, SYSTEM 2014 | 051 | AIR FILTER ASCO NUMATICS 71035 | 071 | PURGE TANK HALDEX WITH MANUAL DRAIN VALVE |
| 010 | ENTRANCE DOOR LOCK SOLENOID VALVE NORGREN, V60 | 030 | WET TANK, JOHNSON WELDING | 050 | QUICK CONNECT FITTING AIR HOSE | 070 | DRIVER AIR SEAT MANUAL VALVE |
| 009 | ENTRANCE DOOR BY-FOLD SOLENOID VALVE NORGREN, V60 | 029 | REAR HEIGHT CONTROL VALVE, BARKSDALE 52341 | 049 | DOUBLE CHECK VALVE, BENDIX DC-4 | 069 | WHEEL CHAIR LIFT DOOR LOCK SOLENOID VALVE NORGREN, V60 |
| 008 | AIR MANIFOLD BLOC, PARKER 24M | 028 | I VALVE FOR PARKING BRAKE, BENDIX SR-7 | 048 | PRESSURE TRANSDUCER, VOLVO | 068 | WHEEL CHAIR LIFT DOOR LOCK CYLINDER Bimba, 1.75" DIA X 1" STROKE |
| 007 | REGULATOR OUTPUT RETARDER, NORGREN R06 | 027 | VALVE FOR SERVICE BRAKE, BENDIX R-14 | 047 | STOP LIGHT SWITCH, BENDIX | 067 | FRONT BRAKES VALVES, BENDIX RELAY VALVE ATR-6 |
| 006 | PRESSURE REDUCTOR VALVE AHI, BENDIX RV-3 | 026 | DOOR VALVE AUTO-RESET | 046 | INVERSION VALVE, BENDIX TR-3 | 066 | BENDIX ATC VALVE |
| 005 | TAG UNLOAD VALVE, NORGREN V60 | 025 | PARKING BRAKE VALVE BENDIX, PP-1 | 045 | KNEELING AIR TANK, JOHNSON WELDING | 065 | EMERGENCY PARKING BRAKE OVERRULE VALVE, BENDIX RD-3 |
| 004 | PING TANK, JOHNSON WELDING | 024 | ABS VALVE MODULATOR BENDIX M40-OR WITH SILENCER | 044 | FRONT HEIGHT CONTROL VALVE, BARKSDALE 52341 | 064 | QUICK COUPLING PARKER, L2C |
| 003 | ALLISON SOLENOID VALVE | 023 | ROTATIVE CHAIN SYSTEM DRIVE AXLE SOLENOID | 043 | KNEELING SUSPENSION VALVE, NORGREN NUGGET 200 | 063 | BRAKE VALVE PEDAL BENDIX, E-10P |
| 002 | ALLISON TRANSMISSION RETARDER CYLINDER | 022 | SWIVEL CHAIN UNIT WITH ARM ASSEMBLY | 042 | KNEELING SUSPENSION VALVE, NORGREN NUGGET 200 | 062 | STEERING WHEEL COLUMN, ZF |
| 001 | AIR COMPRESSOR WABCO 636 | 021 | REAR SUSPENSION VALVE NORGREN, NUGGET 200 | 041 | FRONT AIR SPRING, GOODYEAR 1R12 | 061 | ADJUSTABLE STEERING WHEEL MANUAL VALVE, MAC 1111A-032 |
| ITEM | DESCRIPTION | ITEM | DESCRIPTION | ITEM | DESCRIPTION | ITEM | DESCRIPTION |

VEHICLE DESCRIPTION : -COACH X3 WITH FRONT BEAM AXLE SUSPENSION
-SUSPENSION FRONT KNEELING SYSTEM
-TRANSMISSION WORLD WITH "RETARDER"
-ABS BRAKE SYSTEM WITH "PARKING BRAKES OVERRULE"
-HALDEX TWIN AIR DRYER WITH HALDEX OIL SEPARATOR
-TOWING QUICK CONNECT FRONT BUMPER
-BY-FOLD ENTRANCE DOOR WITH INTERLOCK BRAKE SYSTEM
-WITH WHEEL CHAIR LIFT DOOR AIR LOCK
-AIR COMPRESSOR WABCO DIRECT DRIVE ON VOLVO ENGINE
-UNLOAD TAG SUSPENSION SYSTEM

NOTE 1 : SoXX AND SoXX ARE ELECTRIC CONNECTORS NAME TAG.

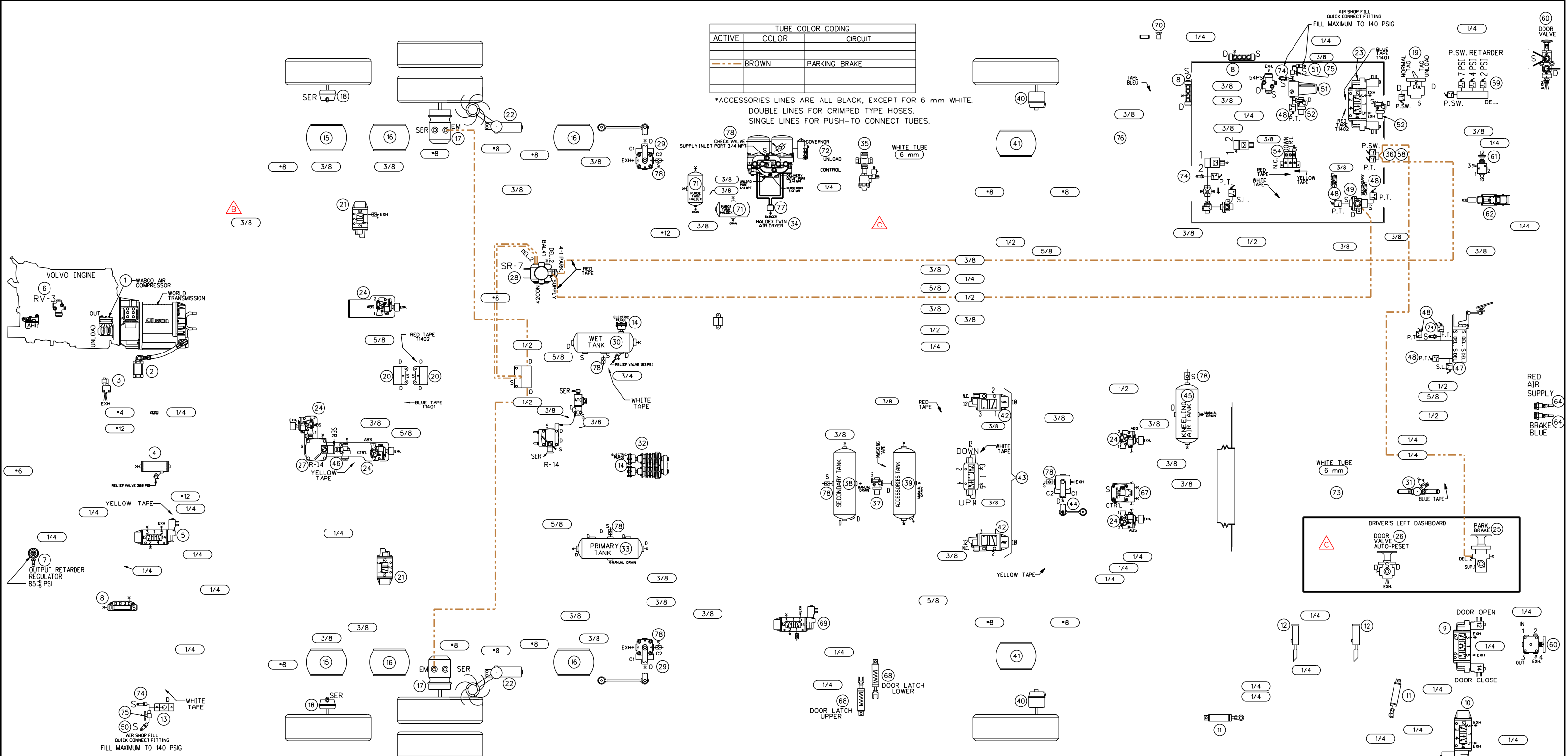
| LEGENDE: | | | |
|-----------------|------------------------------|---------------------------|-------------------------|
| "SER": SERVICE | "RES": RESERVOIR SERVICE | "S.L.": STOP LIGHT SWITCH | "N.C.": NORMALLY CLOSED |
| "EM": EMERGENCY | "P": PRESSURE (ALIMENTATION) | "P.T.": PRESSURE TANK | "P.S.": PRESSURE SWITCH |
| "EXH": EXHAUST | "A": ACCESSOIRE (OEL) | "B": DRAIN | "S": SOLENOID |
| "BAL": BALANCE | "S": ALIMENTATION (SUPPLY) | "S": SOLENOID | "SP": SPRING |

PREVOST

PNEUMATIC SCHEMATIC X3 NYCT
EMERGENCY AND PARKING BRAKE

REV.: A
DATE: 2020/09/28

PAGE:
D140445 P5

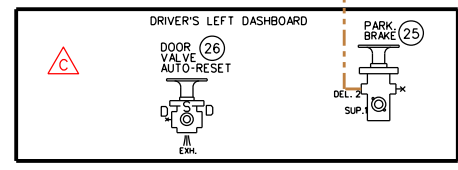


| TUBE COLOR CODING | | |
|-------------------|-------|---------------|
| ACTIVE | COLOR | CIRCUIT |
| --- | BROWN | PARKING BRAKE |

*ACCESSORIES LINES ARE ALL BLACK, EXCEPT FOR 6 mm WHITE.
 DOUBLE LINES FOR CRIMPED TYPE HOSES.
 SINGLE LINES FOR PUSH-TO CONNECT TUBES.

WHITE TUBE
 (6 mm)

AIR SHOP FILL
 QUICK CONNECT FITTING
 FILL MAXIMUM TO 140 PSIG



| | | | |
|---|---|--|--|
| 020 ROTATIVE CHAIN SYSTEM BLOC MANIFOLD | 040 FRONT BRAKE CHAMBER, KNORR TYPE 24 | 060 ENTRANCE DOOR MANUAL VALVE, NORRGREN D-PRO V82 | 080 |
| 019 LIFT TAG AXLE VALVE, BENDIX, TW-1 | 039 ACCESSORIES AIR TANK, JOHNSON WELDING | 059 PRESSURE SWITCH N.O. ALLISON | 079 |
| 018 TAG AXLE BRAKE CHAMBER, KNORR, TYPE 14 | 038 SECONDARY AIR TANK, JOHNSON WELDING | 058 PRESSURE SWITCH N.C. KLIXON | 078 CHECK VALVE |
| 017 DRIVE AXLE BRAKE CHAMBER, KNORR TYPE 24/24 | 037 PROTECTION VALVE, BENDIX PR-4, 85 PSI | 057 PRESSURE REDUCING VALVE, BENDIX RV-3 | 077 SILENCER HALDEX AIR DRYER |
| 016 DRIVE AXLE AIR SPRING, GOODYEAR, TR11 | 036 PRESSURE TRANSDUCER (0-12 BAR) | 056 INLINE QUICK RELEASE VALVE, BENDIX, OR-L | 076 FLOATING TEE FITTING |
| 015 TAG AXLE AIR SPRING, GOODYEAR, TR12 | 035 3-WAYS HEATER VALVE SOLENOID BURKERT, SYSTEM 2006 | 055 SOLENOID ENTRANCE DOOR INTERLOCK PARKER 7131 | 075 AIR MANUAL VALVE ON-OFF |
| 014 ELECTRIC PURGE HALDEX OIL SEPARATOR | 034 HALDEX TWIN AIR DRYER | 054 MANIFOLD VALVE NORRGREN D0043 | 074 SCHRADER VALVE 645-LB GATES |
| 013 REAR AIR FILL VALVE | 033 PRIMARY AIR TANK, JOHNSON WELDING | 053 PARKING BRAKE INTERLOCK, PARKER 7131 | 073 KNEELING MUFFLER EXHAUST |
| 012 ENTRANCE DOOR LOCK CYLINDER Bimba, 7/8" DIA X 5" STROKE | 032 OIL SEPARATOR, HALDEX CONSEP | 052 PROTECTION VALVE, BENDIX PR-4, 70 PSI | 072 GOVERNOR FOR AIR COMPRESSOR WABCO |
| 011 ENTRANCE DOOR CYLINDER Bimba, 2.5" DIA X 5" STROKE | 031 2-WAYS HEATER VALVE SOLENOID ASCO, SYSTEM 2014 | 051 AIR FILTER ASCO NUMATICS 71035 | 071 PURGE TANK HALDEX WITH MANUAL DRAIN VALVE |
| 010 ENTRANCE DOOR LOCK SOLENOID VALVE, NORRGREN, V60 | 030 WET TANK, JOHNSON WELDING | 050 QUICK CONNECT FITTING AIR HOSE | 070 DRIVER AIR SEAT MANUAL VALVE |
| 009 ENTRANCE DOOR BY-FOLD SOLENOID VALVE, NORRGREN, V60 | 029 REAR HEIGHT CONTROL VALVE, BARKSDALE 52341 | 049 DOUBLE CHECK VALVE, BENDIX DC-4 | 069 WHEEL CHAIR LIFT DOOR LOCK SOLENOID VALVE, NORRGREN, V60 |
| 008 AIR MANIFOLD BLOC, PARKER 24M | 028 VALVE FOR PARKING BRAKE, BENDIX SR-7 | 048 PRESSURE TRANSDUCER, VOLVO | 068 WHEEL CHAIR LIFT DOOR LOCK CYLINDER Bimba, 1.75" DIA X 1" STROKE |
| 007 REGULATOR OUTPUT RETARDER, NORRGREN R06 | 027 VALVE FOR SERVICE BRAKE, BENDIX R-14 | 047 STOP LIGHT SWITCH, BENDIX | 067 FRONT BRAKES VALVES, BENDIX RELAY VALVE ATR-6 |
| 006 PRESSURE REDUCTOR VALVE AHI, BENDIX RV-3 | 026 DOOR VALVE AUTO-RESET | 046 INVERSION VALVE, BENDIX TR-3 | 066 BENDIX ATC VALVE |
| 005 TAG UNLOAD VALVE, NORRGREN V60 | 025 PARKING BRAKE VALVE, BENDIX, PP-1 | 045 KNEELING AIR TANK, JOHNSON WELDING | 065 |
| 004 PING TANK, JOHNSON WELDING | 024 ABS VALVE MODULATOR BENDIX M40-OR WITH SILENCER | 044 FRONT HEIGHT CONTROL VALVE, BARKSDALE 52341 | 064 QUICK COUPLING PARKER, L2C |
| 003 ALLISON SOLENOID VALVE | 023 ROTATIVE CHAIN SYSTEM DRIVE AXLE SOLENOID | 043 KNEELING SUSPENSION VALVE, NORRGREN NUGGET 200 | 063 BRAKE VALVE PEDAL BENDIX, E-10P |
| 002 ALLISON TRANSMISSION RETARDER CYLINDER | 022 SWIVEL CHAIN UNIT WITH ARM ASSEMBLY | 042 KNEELING SUSPENSION VALVE, NORRGREN NUGGET 200 | 062 STEERING WHEEL COLUMN, ZF |
| 001 AIR COMPRESSOR WABCO 636 | 021 REAR SUSPENSION VALVE, NORRGREN, NUGGET 200 | 041 FRONT AIR SPRING, GOODYEAR 1R12 | 061 ADJUSTABLE STEERING WHEEL MANUAL VALVE, MAC 1111A-032 |

NOTE 1 : Soxx AND Sexx ARE ELECTRIC CONNECTORS NAME TAG.

| LEGENDE : | | | |
|------------------|------------------------------|---------------------------|----------------------------|
| "SER" : SERVICE | "RES-1" : RESERVOIR SERVICE | "N.C." : NORMALLY CLOSED | "S.L." : STOP LIGHT SWITCH |
| "EM" : EMERGENCY | "P" : PRESSURE ALIMENTATION | "P.C." : PRESSURE CONTROL | "N.O." : NORMALLY OPEN |
| "EXH" : EXHAUST | "A" : ACCESSOIRE DELI | "P.S." : PRESSURE SWITCH | "S" : SOLENOIDE |
| "BAL" : BALANCE | "D" : DELIVERY (CL. OU DEL.) | "S" : SPRING | |
| | "I" : ALIMENTATION (SUPPLY) | | |

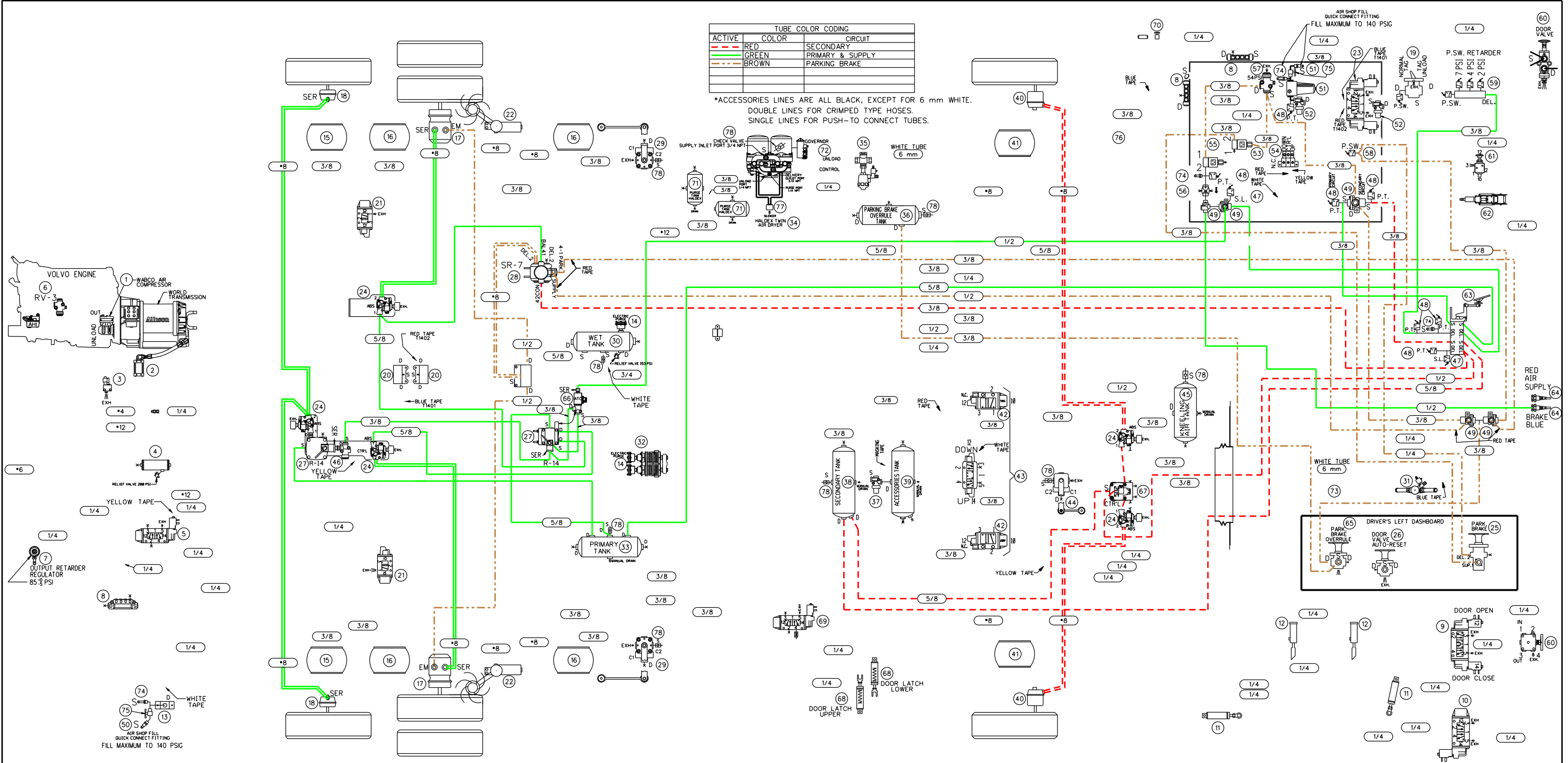
VEHICLE DESCRIPTION : -COACH X3 WITH FRONT BEAM AXLE SUSPENSION
 -SUSPENSION FRONT KNEELING SYSTEM
 -TRANSMISSION WORLD WITH "RETARDER"
 -ABS 8 BRAKE SYSTEM WITH "PARKING BRAKES OVERRULE"
 -HALDEX TWIN AIR DRYER WITH HALDEX OIL SEPARATOR
 -TOWING QUICK CONNECT FRONT BUMPER
 -BY-FOLD ENTRANCE DOOR WITH INTERLOCK BRAKE SYSTEM
 -WITH WHEEL CHAIR LIFT DOOR AIR LOCK
 -AIR COMPRESSOR WABCO DIRECT DRIVE ON VOLVO ENGINE
 -UNLOAD TAG SUSPENSION SYSTEM



DESCRIPTION: PNEUMATIC SCHEMATIC X3 NYCT EMERGENCY AND PARKING BRAKE

REV.: B
 DATE: 2020/09/28

PAGE: D140445 P5



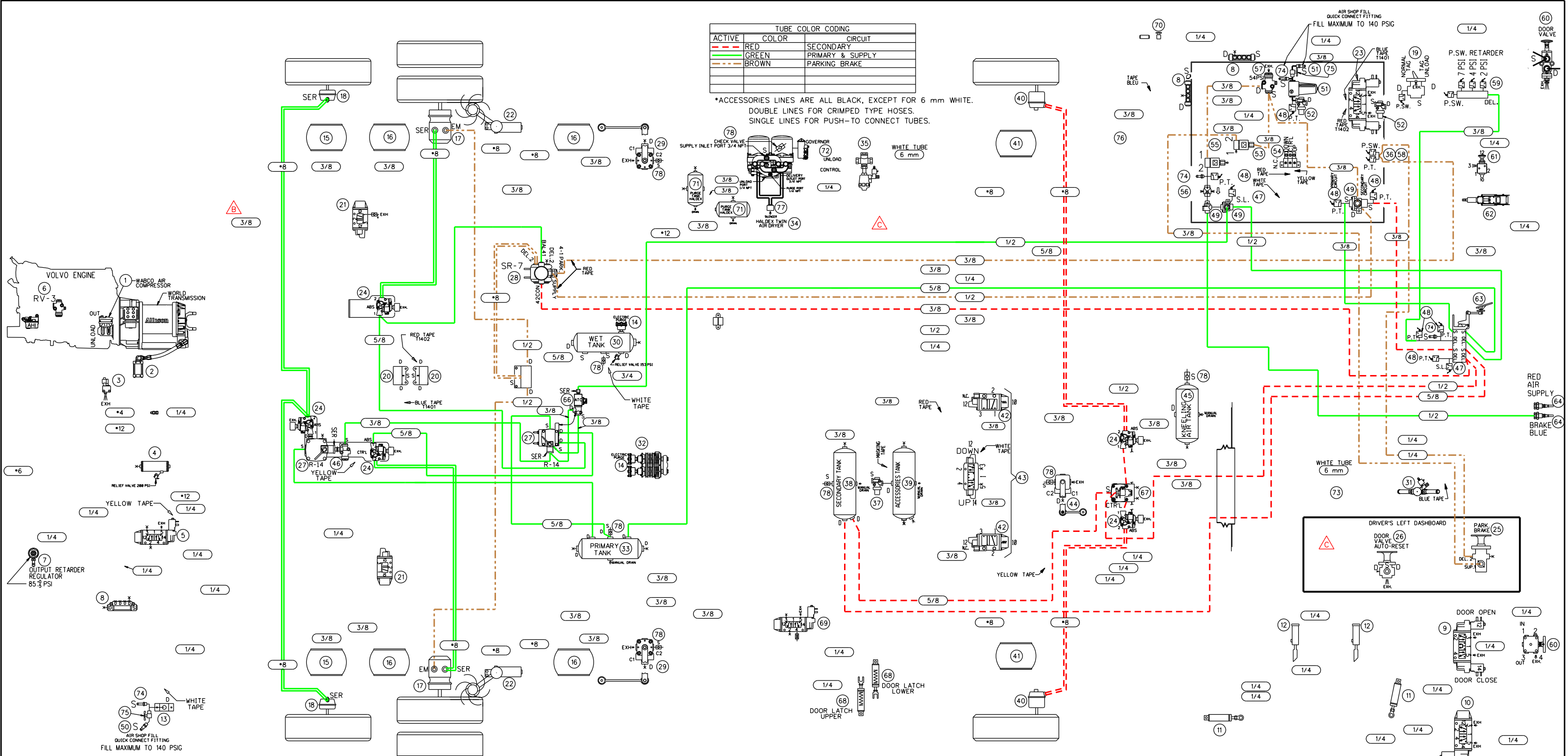
| | | | | | | | |
|------|---|------|---|------|---|------|--|
| 020 | ROTATIVE CHAIN SYSTEM BLOC MANIFOLD | 040 | FRONT BRAKE CHAMBER, KNORR TYPE 24 | 060 | ENTRANCE DOOR MANUAL VALVE, NORGREN D-PRO V82 | 080 | |
| 019 | LIFT TAG AXLE VALVE BENDIX, TW-1 | 039 | ACCESSORIES AIR TANK, JOHNSON WELDING | 059 | PRESSURE SWITCH N.O. ALLISON | 079 | |
| 018 | TAG AXLE BRAKE CHAMBER KNORR, TYPE 14 | 038 | SECONDARY AIR TANK, JOHNSON WELDING | 058 | PRESSURE SWITCH N.C. KLIXON | 078 | CHECK VALVE |
| 017 | DRIVE AXLE BRAKE CHAMBER, KNORR TYPE 24/24 | 037 | PROTECTION VALVE, BENDIX PR-4, 85 PSI | 057 | PRESSURE REDUCING VALVE, BENDIX RV-3 | 077 | SILENCER HALDEX AIR DRYER |
| 016 | DRIVE AXLE AIR SPRING GOODYEAR, TR11 | 036 | PARKING BRAKE OVERRULE AIR TANK, JOHNSON WELDING | 056 | INLINE QUICK RELEASE VALVE BENDIX, QR-L | 076 | FLOATING TEE FITTING |
| 015 | TAG AXLE AIR SPRING GOODYEAR, TR12 | 035 | 3-WAYS HEATER VALVE SOLENOID BURKERT, SYSTEM 2006 | 055 | SOLENOID ENTRANCE DOOR INTERLOCK PARKER 7131 | 075 | AIR MANUAL VALVE ON-OFF |
| 014 | ELECTRIC PURGE HALDEX OIL SEPARATOR | 034 | HALDEX TWIN AIR DRYER | 054 | MANIFOLD VALVE NORGREN D0043 | 074 | SCHRADER VALVE 645-LB GATES |
| 013 | REAR AIR FILL VALVE | 033 | PRIMARY AIR TANK, JOHNSON WELDING | 053 | PARKING BRAKE INTERLOCK, PARKER 7131 | 073 | KNEELING MUFFLER EXHAUST |
| 012 | ENTRANCE DOOR LOCK CYLINDER Bimba, 7/8" DIA X 5" STROKE | 032 | OIL SEPARATOR, HALDEX CONSEP | 052 | PROTECTION VALVE, BENDIX PR-4, 70 PSI | 072 | GOVERNOR FOR AIR COMPRESSOR WABCO |
| 011 | ENTRANCE DOOR CYLINDER Bimba, 2.5" DIA X 5" STROKE | 031 | 2-WAYS HEATER VALVE SOLENOID ASCO, SYSTEM 2014 | 051 | AIR FILTER ASCO NUMATICS 71035 | 071 | PURGE TANK HALDEX WITH MANUAL DRAIN VALVE |
| 010 | ENTRANCE DOOR LOCK SOLENOID VALVE NORGREN, V60 | 030 | WET TANK, JOHNSON WELDING | 050 | QUICK CONNECT FITTING AIR HOSE | 070 | DRIVER AIR SEAT MANUAL VALVE |
| 009 | ENTRANCE DOOR BY-FOLD SOLENOID VALVE NORGREN, V60 | 029 | REAR HEIGHT CONTROL VALVE, BARKSDALE 52341 | 049 | DOUBLE CHECK VALVE, BENDIX DC-4 | 069 | WHEEL CHAIR LIFT DOOR LOCK SOLENOID VALVE NORGREN, V60 |
| 008 | AIR MANIFOLD BLOC, PARKER 24M | 028 | VALVE FOR PARKING BRAKE, BENDIX SR-7 | 048 | PRESSURE TRANSDUCER, VOLVO | 068 | WHEEL CHAIR LIFT DOOR LOCK CYLINDER Bimba, 1.75" DIA X 1" STROKE |
| 007 | REGULATOR OUTPUT RETARDER, NORGREN RO6 | 027 | VALVE FOR SERVICE BRAKE, BENDIX R-14 | 047 | STOP LIGHT SWITCH, BENDIX | 067 | FRONT BRAKES VALVES, BENDIX RELAY VALVE ATR-6 |
| 006 | PRESSURE REDUCTOR VALVE AHI, BENDIX RV-3 | 026 | DOOR VALVE AUTO-RESET | 046 | INVERSION VALVE, BENDIX TR-3 | 066 | BENDIX ATC VALVE |
| 005 | TAG UNLOAD VALVE, NORGREN V60 | 025 | PARKING BRAKE VALVE BENDIX, PP-1 | 045 | KNEELING AIR TANK, JOHNSON WELDING | 065 | EMERGENCY PARKING BRAKE OVERRULE VALVE, BENDIX RD-3 |
| 004 | PING TANK, JOHNSON WELDING | 024 | ABS VALVE MODULATOR BENDIX M40-OR WITH SILENCER | 044 | FRONT HEIGHT CONTROL VALVE, BARKSDALE 52341 | 064 | QUICK COUPLING PARKER, L2C |
| 003 | ALLISON SOLENOID VALVE | 023 | ROTATIVE CHAIN SYSTEM DRIVE AXLE SOLENOID | 043 | KNEELING SUSPENSION VALVE, NORGREN NUGGET 200 | 063 | BRAKE VALVE PEDAL BENDIX, E-10P |
| 002 | ALLISON TRANSMISSION RETARDER CYLINDER | 022 | SWIVEL CHAIN UNIT WITH ARM ASSEMBLY | 042 | KNEELING SUSPENSION VALVE, NORGREN NUGGET 200 | 062 | STEERING WHEEL COLUMN, ZF |
| 001 | AIR COMPRESSOR WABCO 636 | 021 | REAR SUSPENSION VALVE NORGREN, NUGGET 200 | 041 | FRONT AIR SPRING, GOODYEAR 1R12 | 061 | ADJUSTABLE STEERING WHEEL MANUAL VALVE, MAC 1111A-032 |
| ITEM | DESCRIPTION | ITEM | DESCRIPTION | ITEM | DESCRIPTION | ITEM | DESCRIPTION |

PREVOST

PNEUMATIC SCHEMATIC X3 NYCT
COMPLETE AIR BRAKE SYSTEM

REV.: A
DATE: 2020/09/28

PAGE:
D140445 P6



| ACTIVE | COLOR | CIRCUIT |
|--------|-------|------------------|
| --- | RED | SECONDARY |
| --- | GREEN | PRIMARY & SUPPLY |
| --- | BROWN | PARKING BRAKE |

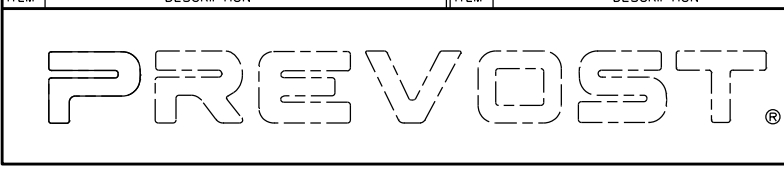
*ACCESSORIES LINES ARE ALL BLACK, EXCEPT FOR 6 mm WHITE.
 DOUBLE LINES FOR CRIMPED TYPE HOSES.
 SINGLE LINES FOR PUSH-TO CONNECT TUBES.

| | | | |
|---|---|--|--|
| 020 ROTATIVE CHAIN SYSTEM BLOC MANIFOLD | 040 FRONT BRAKE CHAMBER, KNORR TYPE 24 | 060 ENTRANCE DOOR MANUAL VALVE, NORRGREN D-PRO V82 | 080 |
| 019 LIFT TAG AXLE VALVE BENDIX, TW-1 | 039 ACCESSORIES AIR TANK, JOHNSON WELDING | 059 PRESSURE SWITCH N.O. ALLISON | 079 |
| 018 TAG AXLE BRAKE CHAMBER KNORR, TYPE 14 | 038 SECONDARY AIR TANK, JOHNSON WELDING | 058 PRESSURE SWITCH N.C. KLIXON | 078 CHECK VALVE |
| 017 DRIVE AXLE BRAKE CHAMBER, KNORR TYPE 24/24 | 037 PROTECTION VALVE, BENDIX PR-4, 85 PSI | 057 PRESSURE REDUCING VALVE, BENDIX RV-3 | 077 SILENCER HALDEX AIR DRYER |
| 016 DRIVE AXLE AIR SPRING GOODYEAR, TR11 | 036 PRESSURE TRANSDUCER (0-12 BAR) | 056 INLINE QUICK RELEASE VALVE BENDIX, OR-L | 076 FLOATING TEE FITTING |
| 015 TAG AXLE AIR SPRING GOODYEAR, TR12 | 035 3-WAYS HEATER VALVE SOLENOID BURKERT, SYSTEM 2006 | 055 SOLENOID ENTRANCE DOOR INTERLOCK PARKER 7131 | 075 AIR MANUAL VALVE ON-OFF |
| 014 ELECTRIC PURGE HALDEX OIL SEPARATOR | 034 HALDEX TWIN AIR DRYER | 054 MANIFOLD VALVE NORRGREN D0043 | 074 SCHRADER VALVE 645-LB GATES |
| 013 REAR AIR FILL VALVE | 033 PRIMARY AIR TANK, JOHNSON WELDING | 053 PARKING BRAKE INTERLOCK, PARKER 7131 | 073 KNEELING MUFFLER EXHAUST |
| 012 ENTRANCE DOOR LOCK CYLINDER Bimba, 7/8" DIA X 5" STROKE | 032 OIL SEPARATOR, HALDEX CONSEP | 052 PROTECTION VALVE, BENDIX PR-4, 70 PSI | 072 GOVERNOR FOR AIR COMPRESSOR WABCO |
| 011 ENTRANCE DOOR CYLINDER Bimba, 2.5" DIA X 5" STROKE | 031 2-WAYS HEATER VALVE SOLENOID ASCO, SYSTEM 2014 | 051 AIR FILTER ASCO NUMATICS 71035 | 071 PURGE TANK HALDEX WITH MANUAL DRAIN VALVE |
| 010 ENTRANCE DOOR LOCK SOLENOID VALVE, NORRGREN V60 | 030 WET TANK, JOHNSON WELDING | 050 QUICK CONNECT FITTING AIR HOSE | 070 DRIVER AIR SEAT MANUAL VALVE |
| 009 ENTRANCE DOOR BY-FOLD SOLENOID VALVE, NORRGREN V60 | 029 REAR HEIGHT CONTROL VALVE, BARKSDALE 52341 | 049 DOUBLE CHECK VALVE, BENDIX DC-4 | 069 WHEEL CHAIR LIFT DOOR LOCK SOLENOID VALVE, NORRGREN V60 |
| 008 AIR MANIFOLD BLOC, PARKER 24M | 028 VALVE FOR PARKING BRAKE, BENDIX SR-7 | 048 PRESSURE TRANSDUCER, VOLVO | 068 WHEEL CHAIR LIFT DOOR LOCK CYLINDER Bimba, 1.75" DIA X 1" STROKE |
| 007 REGULATOR OUTPUT RETARDER, NORRGREN R06 | 027 VALVE FOR SERVICE BRAKE, BENDIX R-14 | 047 STOP LIGHT SWITCH, BENDIX | 067 FRONT BRAKES VALVES, BENDIX RELAY VALVE ATR-6 |
| 006 PRESSURE REDUCTOR VALVE AHI, BENDIX RV-3 | 026 DOOR VALVE AUTO-RESET | 046 INVERSION VALVE, BENDIX TR-3 | 066 BENDIX ATC VALVE |
| 005 TAG UNLOAD VALVE, NORRGREN V60 | 025 PARKING BRAKE VALVE BENDIX, PP-1 | 045 KNEELING AIR TANK, JOHNSON WELDING | 065 |
| 004 PING TANK, JOHNSON WELDING | 024 ABS VALVE MODULATOR BENDIX M40-OR WITH SILENCER | 044 FRONT HEIGHT CONTROL VALVE, BARKSDALE 52341 | 064 QUICK COUPLING PARKER, L2C |
| 003 ALLISON SOLENOID VALVE | 023 ROTATIVE CHAIN SYSTEM DRIVE AXLE SOLENOID | 043 KNEELING SUSPENSION VALVE, NORRGREN NUGGET 200 | 063 BRAKE VALVE PEDAL BENDIX, E-10P |
| 002 ALLISON TRANSMISSION RETARDER CYLINDER | 022 SWIVEL CHAIN UNIT WITH ARM ASSEMBLY | 042 KNEELING SUSPENSION VALVE, NORRGREN NUGGET 200 | 062 STEERING WHEEL COLUMN, ZF |
| 001 AIR COMPRESSOR WABCO 636 | 021 REAR SUSPENSION VALVE NORRGREN, NUGGET 200 | 041 FRONT AIR SPRING, GOODYEAR 1R12 | 061 ADJUSTABLE STEERING WHEEL MANUAL VALVE, MAC 1111A-032 |

VEHICLE DESCRIPTION : -COACH X3 WITH FRONT BEAM AXLE SUSPENSION
 -SUSPENSION FRONT KNEELING SYSTEM
 -TRANSMISSION WORLD WITH "RETARDER"
 -ABS & BRAKE SYSTEM WITH "PARKING BRAKES OVERRULE"
 -HALDEX TWIN AIR DRYER WITH HALDEX OIL SEPARATOR
 -TOWING QUICK CONNECT FRONT BUMPER
 -BY-FOLD ENTRANCE DOOR WITH INTERLOCK BRAKE SYSTEM
 -WITH WHEEL CHAIR LIFT DOOR AIR LOCK
 -AIR COMPRESSOR WABCO DIRECT DRIVE ON VOLVO ENGINE
 -UNLOAD TAG SUSPENSION SYSTEM

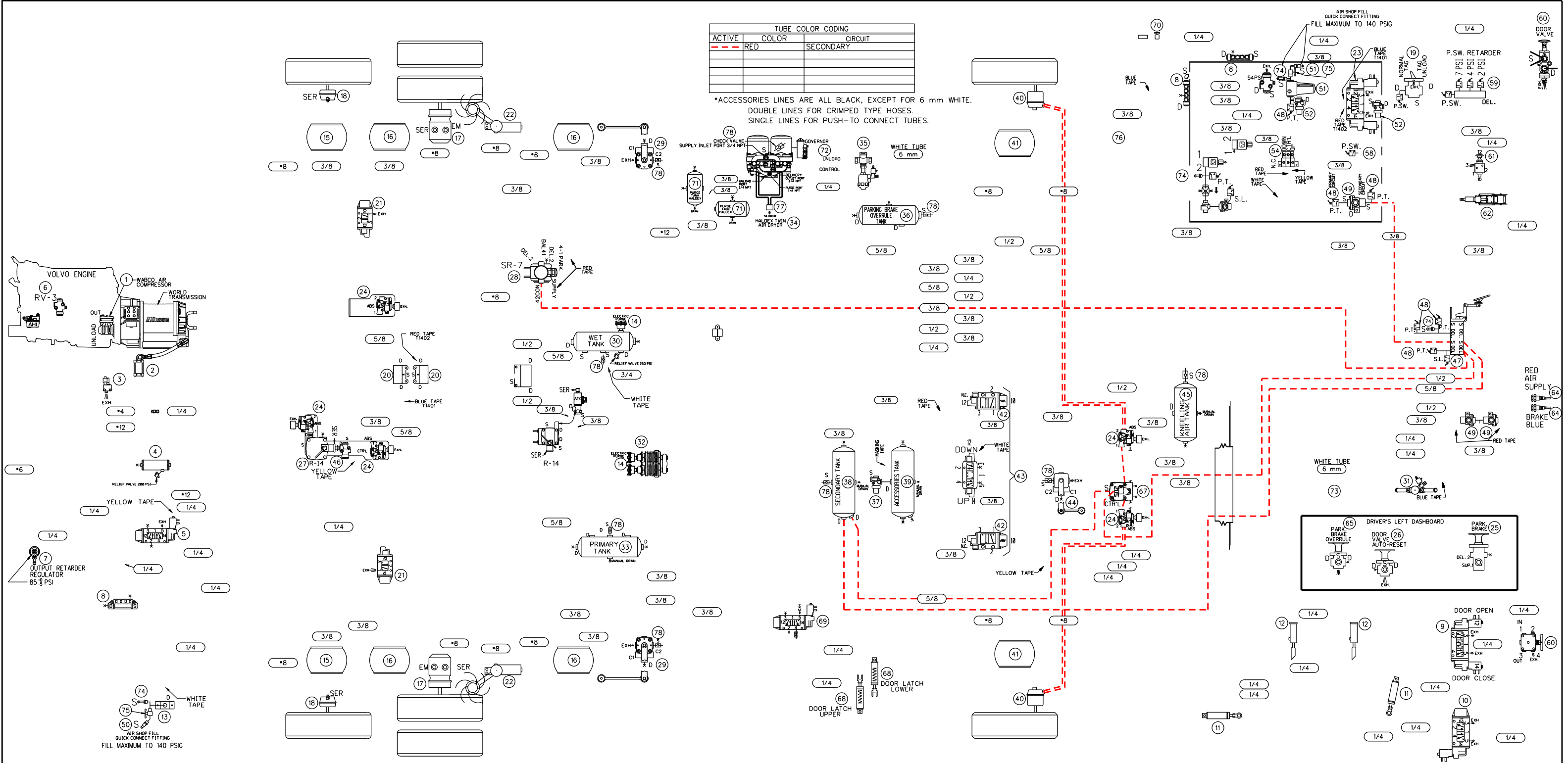
NOTE 1 : SoXX AND SeXX ARE ELECTRIC CONNECTORS NAME TAG.

LEGENDE :
 "SER" : SERVICE
 "EM" : EMERGENCY
 "EXH" : EXHAUST
 "BAL" : BALANCE
 "RES-1" : RESERVOIR SERVICE
 "P" : PRESSION (ALIMENTATION)
 "A" : ACCESSOIRE (DEL)
 "D" : DELIVERY (C1 OU DEL.)
 "AL" : ALIMENTATION (SUPPLY)
 "S.L." : SUP LIGHT SWICH
 "N.C." : NORME CLOSE
 "P.S." : PRESSURE SWICH
 "S" : SWICH
 "S.O." : SOLENOIDE
 "SPR" : SPRING



DESCRIPTION: PNEUMATIC SCHEMATIC X3 NYCT COMPLETE AIR BRAKE SYSTEM

| | | | |
|-------|------------|-------|------------|
| REV.: | B | PAGE: | |
| DATE: | 2020/09/28 | | D140445 P6 |

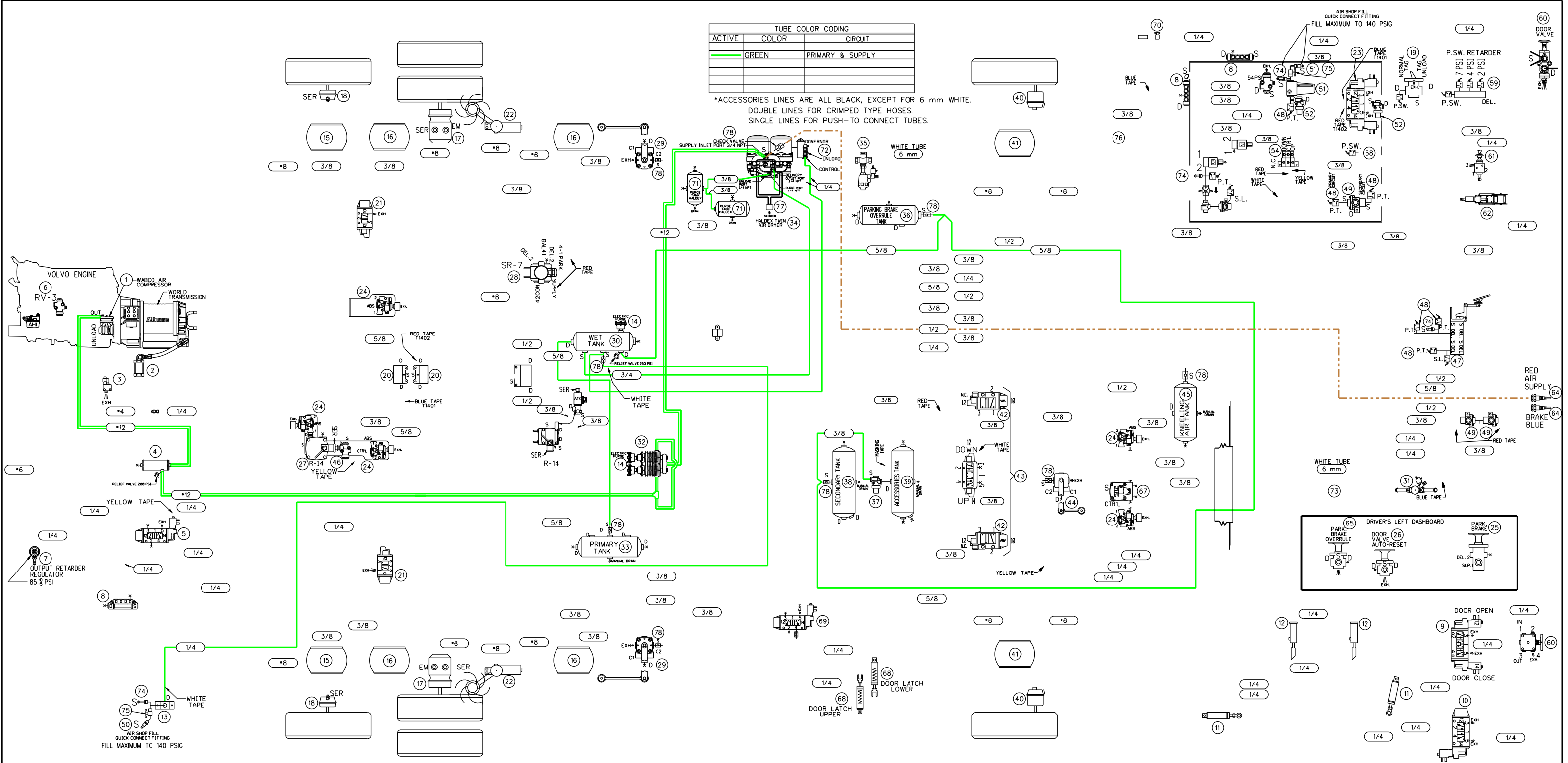


| | | | | | | | |
|------|---|------|---|------|---|------|--|
| 020 | ROTATIVE CHAIN SYSTEM BLOC MANIFOLD | 040 | FRONT BRAKE CHAMBER, KNORR TYPE 24 | 060 | ENTRANCE DOOR MANUAL VALVE, NORGREN D-PRO V82 | 080 | |
| 019 | LIFT TAG AXLE VALVE BENDIX, TW-1 | 039 | ACCESSORIES AIR TANK, JOHNSON WELDING | 059 | PRESSURE SWITCH N.O. ALLISON | 079 | |
| 018 | TAG AXLE BRAKE CHAMBER, KNORR, TYPE 14 | 038 | SECONDARY AIR TANK, JOHNSON WELDING | 058 | PRESSURE SWITCH N.C. KLIXON | 078 | CHECK VALVE |
| 017 | DRIVE AXLE BRAKE CHAMBER, KNORR TYPE 24/24 | 037 | PROTECTION VALVE, BENDIX PR-4, 85 PSI | 057 | PRESSURE REDUCING VALVE, BENDIX RV-3 | 077 | SILENCER HALDEX AIR DRYER |
| 016 | DRIVE AXLE AIR SPRING GOODYEAR, TR11 | 036 | PARKING BRAKE OVERRULE AIR TANK, JOHNSON WELDING | 056 | INLINE QUICK RELEASE VALVE BENDIX, QR-L | 076 | FLOATING TEE FITTING |
| 015 | TAG AXLE AIR SPRING GOODYEAR, TR12 | 035 | 3-WAYS HEATER VALVE SOLENOID BURKERT, SYSTEM 2006 | 055 | SOLENOID ENTRANCE DOOR INTERLOCK PARKER 7131 | 075 | AIR MANUAL VALVE ON-OFF |
| 014 | ELECTRIC PURGE HALDEX OIL SEPARATOR | 034 | HALDEX TWIN AIR DRYER | 054 | MANIFOLD VALVE NORGREN D004.3 | 074 | SCHRADER VALVE 645-LB GATES |
| 013 | REAR AIR FILL VALVE | 033 | PRIMARY AIR TANK, JOHNSON WELDING | 053 | PARKING BRAKE INTERLOCK, PARKER 7131 | 073 | KNEELING MUFFLER EXHAUST |
| 012 | ENTRANCE DOOR LOCK CYLINDER Bimba, 7/8" DIA X 5" STROKE | 032 | OIL SEPARATOR, HALDEX CONSEP | 052 | PROTECTION VALVE, BENDIX PR-4, 70 PSI | 072 | GOVERNOR FOR AIR COMPRESSOR WABCO |
| 011 | ENTRANCE DOOR CYLINDER Bimba, 2.5" DIA X 5" STROKE | 031 | 2-WAYS HEATER VALVE SOLENOID ASCO, SYSTEM 2014 | 051 | AIR FILTER ASCO NUMATICS 71035 | 071 | PURGE TANK HALDEX WITH MANUAL DRAIN VALVE |
| 010 | ENTRANCE DOOR LOCK SOLENOID VALVE NORGREN, V60 | 030 | WET TANK, JOHNSON WELDING | 050 | QUICK CONNECT FITTING AIR HOSE | 070 | DRIVER AIR SEAT MANUAL VALVE |
| 009 | ENTRANCE DOOR BY-FOLD SOLENOID VALVE NORGREN, V60 | 029 | REAR HEIGHT CONTROL VALVE, BARKSDALE 52341 | 049 | DOUBLE CHECK VALVE, BENDIX DC-4 | 069 | WHEEL CHAIR LIFT DOOR LOCK SOLENOID VALVE NORGREN, V60 |
| 008 | AIR MANIFOLD BLOC, PARKER 24M | 028 | I VALVE FOR PARKING BRAKE, BENDIX SR-7 | 048 | PRESSURE TRANSDUCER, VOLVO | 068 | WHEEL CHAIR LIFT DOOR LOCK CYLINDER Bimba, 1.75" DIA X 1" STROKE |
| 007 | REGULATOR OUTPUT RETARDER, NORGREN RO6 | 027 | VALVE FOR SERVICE BRAKE, BENDIX R-14 | 047 | STOP LIGHT SWITCH, BENDIX | 067 | FRONT BRAKES VALVES, BENDIX RELAY VALVE ATR-6 |
| 006 | PRESSURE REDUCTOR VALVE AHI, BENDIX RV-3 | 026 | DOOR VALVE AUTO-RESET | 046 | INVERSION VALVE, BENDIX TR-3 | 066 | BENDIX ATC VALVE |
| 005 | TAG UNLOAD VALVE, NORGREN V60 | 025 | PARKING BRAKE VALVE BENDIX, PP-1 | 045 | KNEELING AIR TANK, JOHNSON WELDING | 065 | EMERGENCY PARKING BRAKE OVERRULE VALVE, BENDIX RD-3 |
| 004 | PING TANK, JOHNSON WELDING | 024 | ABS VALVE MODULATOR BENDIX M40-OR WITH SILENCER | 044 | FRONT HEIGHT CONTROL VALVE, BARKSDALE 52341 | 064 | QUICK COUPLING PARKER, L2C |
| 003 | ALLISON SOLENOID VALVE | 023 | ROTATIVE CHAIN SYSTEM DRIVE AXLE SOLENOID | 043 | KNEELING SUSPENSION VALVE, NORGREN NUGGET 200 | 063 | BRAKE VALVE PEDAL BENDIX, E-10P |
| 002 | ALLISON TRANSMISSION RETARDER CYLINDER | 022 | SWIVEL CHAIN UNIT WITH ARM ASSEMBLY | 042 | KNEELING SUSPENSION VALVE, NORGREN NUGGET 200 | 062 | STEERING WHEEL COLUMN, ZF |
| 001 | AIR COMPRESSOR WABCO 636 | 021 | REAR SUSPENSION VALVE NORGREN, NUGGET 200 | 041 | FRONT AIR SPRING, GOODYEAR 1R12 | 061 | ADJUSTABLE STEERING WHEEL MANUAL VALVE, MAC 1111A-032 |
| ITEM | DESCRIPTION | ITEM | DESCRIPTION | ITEM | DESCRIPTION | ITEM | DESCRIPTION |

VEHICLE DESCRIPTION : -COACH X3 WITH FRONT BEAM AXLE SUSPENSION
 -SUSPENSION FRONT KNEELING SYSTEM
 -TRANSMISSION WORLD WITH "RETARDER"
 -ABS BRAKE SYSTEM WITH "PARKING BRAKES OVERRULE"
 -HALDEX TWIN AIR DRYER WITH HALDEX OIL SEPARATOR
 -TOWING QUICK CONNECT FRONT BUMPER
 -BY-FOLD ENTRANCE DOOR WITH INTERLOCK BRAKE SYSTEM
 -WITH WHEEL CHAIR LIFT DOOR AIR LOCK
 -AIR COMPRESSOR WABCO DIRECT DRIVE ON VOLVO ENGINE
 -UNLOAD TAG SUSPENSION SYSTEM

NOTE 1 : SoXX AND SoXX ARE ELECTRIC CONNECTORS NAME TAG.

LEGENDE:
 -SER- SERVICE
 -EM- EMERGENCY
 -EXH- EXHAUST
 -BAL- BALANCE
 -RES- RESERVOIR SERVICE
 -P- PRESSION (ALIMENTATION)
 -A- ACCESSORE (DEL)
 -S- ALIMENTATION (SUPPLY)
 -S.L- STOP LIGHT SWITCH
 -R.C- RALLY CLUSE
 -P.T- PRESSURE TANK
 -P.S- PRESSURE SWITCH
 -A- AIR
 -D- DRAIN
 -S- SOLENOIDE
 -SP- SPRING



| | | | |
|---|---|---|--|
| 020 ROTATIVE CHAIN SYSTEM BLOC MANIFOLD | 040 FRONT BRAKE CHAMBER, KNORR TYPE 24 | 060 ENTRANCE DOOR MANUAL VALVE, NORGREN D-PRO V82 | 080 |
| 019 LIFT TAG AXLE VALVE BENDIX, TW-1 | 039 ACCESSORIES AIR TANK, JOHNSON WELDING | 059 PRESSURE SWITCH N.O. ALLISON | 079 |
| 018 TAG AXLE BRAKE CHAMBER KNORR, TYPE 14 | 038 SECONDARY AIR TANK, JOHNSON WELDING | 058 PRESSURE SWITCH N.C. KLIXON | 078 CHECK VALVE |
| 017 DRIVE AXLE BRAKE CHAMBER, KNORR TYPE 24/24 | 037 PROTECTION VALVE, BENDIX PR-4, 85 PSI | 057 PRESSURE REDUCING VALVE, BENDIX RV-3 | 077 SILENCER HALDEX AIR DRYER |
| 016 DRIVE AXLE AIR SPRING GOODYEAR, TR11 | 036 PARKING BRAKE OVERRULE AIR TANK, JOHNSON WELDING | 056 INLINE QUICK RELEASE VALVE BENDIX, QR-L | 076 FLOATING TEE FITTING |
| 015 TAG AXLE AIR SPRING GOODYEAR, TR12 | 035 3-WAYS HEATER VALVE SOLENOID BURKERT, SYSTEM 2006 | 055 SOLENOID ENTRANCE DOOR INTERLOCK PARKER 7131 | 075 AIR MANUAL VALVE ON-OFF |
| 014 ELECTRIC PURGE HALDEX OIL SEPARATOR | 034 HALDEX TWIN AIR DRYER | 054 MANIFOLD VALVE NORGREN D0043 | 074 SCHRADER VALVE 645-LB GATES |
| 013 REAR AIR FILL VALVE | 033 PRIMARY AIR TANK, JOHNSON WELDING | 053 PARKING BRAKE INTERLOCK, PARKER 7131 | 073 KNEELING MUFFLER EXHAUST |
| 012 ENTRANCE DOOR LOCK CYLINDER Bimba, 7/8" DIA X 5" STROKE | 032 OIL SEPARATOR, HALDEX CONSEP | 052 PROTECTION VALVE, BENDIX PR-4, 70 PSI | 072 GOVERNOR FOR AIR COMPRESSOR WABCO |
| 011 ENTRANCE DOOR CYLINDER Bimba, 2.5" DIA X 5" STROKE | 031 2-WAYS HEATER VALVE SOLENOID ASCO, SYSTEM 2014 | 051 AIR FILTER ASCO NUMATICS 71035 | 071 PURGE TANK HALDEX WITH MANUAL DRAIN VALVE |
| 010 ENTRANCE DOOR LOCK SOLENOID VALVE NORGREN, V60 | 030 WET TANK, JOHNSON WELDING | 050 QUICK CONNECT FITTING AIR HOSE | 070 DRIVER AIR SEAT MANUAL VALVE |
| 009 ENTRANCE DOOR BY-FOLD SOLENOID VALVE NORGREN, V60 | 029 REAR HEIGHT CONTROL VALVE, BARKSDALE 52341 | 049 DOUBLE CHECK VALVE, BENDIX DC-4 | 069 WHEEL CHAIR LIFT DOOR LOCK SOLENOID VALVE NORGREN, V60 |
| 008 AIR MANIFOLD BLOC, PARKER 24M | 028 I VALVE FOR PARKING BRAKE, BENDIX SR-7 | 048 PRESSURE TRANSDUCER, VOLVO | 068 WHEEL CHAIR LIFT DOOR LOCK CYLINDER Bimba, 1.75" DIA X 1" STROKE |
| 007 REGULATOR OUTPUT RETARDER, NORGREN RO6 | 027 VALVE FOR SERVICE BRAKE, BENDIX R-14 | 047 STOP LIGHT SWITCH, BENDIX | 067 FRONT BRAKES VALVES, BENDIX RELAY VALVE ATR-6 |
| 006 PRESSURE REDUCTOR VALVE AHI, BENDIX RV-3 | 026 DOOR VALVE AUTO-RESET | 046 INVERSION VALVE, BENDIX TR-3 | 066 BENDIX ATC VALVE |
| 005 TAG UNLOAD VALVE, NORGREN V60 | 025 PARKING BRAKE VALVE BENDIX, PP-1 | 045 KNEELING AIR TANK, JOHNSON WELDING | 065 EMERGENCY PARKING BRAKE OVERRULE VALVE, BENDIX RD-3 |
| 004 PING TANK, JOHNSON WELDING | 024 ABS VALVE MODULATOR BENDIX M40-OR WITH SILENCER | 044 FRONT HEIGHT CONTROL VALVE, BARKSDALE 52341 | 064 QUICK COUPLING PARKER, L2C |
| 003 ALLISON SOLENOID VALVE | 023 ROTATIVE CHAIN SYSTEM DRIVE AXLE SOLENOID | 043 KNEELING SUSPENSION VALVE, NORGREN NUGGET 200 | 063 BRAKE VALVE PEDAL BENDIX, E-10P |
| 002 ALLISON TRANSMISSION RETARDER CYLINDER | 022 SWIVEL CHAIN UNIT WITH ARM ASSEMBLY | 042 KNEELING SUSPENSION VALVE, NORGREN NUGGET 200 | 062 STEERING WHEEL COLUMN, ZF |
| 001 AIR COMPRESSOR WABCO 636 | 021 REAR SUSPENSION VALVE NORGREN, NUGGET 200 | 041 FRONT AIR SPRING, GOODYEAR 1R12 | 061 ADJUSTABLE STEERING WHEEL MANUAL VALVE, MAC 1111A-032 |
| ITEM DESCRIPTION | ITEM DESCRIPTION | ITEM DESCRIPTION | ITEM DESCRIPTION |

NOTE 1 : SoXX AND SoXX ARE ELECTRIC CONNECTORS NAME TAG.

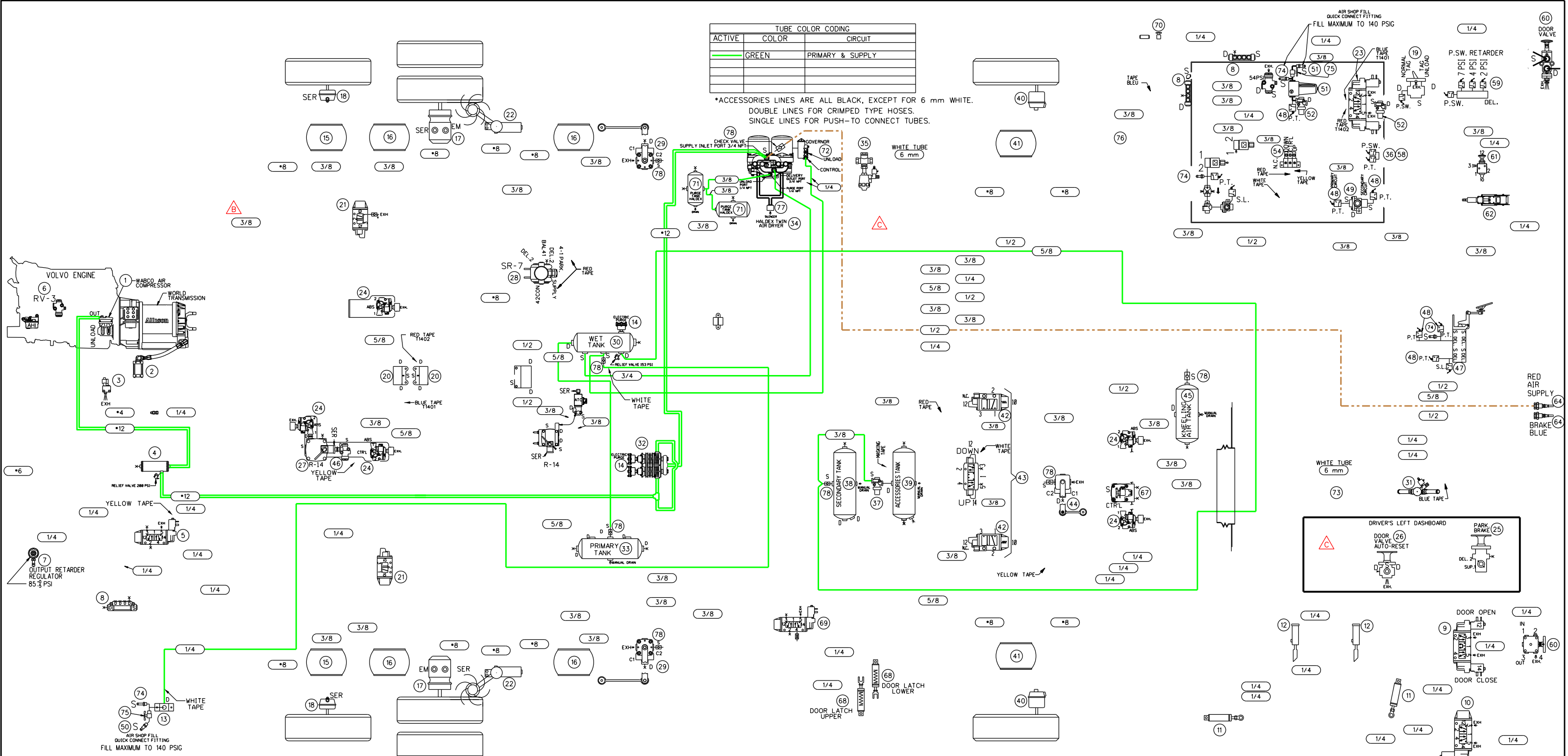
| LEGENDE: | | |
|----------------|-----------------------------|-------------------------|
| -SER- SERVICE | -RES- RESEPARATOR SERVICE | -S-L- STOP LIGHT SWITCH |
| -EM- EMERGENCY | -P- PRESSION (ALIMENTATION) | -N.C.- NORMALLY CLOSE |
| -EXH- EXHAUST | -A- ACCESSORE (DEL) | -P.T.- PARKING BRAKE |
| -BAL- BALANCE | -T- TUBER (VALVE, OR DEL) | -S- SHOCK |
| | -S- ALIMENTATION (SUPPLY) | -S- SOLENOIDE |
| | | -SP- SPRING |

PREVOST

PNEUMATIC SCHEMATIC COACH X3 NYCTA
MAIN AIR SUPPLY

REV.: A
DATE: 2020/09/28

PAGE:
D140445 P8



| TUBE COLOR CODING | | |
|-------------------|-------|------------------|
| ACTIVE | COLOR | CIRCUIT |
| | GREEN | PRIMARY & SUPPLY |

*ACCESSORIES LINES ARE ALL BLACK, EXCEPT FOR 6 mm WHITE.
DOUBLE LINES FOR CRIMPED TYPE HOSES.
SINGLE LINES FOR PUSH-TO CONNECT TUBES.

| | | | |
|---|---|---|--|
| 020 ROTATIVE CHAIN SYSTEM BLOC MANIFOLD | 040 FRONT BRAKE CHAMBER, KNORR TYPE 24 | 060 ENTRANCE DOOR MANUAL VALVE, NORGREN D-PRO V82 | 080 |
| 019 LIFT TAG AXLE VALVE, BENDIX, TW-1 | 039 ACCESSORIES AIR TANK, JOHNSON WELDING | 059 PRESSURE SWITCH N.O. ALLISON | 079 |
| 018 TAG AXLE BRAKE CHAMBER, KNORR, TYPE 14 | 038 SECONDARY AIR TANK, JOHNSON WELDING | 058 PRESSURE SWITCH N.C. KLIXON | 078 CHECK VALVE |
| 017 DRIVE AXLE BRAKE CHAMBER, KNORR TYPE 24/24 | 037 PROTECTION VALVE, BENDIX PR-4, 85 PSI | 057 PRESSURE REDUCING VALVE, BENDIX RV-3 | 077 SILENCER HALDEX AIR DRYER |
| 016 DRIVE AXLE AIR SPRING GOODYEAR, TR11 | 036 PRESSURE TRANSDUCER (0-12 BAR) | 056 INLINE QUICK RELEASE VALVE BENDIX, OR-L | 076 FLOATING TEE FITTING |
| 015 TAG AXLE AIR SPRING GOODYEAR, TR12 | 035 3-WAYS HEATER VALVE SOLENOID BURKERT, SYSTEM 2006 | 055 SOLENOID ENTRANCE DOOR INTERLOCK PARKER 7131 | 075 AIR MANUAL VALVE ON-OFF |
| 014 ELECTRIC PURGE HALDEX OIL SEPARATOR | 034 HALDEX TWIN AIR DRYER | 054 MANIFOLD VALVE NORGREN D0043 | 074 SCHRADER VALVE 645-LB GATES |
| 013 REAR AIR FILL VALVE | 033 PRIMARY AIR TANK, JOHNSON WELDING | 053 PARKING BRAKE INTERLOCK, PARKER 7131 | 073 KNEELING MUFFLER EXHAUST |
| 012 ENTRANCE DOOR LOCK CYLINDER Bimba, 7/8" DIA X 5" STROKE | 032 OIL SEPARATOR, HALDEX CONSEP | 052 PROTECTION VALVE, BENDIX PR-4, 70 PSI | 072 GOVERNOR FOR AIR COMPRESSOR WABCO |
| 011 ENTRANCE DOOR CYLINDER Bimba, 2.5" DIA X 5" STROKE | 031 2-WAYS HEATER VALVE SOLENOID ASCO, SYSTEM 2014 | 051 AIR FILTER ASCO NUMATICS 71035 | 071 PURGE TANK HALDEX WITH MANUAL DRAIN VALVE |
| 010 ENTRANCE DOOR LOCK SOLENOID VALVE, NORGREN, V60 | 030 WET TANK, JOHNSON WELDING | 050 QUICK CONNECT FITTING AIR HOSE | 070 DRIVER AIR SEAT MANUAL VALVE |
| 009 ENTRANCE DOOR BY-FOLD SOLENOID VALVE, NORGREN, V60 | 029 REAR HEIGHT CONTROL VALVE, BARKSDALE 52341 | 049 DOUBLE CHECK VALVE, BENDIX DC-4 | 069 WHEEL CHAIR LIFT DOOR LOCK SOLENOID VALVE, NORGREN, V60 |
| 008 AIR MANIFOLD BLOC, PARKER 24M | 028 VALVE FOR PARKING BRAKE, BENDIX SR-7 | 048 PRESSURE TRANSDUCER, VOLVO | 068 WHEEL CHAIR LIFT DOOR LOCK CYLINDER Bimba, 1.75" DIA X 1" STROKE |
| 007 REGULATOR OUTPUT RETARDER, NORGREN R06 | 027 VALVE FOR SERVICE BRAKE, BENDIX R-14 | 047 STOP LIGHT SWITCH, BENDIX | 067 FRONT BRAKES VALVES, BENDIX RELAY VALVE ATR-6 |
| 006 PRESSURE REDUCTOR VALVE AHI, BENDIX RV-3 | 026 PARK VALVE AUTO-RESET | 046 INVERSION VALVE, BENDIX TR-3 | 066 BENDIX ATC VALVE |
| 005 TAG UNLOAD VALVE, NORGREN V60 | 025 PARKING BRAKE VALVE BENDIX, PP-1 | 045 KNEELING AIR TANK, JOHNSON WELDING | 065 |
| 004 PING TANK, JOHNSON WELDING | 024 ABS VALVE MODULATOR BENDIX M40-OR WITH SILENCER | 044 FRONT HEIGHT CONTROL VALVE, BARKSDALE 52341 | 064 QUICK COUPLING PARKER, L2C |
| 003 ALLISON SOLENOID VALVE | 023 ROTATIVE CHAIN SYSTEM DRIVE AXLE SOLENOID | 043 KNEELING SUSPENSION VALVE, NORGREN NUGGET 200 | 063 BRAKE VALVE PEDAL BENDIX, E-10P |
| 002 ALLISON TRANSMISSION RETARDER CYLINDER | 022 SWIVEL CHAIN UNIT WITH ARM ASSEMBLY | 042 KNEELING SUSPENSION VALVE, NORGREN NUGGET 200 | 062 STEERING WHEEL COLUMN, ZF |
| 001 AIR COMPRESSOR WABCO 636 | 021 REAR SUSPENSION VALVE NORGREN, NUGGET 200 | 041 FRONT AIR SPRING, GOODYEAR 1R12 | 061 ADJUSTABLE STEERING WHEEL MANUAL VALVE, MAC 1111A-032 |

VEHICLE DESCRIPTION : -COACH X3 WITH FRONT BEAM AXLE SUSPENSION
-SUSPENSION FRONT KNEELING SYSTEM
-TRANSMISSION WORLD WITH "RETARDER"
-ABS & BRAKE SYSTEM WITH "PARKING BRAKES OVERRULE"
-HALDEX TWIN AIR DRYER
-WITH HALDEX OIL SEPARATOR
-TOWING QUICK CONNECT FRONT BUMPER
-BY-FOLD ENTRANCE DOOR WITH INTERLOCK BRAKE SYSTEM
-WITH WHEEL CHAIR LIFT DOOR AIR LOCK
-AIR COMPRESSOR WABCO DIRECT DRIVE ON VOLVO ENGINE
-UNLOAD TAG SUSPENSION SYSTEM

NOTE 1 : Soxx AND Sexx ARE ELECTRIC CONNECTORS NAME TAG.

LEGENDE :

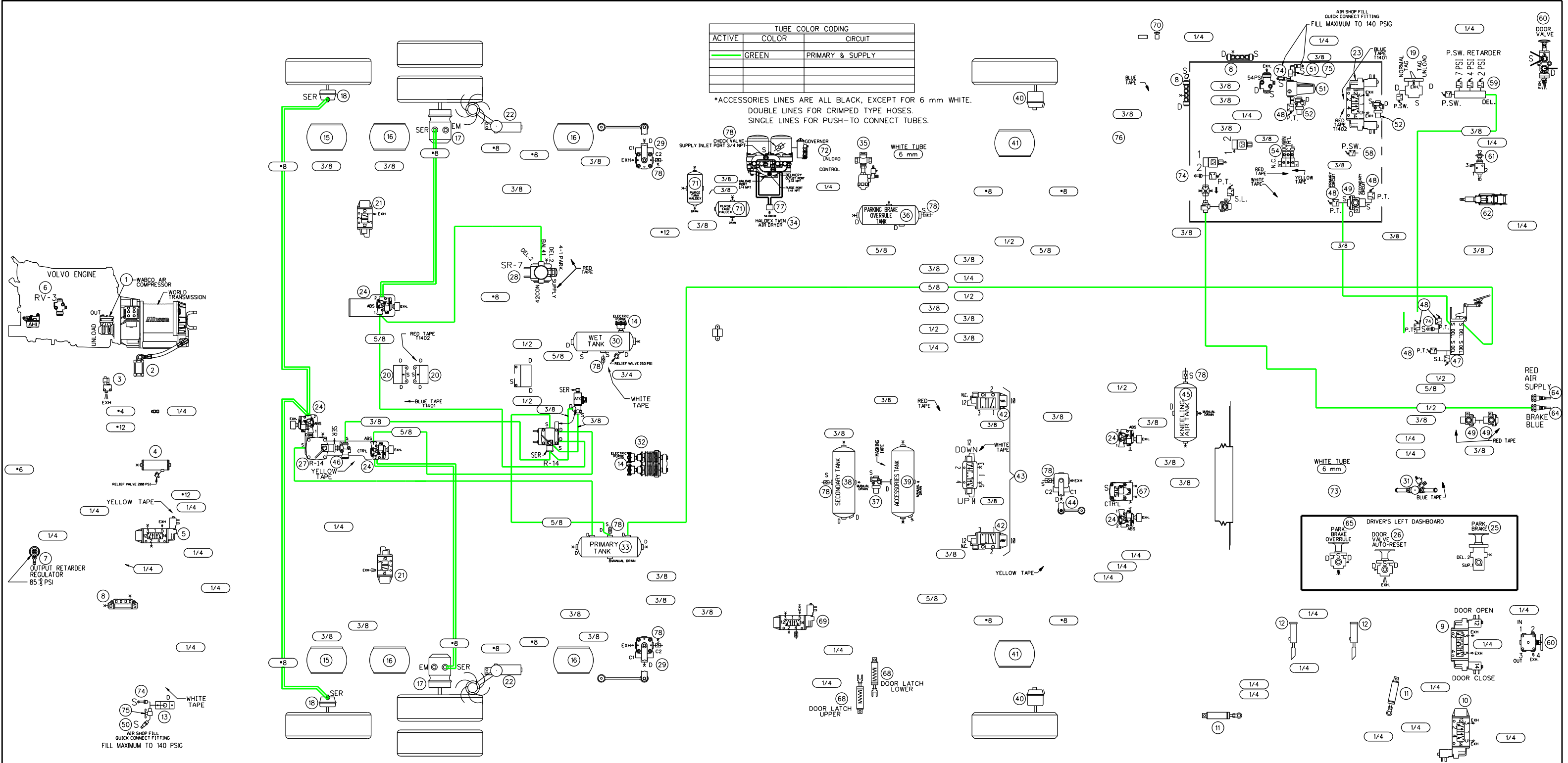
| | | | |
|------------------|-------------------------------|---------------------------|----------------------------|
| "SER" : SERVICE | "RES-1" : RESERVOIR SERVICE | "N.C." : NORMALLY CLOSED | "S.L." : STOP LIGHT SWITCH |
| "EM" : EMERGENCY | "P" : PRESSURE ALIMENTATION | "P.C." : PRESSURE CONTROL | "N.O." : NORMALLY OPEN |
| "EXH" : EXHAUST | "A" : ACCESSOIRE DELI | "P.S." : PRESSURE SWITCH | "S" : SOLENOIDE |
| "BAL" : BALANCE | "D" : DELIVERY (CYL. OU DELI) | "S.L." : SUPPLY | "SP" : SPRING |



DESCRIPTION: PNEUMATIC SCHEMATIC COACH X3 NYCTA MAIN AIR SUPPLY

REV.: B
DATE: 2020/09/28

PAGE: D140445 P8



| | | | |
|---|---|---|--|
| 020 ROTATIVE CHAIN SYSTEM BLOC MANIFOLD | 040 FRONT BRAKE CHAMBER, KNORR TYPE 24 | 060 ENTRANCE DOOR MANUAL VALVE, NORGREN D-PRO V82 | 080 |
| 019 LIFT TAG AXLE VALVE BENDIX, TW-1 | 039 ACCESSORIES AIR TANK, JOHNSON WELDING | 059 PRESSURE SWITCH N.O. ALLISON | 079 |
| 018 TAG AXLE BRAKE CHAMBER KNORR, TYPE 14 | 038 SECONDARY AIR TANK, JOHNSON WELDING | 058 PRESSURE REDUCING VALVE, BENDIX RV-3 | 078 CHECK VALVE |
| 017 DRIVE AXLE BRAKE CHAMBER, KNORR TYPE 24/24 | 037 PROTECTION VALVE, BENDIX PR-4, 85 PSI | 057 PRESSURE REDUCING VALVE, BENDIX RV-3 | 077 SILENCER HALDEX AIR DRYER |
| 016 DRIVE AXLE AIR SPRING GOODYEAR, TR11 | 036 PARKING BRAKE OVERRULE AIR TANK, JOHNSON WELDING | 056 INLINE QUICK RELEASE VALVE BENDIX, QR-L | 076 FLOATING TEE FITTING |
| 015 TAG AXLE AIR SPRING GOODYEAR, TR12 | 035 3-WAYS HEATER VALVE SOLENOID BURKERT, SYSTEM 2006 | 055 SOLENOID ENTRANCE DOOR INTERLOCK PARKER 7131 | 075 AIR MANUAL VALVE ON-OFF |
| 014 ELECTRIC PURGE HALDEX OIL SEPARATOR | 034 HALDEX TWIN AIR DRYER | 054 MANIFOLD VALVE NORGREN D0043 | 074 SCHRADER VALVE 645-LB GATES |
| 013 REAR AIR FILL VALVE | 033 PRIMARY AIR TANK, JOHNSON WELDING | 053 PARKING BRAKE INTERLOCK, PARKER 7131 | 073 KNEELING MUFFLER EXHAUST |
| 012 ENTRANCE DOOR LOCK CYLINDER Bimba, 7/8" DIA X 5" STROKE | 032 OIL SEPARATOR, HALDEX CONSEP | 052 PROTECTION VALVE, BENDIX PR-4, 70 PSI | 072 GOVERNOR FOR AIR COMPRESSOR WABCO |
| 011 ENTRANCE DOOR CYLINDER Bimba, 2.5" DIA X 5" STROKE | 031 2-WAYS HEATER VALVE SOLENOID ASCO, SYSTEM 2014 | 051 AIR FILTER ASCO NUMATICS 71035 | 071 PURGE TANK HALDEX WITH MANUAL DRAIN VALVE |
| 010 ENTRANCE DOOR LOCK SOLENOID VALVE NORGREN, V60 | 030 WET TANK, JOHNSON WELDING | 050 QUICK CONNECT FITTING AIR HOSE | 070 DRIVER AIR SEAT MANUAL VALVE |
| 009 ENTRANCE DOOR BY-FOLD SOLENOID VALVE NORGREN, V60 | 029 REAR HEIGHT CONTROL VALVE, BARKSDALE 52341 | 049 DOUBLE CHECK VALVE, BENDIX DC-4 | 069 WHEEL CHAIR LIFT DOOR LOCK SOLENOID VALVE NORGREN, V60 |
| 008 AIR MANIFOLD BLOC, PARKER 24M | 028 I VALVE FOR PARKING BRAKE, BENDIX SR-7 | 048 PRESSURE TRANSDUCER, VOLVO | 068 WHEEL CHAIR LIFT DOOR LOCK CYLINDER Bimba, 1.75" DIA X 1" STROKE |
| 007 REGULATOR OUTPUT RETARDER, NORGREN R06 | 027 VALVE FOR SERVICE BRAKE, BENDIX R-14 | 047 STOP LIGHT SWITCH, BENDIX | 067 FRONT BRAKES VALVES, BENDIX RELAY VALVE ATR-6 |
| 006 PRESSURE REDUCTOR VALVE AHI, BENDIX RV-3 | 026 DOOR VALVE AUTO-RESET | 046 INVERSION VALVE, BENDIX TR-3 | 066 BENDIX ATC VALVE |
| 005 TAG UNLOAD VALVE, NORGREN V60 | 025 PARKING BRAKE VALVE BENDIX, PP-1 | 045 KNEELING AIR TANK, JOHNSON WELDING | 065 EMERGENCY PARKING BRAKE OVERRULE VALVE, BENDIX RD-3 |
| 004 PING TANK, JOHNSON WELDING | 024 ABS VALVE MODULATOR BENDIX M40-OR WITH SILENCER | 044 FRONT HEIGHT CONTROL VALVE, BARKSDALE 52341 | 064 QUICK COUPLING PARKER, L2C |
| 003 ALLISON SOLENOID VALVE | 023 ROTATIVE CHAIN SYSTEM DRIVE AXLE SOLENOID | 043 KNEELING SUSPENSION VALVE, NORGREN NUGGET 200 | 063 BRAKE VALVE PEDAL BENDIX, E-10P |
| 002 ALLISON TRANSMISSION RETARDER CYLINDER | 022 SWIVEL CHAIN UNIT WITH ARM ASSEMBLY | 042 KNEELING SUSPENSION VALVE, NORGREN NUGGET 200 | 062 STEERING WHEEL COLUMN, ZF |
| 001 AIR COMPRESSOR WABCO 636 | 021 REAR SUSPENSION VALVE NORGREN, NUGGET 200 | 041 FRONT AIR SPRING, GOODYEAR 1R12 | 061 ADJUSTABLE STEERING WHEEL MANUAL VALVE, MAC 1111A-032 |
| ITEM DESCRIPTION | ITEM DESCRIPTION | ITEM DESCRIPTION | ITEM DESCRIPTION |

VEHICLE DESCRIPTION : -COACH X3 WITH FRONT BEAM AXLE SUSPENSION
 -SUSPENSION FRONT KNEELING SYSTEM
 -TRANSMISSION WORLD WITH "RETARDER"
 -ABS BRAKE SYSTEM WITH "PARKING BRAKES OVERRULE"
 -HALDEX TWIN AIR DRYER WITH HALDEX OIL SEPARATOR
 -TOWING QUICK CONNECT FRONT BUMPER
 -BY-FOLD ENTRANCE DOOR WITH INTERLOCK BRAKE SYSTEM
 -WITH WHEEL CHAIR LIFT DOOR AIR LOCK
 -AIR COMPRESSOR WABCO DIRECT DRIVE ON VOLVO ENGINE
 -UNLOAD TAG SUSPENSION SYSTEM

NOTE 1 : SoXX AND SoXX ARE ELECTRIC CONNECTORS NAME TAG.

LEGENDE:
 -SER- SERVICE
 -EM- EMERGENCY
 -EXH- EXHAUST
 -BAL- BALANCE
 -RES- RESERVOIR SERVICE
 -P- PRESSURE (ALIMENTATION)
 -A- ACCESSORE (DEL)
 -AL- ALIMENTATION (SUPPLY)
 -S- SUPPLY (DEL)
 -N.C.- NORMALLY CLOSE
 -N.O.- NORMALLY OPEN
 -P.S.- PRESSURE SWITCH
 -A- AIR
 -D- DRAIN
 -S- SOLENOID
 -SP- SPRING



DESCRIPTION:
 PNEUMATIC SCHEMATIC X3 NYCTA
 REAR BRAKE , PRIMARY GREEN COLOR TUBES

