

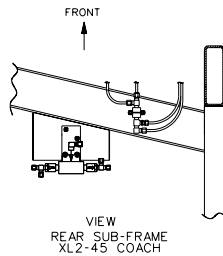
SEE VIEW
REAR SUB-FRAME
XL2-45 COACH

NOTE:

CONTROL VALVE OPT. "LOW-BUOY" , "A" OR "B" SETTING:

POSITION "A": VALVE IS OPEN,
AIR FLOW BETWEEN SUPPLY (S) AND
DELIVERY (D) , LOW-BUOY IS NOT IN FUNCTION.

POSITION "B": VALVE CLOSED,
AIR DOES'NT FLOW BETWEEN SUPPLY (S) AND
DELIVERY (D) , LOW-BUOY IS IN FUNCTION.



TUBE COLOR CODING	
ACTIVE COLOR	CIRCUIT
→ → RED	SECONDARY
→ → GREEN	PRIMARY & SUPPLY
→ → YELLOW	PARKING BRAKE
→ → BLUE	SUSPENSION
→ → BLACK	ACCESSORIES

BALLOON	PIPE
*1	3/8" O.D. BLUE
*2	1/4" O.D. BLACK
——	STD PIPING
——	OPTIONAL PIPING

XL2-45 COACH,
ENGINE 2002 WITH
FRONT BEAM AXLE

WITH OPTION FRONT KNEELING
& LOW-BUOY COMBINATION
D140301 P2 REV. A

DATE : 2003/02