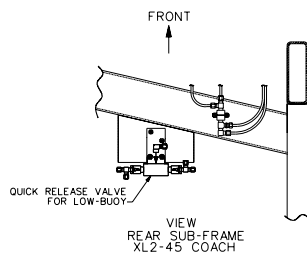


NOTE:

CONTROL VALVE OPT. "LOW-BUOY" , "A" OR "B" SETTING:

POSITION "A": VALVE IS OPEN,
AIR FLOW BETWEEN SUPPLY (S) AND
DELIVERY (D) , LOW-BUOY IS NOT IN FUNCTION.

POSITION "B": VALVE CLOSED,
AIR DOES'NT FLOW BETWEEN SUPPLY (S) AND
DELIVERY (D) , LOW-BUOY IS IN FUNCTION.



TUBE COLOR CODING	
ACTIVE COLOR	CIRCUIT
→→→ RED	SECONDARY
→→→ GREEN	PRIMARY & SUPPLY
→→→ YELLOW	PARKING BRAKE
→→→ BLUE	SUSPENSION
→→→ BLACK	ACCESSORIES

BALLOON	PIPE
*1	3/8" O.D. BLUE
*2	3/4" O.D. BLACK
*3	1/4" O.D. BLACK
———	STD PIPING
———	OPTIONAL PIPING

XL2-45 COACH,
ENGINE 2002
WITH I. F. S.

WITH OPTION FRONT KNEELING
& REAR LOW-BUOY COMBINATION

D140300 P2 REV. A

DATE : 2003/03