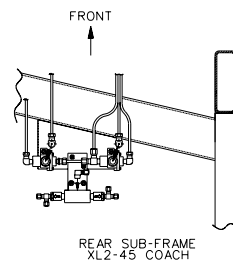


NOTE:

CONTROL VALVE OPT. "LOW-BUOY", "A" OR "B" SETTING:

POSITION "A": VALVE IS OPEN,
AIR FLOW BETWEEN SUPPLY (S) AND
DELIVERY (D), LOW-BUOY IS NOT IN FUNCTION.

POSITION "B": VALVE CLOSED,
AIR DOESN'T FLOW BETWEEN SUPPLY (S) AND
DELIVERY (D), LOW-BUOY IS IN FUNCTION.



TUBE COLOR CODING	
ACTIVE COLOR	CIRCUIT
→ → RED	SECONDARY
→ → GREEN	PRIMARY & SUPPLY
→ → YELLOW	PARKING BRAKE
→ → BLUE	SUSPENSION
→ → BLACK	ACCESSORIES

BALLOON	PIPE
*1	3/8" O.D. BLUE
*2	1/2" O.D. BLUE
*3	3/4" O.D. BLACK
*4	1/4" O.D. BLACK
———	STD PIPING
———	OPTIONAL PIPING

XL2-45 COACH,
ENGINE 2002
WITH I. F. S.

WITH OPTION FRONT
KNEELING, LOW-BUOY &
HIGH-BUOY COMBINATION
D140300 P4 REV. A

DATE : 2003/02