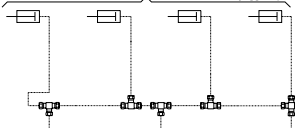
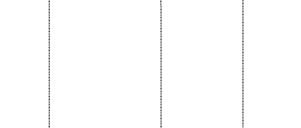


ACTIVE	COLOR	CIRCUIT
→ →	RED	SECONDARY
→ →	GREEN	PRIMARY & SUPPLY
→ →	YELLOW	PARKING BRAKE
→ →	BLUE	SUSPENSION
→ →	BLACK	ACCESSORIES

DOOR AIR LOCK FOR LUGGAGE COMPARTMENT



DOOR AIR LOCK FOR LUGGAGE COMPARTMENT



NOTE #1 : OPTION OUTPUT RETARDER ON TRANSMISSION.  
 #2 : N.C. = NORMALLY CLOSE  
 N.O. = NORMALLY OPEN

DATE: 2004/04

#D140297P1 REV.F  
 H3-41 & H3-45 COACHES, ENGINE 2002  
 WITH FRONT BEAM AXLE