

PREVOST

Instruction Sheet

IS-03152

REPLACING THE SMALL A/C TECUMSEH COMPRESSOR WITH SELTEC COMPRESSOR ON XLII MTH (W5)

MATERIAL

IMPORTANT: IN ADDITION TO KIT #453897, MAKE SURE THAT 220 ML OF PAG OIL IS AVAILABLE BEFORE PERFORMING THIS MODIFICATION; OTHERWISE ORDER PART #950382.

Kit #453897 includes the following parts:

Part No.	Description	Qty
051992	Cap	1
3852496	Washer, Split Lock	3
453514	Refrigerant Moisture Indicator Assembly	1
453898	Hose (35" long)	1
453899	Hose (49½" long)	1
453900	Hose (25" long)	1
453901	Hose (49½" long)	1
454066	Valve Assembly, High Pressure Service	1
454072	Bracket, High Pressure Service Valve	1
454105	Decal, Refrigerant	1
454107	Hose (34 7/16" long)	1
454109	Hose (8 1/16" long)	1
454127	Tensioner, Compressor Belt	1
454137	Base, Compressor Pivot	1
454138	Pivot, Compressor	2
454143	Arm, Compressor Belt Tensioner	2
454229	Support, Condenser Rear	1
454230	Support, Condenser Front	1
500065	Screw, Cap, Hex Head M10 – 1.5 x 30 G10.9	3
5001565	Screw, Cap, Hex Head ½-13 x 1.0 G5	2
500211	Washer, Flat	4

500470	Washer, Split Lock	1
500574	Screw, Machine, Truss Head, Phillips SS ¼	1
500747	Washer, Split Lock	1
500786	Nut, Hexagonal ZP 10-24	1
500804	Washer, Flat	3
500832	Washer, Flat	3
500944	Washer, Split Lock	2
500957	Screw, Tapping, Binding Head, Phillips #10 x ¾	6
501304	Plug, Male Square Head ¼ NPT 	1
502851	Nut, Hexagonal M8-1.25	1
502927	Screw, Cap, Hex Head M8 x 50 G8.8	1
504026	Clamp, Hose SS 2.8125" – 3.75"	2
504339	Rivet, Pop, Dome Head SS	5
509805	Screw, Tapping, Pan Head, Phillips Black #10x½	3
560093	Terminal, Ring R16-12/5/16A3/8	1
560673	Wire, Electrical 16 gage Black (12" long)	1
561565	Seal, Cable	2
561566	Connector	1
561568	Pin, Male Contact	2
562060	Clamp, Retaining	1
871343	A/C Pipe	1
871344	Valve, Thermal Expansion c/w pipe	1
950370	Filter Dryer	1
950372	Compressor Seltec TH16HD	1
950381	Condenser	1
952629	Clamp, Retaining ZP	3
952631	Clamp, Retaining ZP	1
955920	Washer, Split Lock	2
970949	Screw, Cap Hex Head M10 x 35 G8.8	6
970970	Screw, Cap Hex Head M12 x 30 G8.8	3
971083	Nut, Hexagonal Stover M10-1.5	6
971084	Nut, Hexagonal Stover M12-1.75	2
IS-03152	Instruction Sheet	1
FI-03152	Feuille d'instructions	1

PROCEDURE

Warning: Park vehicle safely, apply parking brake, stop engine and set battery master switch(es) to the OFF position prior to working on the vehicle.

REMOVAL

1. Remove Tecumseh compressor complete with its supports and belt tensioner.

Note: Set belt aside for later use.

2. Remove condenser and its supports.
3. Remove hoses connected to condenser.
4. Remove filter-dryer but keep the hose connecting filter-dryer to high pressure rigid tubing.
5. Remove hoses located between former compressor and high and low pressure switches.
6. Disconnect low pressure hose then remove by-pass valve and high pressure switch. Screw on male plug (501304) to the low pressure switch "T" connector (refer to figure 6).

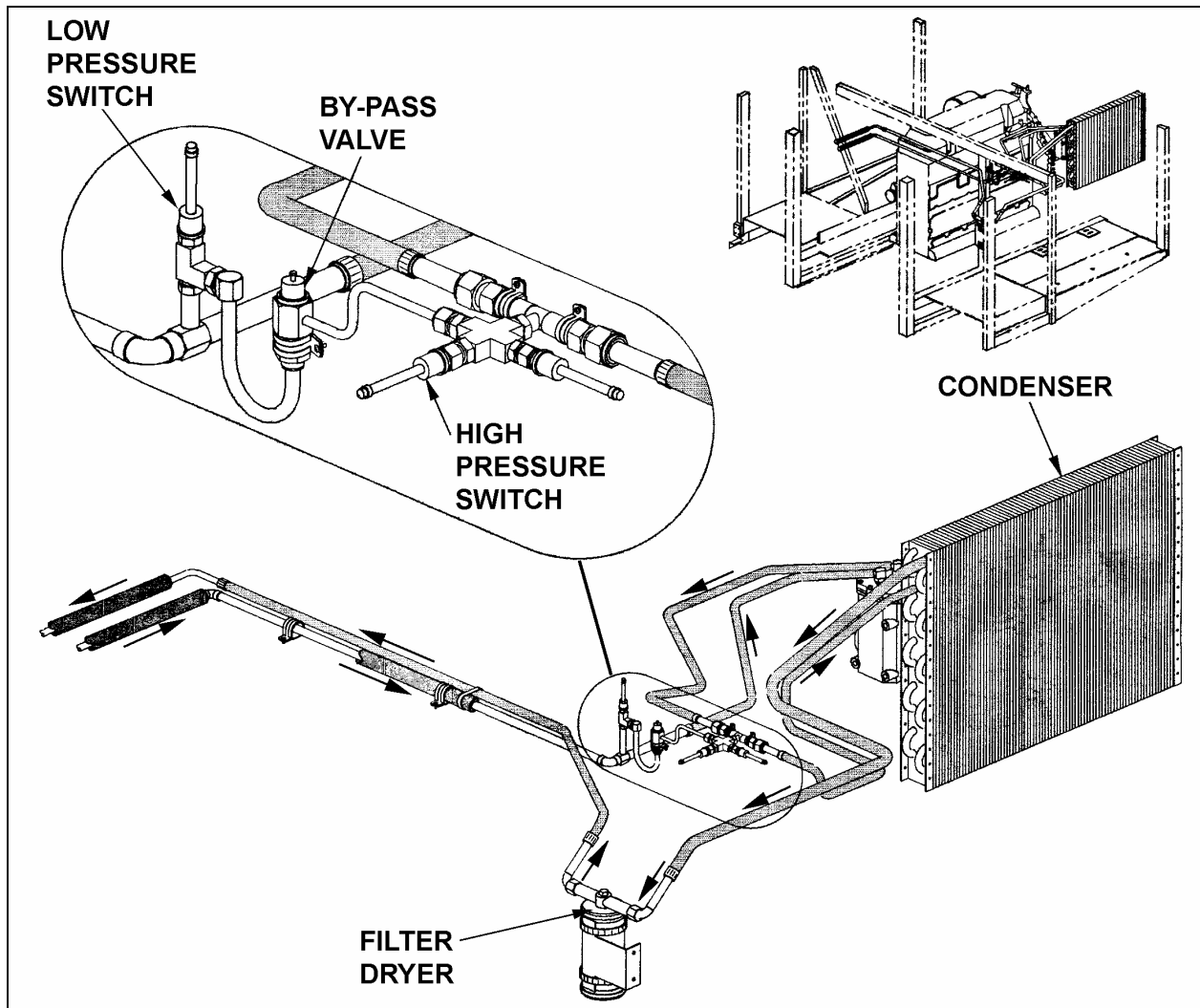


FIGURE 1: FORMER INSTALLATION

7. Disconnect hose and rigid tubing connectors located between driver's section evaporator and refrigerant solenoid valve. Remove thermal expansion valve c/w hoses located upstream and downstream of expansion valve (refer to figure 2).

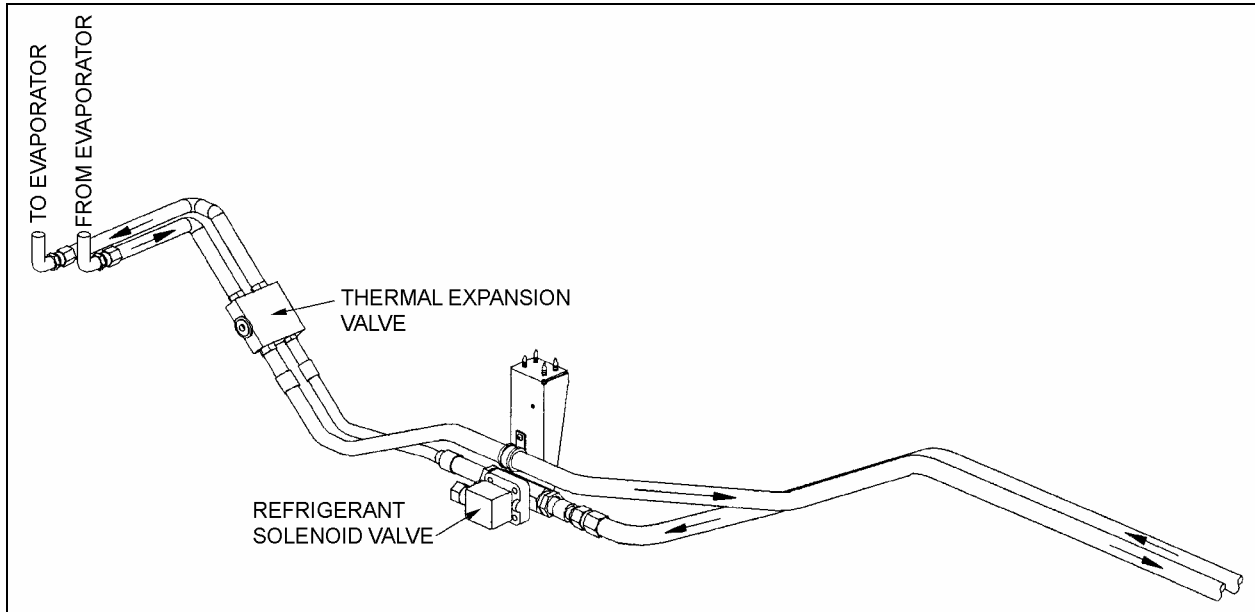


FIGURE 2: FORMER INSTALLATION – FRONT SECTION

INSTALLATION

1. Connect A/C pipe (871343) and also thermal expansion valve assembly c/w pipe (871344) to the evaporator connectors.
2. Install and connect hoses 454107 and 454109 as per figure 3.

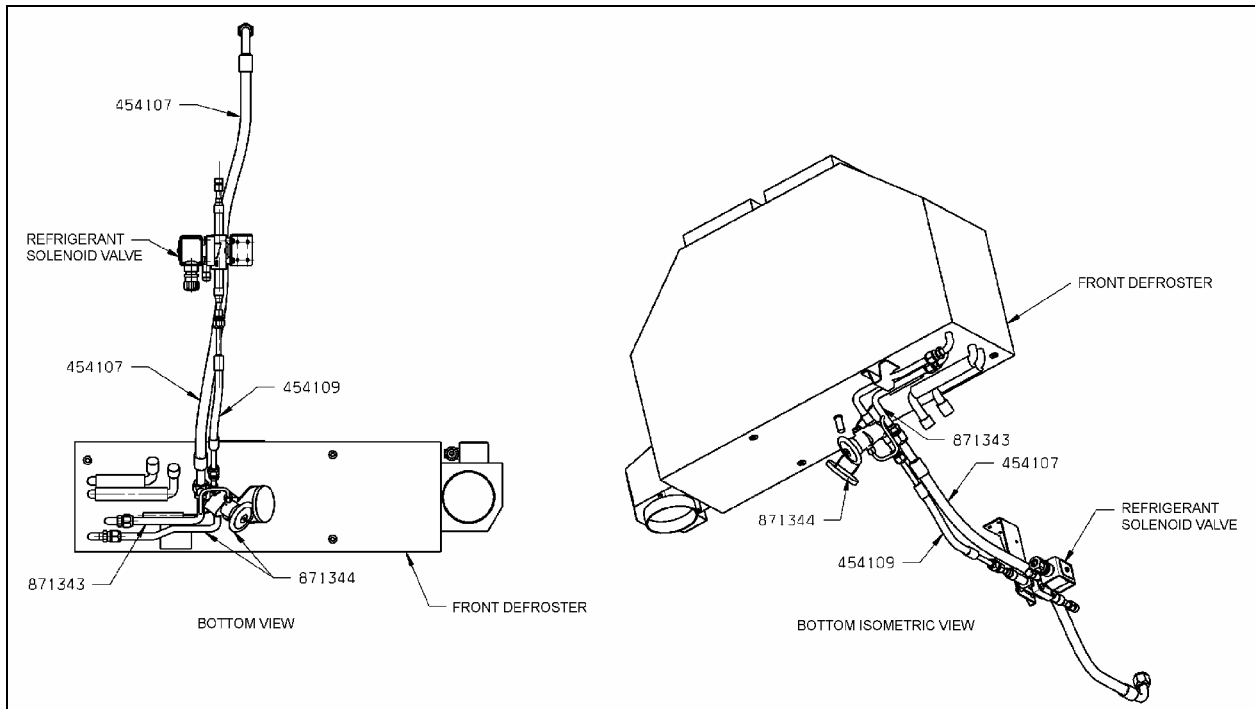


FIGURE 3: VIEW OF INSTALLATION – FRONT SECTION

3. The compressor being horizontal and the suction and discharge ports upwards, slowly rotate the compressor's magnetic clutch several times by hand to distribute the oil which has settled in the cylinders then install Seltec compressor (950372) in vehicle onto its support.
4. Align radiator fan gearbox pulley with compressor pulley.
5. Using the supplied cap (051992), close off the refrigerant hose hole in the radiator plastic sealing frame.
6. Assemble the new condenser (950381) with its supports (454229, 454230).
7. Route the hoses through the radiator plastic sealing frame, secure the condenser then install a retaining clamp for the fuel hoses.

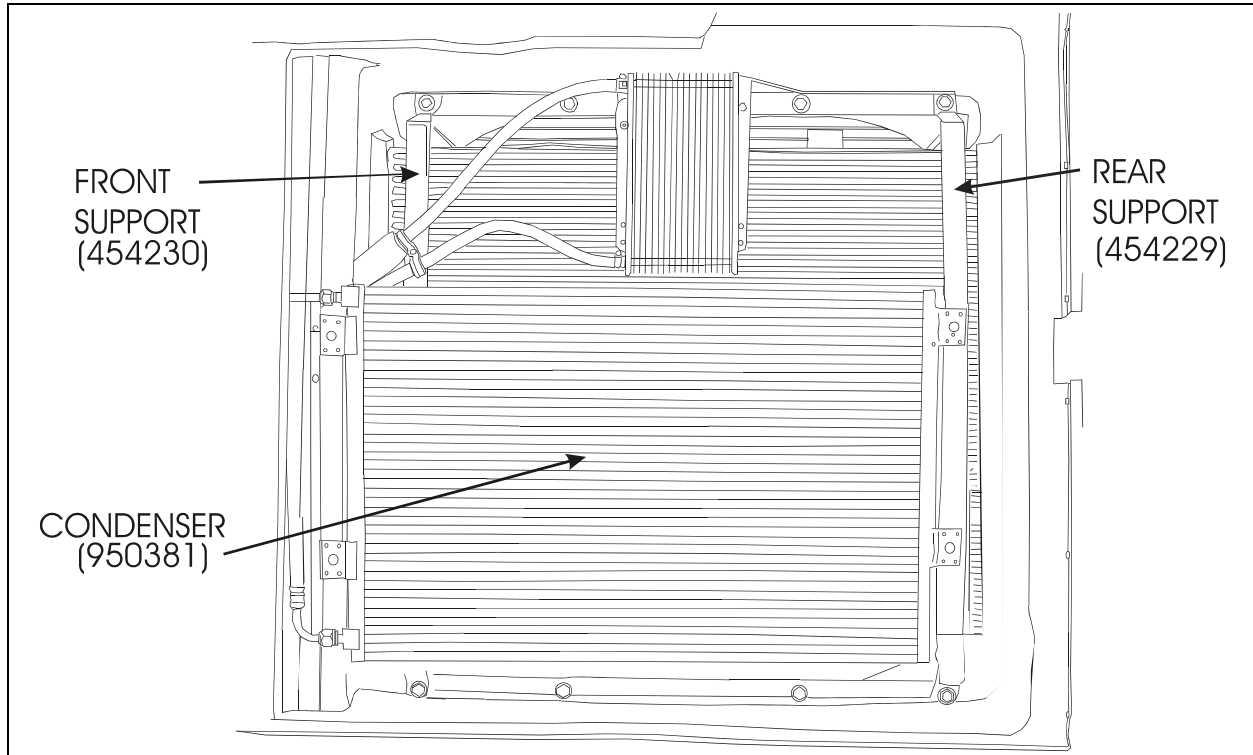


FIGURE 4: CONDENSER SUPPORTS

8. Position support (454072) of high pressure service valve assembly onto cross member located at ceiling of L.H. side rear service compartment then secure high pressure service valve assembly.
9. Install and connect low pressure hose (453898) between compressor and low pressure switch. Install and connect high pressure hose (453899) between compressor and high pressure service valve assembly (454066).
10. Install filter dryer (950370) and moisture indicator (453514) complete with O-ring onto filter support and secure filter using two hose clamps (504026).
11. Install and connect hose (453900) between condenser and high pressure service valve assembly. Install and connect hose (453901) between condenser and filter dryer.
12. Reconnect to the high pressure rigid tubing existing hose connector, the refrigerant moisture indicator assembly (453514).
13. Install and secure all hoses.

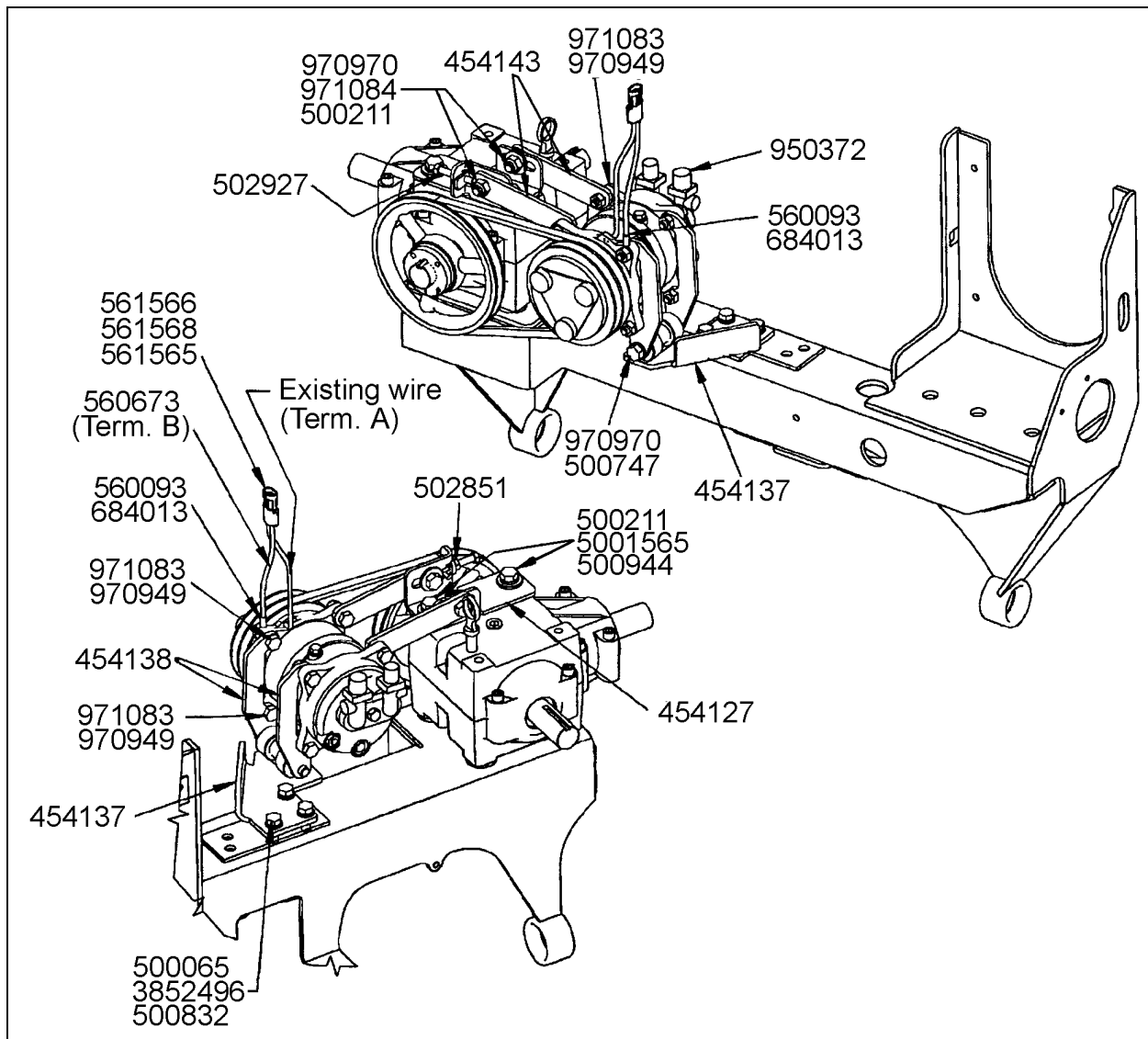


FIGURE 5 COMPRESSOR INSTALLATION

14. Install compressor electrical wires and connect to compressor mounting (Refer to figure 5).
15. Pressurize the system at 150 psi and check for leaks using soapy water.
16. Vacuum and charge the system with 5.5 lbs of 134a and 220 ml of PAG oil (Prévost #950382), at room temperature.

Caution: Use only PAG oil with this compressor. **DO NOT MIX PAG AND POE OR MINERAL OILS!**

17. Operate the system on high load for at least 20 minutes. The moisture sight glass should show $\frac{3}{4}$ to full.

Warning: Warranty will be void if you fill the compressor with POE or mineral oil.

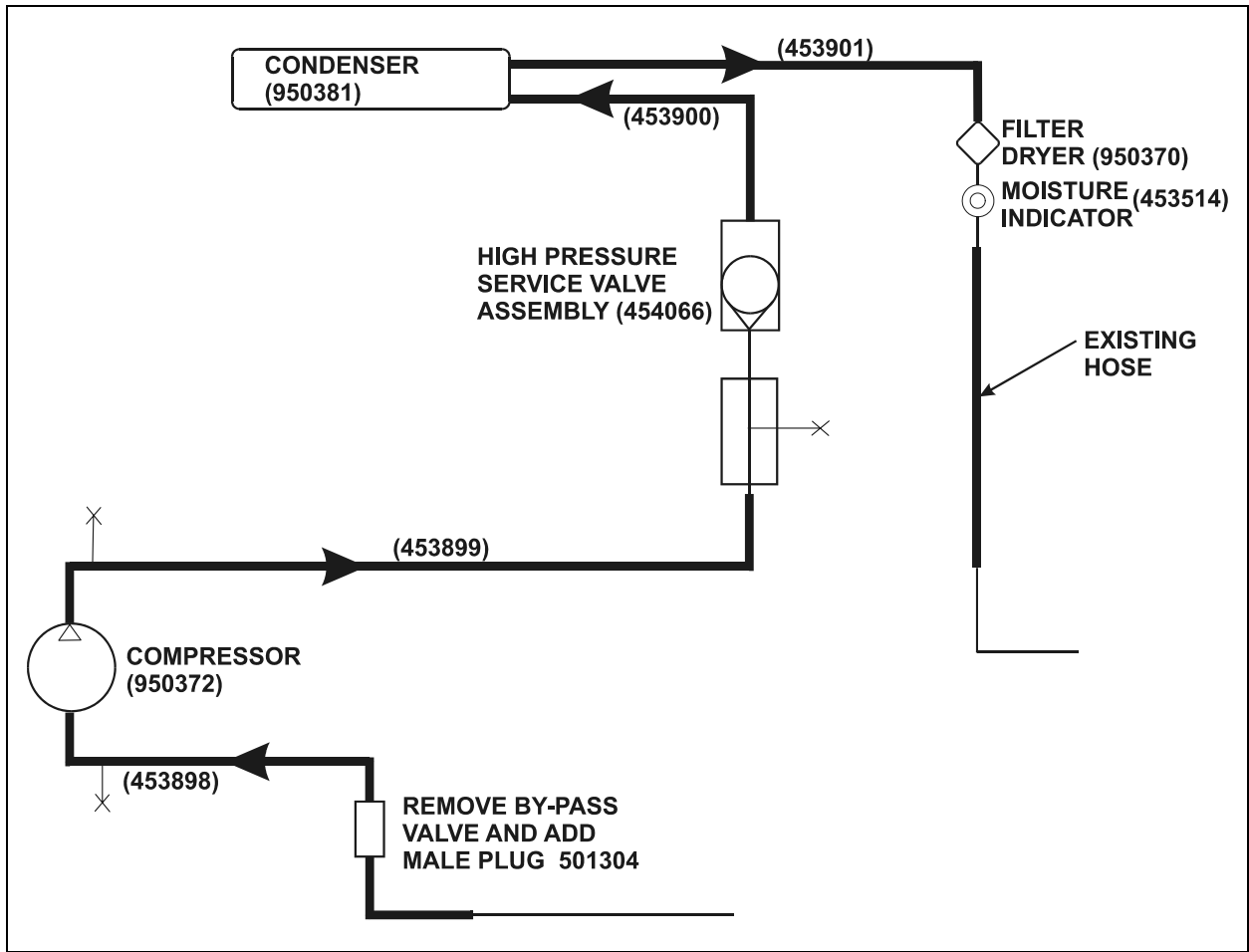


FIGURE 6: NEW INSTALLATION