

PREVOST

ENREGISTRÉ - REGISTERED
ISO 9001 & ISO 14001

MAINTENANCE INFORMATION Mi02-06



DATE :	May 2002	SECTION :	06 - Electrical
SUBJECT : INSTALLATION OF A WATERTIGHT BOX FOR THE COOLANT PRE-HEATING SYSTEM ELECTRICAL CONNECTIONS			

Important Notice: This modification is recommended by Prévost Car to increase your vehicle's performance. Note that no reimbursement will be awarded for carrying out this modification.

APPLICATION

Model	VIN
XL-40, XL-45 Coaches Model Year : 1994 - 2000	From 2P9L33409R <u>1001820</u> up to 2PCL33493Y <u>1027045</u> incl.
XLII-45 Coaches Model Year : 2000 - 2002	From 2PCX3349XY <u>1027089</u> up to 2PCX3349X <u>21027763</u> incl.
H3-41, H3-45 Coaches Model Year : 1994 - 2002	From 2P9H33495R <u>1001012</u> up to 2PCH33496 <u>21014416</u> incl.

DESCRIPTION

For protection purposes and in order to prevent corrosion of coolant pre-heating system electronic control unit and electrical connections, it is possible to install a watertight box near the coolant pre-heater. Just order at your own expense kit #065744, which includes all necessary parts to perform this modification. Note that this kit can be used with Espar 41,000 BTU, Webasto 45,000 and 80,000 BTU systems.

MATERIAL

Kit #065744 includes the following parts:

Part No	Description	Qty
065743	Box, Watertight	1
065745	Extension, Cable	1
065746	Support, Watertight box	2
500179	Bolt, 5/16 in x ¾ in SS	4
502600	Nut, Lock Nylon Insert 5/16 in-18	4

500524	Screw, Pan Head Phillips SS 12 x 5/8 in	4
504637	Tie, Locking	6
506318	Velcro, Fastener	1
680025	Paste, Sealant	1

Note: Material can be obtained through regular channels.

PROCEDURE

Warning: Park vehicle safely, apply parking brake, stop engine and set battery master switch(es) to the OFF position prior to working on the vehicle.

1. Before starting with this modification on the coolant pre-heating system, remove relevant fuse(s) or trip breaker(s).
2. Disconnect wires from electronic control unit. Remove electronic control unit from coolant pre-heater by bending retaining clamps.
3. Remove retaining clamps support and install onto watertight box bottom plate.

Note: In order to fix retaining clamps support, you can either use screws or glue. Before gluing support, you must thoroughly clean it using a degreaser then isopropyl alcohol, allow to dry then glue using two strips of Velcro (12 inch cut in 4 parts: 4-3 inch-strips).

4. In order to replace corroded wires: Cut one wire at a time, insert heat shrink tubing before crimping cut wire. Identify number inscribed onto wire then crimp butt splice with matching wire number and color. Make sure to seal all connections by applying several turns of electrical tape (refer to figure 2).

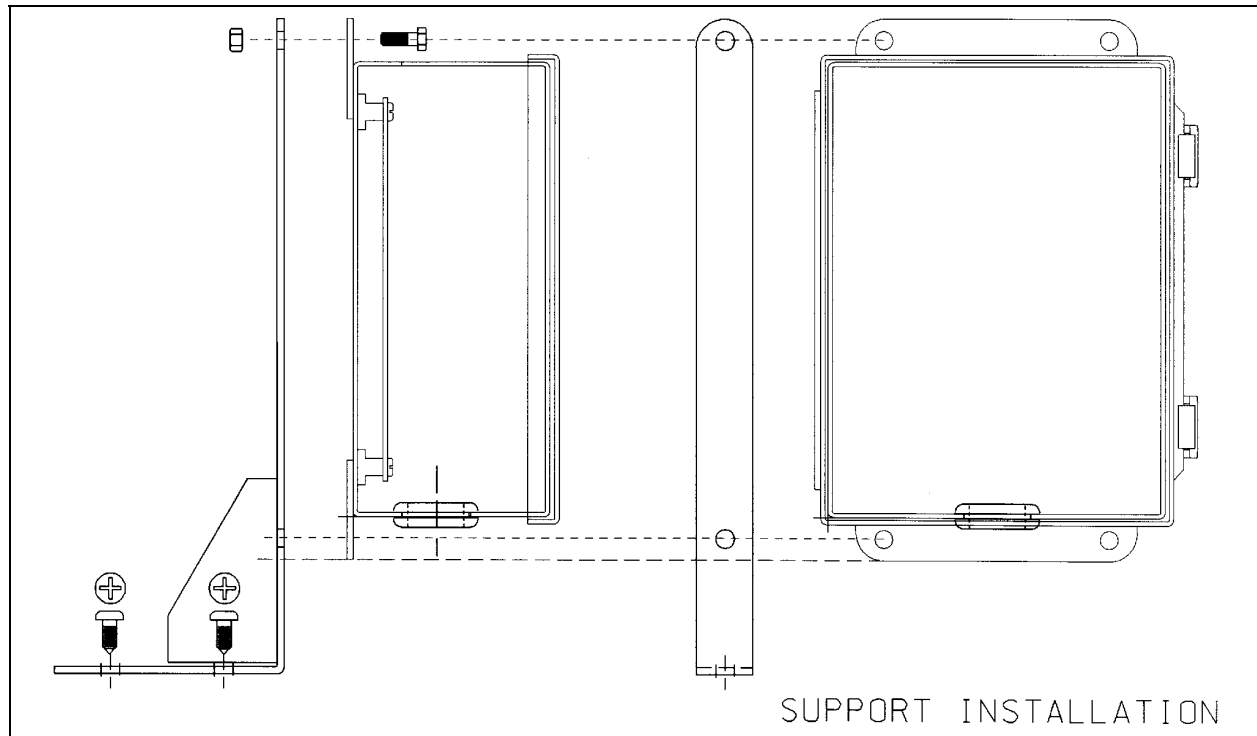


FIGURE 1

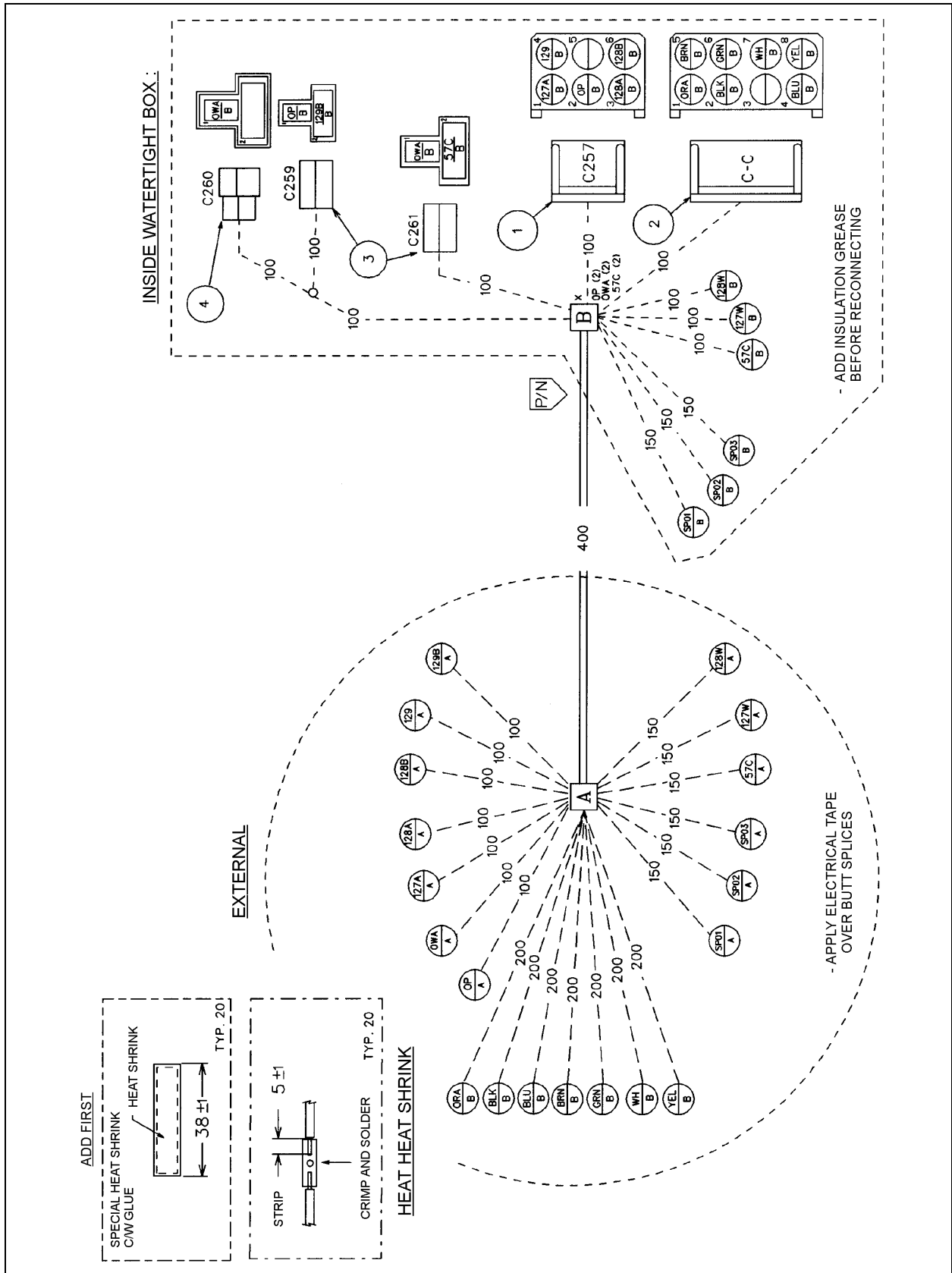


FIGURE 2

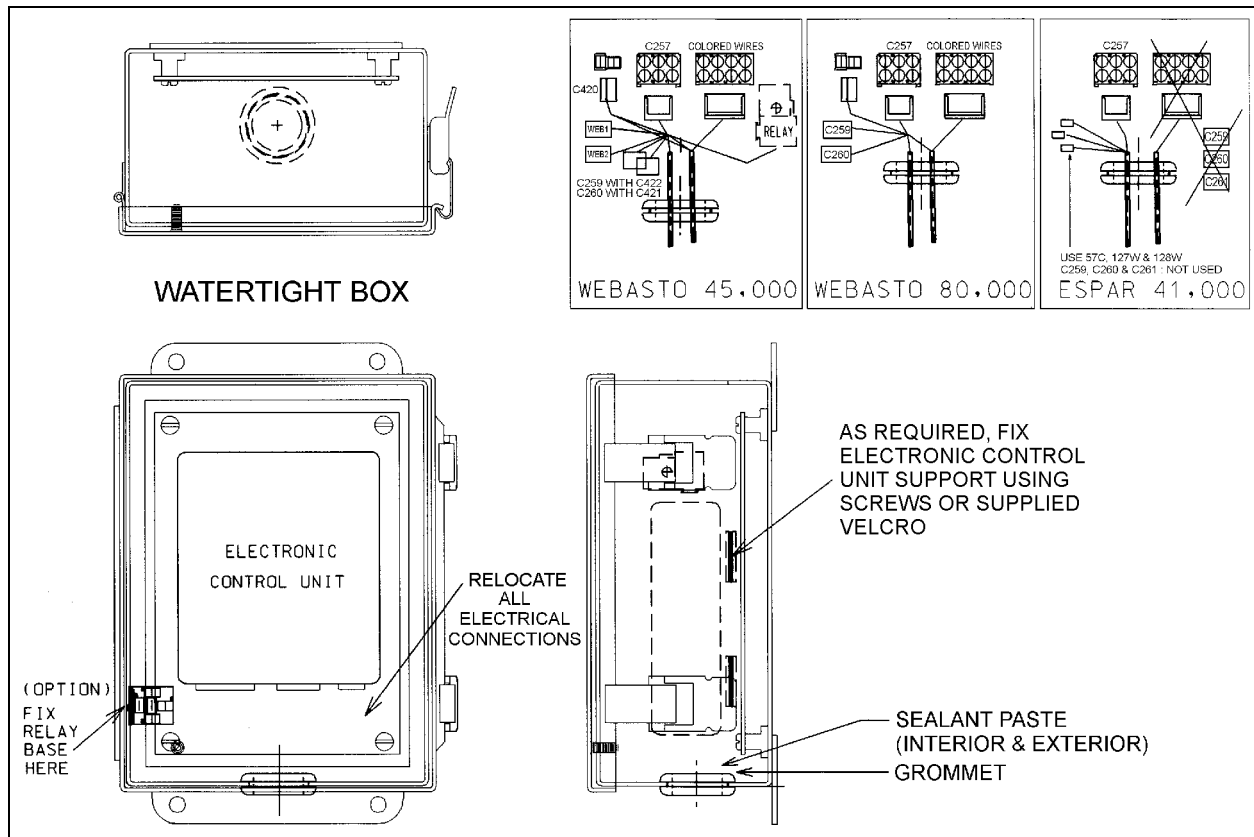


FIGURE 3

Note: Refer to vehicle electrical diagram to correctly perform pre-heating system electrical connections.

5. Feed all wires and connectors through watertight box 1/4 inch hole, temporarily remove grommet if necessary.
6. Secure relay (if required) to the box side (refer to figure 3). Make sure there is sufficient "Nyogel" insulation grease onto each terminal before making final connection.
7. Completely seal hole around wires using sealant paste (680025). Apply paste on the box interior and exterior side and ensure box is completely sealed from humidity or contaminants.
8. Fasten support onto box using bolts (500179) and nuts (502600) (refer to figure 1).
9. Locate the best location for the watertight box then mark the 4 holes with a felt tip marker. Drill four 1/8 inch diameter holes and secure box using 4 supplied screws (500524).

Caution: Do not use longer screws to prevent piercing muffler.

10. Before verifying the whole pre-heating system, you must reset breaker(s) or reinstall fuse(s).

Waste disposal:

Discard according to applicable environmental regulations (Municipal/State[Prov.]/ Federal)