

PREVOST

ENREGISTRÉ - REGISTERED
ISO 9001 & ISO 14001

**MAINTENANCE
INFORMATION**


Mi03-13



DATE :	September 2003	SECTION :	16 - Suspension
SUBJECT :	ADDITION OF WASHERS TO SWAY BAR RUBBER BUSHING COLLARS		

Important Notice: This modification is recommended by Prévost Car to increase your vehicle's performance. Note that no reimbursement will be awarded for carrying out this modification.

APPLICATION

Model	VIN	
H3-41, H3-45 Coaches Model Year: 1994 - 2003	From 2P9H33495R <u>1001012</u> up to 2PCH3349X <u>31014744</u> incl.	
VIP-45 Model Year: 1995 - 2003	From 2P9V33494S <u>1001057</u> up to 2PCV33494 <u>31014743</u> incl.	
XL2-45 Coaches Model Year: 2000 - 2004	From 2PCX33495Y <u>1026951</u> up to 2PCX334934 <u>1028157</u> incl.	
MTH XL2 W0, W5 & WE Model Year: 2000 - 2003	From 2PCW33496Y <u>1026856</u> up to 2PCW33499 <u>31028156</u> incl.	

DESCRIPTION

On the above-mentioned vehicles, it is necessary to inspect the front and rear sway bar rubber bushing collars to check for proper location of nuts and at the same time adding washers to improve the bearing surface.

MATERIAL

Part No	Description	Qty
955897	Washer, Flat ZP 13 X 24 X 2	A/R

Note: Material can be obtained through regular channels.

PROCEDURE

Warning: Park vehicle safely, apply parking brake, stop engine and set battery master switch(es) to the OFF position prior to working on the vehicle.

H3 SERIES VEHICLES

1. Raise vehicle by the jacking points on frame (refer to figure 1).

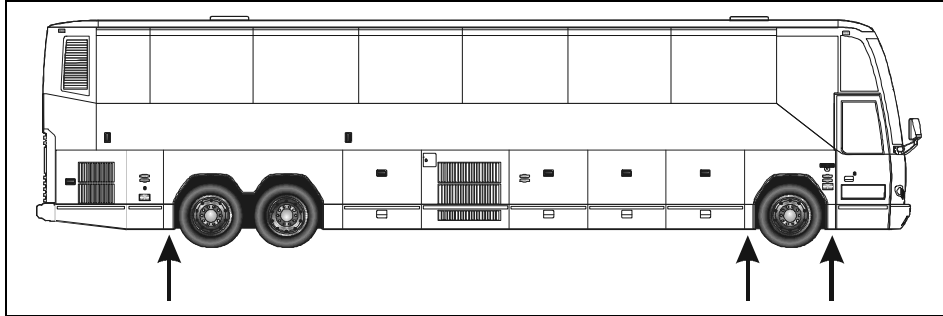


FIGURE 1: JACKING POINTS ON FRAME

Warning: The suspension of the vehicle must be in the normal ride position before jacking.

2. Unscrew bolt then install a washer (955897) underneath each front or rear sway bar collar bolt referring to figures 2, 3 and 4 for parts location.

Note: Install washers on collar side only.

Caution: Do not unscrew all bolts before installing washers, install one washer at a time then retighten nut.

Note: Tightening torque (80 Pi-Lbs) must always be applied to the nut.

Note: The nuts securing the rubber bushing collars must be installed on the collar side (oval hole) in the case of independent front suspension sway bar and I-beam front axle sway bar (refer to figures 2 and 4).

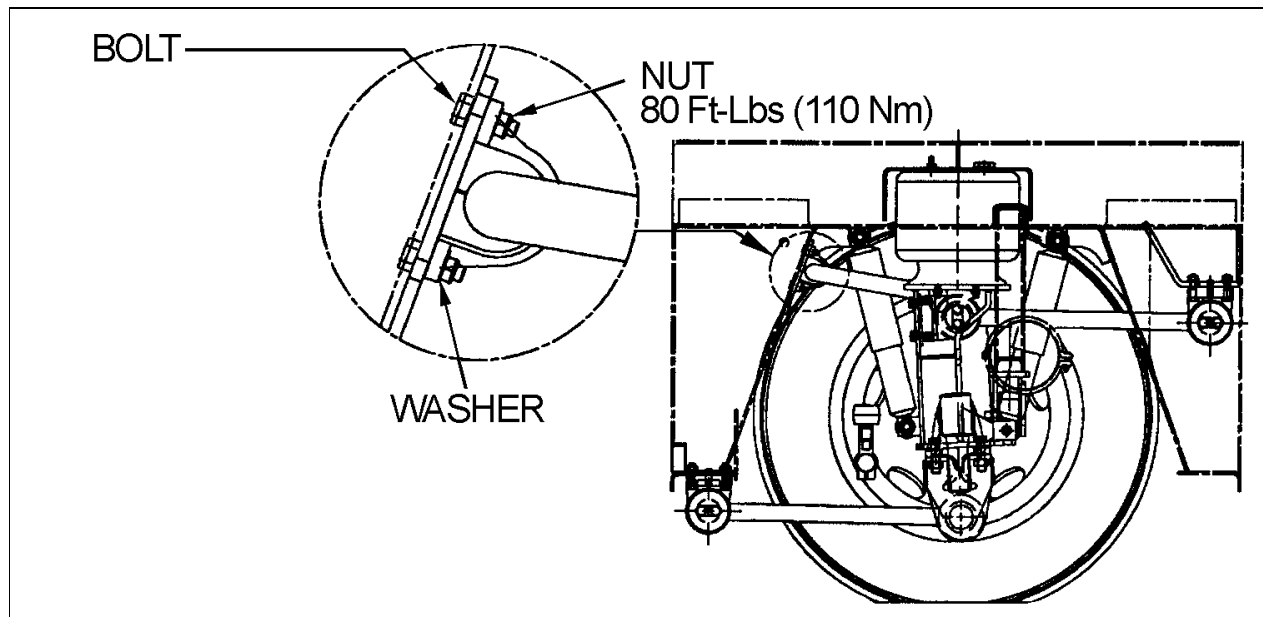


FIGURE 2: H3 COACHES EQUIPPED WITH I-BEAM FRONT AXLE

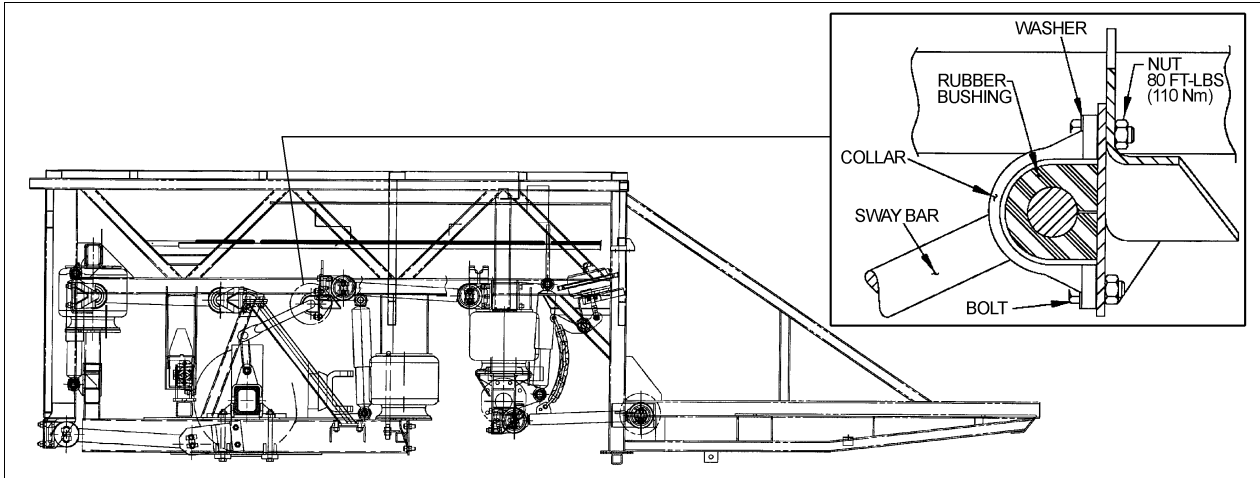


FIGURE 3: REAR AXLES

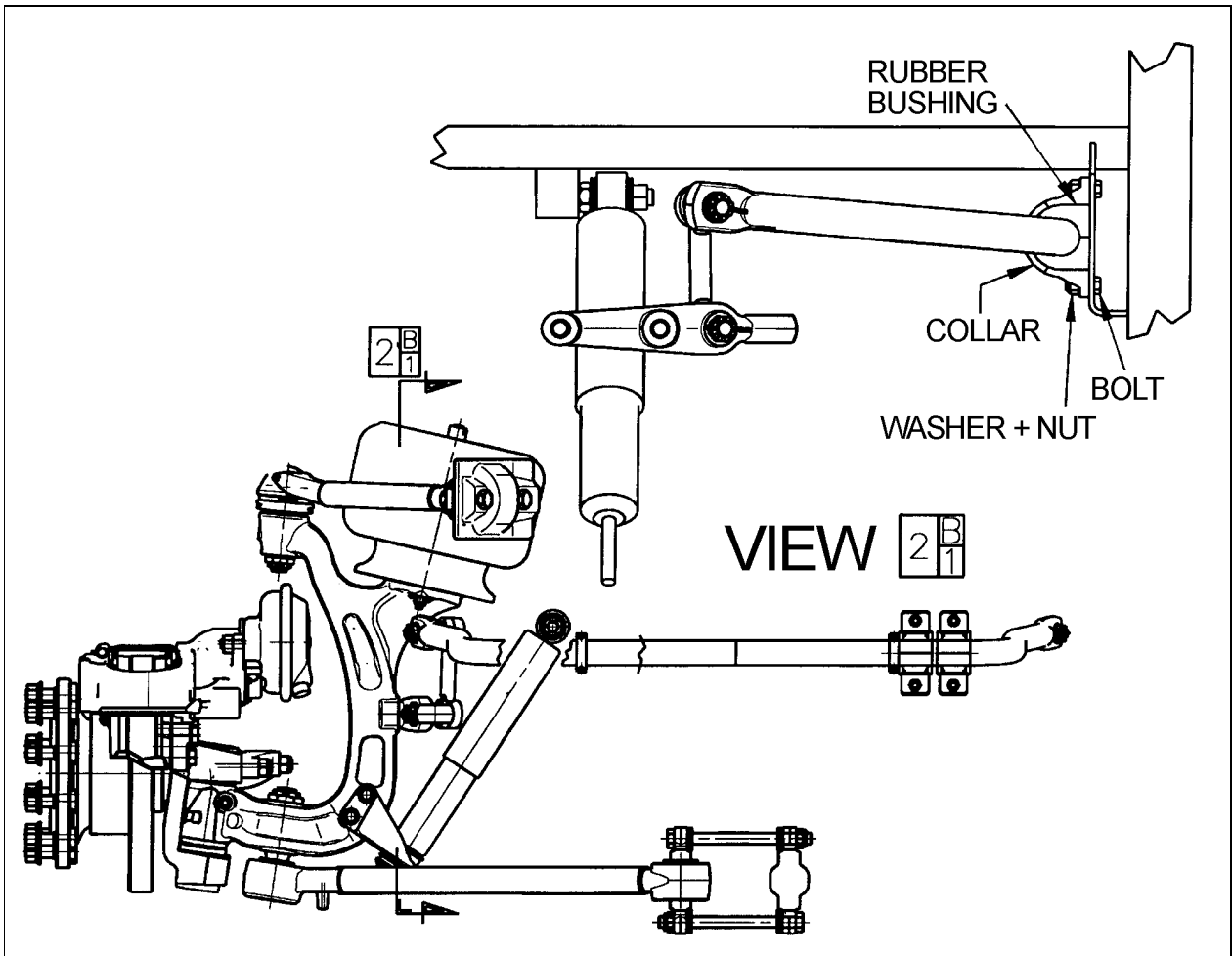


FIGURE 4: VIP OR XL2 SERIES VEHICLES EQUIPPED WITH INDEPENDENT SUSPENSION

XL2 SERIES VEHICLES

1. Raise vehicle by the jacking points on frame (refer to figure 5).

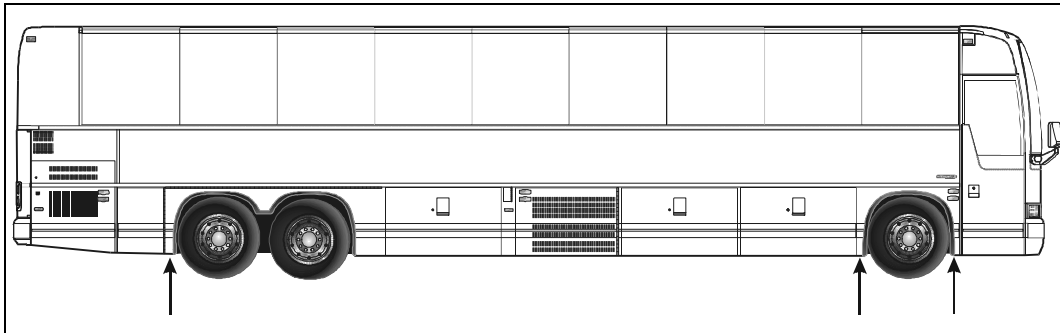


FIGURE 5: JACKING POINTS ON FRAME

Warning: The suspension of the vehicle must be in the normal ride position before jacking.

2. Unscrew bolt then install a washer (955897) underneath each front or rear sway bar collar bolt referring to figures 4, 6 and 7 for parts location.

Note: Install washers on collar side only.

Caution: Do not unscrew all bolts before installing washers, install one washer at a time then retighten nut.

Note: Tightening torque (80 Pi-Lbs) must always be applied to the nut.

Note: The nuts securing the rubber bushing collars must be installed on the collar side (oval hole) in the case of independent front suspension sway bar and I-beam front axle sway bar (refer to figures 4 and 6).

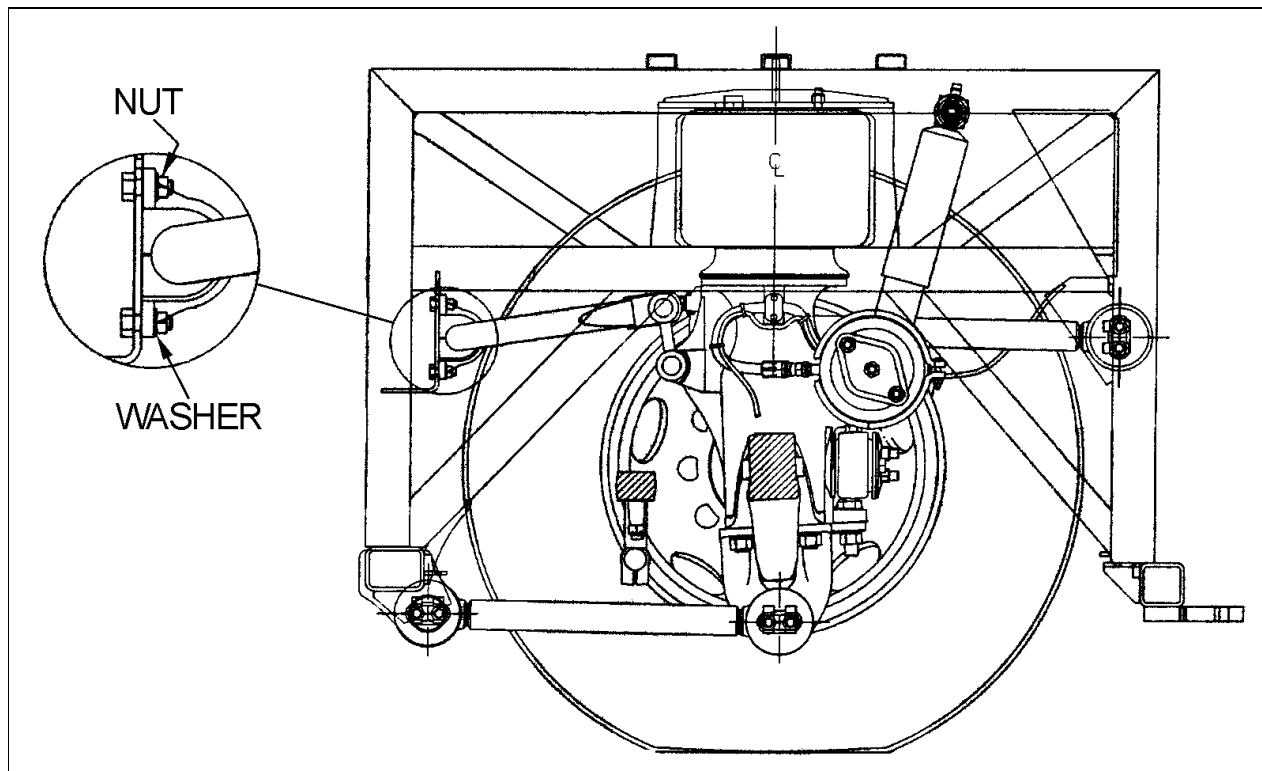


FIGURE 6: XL2 COACHES EQUIPPED WITH I-BEAM FRONT AXLE

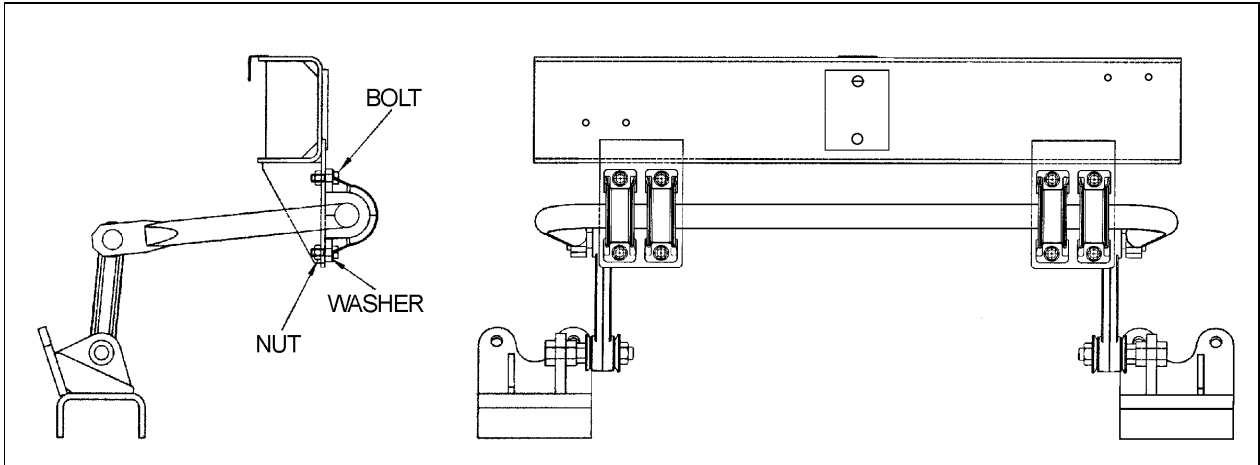


FIGURE 7: REAR AXLES (MTH ONLY)

Waste disposal:

Discard according to applicable environmental regulations (Municipal/State[Prov.]/ Federal)