

PREVOST

EN REGISTRÉ - REGISTERED
ISO 9001 & ISO




**WARRANTY
 BULLETIN**

Wb03-23

DATE : NOVEMBER 2003	SECTION :	18 - Body
EXPIRATION: NOVEMBER 2005		
SUBJECT: VERIFICATION OF RADIATOR DOOR AND ENGINE COMPARTMENT CURB-SIDE DOOR LATCH MECHANISM		

APPLICATION

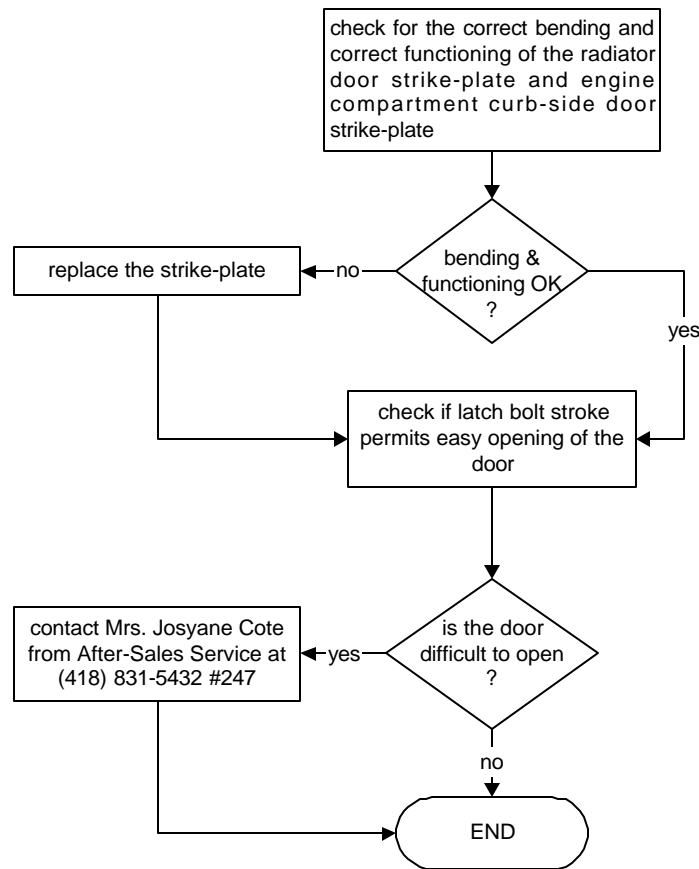
Model	VIN	
XLII-45 Coach Model Year : 2004	<u>2PCX3349341028112</u>	<u>2PCX3349041028181</u>
	<u>2PCX3349441028135</u>	<u>2PCX3349141028206</u>
	<u>2PCX3349841028171</u>	
XLII Motorhome XLII Entertainer Model Year : 2004	<u>2PCW3349841027937</u>	<u>2PCW3349841028179</u>
	<u>2PCY3349541027953</u>	<u>2PCY3349041028184</u>
	<u>2PCY3349741028019</u>	<u>2PCW3349341028185</u>
	<u>2PCW3349841028084</u>	<u>2PCW3349541028186</u>
	<u>2PCY3349741028165</u>	<u>2PCY3349641028187</u>
	<u>2PCW3349X41028166</u>	<u>2PCW3349941028188</u>
	<u>2PCW3349141028167</u>	<u>2PCW3349041028189</u>
	<u>2PCW3349341028168</u>	<u>2PCW3349741028190</u>
	<u>2PCW3340341028169</u>	<u>2PCW3349941028191</u>
	<u>2PCW3349141028170</u>	<u>2PCY3349X41028192</u>
	<u>2PCW3340341028172</u>	<u>2PCW3349241028193</u>
	<u>2PCW3349741028173</u>	<u>2PCW3349141028203</u>
	<u>2PCW3349041028175</u>	<u>2PCW3349341028204</u>
<u>2PCW3349441028177</u>	<u>2PCW3349541028205</u>	

DESCRIPTION

On the above mentioned vehicles, there is a risk that the radiator door opens while the vehicle is traveling. This is due to a wrong bending of the strike-plate. It is necessary to check the strike-plate bending and if needed, to replace it.

PROCEDURE

Warning : Park vehicle safely, apply parking brake, stop engine and set battery master switch(es) to the OFF position prior to working on the vehicle.



Strike-plate verification

1. Open the radiator. Check for the proper bending of the strike-plate (figure 2). The angle must be at $90^{\circ} \pm 1^{\circ}$. If the angle is different from that specification, replace the strike-plate. Do the same verification for the engine compartment curb-side door.

Note: Check that the door latch retains the door closed securely. Pull the door to open it without actuating the latch lever. If the door opens, the strike-plate has to be replaced.

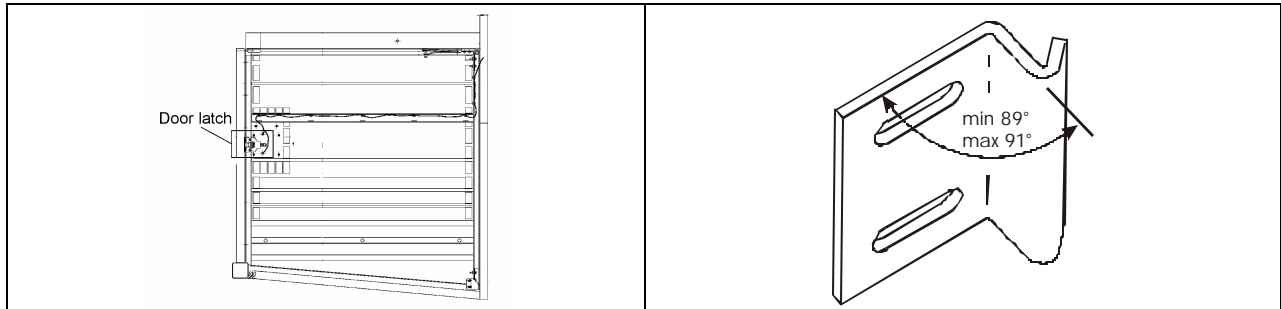


FIGURE 1: RADIATOR DOOR, INSIDE VIEW

FIGURE 2: STRIKE-PLATE

Order the following part:

Part No.	Description	Qty
287286	Strike-plate	1 or 2 as required

Latch bolt stroke verification

2. With the radiator door closed, actuate the door latch lever to open it. Check if there is friction or obstruction between the latch bolt and the strike plate. If the door is difficult to open, it is necessary to replace the latch mechanism by a new one that allows a longer latch bolt stroke. To do so, contact Mrs. Josyane Cote from the after-sales service at (418) 831-5432#247.

Note : To maintain the door closed securely, the latch bolt must engage 0.394" (10mm) behind the strike-plate. The latch bolt must clear completely the strike-plate to permit easy opening of the door.

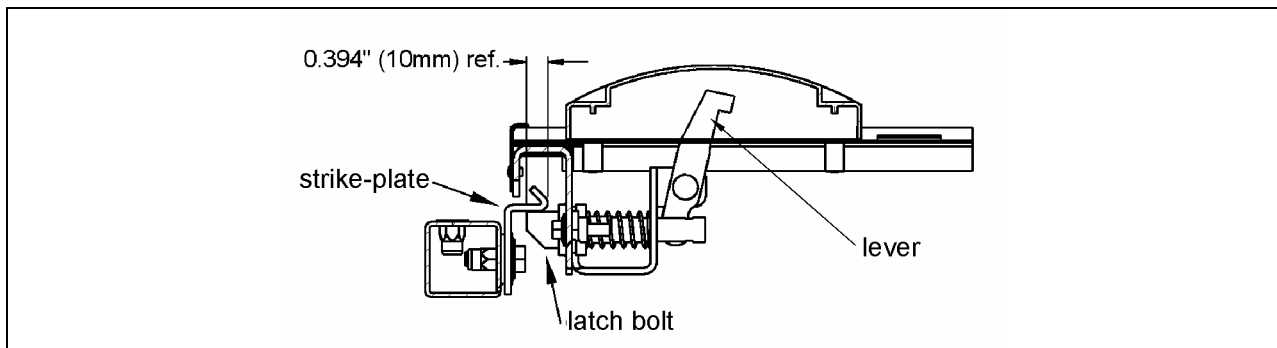


FIGURE 3: LATCH BOLT STROKE VERIFICATION. IDENTIFICATION OF COMPONENTS

WARRANTY

This modification is covered by Prévost Car's normal warranty. We will reimburse you 1/4 hour (0.25) of labor for the verification and we will reimburse you the parts and 1/4 hour (0.25) of additional labor for the parts replacement upon receipt of a completed A.F.A. form on which you must specify as per "Warranty Bulletin 03-23".

Parts / Waste disposal:

Discard waste according to applicable environmental regulations (Municipal/State[Prov.]/ Federal)