


# PREVOST

## WARRANTY BULLETIN

**WB15-46**

DATE :	OCTOBER 2015	SECTION :	18 - BODY
EXPIRATION:	OCTOBER 2017		
SUBJECT :	EPA Emission Control Decal Replacement		

### APPLICATION

<b>NOTICE TO SERVICE CENTERS</b> <i>Verify vehicle eligibility by checking warranty bulletin status with <b>SAP</b> or via <b>ONLINE WARRANTY SYSTEM</b> available on Service / Warranty tab of Prevost website.</i>	
Model	VIN
	
H3-45 Coaches Model Year : 2015	2PCH33490 <u>FC712806</u> , 2PCH33499 <u>FC712836</u> , 2PCH33495 <u>FC712851</u> , 2PCH33490 <u>FC712868</u> , 2PCH33499 <u>FC712870</u> , 2PCH33494 <u>FC712873</u> , 2PCH33496 <u>FC712874</u> , 2PCH33491 <u>FC712877</u> , 2PCH33493 <u>FC712878</u>
H3-45 VIP motorhome Model Year : 2015	2PCVS3494 <u>FC712832</u>
X3-45 coaches Model Year : 2015	2PCG33499 <u>FC735819</u>
X3-45 VIP commercial use Model Year : 2015	2PCC33496 <u>FC735811</u>
X3-45 Commuter Model Year : 2015	4RKG33495 <u>F9737000</u> and 4RKG33497 <u>F9737001</u>
This bulletin does not necessarily apply to all the above-mentioned vehicles, some vehicles may have been modified before delivery. The owners of the vehicles affected by this bulletin will be advised by a letter indicating the Vehicle Identification Number (VIN) of each vehicle concerned.	

### DESCRIPTION

On the vehicles affected by this bulletin the EPA (US Environment Protection Agency) decal located in the engine compartment displays incorrect information related to the vehicle emission control.

Specifically, the first character, indicating the model year in the vehicle family identification number is incorrect and the California state EPA compliance notice is missing.

## CORRECTIVE MESURES

To ensure conformity with EPA regulations, the decal must be replaced by a *certified Prevost technician*. Contact your nearest Prevost Service Center to schedule an appointment and have this modification performed at your earliest convenience. Have in hand your vehicle identification number (VIN) and the warranty bulletin number WB15-46.

Since decals are vehicle specifics, allow a few days for the order to reach your local Service Center. A complete list of all Prevost Service Centers is available on <https://www.prevostcar.com/service-network>

## MATERIAL

Prevost Service Center will order the following part (VIN Specific):

Part No.	Description	Qty
011229P	Vehicle Specific EPA Decal	1

### NOTE

*Material cannot be obtained through regular channels and can be ordered by Prevost personnel only. Contact Sylvie Bélanger (Prevost Parts Ste-Foy) at [sylvie.belanger@volvo.com](mailto:sylvie.belanger@volvo.com) to order the correct vehicle decal.*

*Email must include:*

*- Vehicle VIN*

*-Service Center and/or contact person name and address to ship the order.*

## PROCEDURE (SERVICE CENTER INFO)



### DANGER

Park vehicle safely, apply parking brake, stop engine. Prior to working on the vehicle, set the ignition switch to the OFF position and trip the main circuit breakers equipped with a trip button. On the Commuter type vehicles, set the battery master switch (master cut-out) to the OFF position.

1. Validate that the new EPA decal information is correct:
  - Vehicle family Identification number first digit must be "F" (see Fig.1).
  - Regulation compliance must include California (see Fig.1).
  - Vehicle VIN must match VIN on the new decal (see Fig 2).
2. Remove the vehicle EPA decal located in the engine compartment (see Fig.3). Do not install the new decal over the old one.
3. Carefully clean the decal area from all traces of dirt, road grime and old adhesive.
4. Reinstall the new decal at the same location on the vehicle, make sure of proper adhesion.

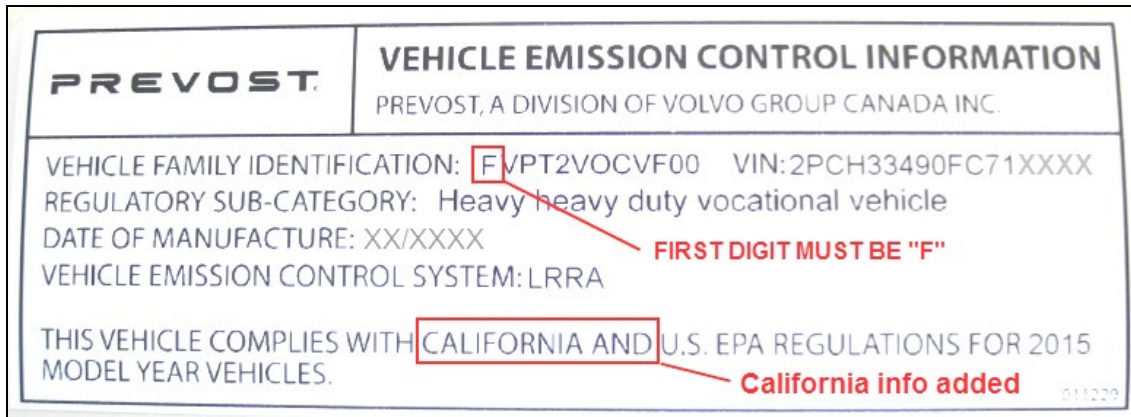


FIG.1 CORRECT INFORMATION ON NEW EPA DECAL – CANADIAN BUILT VEHICLE SHOWN

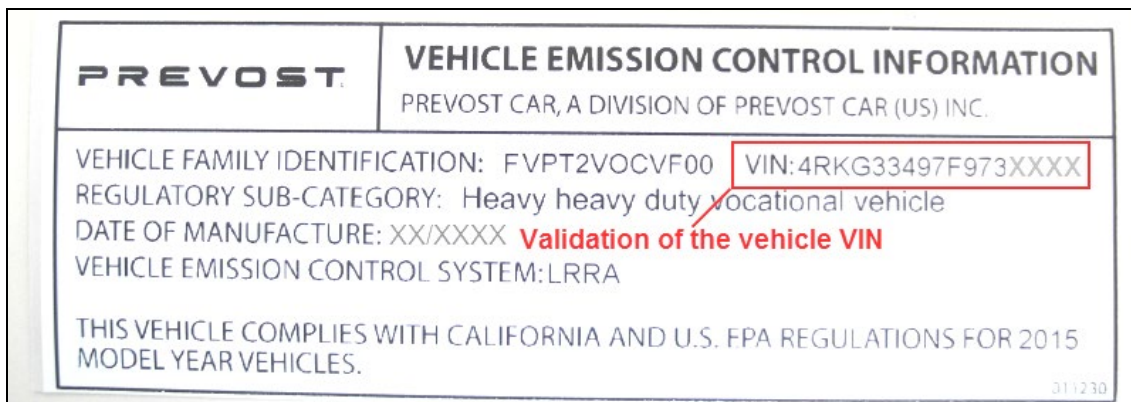


FIG.2 VALIDATE VEHICLE VIN BEFORE FINAL INSTALLATION - US BUILD VEHICLE SHOWN

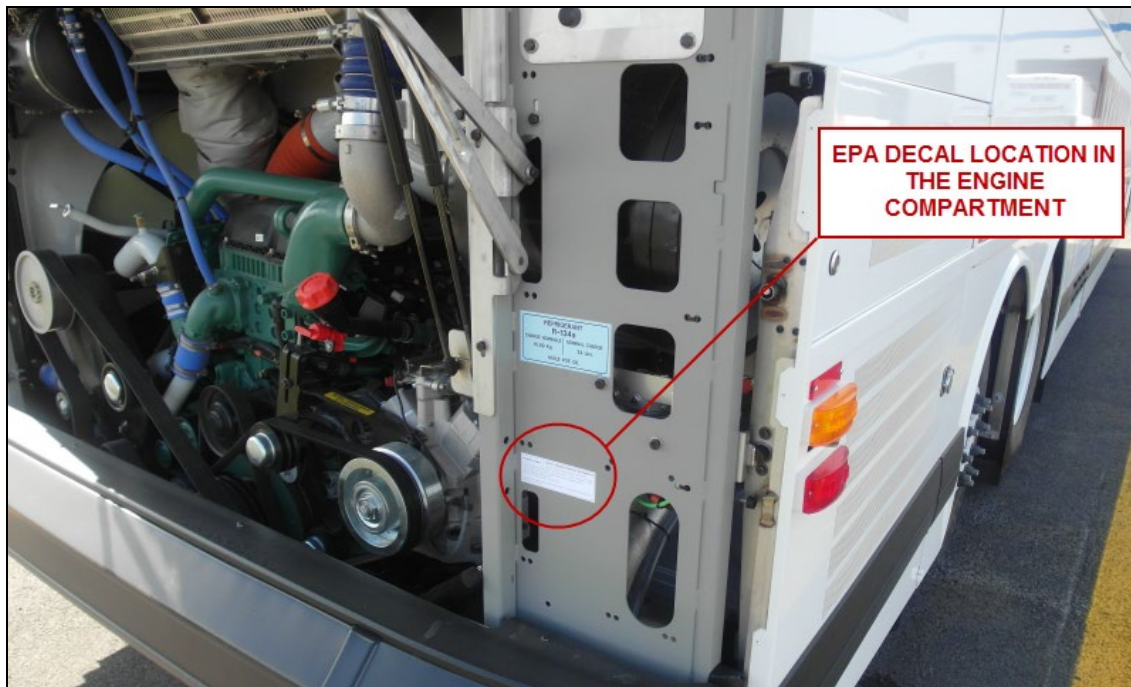


FIG.3 EPA DECAL LOCATION ON THE VEHICLE

## PARTS / WASTE DISPOSAL

DO NOT RETURN THE REPLACED PARTS. Discard waste according to applicable environmental regulations (Municipal/State[Prov.]/ Federal)

## WARRANTY

This modification is covered by Prevest's normal warranty and must be performed through a Prevest Service Center or by authorized Prevest personnel. Time to replace the decal is half an hour (0.5) of labor select "Warranty Bulletin WB15-46".

## OTHER

VBC Bulletin	N/A
Fail Code	18.02
Defect Code	09
Syst. Cond	B
Causal Part	012820

Access all our Service Bulletins on  
<https://secureus5.volvo.com/technicalpublications/en/pub.asp>  
or scan the QR-Code with your smart phone.  
E-mail us at **technicalpublications\_prev@volvo.com** and type  
"ADD" in the subject to receive our warranty bulletins by e-mail.

