

# Conversion Kit

# CK19-16

|         |            |          |       |
|---------|------------|----------|-------|
| Date    | Expiration | Revision | Page  |
| 06.2019 | N/A        | 0        | 1(17) |

First Release

06-03-2019

## ISRI SEAT BELT WITH SENSOR INSTALLATION (ACCESSORY KIT 23687694)

Prevost / Volvo Vehicles

### DESCRIPTION

On the vehicles affected by this bulletin, a new seat belt buckle with warning sensor (telltale/buzzer) must be installed on the driver's seat following the instruction below. Accessory Kit # 23687694 must be run to activate the system at the end of the procedure.

### MODEL YEAR(S) AND VEHICLES INVOLVED

| Model                                     | VIN   |
|---|---|
| H3-45 coaches<br>Model Year : 2017 - 2019 | 2PCH33490HC713599, 2PCH33493HC713600, 2PCH33497HC713602, 2PCH33490HC713604, 2PCH33494HC713606, 2PCH33498HC713608, 2PCH3349XHC713626, 2PCH33493HC713628, 2PCH33495HC713629, 2PCH33497HC713826, 2PCH33497HC713843, 2PCH33490HC713859, 2PCH33496HC713865, 2PCH33494JC713899, 2PCH33496JC713905, 2PCH33497JC713928, 2PCH33499JC713932, 2PCH33494JC713952, 2PCH33492JC713965, 2PCH33495JC713992, 2PCH33491JC710006, 2PCH33490JC710031, 2PCH33494JC710078, 2PCH33491KC710282, 2PCH33490KC710290, 2PCH33495KC710320, 2PCH33490KC710323, 2PCH33495KC710348, 2PCH33498KC710375, 2PCH33498KC710389, 2PCH33490KC710399, 2PCH33492KC710419, 2PCH33491KC710430, 2PCH33492KC710467, 2PCH33497KC710478 |

### MATERIAL NEEDED

Order the following parts:

| Part No. | Description                          | Qty |
|----------|--------------------------------------|-----|
| 860332   | SEAT BELT ASS W/SENSOR               | 1   |
| 562548   | TERMINAL, MOLEX .093 SOCKET 20-14AWG | 2   |
| 562549   | CONNECTOR, MOLEX .093 2 SH           | 1   |

Equipment that may be required:

| Part No. | Description  | Qty |
|----------|--|-----|
|          | Laptop with PTT (Premium TechTool, latest version installed) & related cables. | 1   |

### NOTE

Material can be obtained through regular channels.

## PROCEDURE



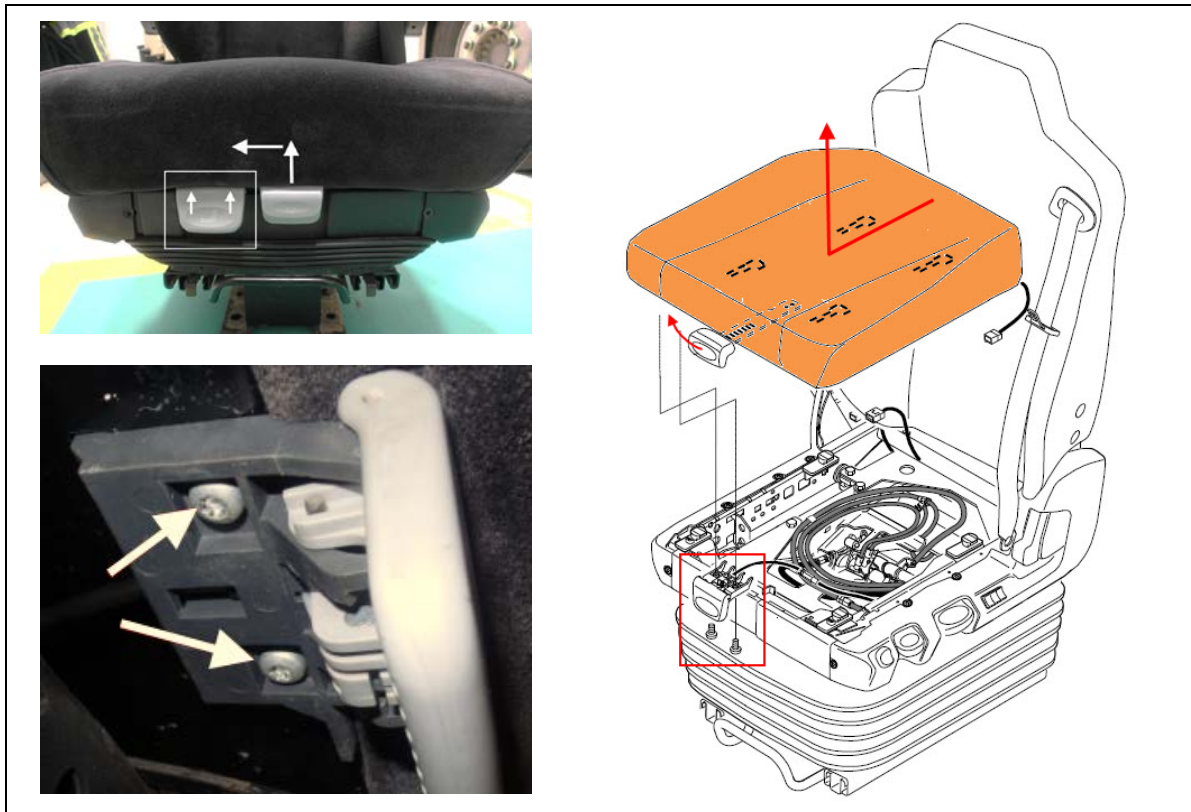
### DANGER

Park vehicle safely, apply parking brake, stop engine. Prior to working on the vehicle, set the ignition switch to the OFF position and trip the main circuit breakers equipped with a trip button. On Commuter type vehicles, set the battery master switch (master cut-out) to the OFF position.

Lock out & Tag out (LOTO) must be performed during set-up, maintenance or repair activities. Refer to your local procedure for detailed information regarding the control of hazardous energy.

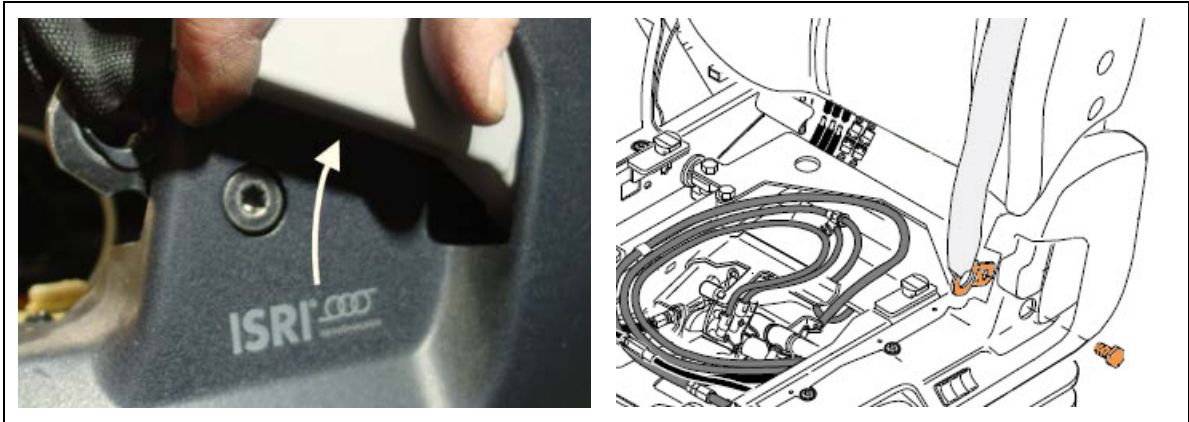
#### 1. Remove seat base (cushion) from the seat.

- Lift-up center lever and slide seat base (cushion) to the *foremost position*.
- Remove handle from seat base (remove two mounting screws).
- Hold center lever in upper position and push it sideward (left) to disengage it.
- Make sure the seat base is at its *full forward position* and lift it up to free it from the seat.



## 2. Remove seat belt from the seat.

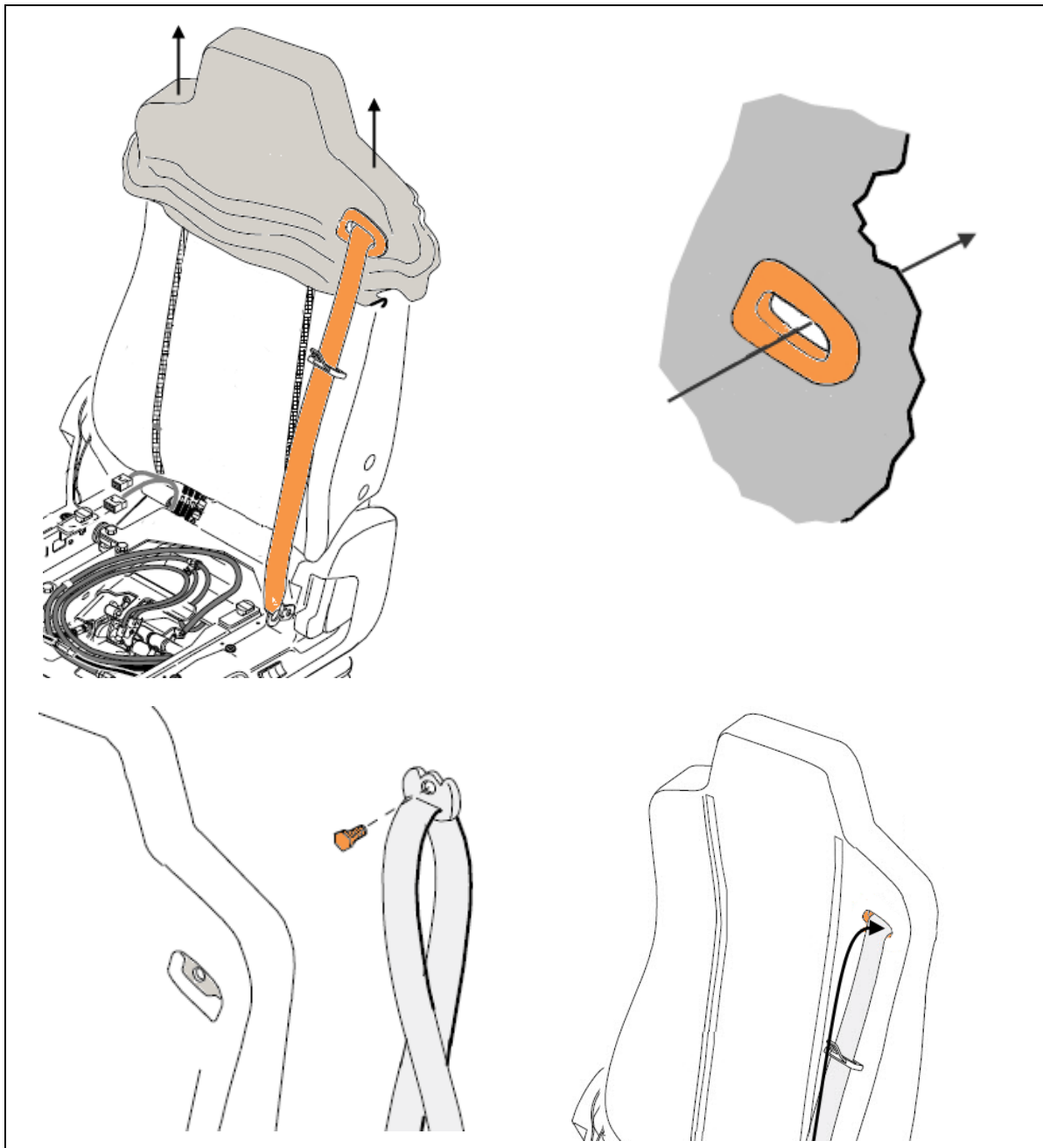
- Unscrew the belt lower mount Torx screw (lift the backrest adjustment lever to uncover the screw).



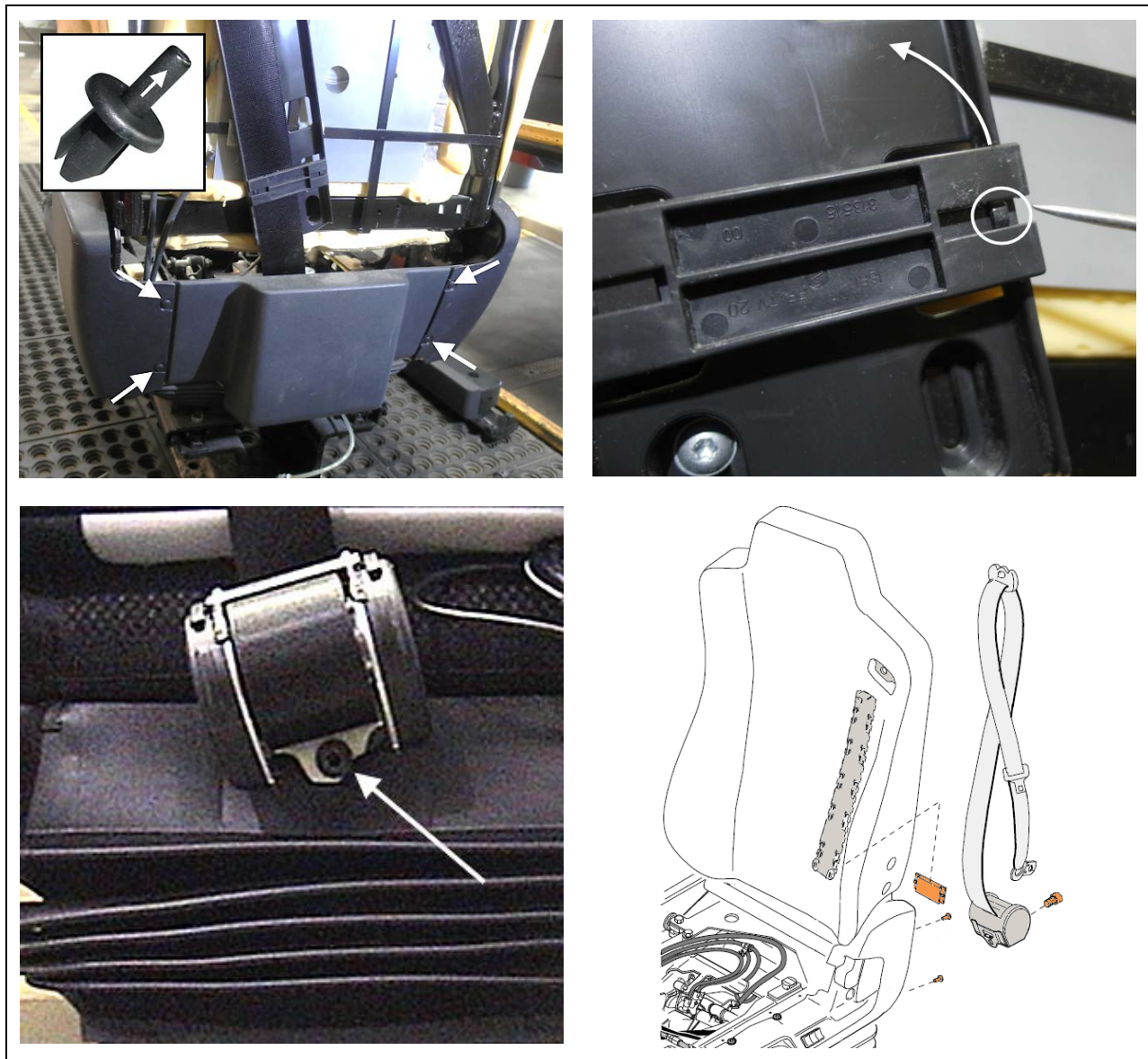
- Remove both seat armrests.
- Disengage J hooks and cut the cable ties holding together the lower edges of the backrest seat cover.



- Remove the backrest seat cover (unhook the side and center Velcro's).
- Pass the belt and belt buckle through the seat cover opening.
- Unscrew the belt upper mount (special Torx screw with shoulder).
- Remove the cardboard covering at the back of the seat backrest and pass the belt and buckle through the seat opening.



- Remove the belt mechanism plastic cover at the back of the seat (remove the 4 trim clips by pushing out the center pin).
- Disengage the sliding rail clip at the back of the seat to free the belt from the rail (press one of the pin and slide clip up or down).
- Unscrew the seat belt mechanism from the back of the seat (Torx screw).



### 3. Remove seat buckle from the seat base.

- Unscrew the buckle dust cover (a small # 6 Torx screwdriver is required).
- Detach the side plastic cover to access the buckle hold down Torx screw.
- Remove the buckle and dust cover.



## 4. Install new seat buckle.

- Pass the buckle end and harness through the dust cover (it is not be possible to install the dust cover with the buckle already secured to the seat).
- Pass the new buckle harness through the air supply line opening at the back of the seat.
- Secure the new buckle to the seat using one of the new supplied Torx screw (make sure the locating pin is engaged). Apply *medium strength (blue) thread locker* to the screw threads **TORQUE: 35 Nm (26 lb-ft)**.
- Reattach the side plastic cover and re-install the dust cover.

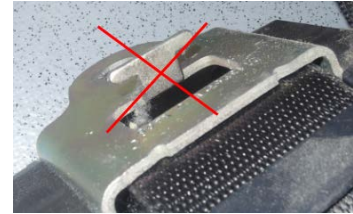


5. Install new seat belt and mechanism.

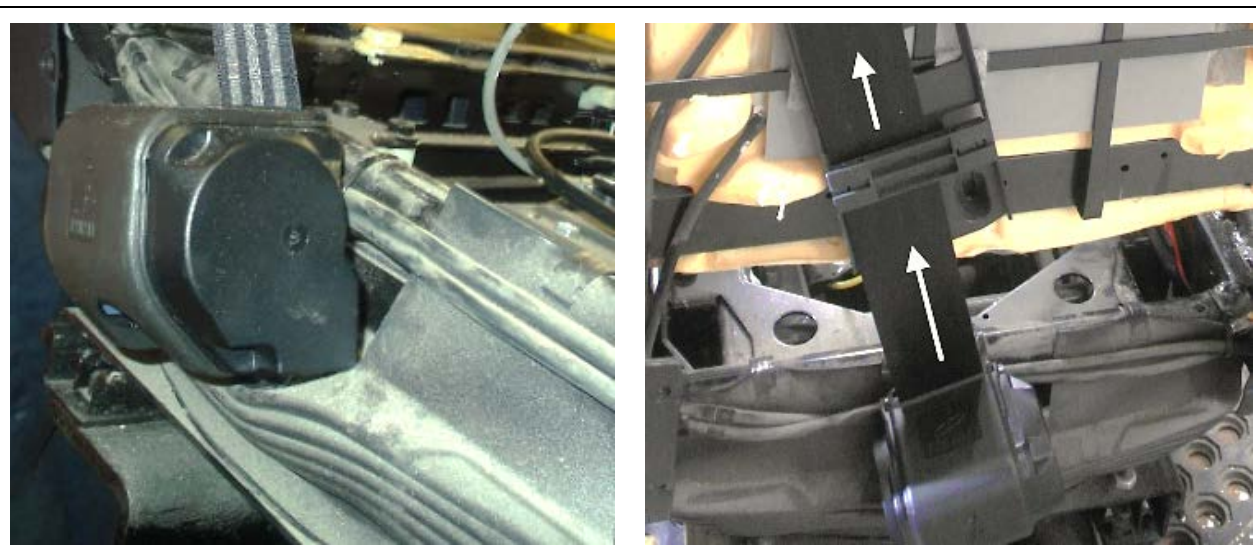
- Secure the new belt mechanism to the base of the seat (*Apply medium strength (blue) thread locker to the screw threads but hand tight only, use new supplied Torx screw*).

## NOTE

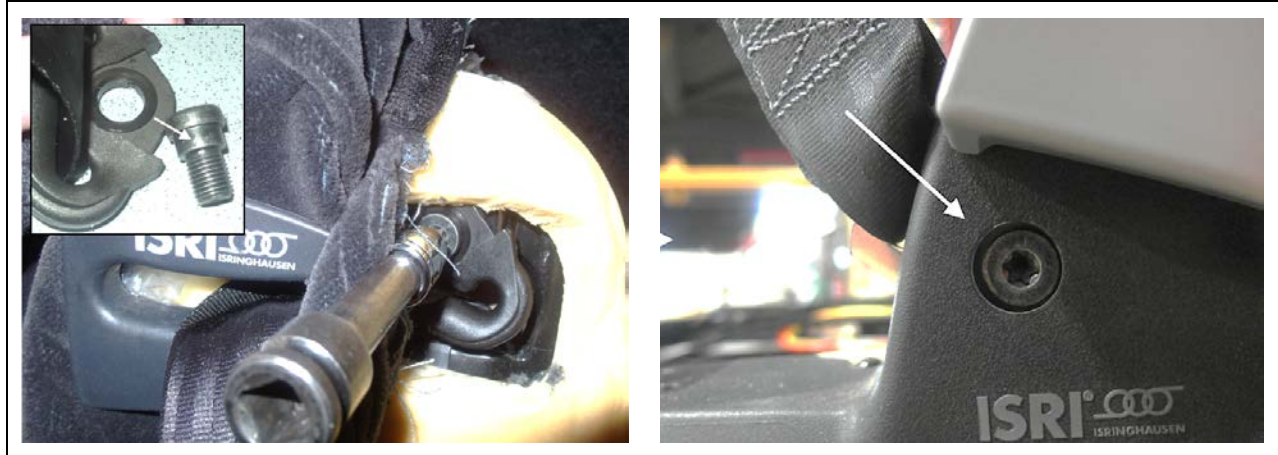
*The new seat belt mechanism does not have a locating tab.*



- Position the belt in the sliding rail and reinstall the rail clip.
- Pass the belt end and belt buckle through seat and seat cover opening.
- Secure the top part of the belt at the opening in the backrest. Use the supplied *special Torx screw with shoulder*. Apply *medium strength (blue) thread locker* to the screw threads. **TORQUE: 35 Nm (26 lb-ft)**.
- Secure the lower part of the belt to the seat (behind the adjustment lever). Center the belt end in the cover opening and tighten. *Apply medium strength (blue) thread locker* to the screw threads **TORQUE: 35 Nm (26 lb-ft)**.







- Make sure that the belt is centered in the top part of the sliding rail and that there is no belt to rail contact at the lower part of the rail. Adjust the angle of the seat belt mechanism as required.



- When correctly positioned, tighten the belt mechanism Torx hold down screw to its final torque **35 Nm (26 lb-ft)**.
- Re-install the cardboard at the back of the seat (use masking tape to hold in place).
- Slide back the seat cover over the backrest, hook the side and center Velcro's.
- Secure the seat cover at the bottom of the backrest using cable ties. Re-attach J-hooks on both sides.
- Re-install both armrests. *Apply medium strength (blue) thread locker* to the screw threads **TORQUE: 22 Nm (16 lb-ft)**.
- Make sure the belt is operating properly (moving & retracting freely). Adjust the mechanism angle as required to ensure proper operation and reinstall the belt mechanism cover.





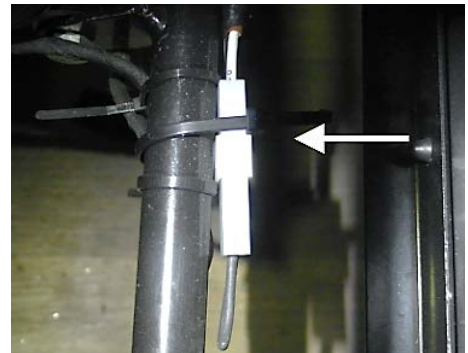
6. Connect the buckle harness to the vehicle (*vehicles with connector under the seat*).

## NOTE

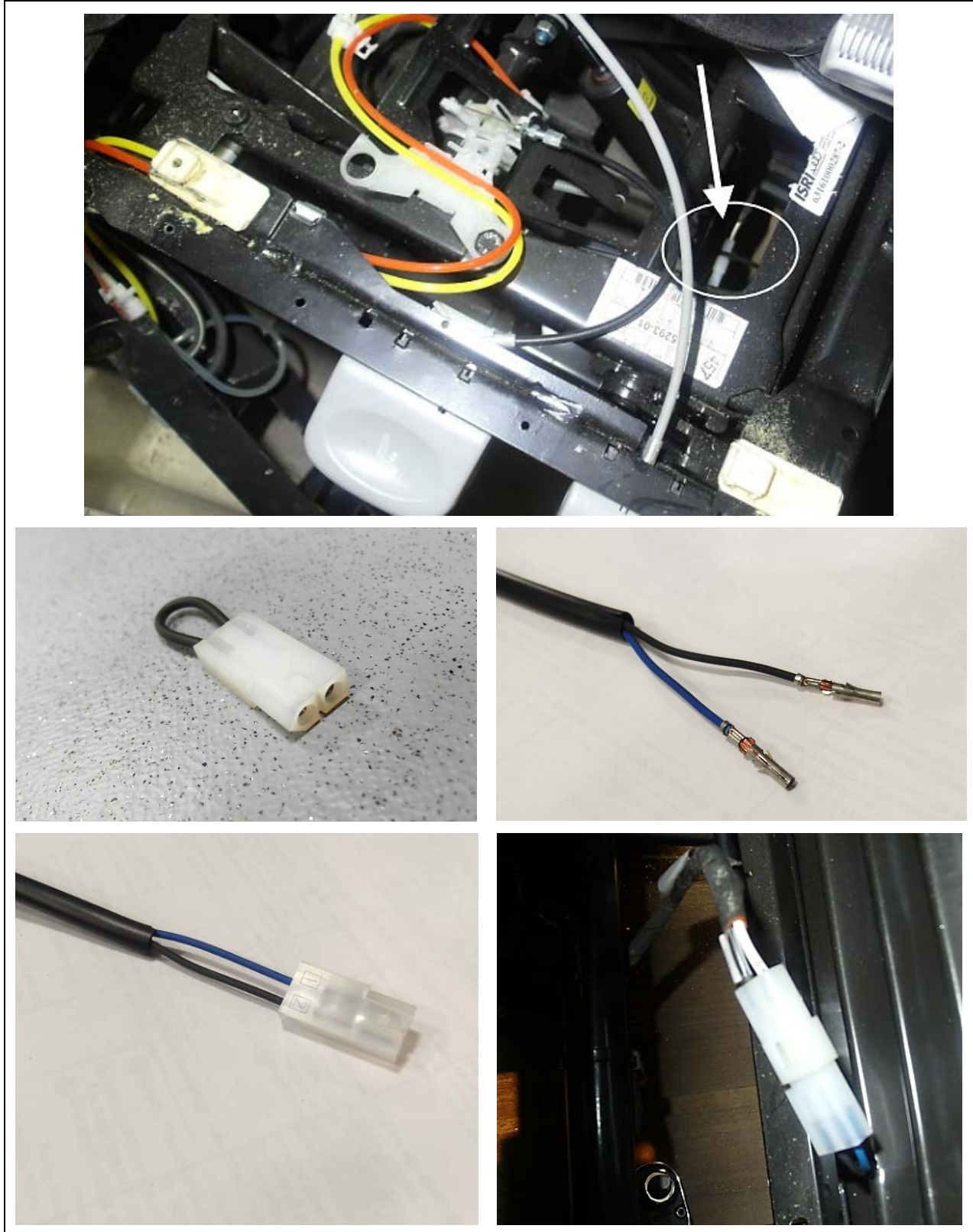
*Some vehicle may already be equipped with a belt buckle connector located under the seat base.*

*If present, the connector will be coming from the vehicle front compartment (air supply hole in the floor under the seat). The connector is sometime secured to the seat base frame as shown.*

*A jumper wire is connected to the end of it to simulate a fastened belt and prevent the illumination of the dashboard belt telltale light.*



- Locate the belt buckle connector under the seat (typical location shown, actual location may vary).
- Disconnect the jumper wire at the end of the connector.
- Cut the end of the new belt buckle harness previously installed and *shorten harness* to the required length.
- Splice the ends of both buckle harness wire and crimp the two supplied **562548** terminals.
- Insert the terminals in the supplied **562549** connector.
- Connect the belt buckle harness to the connector under the seat.



7. Connect the buckle harness to the vehicle (*vehicles without connector under the seat*).

- Route the buckle harness down to the air supply hose opening in the vehicle floor (secure to seat frame with cable ties).

## NOTE

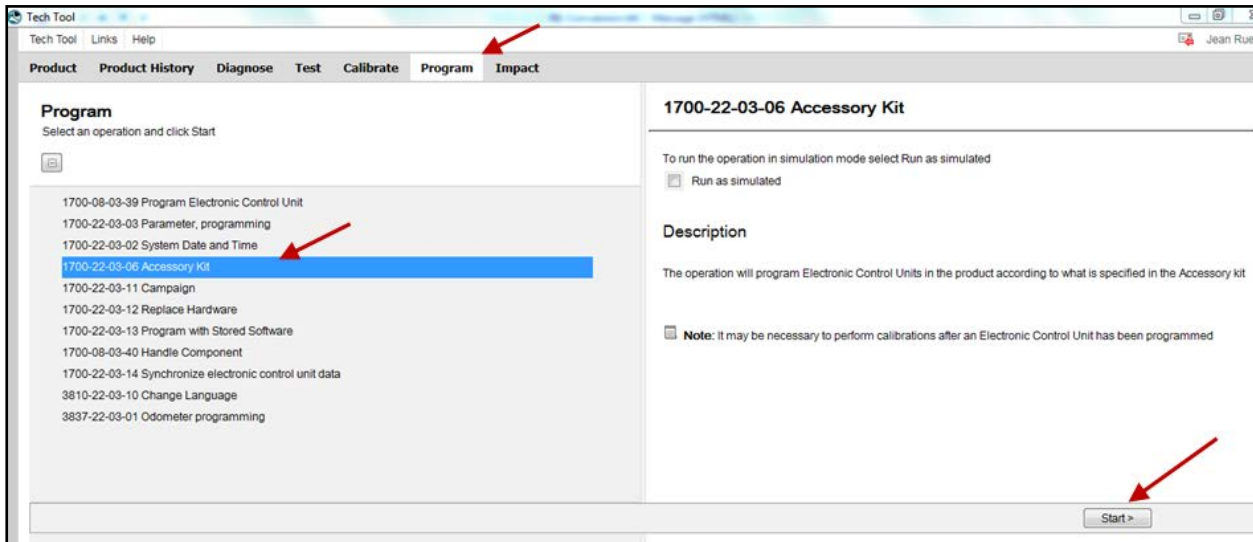
*Make sure that the harness will not get pinched by internal seat components (during seat adjustment or seat movement).*

- Pass the harness inside the vehicle front compartment (through air supply opening).
- Inside the front compartment, connect the harness to the **C.SE51** connector.
- Secure the harness with cable ties inside the compartment.

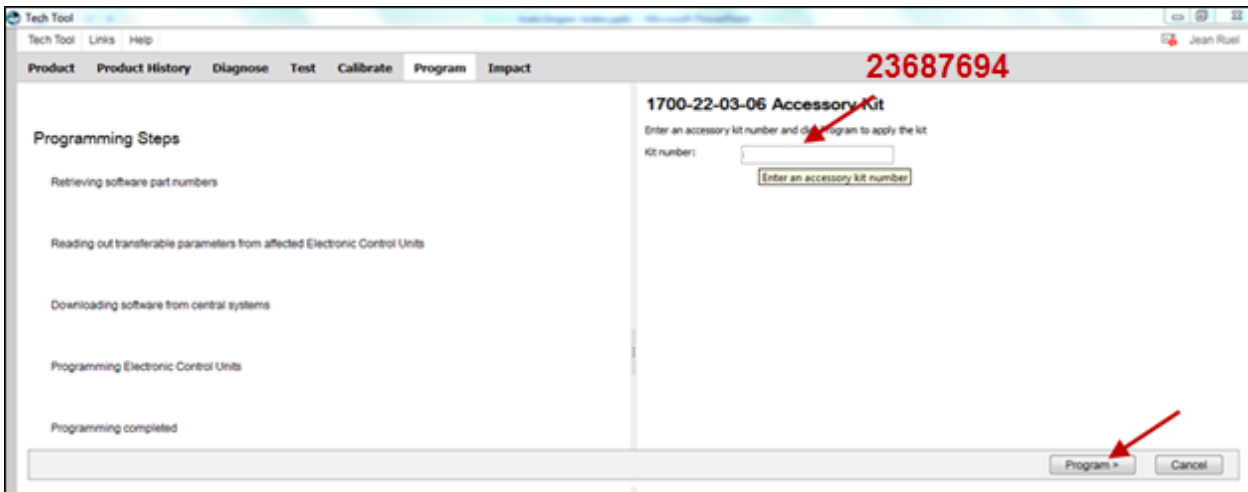


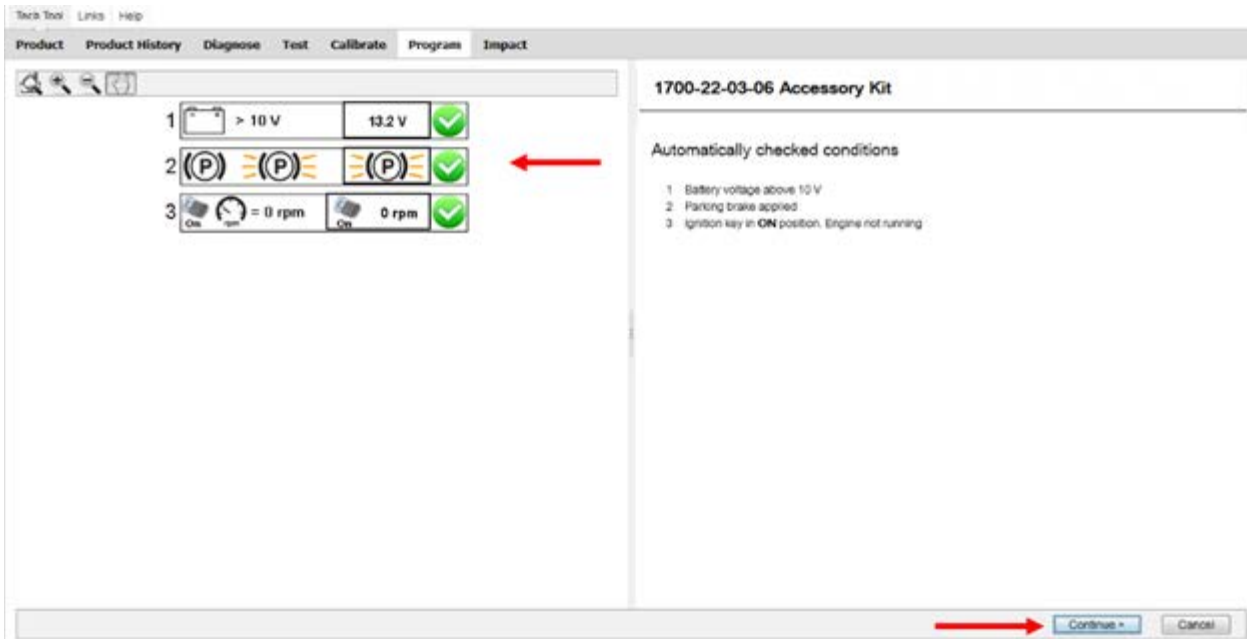
## PROGRAMMING STEPS:

1. In Premium TechTool, select PROGRAM tab. In PROGRAM tab, select operation 1700-22-03-06 Accessory Kit then clicks START.



2. Enter Accessory kit number **23687694** Click on PROGRAM button below and then follow the instructions. The programming process will start





Tech Tool Links Help

Product Product History Diagnose Test Calibrate Program Impact

### 1700-22-03-06 Accessory Kit

The following Electronic Control Units will be programmed

**Information display (MID140)**

#### Programming Steps

- Reading out transferable parameters from selected Electronic Control Units
- Retrieving software part numbers
- Downloading software from central systems
- Testing programming speed
- Programming Electronic Control Units and restoring transferable parameters (High speed)

Progress bar: 0% (red arrow pointing to the start)

Programming completed

Continue >

Tech Tool Links Help

Product Product History Diagnose Test Calibrate Program Impact

### 1700-22-03-06 Accessory Kit

The following Electronic Control Units will be programmed

**Information display (MID140)**

#### Programming Steps

- Reading out transferable parameters from selected Electronic Control Units
- Retrieving software part numbers
- Downloading software from central systems
- Testing programming speed
- Programming Electronic Control Units and restoring transferable parameters (High speed)

- Turn the ignition key to OFF position
- Wait 10 seconds
- Turn the ignition key to ON position

Programming completed

Continue >





## PARTS / WASTE DISPOSAL

Discard waste according to applicable environmental regulations (Municipal/State[Prov.]/ Federal)

## ESTIMATED TIME

The time required to perform this special bulletin is approximately 3.0 hours.

Access all our Service Bulletins on <http://techpub.prevostcar.com/en/>

or scan the QR-Code with your smart phone.

E-mail us at [technicalpublications\\_prev@volvo.com](mailto:technicalpublications_prev@volvo.com) and type "ADD" in the subject to receive our warranty bulletins by e-mail.



Prevost engages in a continuous program of testing and evaluating to provide the best possible product. Prevost, however, is not committed to, or liable for updating existing products.