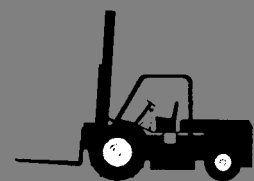
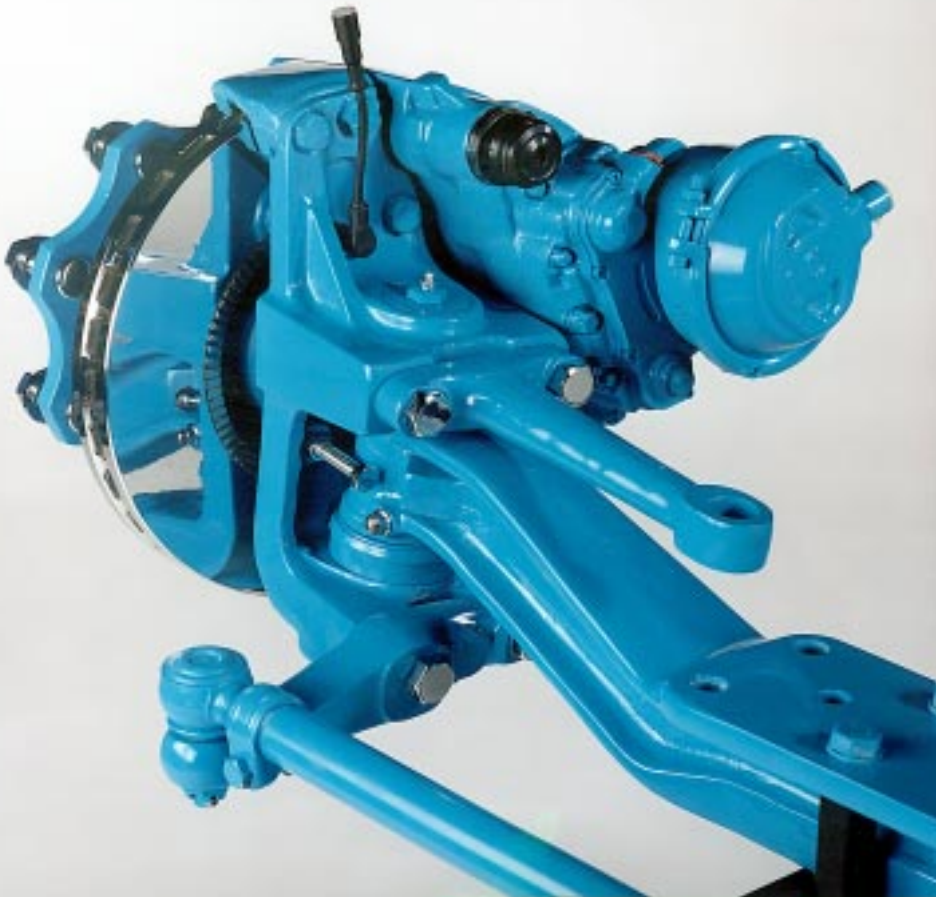


**SERVICE MANUAL
GENERAL INFORMATION
NDS Axle range**



SPICER SPECIALITY AXLE DIVISION



INFORMATION ABOUT THIS MANUAL.**THIS MANUAL IS DIVIDED INTO THE FOLLOWING GENERAL SECTIONS:-**

- 1) GENERAL INFORMATION (this section)
- 2) LUBRICATION AND MAINTENANCE
- 3) REMOVAL AND REFITTING OF THE SWIVEL (KNUCKLE) ASSEMBLY
- 4) REMOVAL AND REFITTING OF THE BRAKE ASSEMBLY
- 5) PARTS IDENTIFICATION

The description, testing procedures, and specifications contained in this parts / service publication were current at time of printing. This manual will not be updated. If in doubt about any aspect of maintenance or servicing of the axle please contact the vehicle builder or our service department direct.

Spicer Speciality Axle Division products are subject to continual development and we reserve the right to modify procedures and to make changes in specifications at any time without prior notice and without incurring obligation.

The recommendations of the vehicle manufacturer should be considered as the primary source of service information regarding this **SPICER**® product. This manual is intended to be used as a supplement to such information.

Any references to brand names in this publication is made simply as an example of the types of tools and materials recommended for use and, as such, should not be considered as an endorsement.

Spicer Speciality Axle division recommends following all manufacturers recommendations for the proper handling and disposal of lubricants and solvents. For further information please contact the supplier of lubricants and solvents.

IMPORTANT NOTICE

THIS SYMBOL IS USED THROUGHOUT THIS MANUAL, TO CALL ATTENTION TO PROCEDURES WHERE CARELESSNESS OR FAILURE TO FOLLOW SPECIFIC INSTRUCTIONS MAY RESULT IN PERSONAL INJURY OR COMPONENT DAMAGE. DEPARTURE FROM THE INSTRUCTIONS, CHOICE OF TOOLS, MATERIALS AND RECOMMENDED PARTS MENTIONED IN THIS PUBLICATION MAY JEOPARDISE THE PERSONAL SAFETY OF THE SERVICE TECHNICIAN OR VEHICLE OPERATOR.

SPICER SPECIALITY AXLE DIVISION URGES CAUTION WHEN PERFORMING ANY SERVICE OR MAINTENANCE PROCEDURE



WARNING: FAILURE TO FOLLOW INDICATED PROCEDURES CREATES A HIGH RISK OF PERSONAL INJURY TO THE SERVICE TECHNICIAN.



NOTE: FAILURE TO FOLLOW INDICATED PROCEDURES MAY CAUSE COMPONENT DAMAGE OR MALFUNCTION

FOR EASE OF ASSEMBLY / DISASSEMBLY:

HELPFUL REMOVAL / INSTALLATION PROCEDURES TO AID IN THE SERVICE OF YOUR NDS AXLE

EVERY EFFORT HAS BEEN MADE TO ENSURE THE ACCURACY OF THE INFORMATION CONTAINED WITHIN THIS MANUAL.

HOWEVER, SPICER SPECIALITY AXLE DIVISION MAKES NO EXPRESSED OR IMPLIED WARRANTY OR REPRESENTATION BASED ON THE ENCLOSED INFORMATION.

ANY ERRORS OR OMISSIONS MAY BE REPORTED TO :

THE TECHNICAL PUBLICATIONS DEPARTMENT
SPICER SPECIALITY AXLE DIVISION
ABBAY ROAD
KIRKSTALL
LEEDS
LS5 3NF
TEL: 0044-113-2584611
FAX: 0044-113-2091115

**WARNINGS!****NON ASBESTOS FIBRES!**

ALTHOUGH NON OF THE BRAKE LININGS USED ON THE NDS RANGE OF AXLES CONTAIN ASBESTOS.

IT SHOULD BE NOTED THAT NON ASBESTOS BRAKE LININGS CAN STILL CONTAIN INGREDIENTS WHICH CAN PRESENT HEALTH RISKS IF INHALED.

ACCORDINGLY CARE SHOULD BE TAKEN TO AVOID THE CREATION AND INHALATION OF DUST WHEN BRAKES ARE SERVICED.

FURTHER DETAILS SHOULD BE OBTAINED FROM YOUR EMPLOYER OR THE BRAKE MANUFACTURER!

**PERSONAL INJURY!**

TO PREVENT PERSONAL INJURY, ALWAYS WEAR APPROPRIATE PERSONAL PROTECTION EQUIPMENT (P.P.E) WHEN PERFORMING ANY MAINTENANCE WORK.

**SOLVENT CLEANERS!**

IF SOLVENT BASED CLEANERS ARE TO BE USED, THE MANUFACTURERS INSTRUCTIONS SHOULD BE CAREFULLY FOLLOWED AS WELL AS TAKING THE FOLLOWING BASIC PRECAUTIONS:-

- 1) WEAR EYE PROTECTION!
- 2) WEAR PROTECTIVE CLOTHING!
- 3) WORK IN A WELL VENTILATED AREA!
- 4) DO NOT USE PETROLIUM (GASOLINE) BASED PRODUCTS DUE TO THE RISK OF FIRE AND / OR EXPLOSION!

ON NO ACCOUNT SHOULD SOLVENT CLEANERS BE USED ON ANY OF THE BEARING COMPONENTS CONTAINED IN YOUR NDS RANGE AXLE

**NOTE:**

WELDING , MACHINING OR MODIFICATION OF ANY AXLE COMPONENT IS PROHIBITED UNLESS NOTED IN THIS MANUAL, OR OTHER SPICER SPECIALITY AXLE DIVISION SERVICE LITERATURE.

GLOSSARY OF TERMS

Due to the international nature of Spicer Speciality Axle Division products certain terms and words require clarification; hence the following list:-

ENGLISH

SWIVEL
COTTER PIN
AXLE BED
STEERING LEVER
HUB NUT
SWIVEL STOP SCREW
TOP / BOTTOM CAP
BUSHES
LUBRICATOR

U.S.A

KNUCKLE
DRAW KEY
I BEAM
TIE ROD ARM
SPINDLE NUT
STOP BOLT
KING PIN CAP
BUSHINGS
ZIRC

GENUINE SPICER SERVICE PARTS

Should an axle assembly require replacement component parts, it is recommended that Spicer Speciality Axle Division service parts be used. Spicer Speciality Axle Division service parts are manufactured under the same rigid specification as are the original equipment axle components. This assures the customer who uses genuine Spicer Speciality Axle Division service parts, maximum reliability for a Spicer Speciality Axle Division assembly. Spicer Speciality Axle Division service parts are available through either your vehicle manufacturer or through Spicer Speciality Axle Division spares department. The use of non Spicer service parts may cause premature component failure and void the warranty.

The items included in the spare parts section of this manual are currently available as service spare parts at the time of printing.

The part numbers and illustrations are provided specifically as a guide only.

ORDERING SPARE PARTS

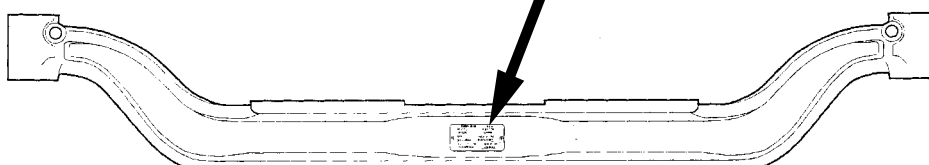
In order to assist our spares department when ordering spare parts for your NDS range axle, please have the following information to hand.

1. Axle type
2. Axle list number
3. serial number

These can be found on the axle nameplate situated on the front of the axle bed as shown below:-



typical example of nameplate



ALWAYS USE GENUINE *SPICER*® SPARE PARTS!

APPLICATION POLICY

Capability ratings, features and specifications vary depending upon the model type of service. Applications approvals must be obtained from Spicer Speciality axle division. We reserve the right to change or modify our product specifications, configurations, or dimensions at any time without notice.



**SPICER SPECIALITY AXLE DIVISION
ABBAY ROAD
LEEDS LS5 3NF
ENGLAND**

TEL (+44-113) 2584611 FAX (+44-113) 2586097