



# MAINTENANCE INFORMATION

**MI24-22A**

DATE :	July 2024	SECTION : 00 GENERAL
SUBJECT :	<b>HOW TO USE VIN WITH THE NEW CHASSIS IDENTIFICATION NUMBER</b>	

Revision: A

Remove the important notice box not applicable

06-25-2024

## APPLICATION

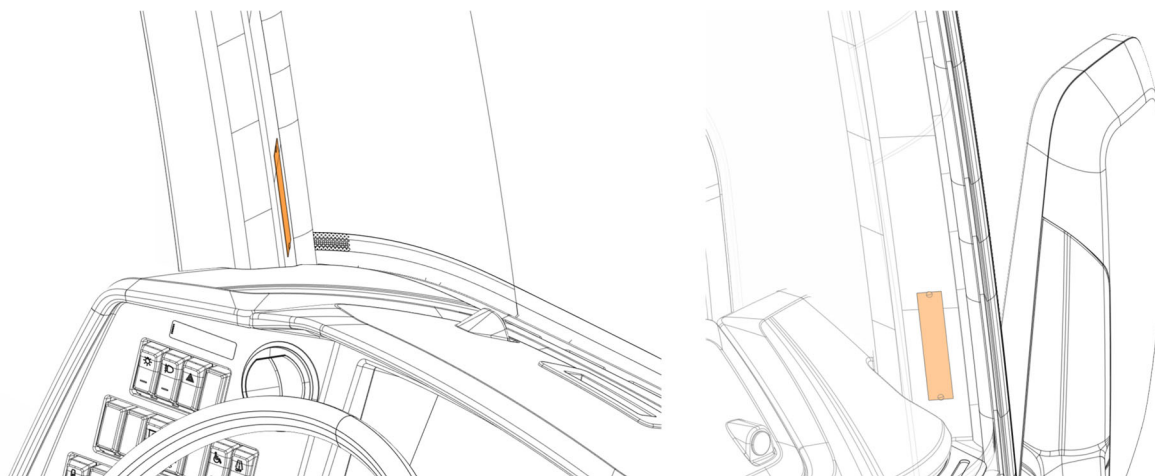
Model	VIN
	<p>VIN: <b>XXXXXXXXXXXX</b> PREVOST CAR INC. 875 CLARE BOWEN RD. - CANADA</p>
X3-45 coaches Model Year : 2024 -	From 2P9G33490 <u>RC001600</u> up to
X3-45 VIP commercial use Model Year : 2025 -	From 2P9CS3499 <u>SC110600</u> up to
X3-45 VIP motorhomes Model Year : 2025 -	From 2P9BS3493 <u>SC110605</u> up to
H3-45 coaches Model Year : 2024 -	From 2P9H33495 <u>RC001001</u> up to
H3-45 VIP motorhomes Model Year : 2025 -	From 2P9VS3498 <u>SC110001</u> up to

## DESCRIPTION

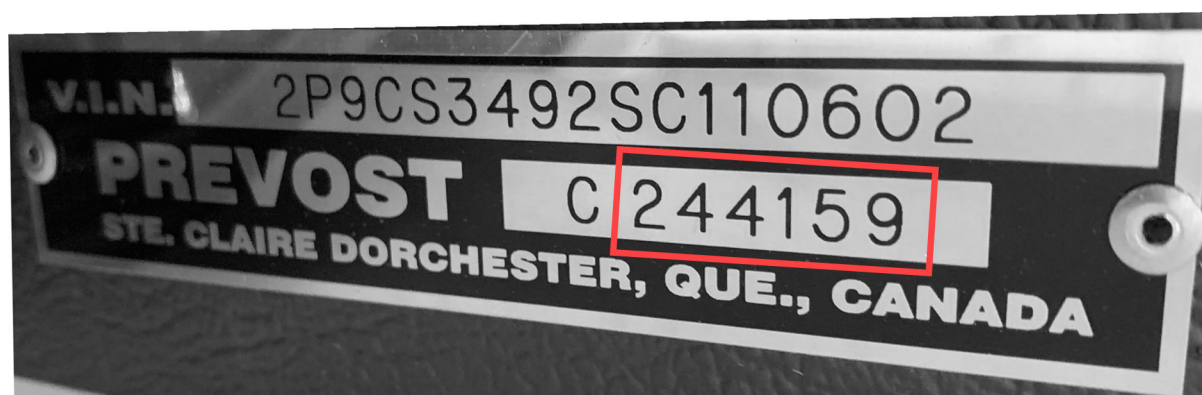
Prevost introduce new vehicle identification number (VIN) with a chassis ID number. This bulletin is to explain how to use the new chassis ID versus vehicle identification number (VIN) number with the application IMPACT.

## HOW LOCATE THE NEW CHASSIS IDENTIFICATION NUMBER ON THE VIN PLATE

The vehicle identification number (VIN) number is engraved on a plate attached to the left front pillar, near the windshield (driver's side). It is visible from the outside.

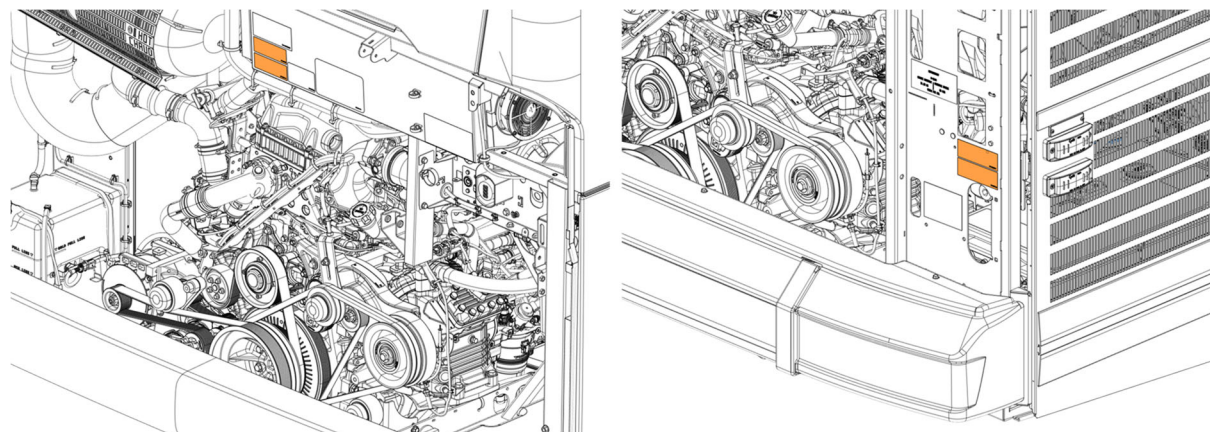


On the VIN plate for vehicles with the VIN start with **2P9** from year **2024** for buses and from year **2025** for motorhomes. You will find the new **chassis identification number** on the plate.



## HOW LOCATE THE CHASSIS ID NUMBER ON THE VEHICLE EMISSION CONTROL DECAL

The vehicle emission control decal is located inside the engine compartment.



On the vehicle emission control decal for vehicles with the VIN start with **2P9** from year **2024** for buses and from year **2025** for motorhomes. You will find the new **chassis identification number** on the plate.

PREVOST	VEHICLE EMISSION CONTROL INFORMATION PREVOST, A DIVISION OF VOLVO GROUP CANADA INC.
VEHICLE FAMILY IDENTIFICATION: RVPT2VOCVF01 VIN: 2P9CS3492SC110602	
REGULATORY SUB-CATEGORY: Compression-ignition Heavy HDV vocational regional	
DATE OF MANUFACTURE: 06/2024	CHASSIS: 244159
VEHICLE EMISSION CONTROL SYSTEM: LRRA TPMS WR	
THIS VEHICLE COMPLIES WITH U.S. EPA REGULATIONS FOR 2024 MODEL YEAR HEAVY-DUTY VEHICLES.	
The information on this label corresponds with the certification year, which may not be the same as the manufacturer's model year.	
010520	

PREVOST	INFORMATIONS CONTRÔLE DES ÉMISSIONS DU VÉHICULE PREVOST, UNE DIVISION DU GROUPE VOLVO CANADA INC.
IDENTIFICATION FAMILLE DU VÉHICULE : RVPT2VOCVF01 VIN : 2P9CS3492SC110602	
SOUS-CATÉGORIE RÉGLEMENTAIRE : Véhicule lourd vocation régionale à allumage par compression	
DATE DE FABRICATION : 06/2024	CHASSIS : 244159
SYSTÈME DE CONTRÔLE DES ÉMISSIONS DU VÉHICULE : LRRA TPMS WR	
CE VÉHICULE EST CONFORME AUX RÉGLEMENTATIONS AMÉRICAINES DE L'EPA POUR LES VÉHICULES LOURDS DE L'ANNÉE MODÈLE 2024.	
Les informations sur cette étiquette correspondent à l'année de certification, qui peut ne pas être la même que l'année modèle du fabricant.	
010521	

## HOW TO USE IMPACT APPLICATION WITH OLD VIN AND NEW VIN WITH CHASSIS IDENTIFICATION NUMBER

With the old VIN you need to use the last 6 digits of VIN.

Ex: 2PCCS3491SC**734126**:

The screenshot shows the IMPACT application interface. The 'Search' section has a 'Chassis series' field with the value '734126'. A message box states: 'No search provided. To get a result in this list you have to provide a search string.' Below this, a search results window is displayed with the title 'There are several hits for this search criteria. Choose one of the following:'. The results table is as follows:

Chassis series	Chassis No.	Model	Marketing type	VIN
A	734126	FH	FH13 64T	YV2AS02D4CA734126
B	734126	FM (4)	FM11A42R	YV2X9J0A0FB734126
E	734126	FH	FH13 64T	9BVAS50D07E734126
PREVX	734126	PREVX	PREVX	2PCCS3491SC734126

Showing 1 to 4 of 4 entries  
25 Entries

With the New VIN you need to use the 6 digits **chassis identification number**.

Ex: VIN 2P9CS3492SC110602 = chassis ID **244159**

The screenshot shows the IMPACT application interface. The 'Search' section has a 'Chassis series' field with the value '244159'. A message box states: 'No search provided. To get a result in this list you have to provide a search string.' Below this, a search results window is displayed with the title 'There are several hits for this search criteria. Choose one of the following:'. The results table is as follows:

Chassis series	Chassis No.	Model	Marketing type	VIN
A	244159	FH12	FH12 62R	YV2A4B2C5TA244159
B	244159	FH12	FH12 42T	YV2A4DA9YB244159
N	244159	VN		4V4ND5RH1YN244159
PREVX	244159	PREVX	PREVX	2P9CS3492SC110602

Showing 1 to 4 of 4 entries  
25 Entries

Access all our Service Bulletins on <http://techpub.prevostcar.com/en/>  
Or scan the QR-Code with your smart phone

**Are you a Vehicle owner?**  
E-mail us at [technicalpublications\\_prev@volvo.com](mailto:technicalpublications_prev@volvo.com) and type "ADD" in the subject to  
receive warranty bulletins applicable to your vehicle(s) by e-mail.

