

# PREVOST

## Instruction Sheet


## IS-23117

### WHEELCHAIR ENTRANCE DOOR SENSOR IMPROVEMENT

First Release

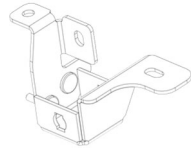
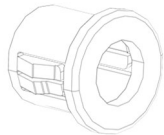



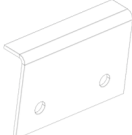
06-05-2025

#### APPLICATION

Model	VIN	
X3-45 coaches Model Year : 2020 - today	From 2PCG33495LC736493	
H3-45 coaches Model Year : 2024 - today	From 2PCH3349XRC721453	

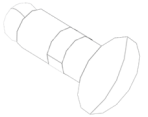


#### MATERIAL

Kit #2801178 includes the following parts:

Part No	Description		Qty
0600280	DOOR SENSOR SUPPORT		1
504083	BUSHING SNAP .250X.375X.125		2
5001860	PIN HITCH CLIP SS .054 DIA X3/16 TO 1/4 X3/4		1
509815	FIR TREE MOUNTING		1
504637	CABLE TIE, NYLON BLACK (STD)		1
0600279	PLATE		1

Writer:

<QF7720959 rev 5>

504340	RIVET POP DOME SS OE 1/8 (0.126_0.187)		2
500539	NUT HEX NYRT NX500 M4-0.7		2
500855	WASHER FLAT N500 .188X.438X.049		2
IS-23117	INSTRUCTION SHEET		1
FI-23117	FEUILLE D'INSTRUCTION		1

***NOTE***

*Material can be obtained through regular channels.*

## SAFETY PRECAUTIONS

- Eye protection should always be worn when working in a shop.
- Rules for Personal Protection Equipment should always be respected. Wear your PPE including but not limited to the following:



# Safety First!



## PROCEDURE



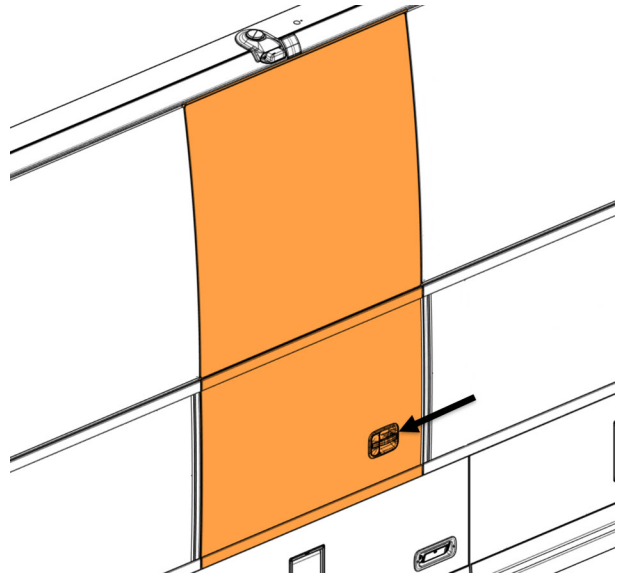
### DANGER

Park vehicle safely, apply parking brake, stop the engine. Prior to working on the vehicle, set the ignition switch to the OFF position and trip the main circuit breakers equipped with a trip button. On Commuter type vehicles, set the battery master switch (master cut-out) to the OFF position.

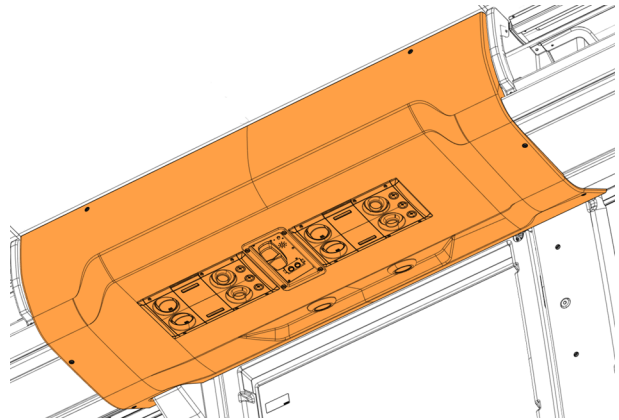
Lock out & Tag out (LOTO) must be performed during set-up, maintenance or repair activities. Refer to your local procedure for detailed information regarding the control of hazardous energy.

## INSTALL THE NEW DOOR SENSOR SUPPORT

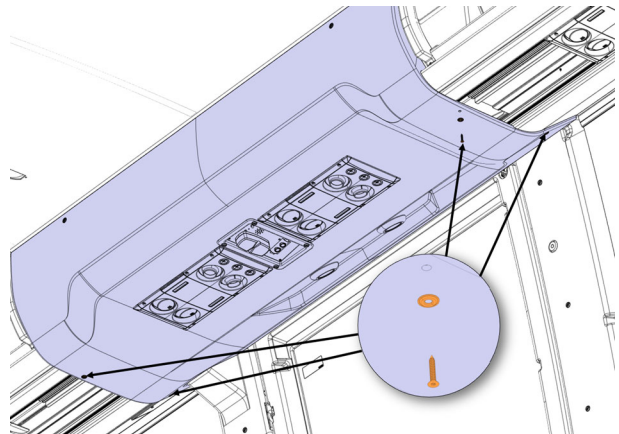
1. Open the wheelchair entrance door.



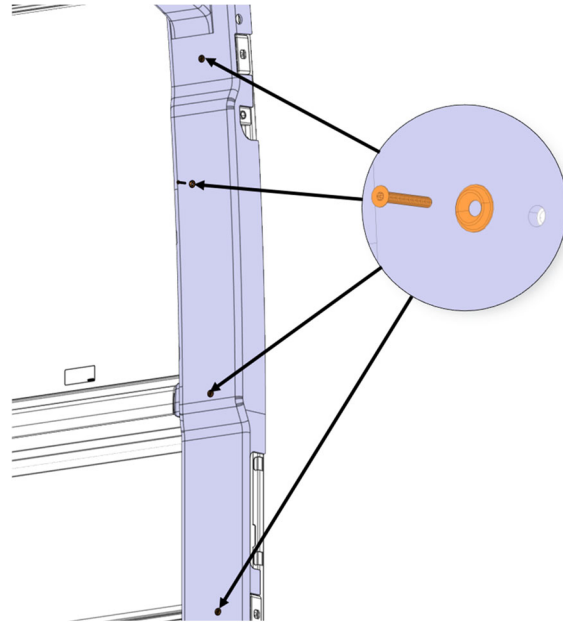
2. Locate the wheelchair entrance door ceiling panel inside the vehicle.



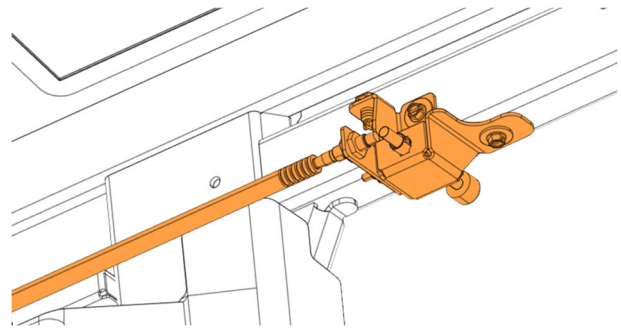
3. Remove screws (4x) and washers (4x) of the ceiling panel to be able to access to the sensor.



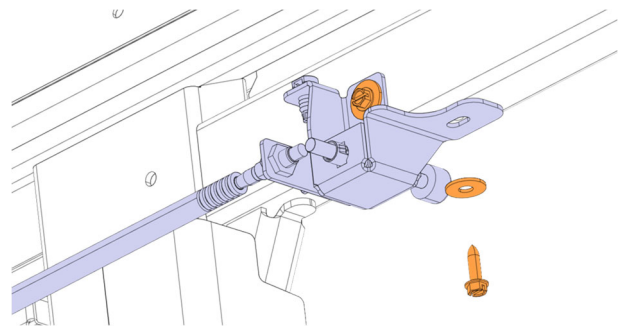
4. Remove screws (4x) and washers (4x) and the side cover post.



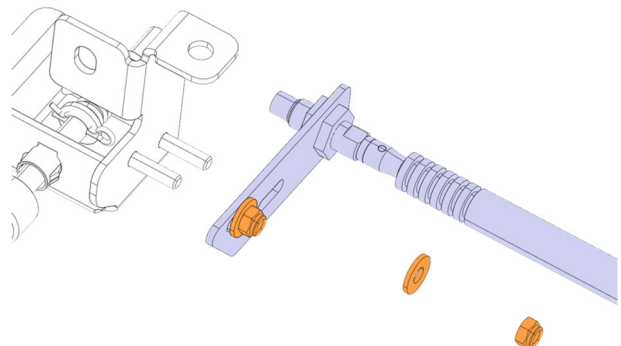
5. Locate the sensor at the top left.  
6. Disconnect the sensor and cut the cable tie attaches to the fir tree mounting.



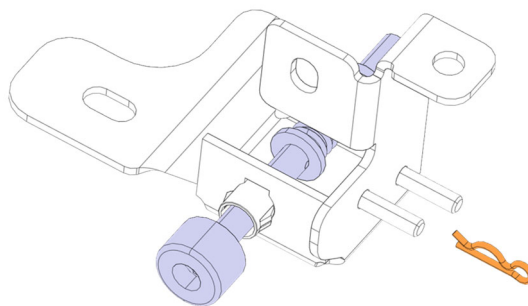
7. Remove sensor assembly, retain screws (2x) and washers (2x).



8. Disassemble the sensor, nuts (2x) and washers (2x). Discard nuts and washers.

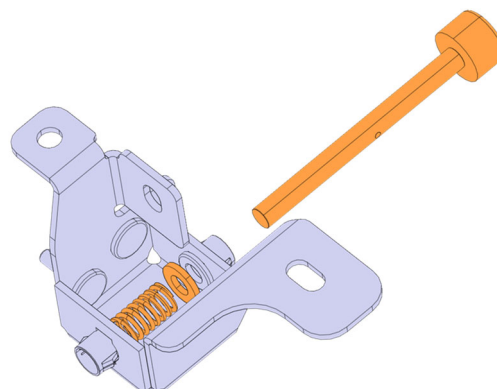


9. Remove the pin hitch clip and discard.

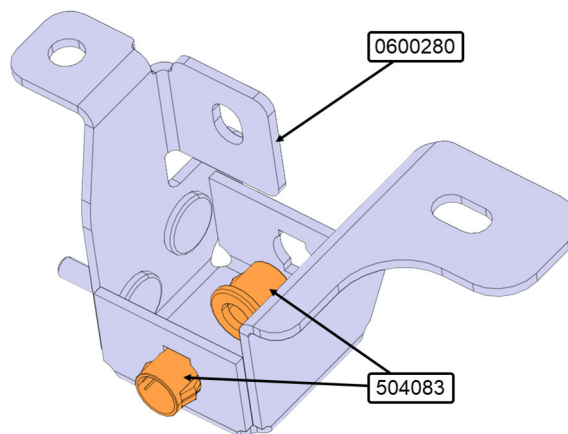


10. Remove the rod, the spring, the washer.

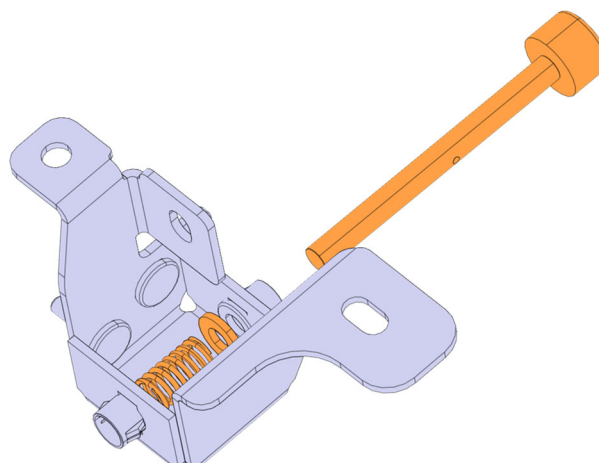
11. Discard the support.



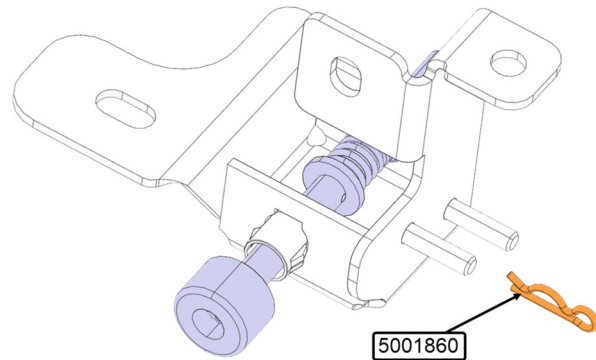
12. Install snap bushing 504083 (2x) on the new support 0600280.



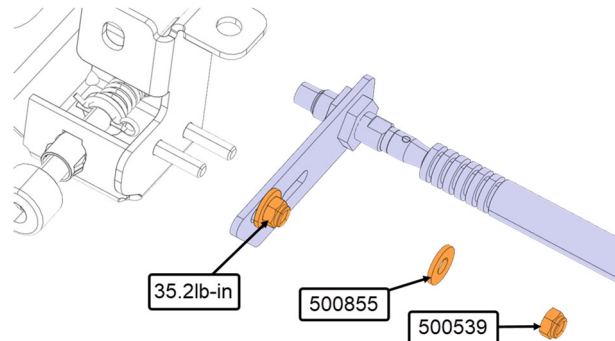
13. Reinstall the rod, the spring and the washer on the new support 0600280.



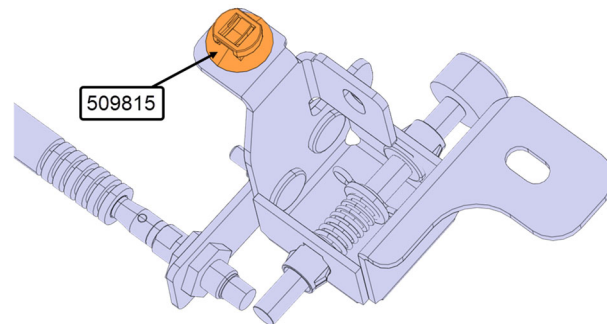
14. Install a new pin hitch clip 5001860 into the rod.



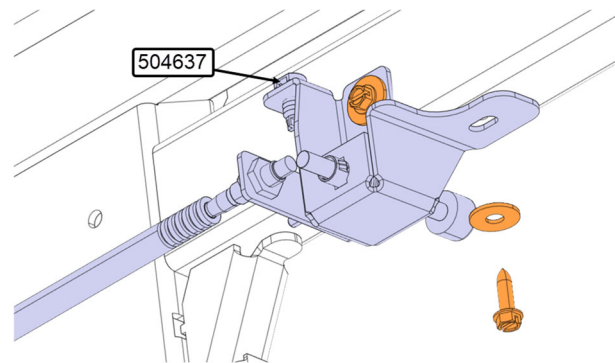
15. Reinstall the sensor, with the new nuts 500539 (2x) and the new washers 500855(2x) on the new support 0600280.  
16. Torque the nut to 35.2lb-in.



17. Install a new fir tree mounting on the new support.

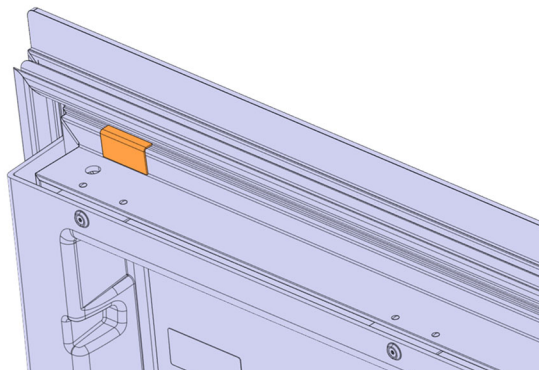


18. Reinstall sensor assembly with screws (2x) and washers (2x).  
19. Reattach the cable to the fir tree mounting with the cable tie 504637.  
20. Connect the sensor.

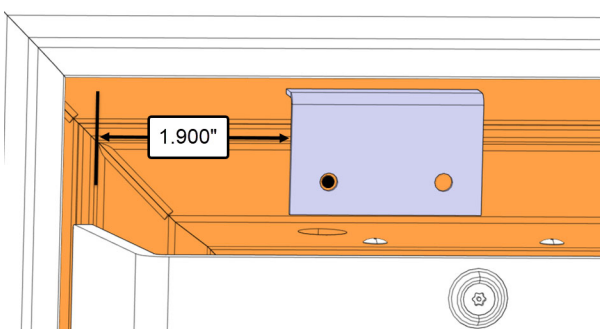


## INSTALL THE NEW PLATE ON THE DOOR

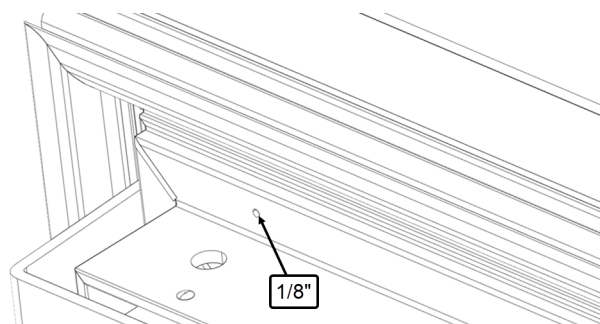
1. Locate the plate on the door.
2. Remove the old plate (use a scrapper).
3. Clean the surface with anti-silicone to remove all tape and glue.



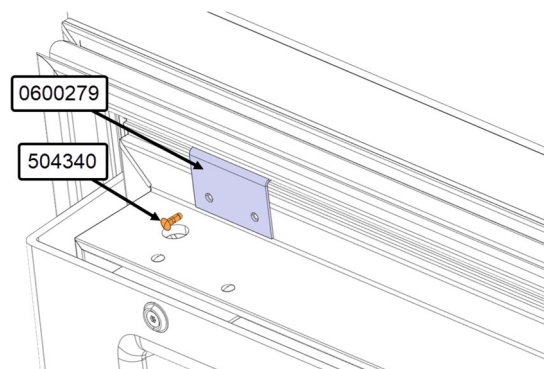
4. Marks the position of the hole using the new plate 0600279 has a template.



5. Drill a hole of  $\varnothing 1/8"$ .

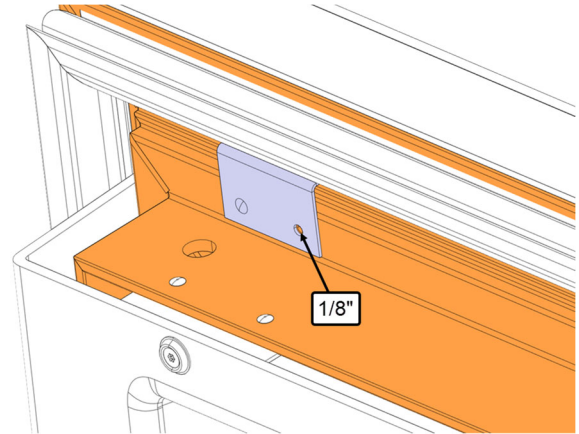


6. Install the plate 0600279 with the rivet 504340.

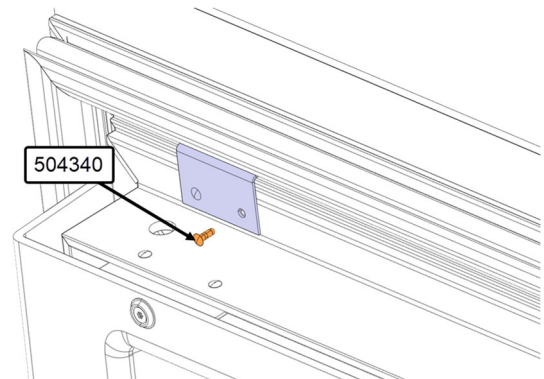




7. Drill one hole of 1/8".

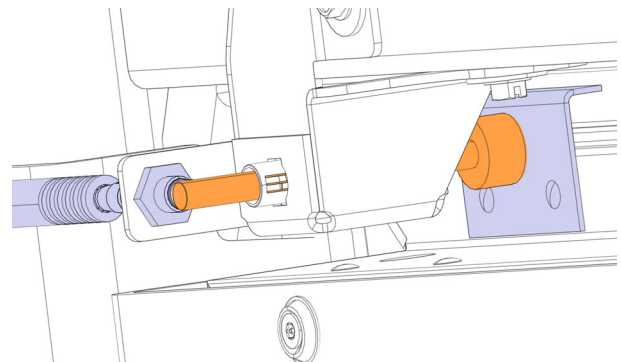


8. Secure the plate 0600279 with the rivet 504340.



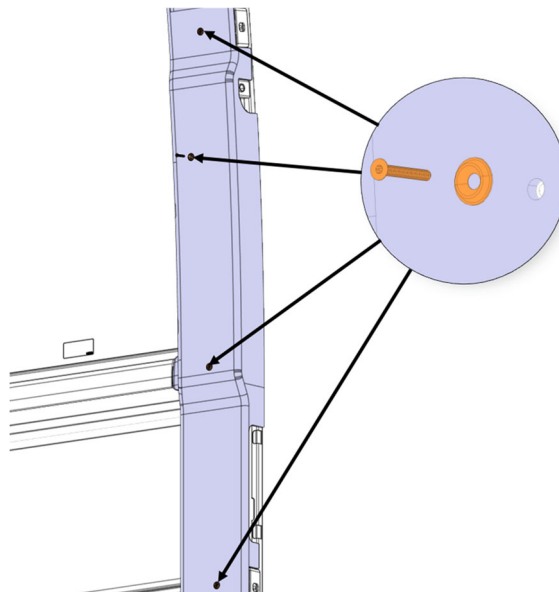
### TEST DOOR SENSOR

1. Close the door.
2. Check that the rubber bumper rests on the new door plate.
3. Check that the rod is detected by the proximity switch.

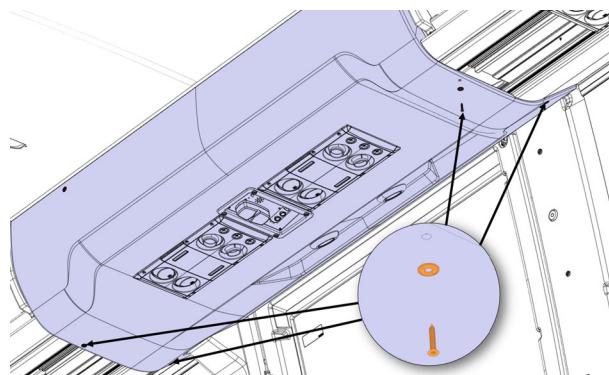


## REINSTALL INTERIOR FINISHING

1. Reinstall the side cover post with screws (4x) and washers (4x).



2. Reinstall screws (4x) and washers (4x) to secure the ceiling panel.



## PARTS / WASTE DISPOSAL

Discard waste according to applicable environmental regulations (Municipal/State[Prov.]/ Federal)