

PREVOST

Instruction Sheet

IS-24050

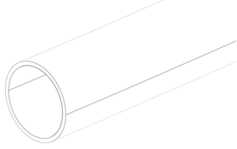

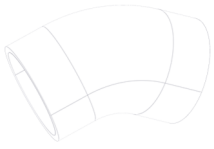
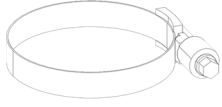
SUMP TANK HOSE REPLACEMENT H3 (UP TO J-0184)

First Release

07-01-2025

MATERIAL

Kit #407065 includes the following parts:

Part No	Description	Qty
400641	HOSE 890MM 	1
407066	PIPE 	1
530211	ELBOW 45° 3 1/2" I.D. 	1
504580	CLAMP HOSE CT BREEZE 83-105 	3
IS-24050	INSTRUCTION SHEET	1
FI-24050	FEUILLE D'INSTRUCTION	1

NOTE

Material can be obtained through regular channels.

Writer:

<QF7720959 rev 5>

SAFETY PRECAUTIONS

- Eye protection should always be worn when working in a shop.
- Rules for Personal Protection Equipment should always be respected. Wear your PPE including but not limited to the following:



Safety First!



PROCEDURE



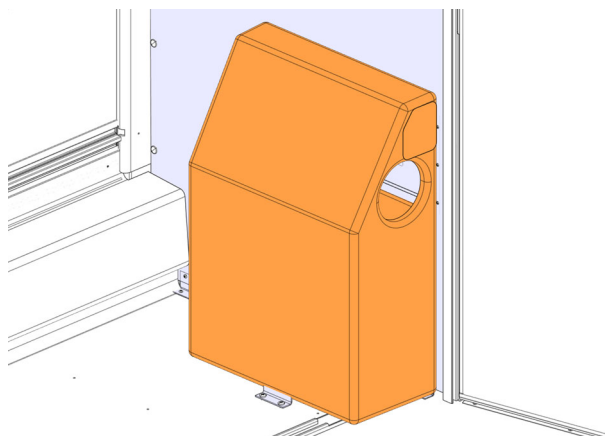
DANGER

Park vehicle safely, apply parking brake, stop the engine. Prior to working on the vehicle, set the ignition switch to the OFF position and trip the main circuit breakers equipped with a trip button. On Commuter type vehicles, set the battery master switch (master cut-out) to the OFF position.

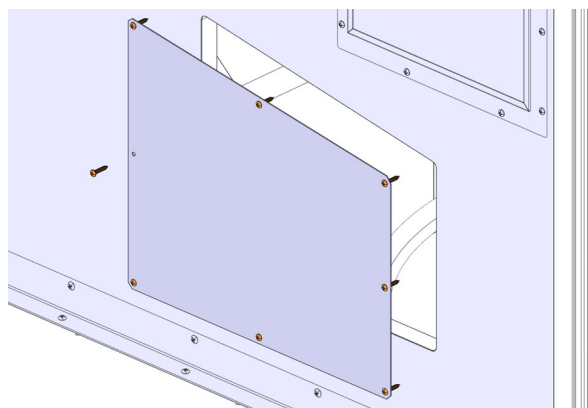
Lock out & Tag out (LOTO) must be performed during set-up, maintenance or repair activities. Refer to your local procedure for detailed information regarding the control of hazardous energy.

HOSE REPLACEMENT

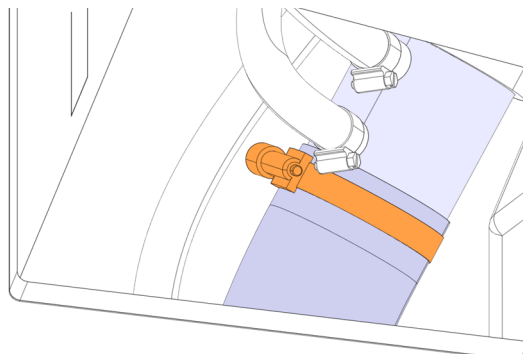
1. Remove the trash can and cover.



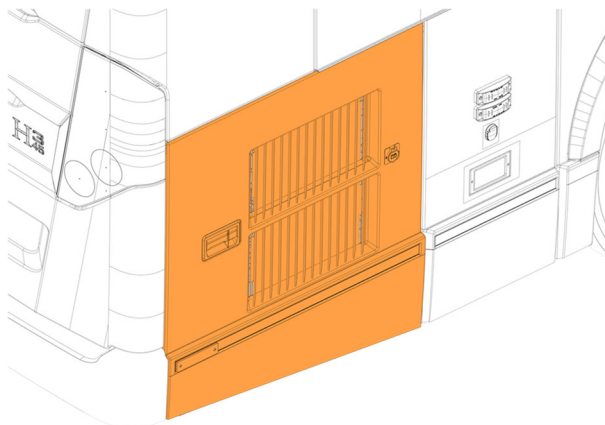
2. Remove the screws (8x) and remove the access panel.



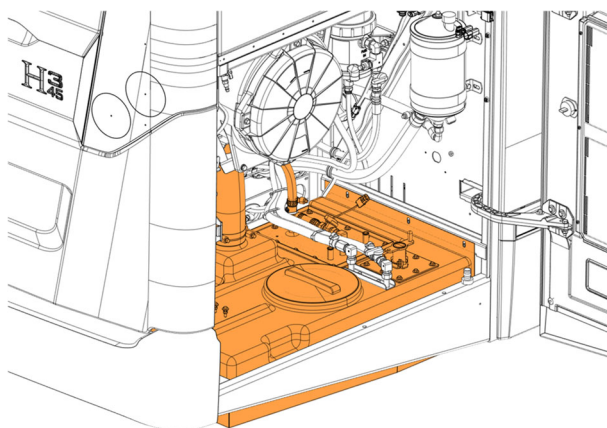
3. Disconnect the sump tank hose from the toilet.



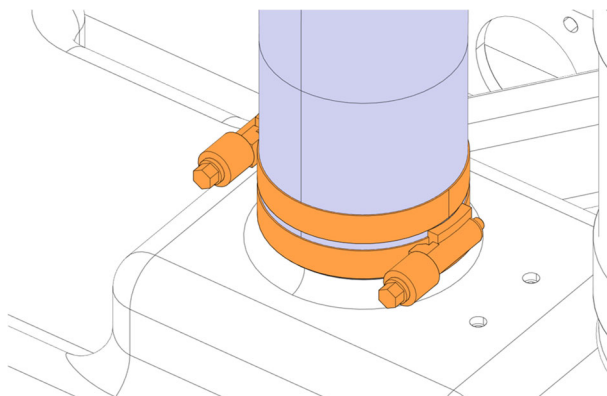
4. Open the compressor door.



5. Locate the sump tank.

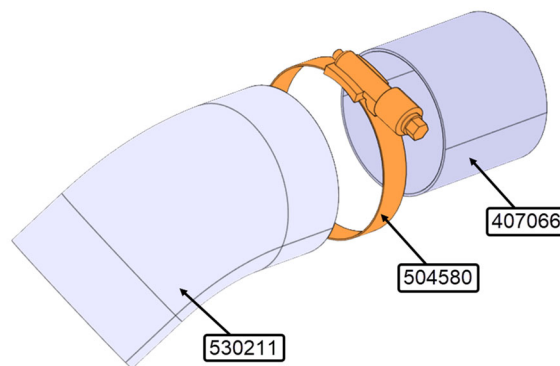


6. Disconnect the sump tank hose.
7. Keep the clamps (2x) to be reused and discard the hose.

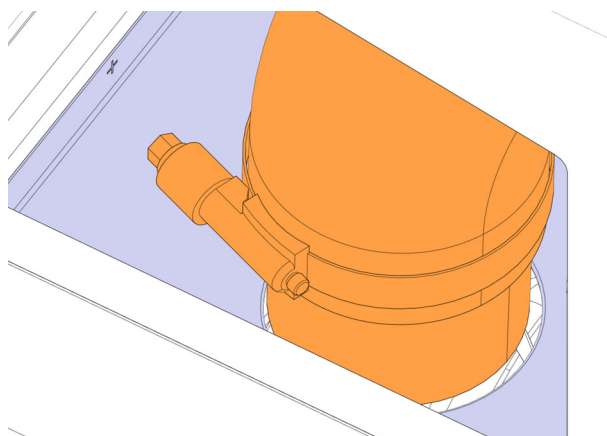


8. Assemble the elbow 530211 to the pipe 407066 with the clamp 504580 (1x).

Note: Use soap to facilitate elbow installations.

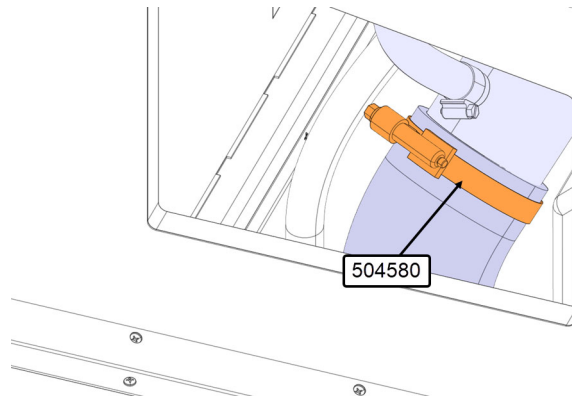


9. Install the elbow assembly into the hole of the lavatory floor.

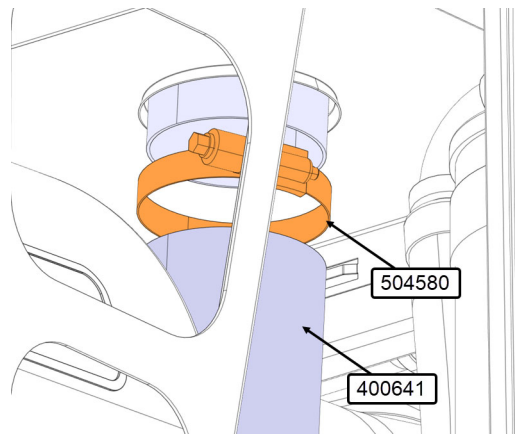


10. Secure the elbow to the toilet with the clamp 504580 (1x).

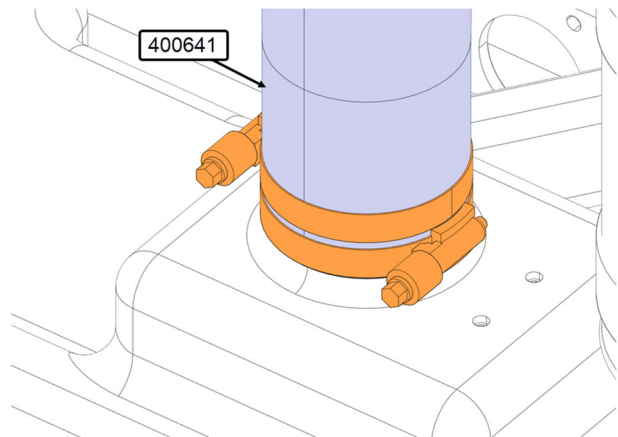
Note: Use soap to facilitate elbow installations.



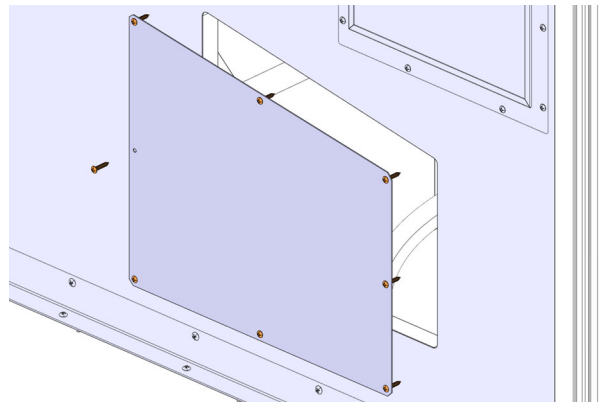
11. Connect the hose 400641 to the elbow assembly with clamp 504580 (1x).



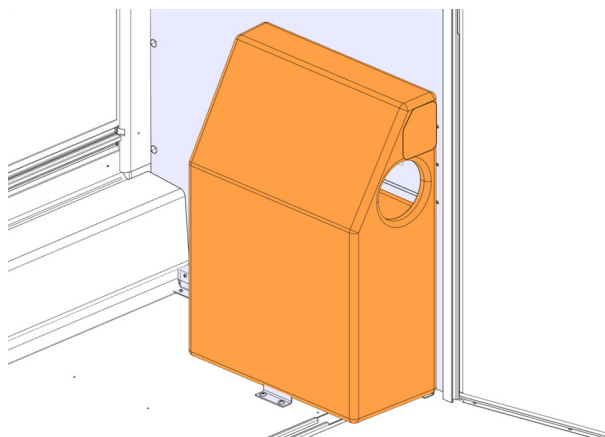
12. Connect the hose 400641 on the tank and reuse the clamps (2x) to secure the hose.
13. Cut the hose if you have an auxiliary sump tank



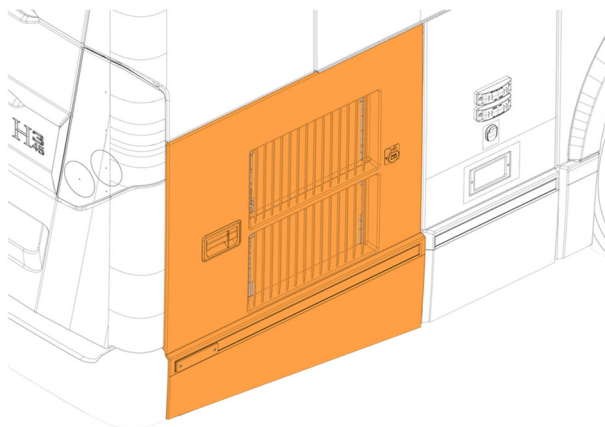
14. Reinstall the access panel with the screws (8x).



15. Reinstall the trash can and cover.



16. Close the compressor door.



PARTS / WASTE DISPOSAL

Discard waste according to applicable environmental regulations (Municipal/State[Prov.]/ Federal)