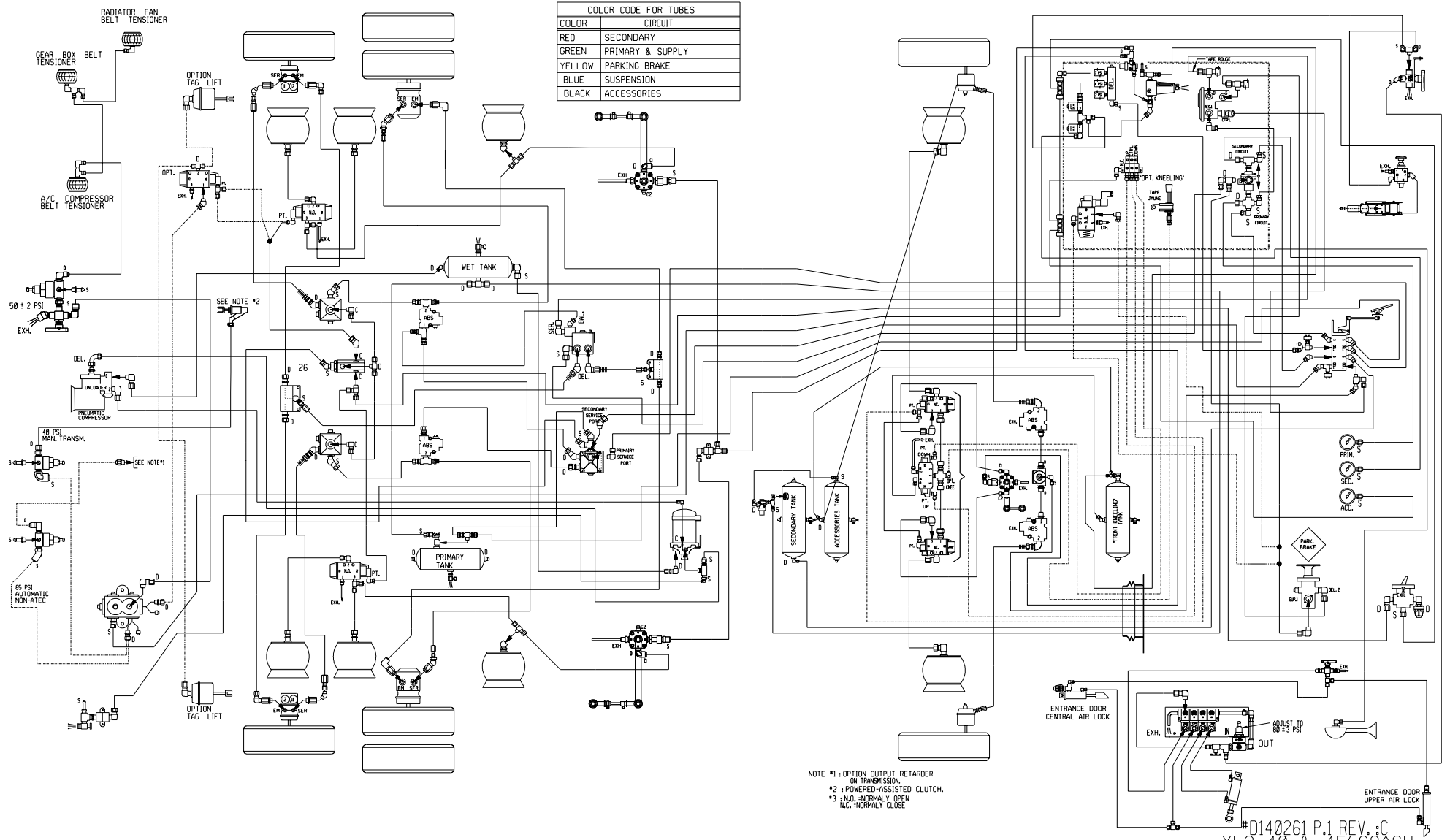


COLOR CODE FOR TUBES	
COLOR	CIRCUIT
RED	SECONDARY
GREEN	PRIMARY & SUPPLY
YELLOW	PARKING BRAKE
BLUE	SUSPENSION
BLACK	ACCESSORIES

NOTE #1 : OPTION OUTPUT RETARDER ON TRANSMISSION.  
 #2 : POWERED-ASSISTED CLUTCH.  
 #3 : N.O. =NORMALY OPEN  
 N.C. =NORMALY CLOSE

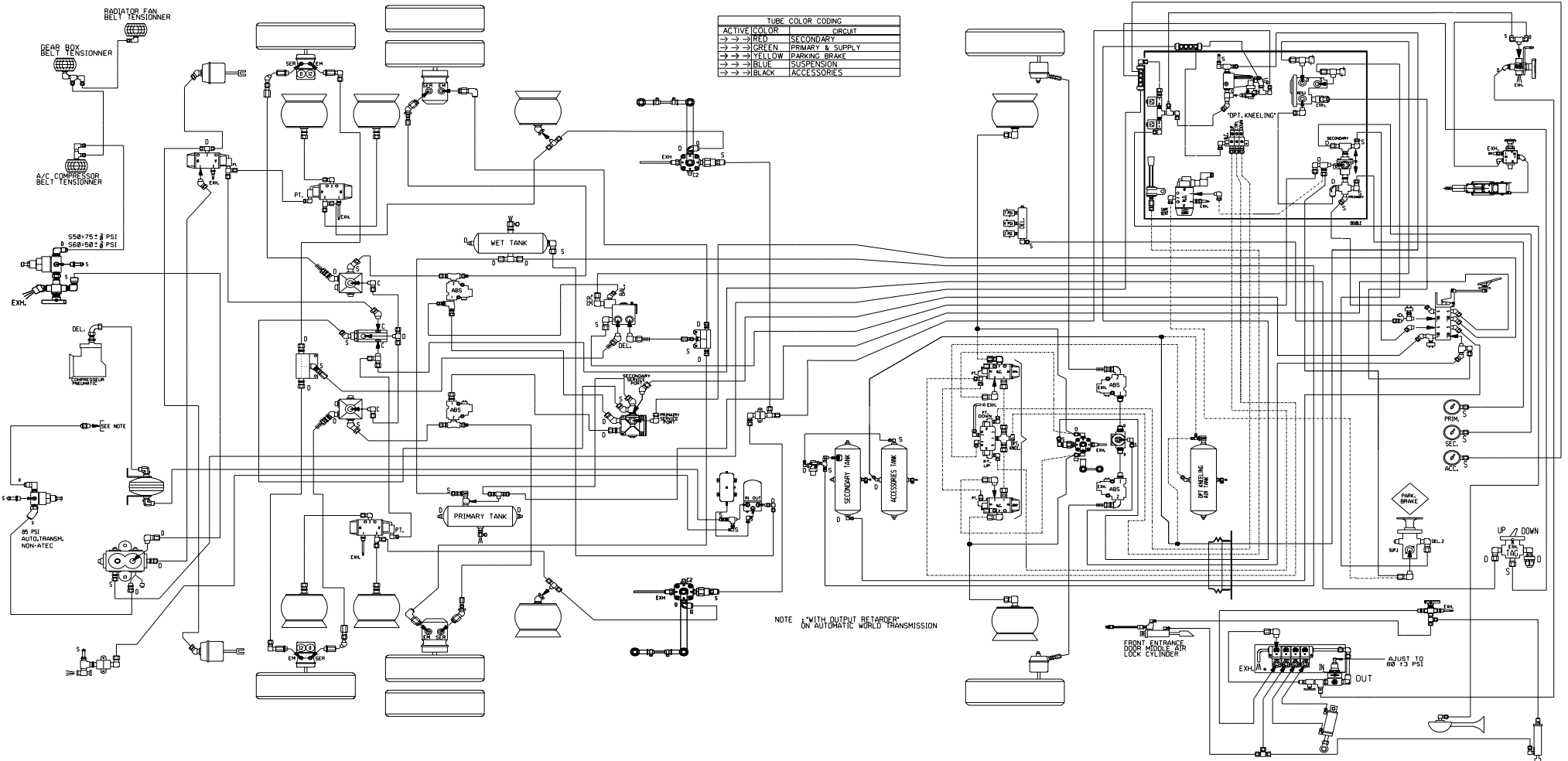
#D140261 P.1 REV. B  
 XL2 40' & 45' COACH  
 WITH FRONT BEAM AXLE

COLOR CODE FOR TUBES	
COLOR	CIRCUIT
RED	SECONDARY
GREEN	PRIMARY & SUPPLY
YELLOW	PARKING BRAKE
BLUE	SUSPENSION
BLACK	ACCESSORIES



NOTE #1: OPTION OUTPUT RETARDER ON TRANSMISSION.  
 #2: POWERED-ASSISTED CLUTCH.  
 #3: N.O. - NORMALY OPEN  
 N.C. - NORMALY CLOSE

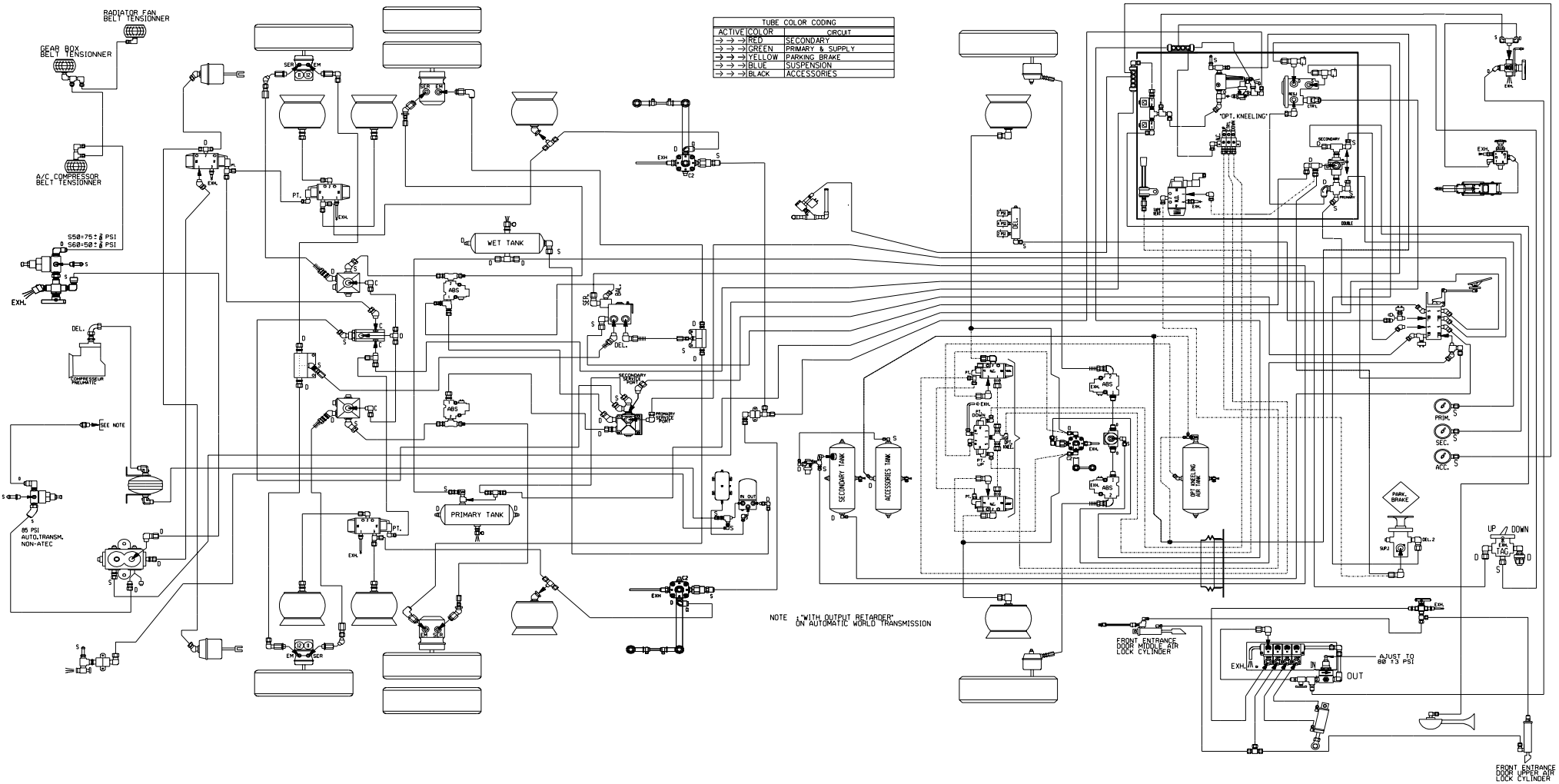
#D140261 P.1 REV. C  
 XL2 40 & 45 COACH  
 WITH FRONT BEAM AXLE



TUBE COLOR CODING	
ACTIVE COLOR	CIRCUIT
→ → → RED	SECONDARY
→ → → GREEN	PRIMARY & SUPPLY
→ → → YELLOW	PARKING BRAKE
→ → → BLUE	SUSPENSION
→ → → BLACK	ACCESSORIES

NOTE \*WITH OUTPUT RETARDER\*  
ON AUTOMATIC WORLD TRANSMISSION

\*D140261 P.1 REV.F  
COACH XL2 45'  
WITH FRONT BEAM AXLE

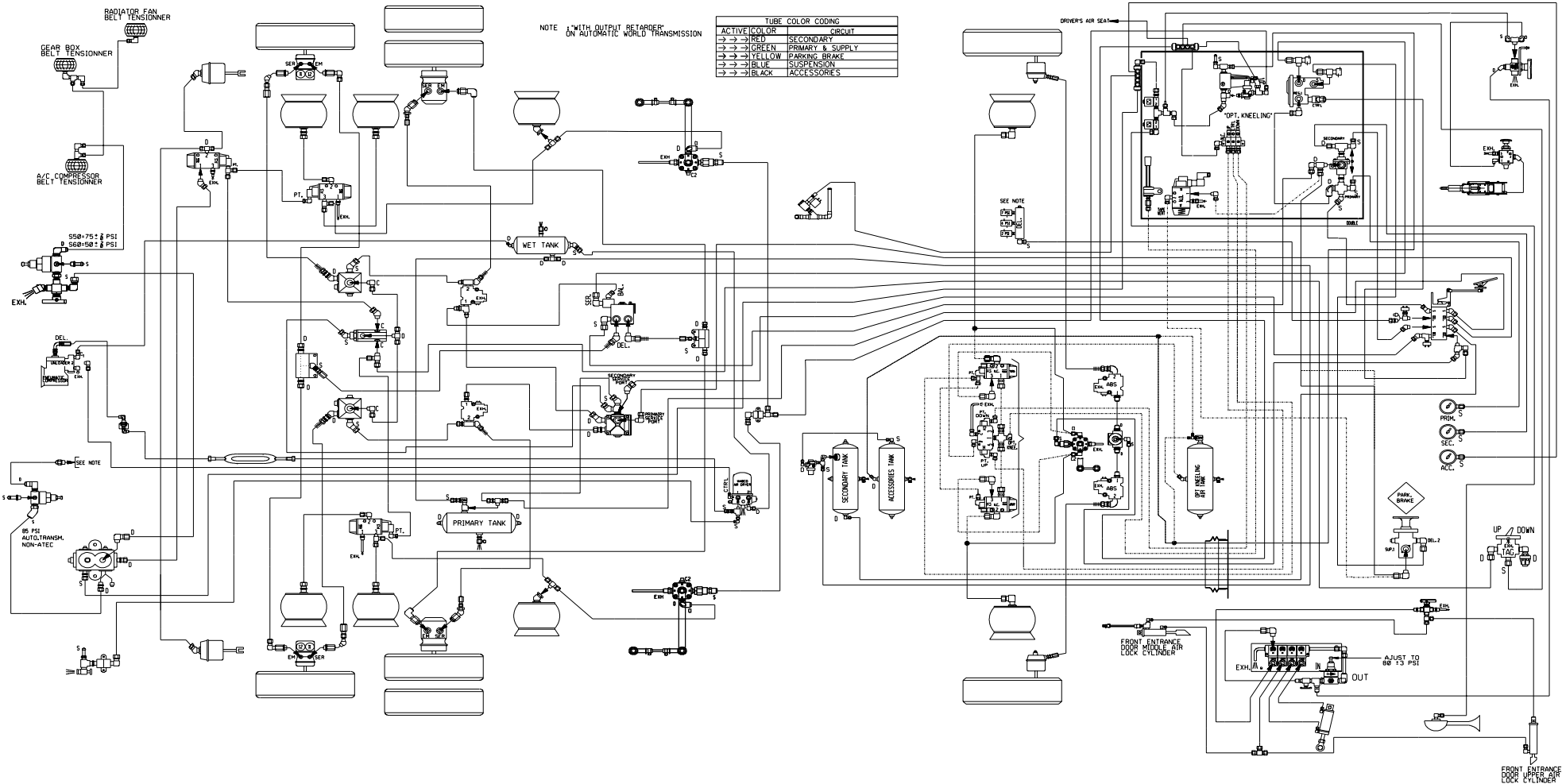


ACTIVE COLOR	CIRCUIT
→ →	INLET SECONDARY
→ →	GREEN PRIMARY & SUPPLY
→ →	YELLOW PARKING BRAKE
→ →	BLUE SUSPENSION
→ →	BLACK ACCESSORIES

DATE: 2001-12

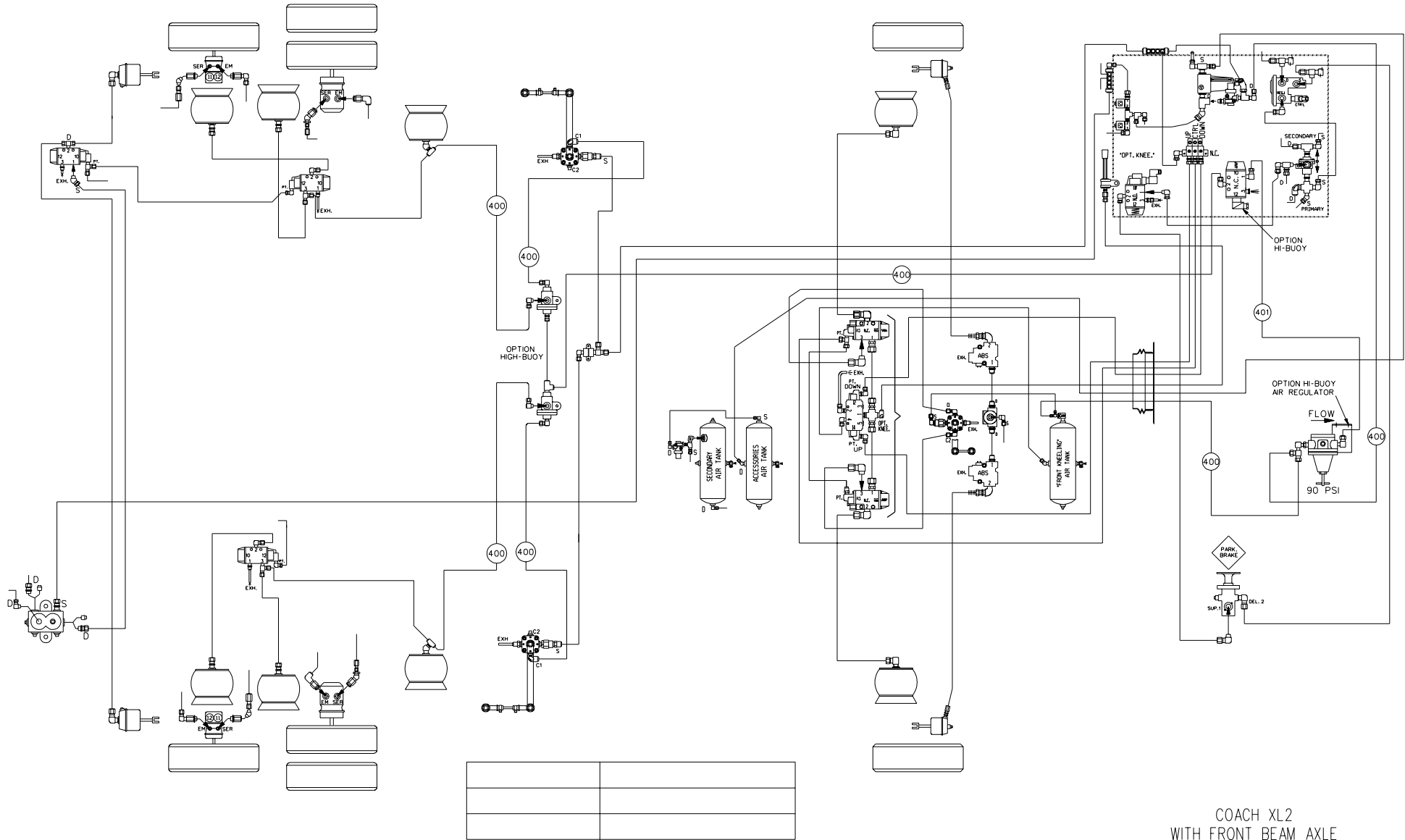
\*D140261 P.1 REV.G  
 COACH XL 2 45'  
 WITH FRONT BEAM AXLE

FRONT ENTRANCE  
 LOCK CYLINDER



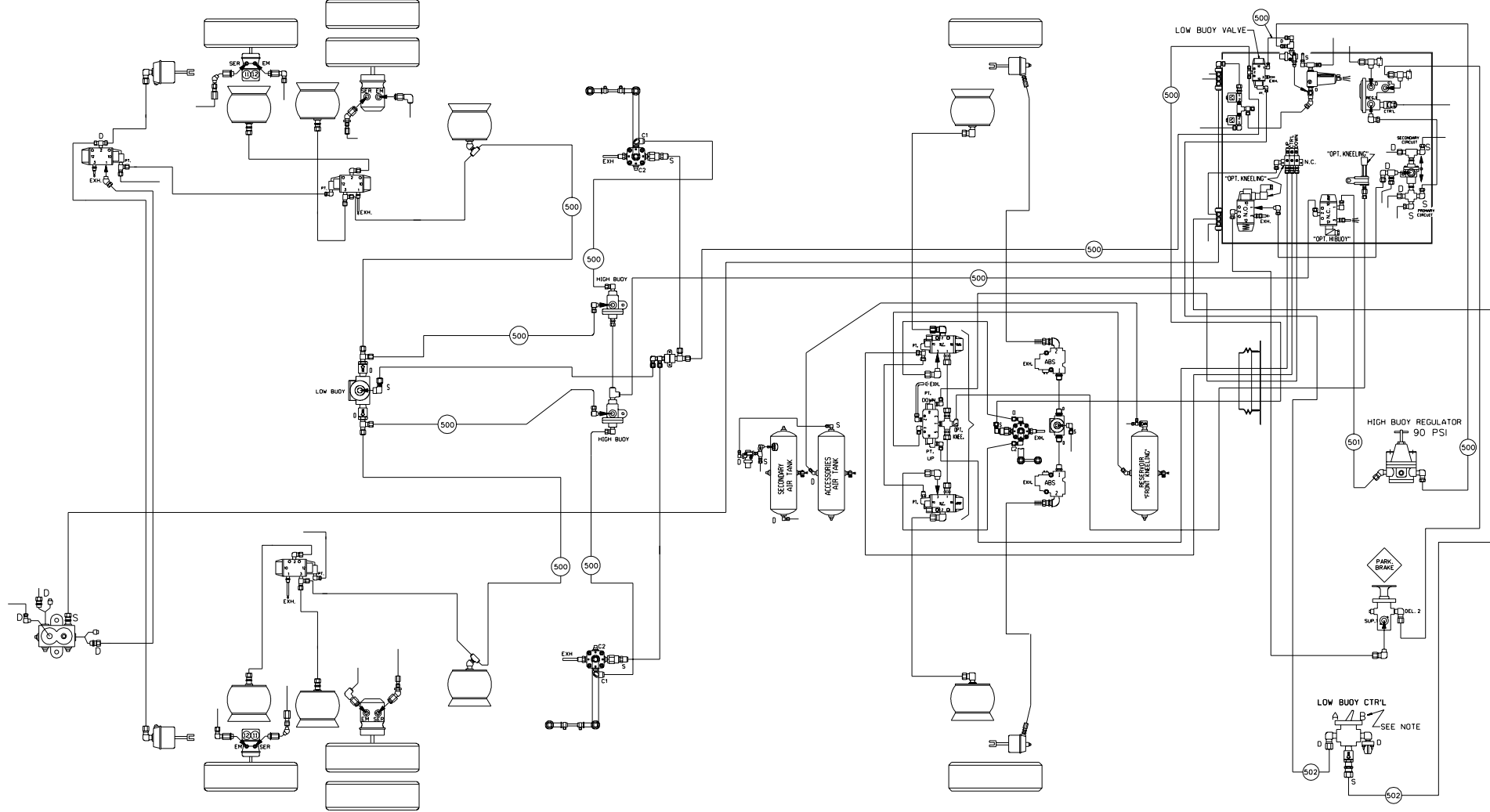
DATE: 2002-05

•D140261 P.1 REV.H  
COACH XL2 4.5'  
WITH FRONT BEAM AXLE



DATE=2002/03

COACH XL2  
 WITH FRONT BEAM AXLE  
 WITH FRONT KNEELING AND HIGH-BUOY COMBINATION  
 D140261 P.4 REV.B



**NOTE :**

CONTROL VALVE OPT. "LOW-BUOY", "A" OR "B" SETTING:

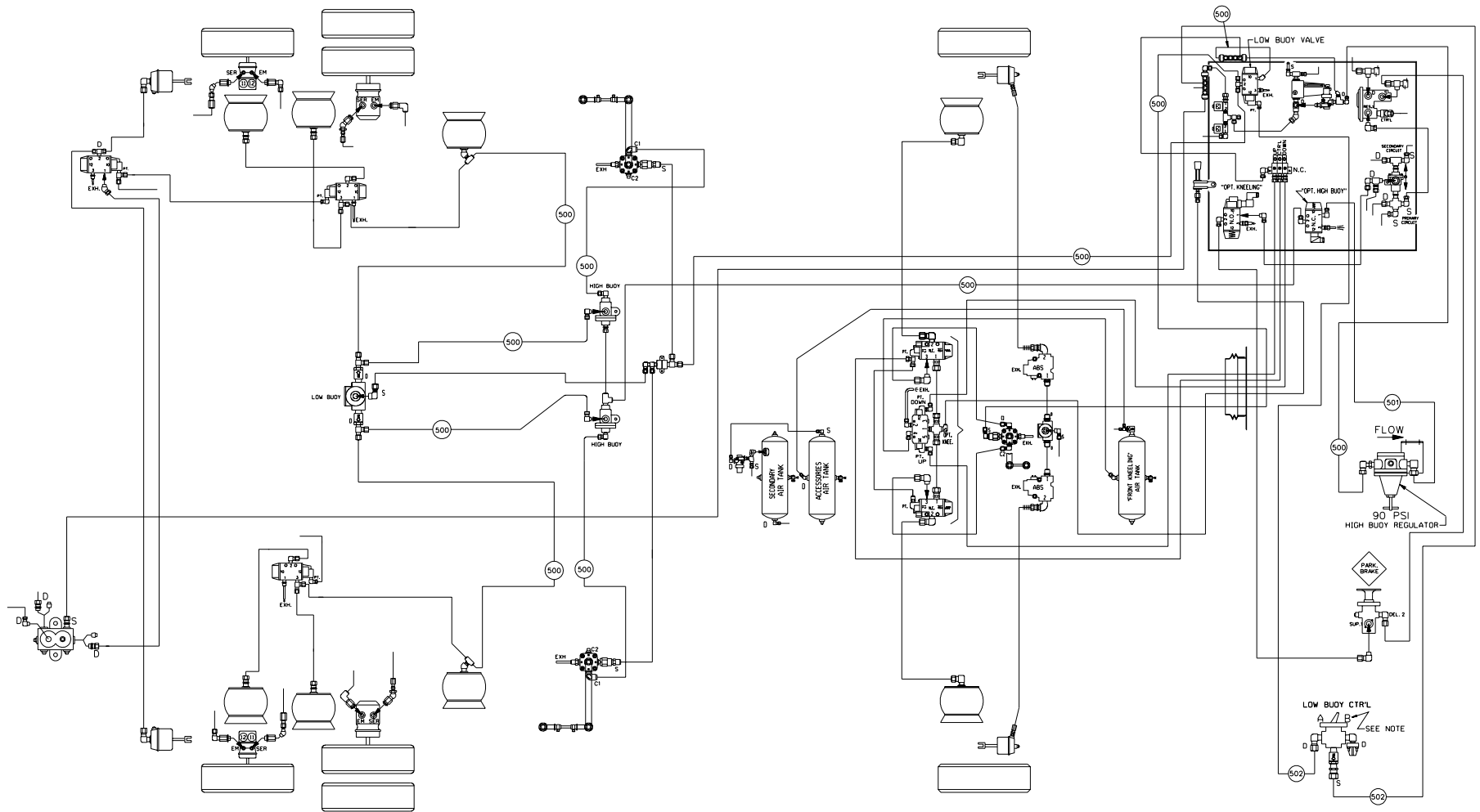
POSITION "A": VALVE OPEN .  
AIR FLOW BETWEEN SUPPLY (S) AND DELIVERY (D), LOW-BUOY IS NOT IN FUNCTION.

POSITION "B": VALVE CLOSED .  
AIR DOES NOT FLOW BETWEEN SUPPLY (S) AND DELIVERY (D), LOW-BUOY IS IN FUNCTION.

BASIC ON D140261 P.1 , COMPLETE DIAGRAM

ITEM	DESCRIPTION
500	3/8" O.D. BLUE TUBE
501	1/2" O.D. BLUE TUBE
502	1/4" O.D. BLUE TUBE

D140261 P.5 REV.A  
 COACH XL2 45'  
 FRONT BEAM AXLE SUSPENSION  
 WITH OPTION FRONT KNEELING  
 LOW-BUOY AND HIGH-BUOY COMBINATION



**NOTE :**

CONTROL VALVE OPT. "LOW-BUOY", "A" OR "B" SETTING:

POSITION "A": VALVE OPEN .  
AIR FLOW BETWEEN SUPPLY (S) AND  
DELIVERY (D), LOW-BUOY IS NOT IN FUNCTION.

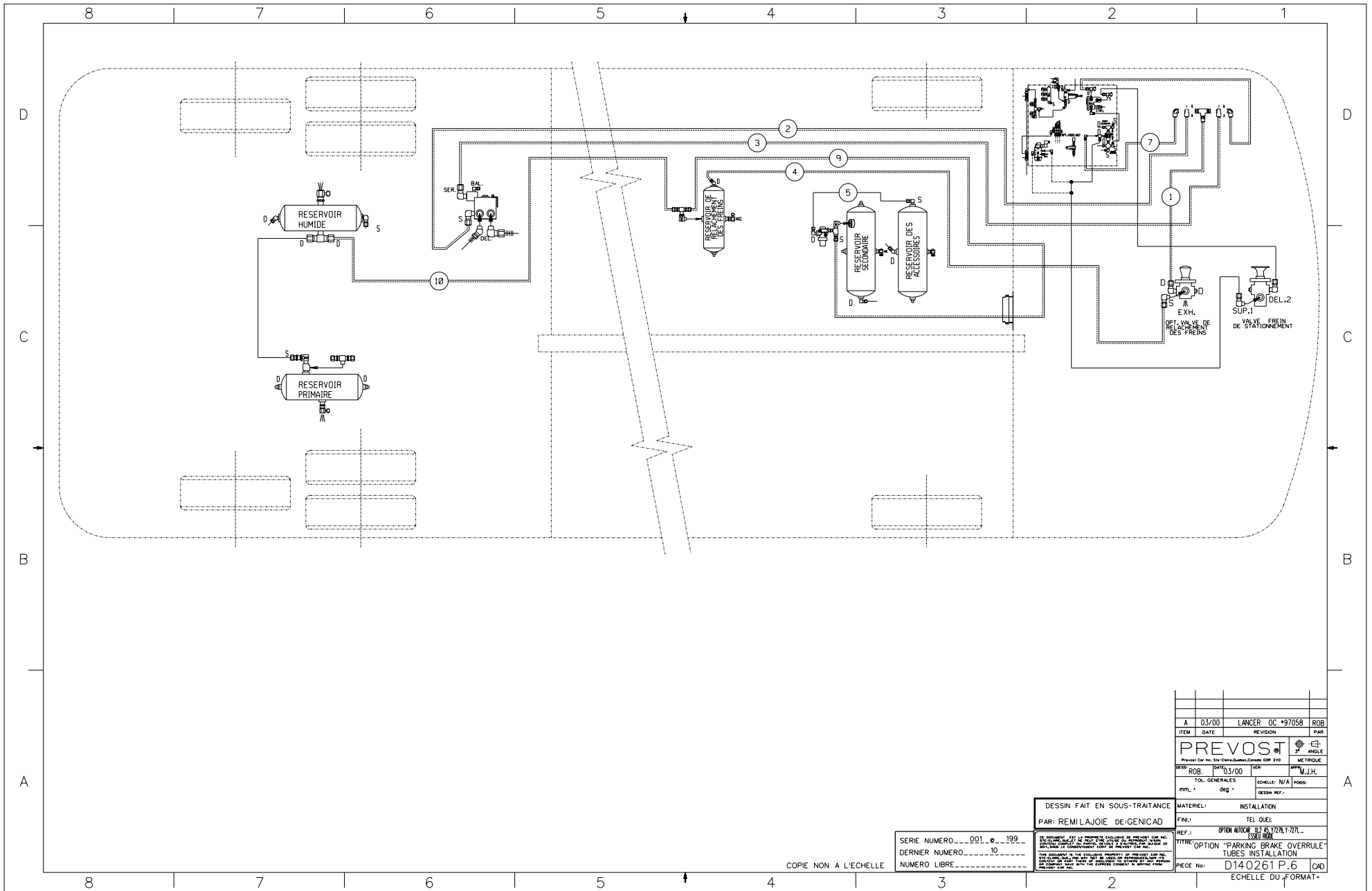
POSITION "B": VALVE CLOSED .  
AIR DOES NOT FLOW BETWEEN SUPPLY (S)  
AND DELIVERY (D), LOW-BUOY IS IN FUNCTION.

ITEM	DESCRIPTION
500	3/8" O.D. BLUE TUBE
501	1/2" O.D. BLUE TUBE
502	1/4" O.D. BLUE TUBE

COACH XL2 45'  
FRONT BEAM AXLE SUSPENSION  
WITH OPTION FRONT KNEELING  
LOW-BUOY AND HIGH-BUOY COMBINATION

D140261 P.5 REV.B





COPIE NON A L'ECHELLE

SERIE NUMERO...001...199  
 DERNIER NUMERO...10  
 NUMERO LIBRE.....

DESSIN FAIT EN SOUS-TRAITANCE  
 PAR: REMI LAJOIE DE-GENICAD

MATERIEL: TEL QUEL  
 INSTALLATION: TEL QUEL  
 REF.: OPTION "PARKING BRAKE OVERRULE"  
 TUBES INSTALLATION  
 ECHELLE: N/A  
 POISS: DESSIN REF.

ITEM	DATE	REVISION	PAR
A	03/00	LANCER OC *97058	ROB
PREVOS			ANGLE
Projet Car No. 514-014-0000-0000-0000-0000			METRIQUE
DESIN	ROB	03/00	PAR M.J.H.
TOL. GENERALES		ECHELLE: N/A	POISS:
MIL. *		050 *	DESSIN REF.:
MATERIEL:		INSTALLATION:	
PAR: REMI LAJOIE DE-GENICAD		TEL QUEL	
REF.:		OPTION "PARKING BRAKE OVERRULE"	
TUBES INSTALLATION		ECHELLE: N/A	
PIECE No:		D14.0261 P.6	
ECHELLE DU FORMAT:		CAD	