

# Instruction Sheet

## FAN BELT GUARD INSTALLATION INSTRUCTIONS

### Material

Part no	Description	Qty
05-1417	Belt guard	1
05-1694	Chromated support	1
50-0411	Washer 1/4"	2
50-0163	Bolt 1/4-20 x 3/4"	2
50-0446	Washer 1/2"	1
50-0473	Lock washer 1/4"	2
50-2807	Bolt 1/2-20 x 2 1/4"	1
IS-9015	Fan belt guard instruction sheet	1

**NOTE:** The material can be ordered through regular channel.

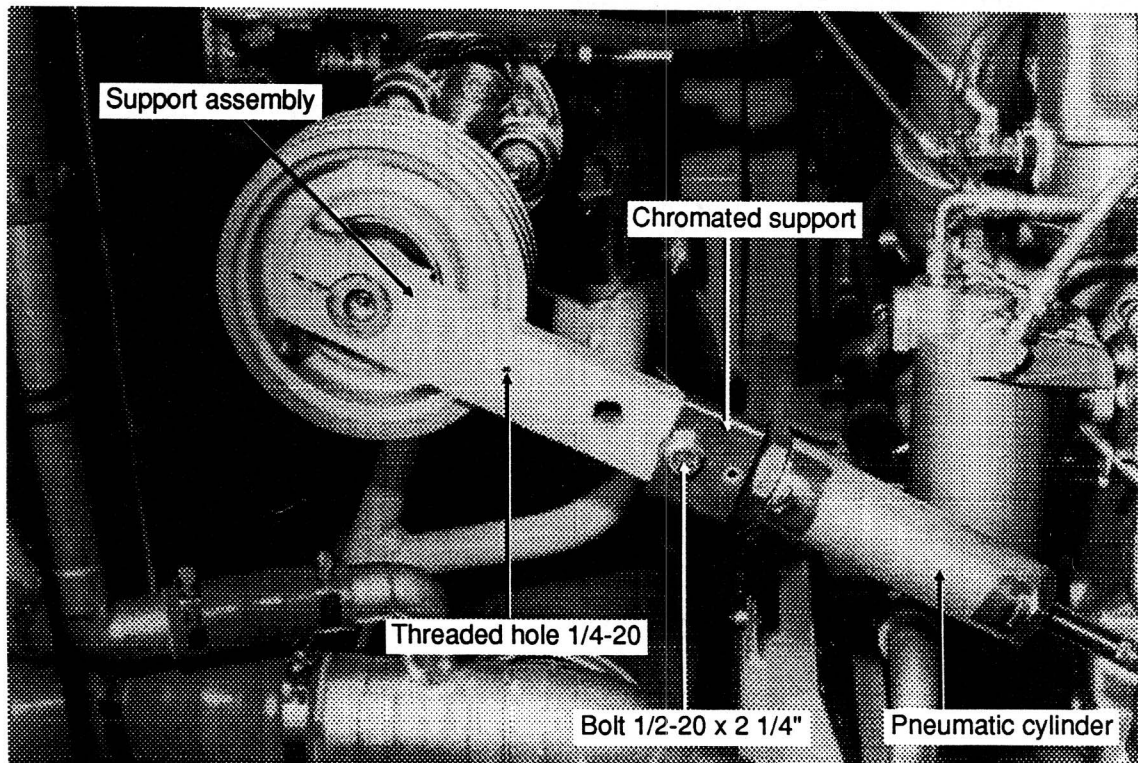
### Procedure

1. Park vehicle, apply parking brake, stop engine and set the battery main disconnect switches to the "OFF" position.
2. Open the rear doors to gain access to the engine compartment.
3. Turn cylinder air valve counterclockwise in order to reverse pressure, or loosen the two stop nuts of the mechanical tensioner and the two threaded tubes until belt pressure is relieved. Refer to figure 3.

**NOTE:** The cylinder air valve is mounted on frame over the right door in engine compartment.

**NOTE:** The threaded tubes are provided with R.H. threads on one end and L.H. threads on the other one.

4. Unscrew nut 1/2-20 and remove the bolt retaining the mechanical tensioner or the cylinder to the support assembly. Refer to figure 1.



IS901501

Figure 1

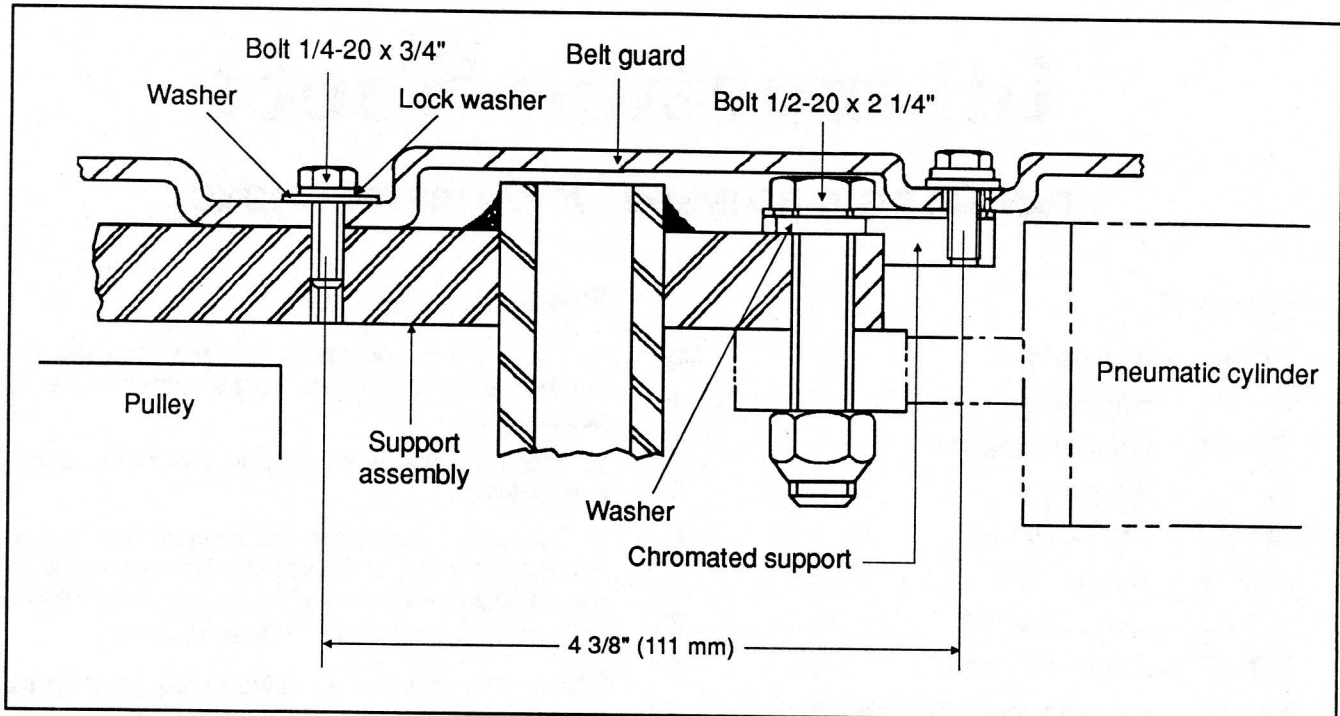


Figure 2

IS901502

5. If support assembly has no hole, mark location (4 3/8" (111 mm) from right end and in center of its width); perform hole with a 13/64" drill, chamfer then thread hole 1/4-20. Refer to figure 2.

**WARNING:** Wear safety glasses to perform this operation.

**CAUTION:** Take care not to damage fan pulley when drilling hole.

6. Install washer #50-0446 on support assembly, chromated support and tensioner or cylinder using bolt #50-2807 and nut 1/2-20; torque between 70 and 80 ft•lbs (95 and 110 N•m). Refer to figure 2.

7. Turn air valve clockwise to restore pressure in cylinder, or tighten the two threaded tubes in order to ensure an adequate belt tension. Fix tubes by means of the two stop nuts. Refer to figure 3.

**CAUTION:** Belt must depress 1/2"(13 mm) for an adequate pressure. Refer to figure 3.

8. Fix guard to support assembly using bolts #50-0163, then torque between 49 and 59 in•lbs (5,5 and 6,7 N•m) without omitting the washers and lock washers. Refer to figure 2.

9. Set battery main disconnect switches to the "ON" position.

10. Start engine and check for any friction.

11. Close engine compartment doors.

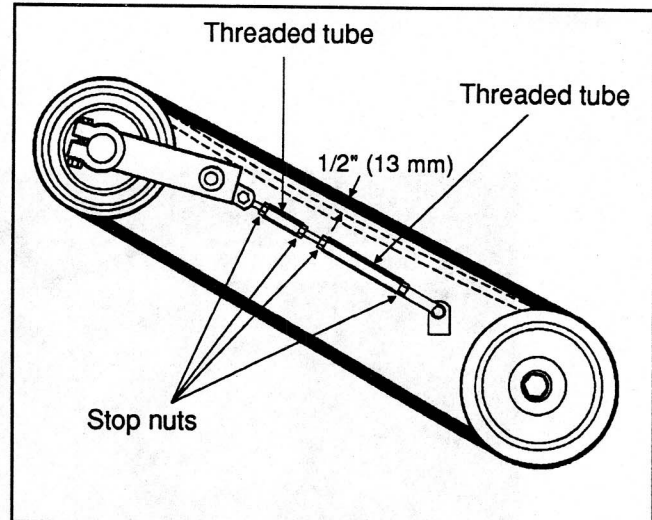


Figure 3

IS901503