

PREVOST

Instruction Sheet

IS-97133

H3-41 & H3-45 COACH SEDAN DOOR OPERATION SYSTEM VALVE REPLACEMENT.

MATERIAL

Kit #285921 includes the following part.

Part No.	Description	Qty
641448	4 Valve manifold assembly	1
064658	Solenoid electrical connection	2
641455	Pneumatic straight reducer 1/4" to 1/8"	1
IS-97133	Instruction Sheet	1
FI-97133	Feuille d'instructions	1

PROCEDURE

Warning: Park vehicle safely, apply parking brake, stop engine and set battery master switch(es) to the (OFF) position prior to working on the vehicle.

1. Open the front service compartment outside the vehicle (under operator's seat) and turn the "Emergency Door Unlatch" labeled valve in the indicated way in order to cut the air supply to the accessories lately dismantled in the procedure next steps.

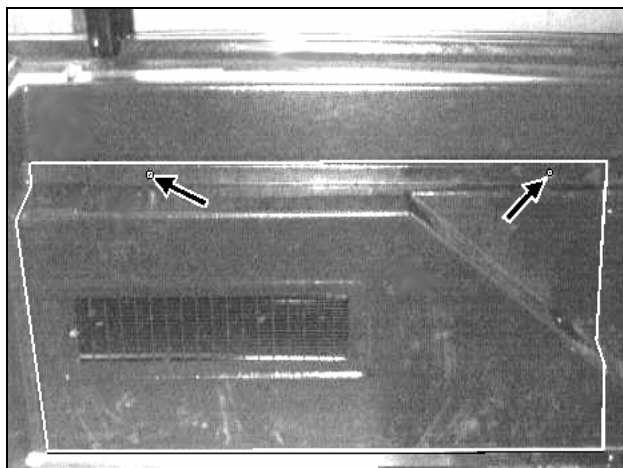


FIGURE 1a: ACCESS PANEL (EARLIER MODELS).

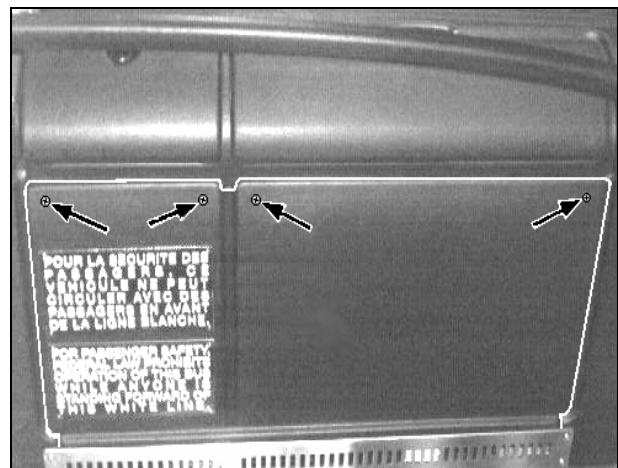


FIGURE 1b: ACCESS PANEL (LATER MODELS).

PREVOST

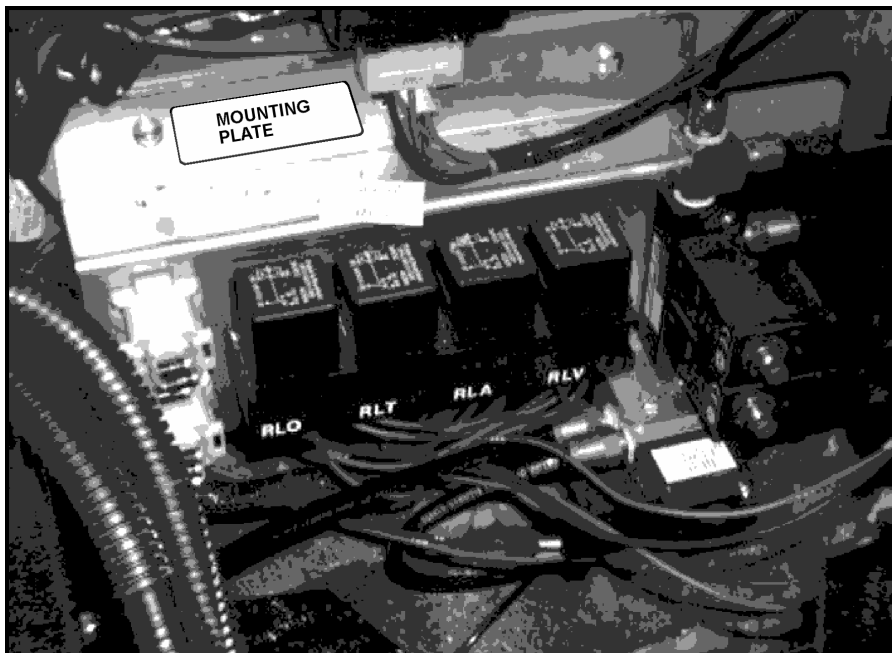


FIGURE 2: MOUNTING PLATE ACCESS.

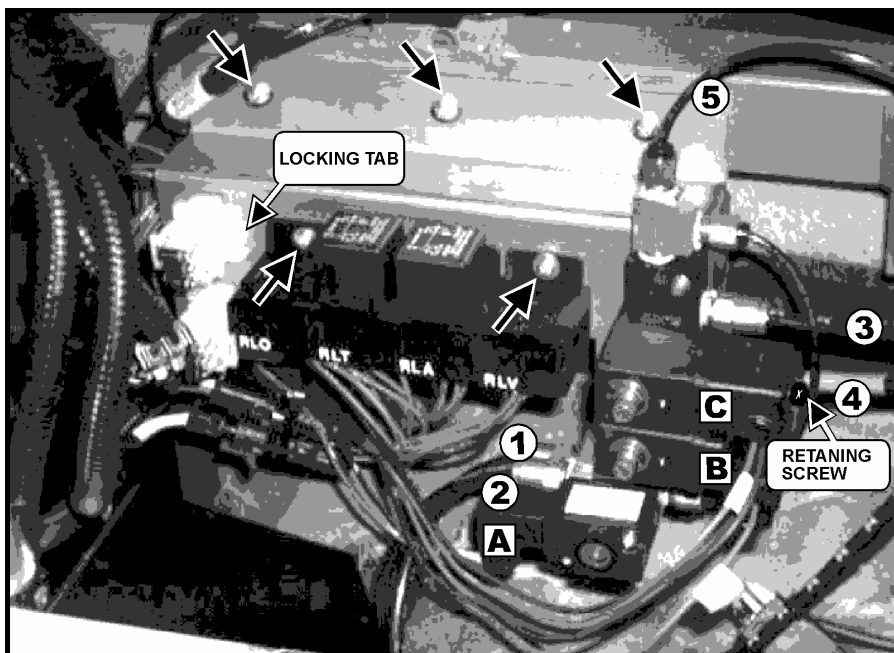


FIGURE 3: DISCONNECTION FOR REMOVING THE MOUNTING PLATE.

2. The tall finishing panel in front of the vehicle must be released. With the help of a Phillips #2 screwdriver, remove the two (2) screws which hold the finishing panel upper part, having previously removed the handrail (Fig 1a), otherwise remove the four (4) retaining screws on the top of the panel (Fig 1b), and this, depending on the vehicle year of manufacturing. Pull the panel upward to release it. Provide proper lighting prior to working in the compartment. (Fig. 2).
3. Extract the two relays which sit on the two end of the four units row by pulling them upward, to provide access to relay row mounting screws. (Fig 2) (Fig. 3).

-
4. Label all the pressure hoses as indicated (1 to 5) on figure #3. Disconnect all these hoses by pressing the fitting ring while pulling out the hose for every connection.
 5. Label all the solenoid connections as indicated (A,B,C) on figure #3. Unscrew the retaining screws on the top of each connection using a Phillips #1 short screwdriver and disconnect all these connections.
 6. Unscrew the relay row two (2) mounting screws taking care not to drop them in the compartment (Fig 3).
 7. With the help of a flat-tipped long screwdriver, push the white plugs locking tabs through the mounting plate in order to extract them from the mounting plate (Fig. 3).
 8. Remove the mounting plate three (3) retaining screws, always taking care not to drop them and then take the mounting plate out of the compartment (Fig. 3).

Note: Cut every embarrassing Tye Rap which may bother to the operations keeping in mind to replace each one of them after the installation procedure.

9. Unscrew the existing 2-valve manifold assembly. Remove the *Humphrey* valve two (2) mounting nuts and screws (Fig. 4).
10. With the help of a pair of pliers and a hammer, straighten the mounting plate folded part originally made for the *Humphrey* valve mounting. Also, every welding spill out over the new manifold assembly mounting surface must be flat ground. These procedures are necessary prior to install the new *NORGREN* 4-valve manifold assembly provided in kit #285921.

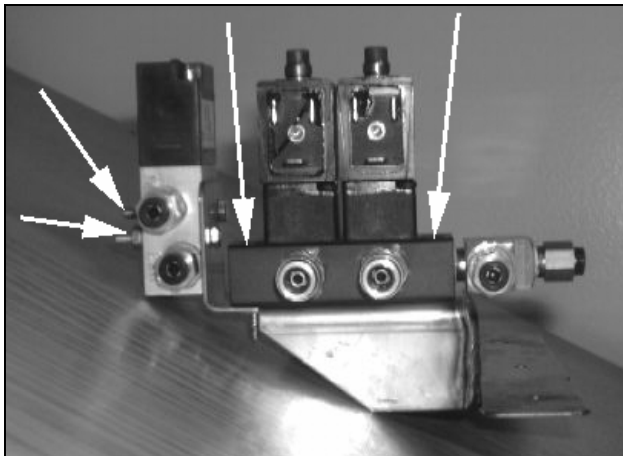


FIGURE 4: VALVE DISMOUNTING.

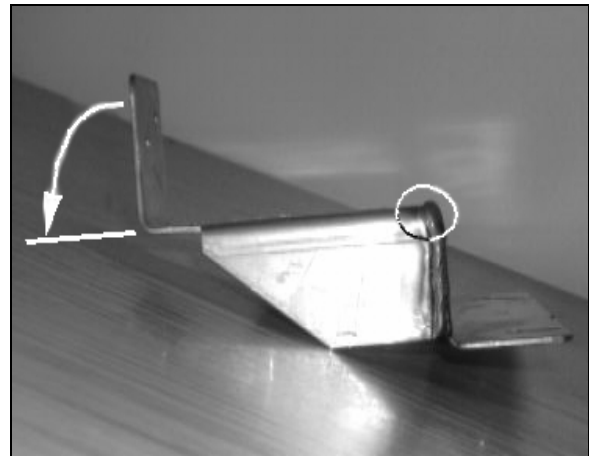


FIGURE 5: FOLDED PART STRAIGHTENING.

11. The new 4-valve manifold assembly will replace either the existing 2-valve manifold assembly and the *Humphrey* valve. This new manifold assembly will be installed on the same place where the original manifold assembly was set but two (2) new holes must be drilled through the mounting plate to set him in place. Use the new manifold assembly as a template to mark the new holes on the mounting plate.

Note: The operations #9 and #10 can be avoided by ordering the new #285903 mounting plate.

12. Install the new manifold assembly with the original 2-valve manifold assembly two (2) mounting screws.

13. Install the #691455 reducer on the new manifold assembly as indicated on figure #6.
14. Take the relay row, the two white plugs and the solenoid plugs out of the compartment prior to working on the connections. Cable ties cutting out and two leads connector (C279) disconnection is needed to pull out the relay row.

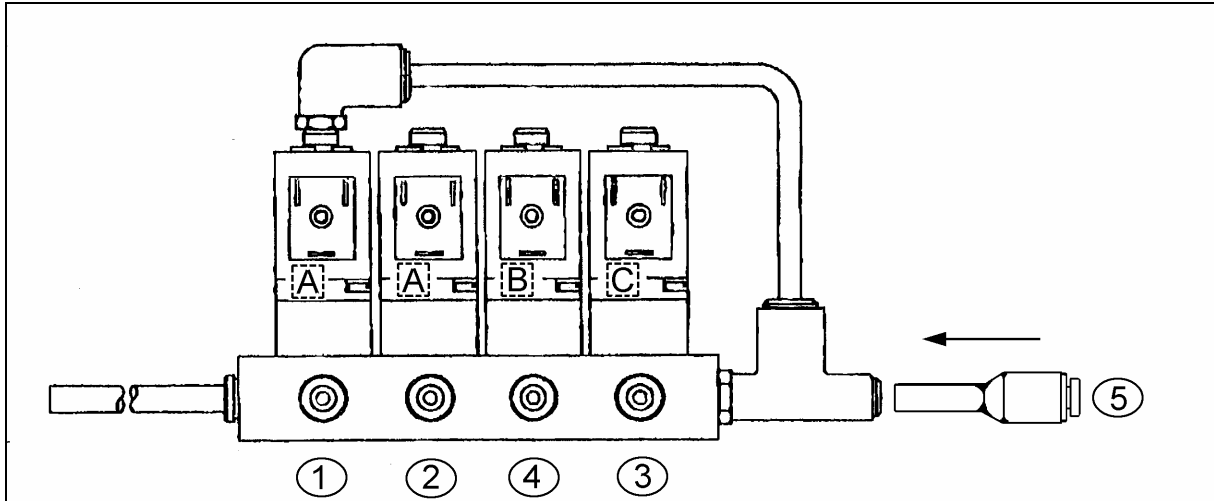


FIGURE 6: PROPER CONNECTIONS ON THE NEW MANIFOLD ASSEMBLY.

15. While taking extra care not to damage wiring, cut out enough black electrical tape to replace solenoid "A" connection joints (Fig. 7).
16. Take the solenoid "A" connection joints apart and change the existing labeled "A" connection for the two (2) connections included in the kit #285921 plugging them in parallel and using the original connection and insulating method applied on connection joints. The two (2) new connections will bear the "A" indication.

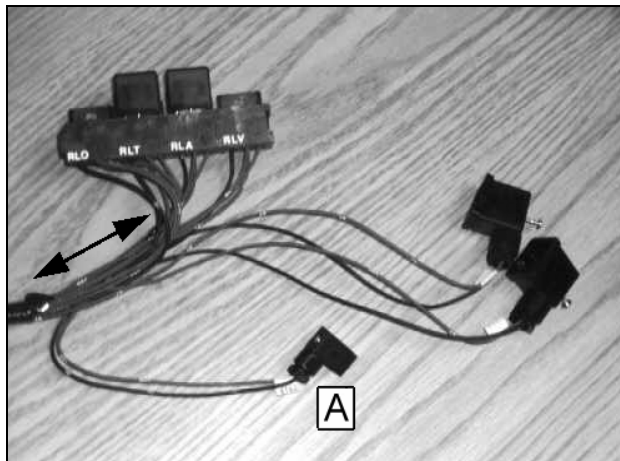


FIGURE 7: RELEASING OF THE CONNECTION JOINTS.



FIGURE 8: CONNECTION JOINTS TO TAKE APART.

17. Wrap the solenoid connection wiring as it was originally with black electrical tape. Reinstall the complete wiring with new Cable ties where applied and plug the two (2) leads connector (C279) previously disconnected.

-
18. Install the two white plugs through the mounting plate and secure the mounting plate with the three (3) original screws.
 19. Connect the air pressure hose and solenoid plugs with their retaining screws following the indications illustrated on figure #6.
 20. Secure the relay row with the two original screws and reinstall the two relays removed previously.
 21. Set the sedan door system in operating order by turning back the "Emergency Door Unlatch" valve in the vehicle front service compartment before proceeding to a sedan door operation test. After this test, the finishing panel can then be installed.