



PREVOST

ENREGISTRÉ - REGISTERED
ISO 9001 & ISO 14001

MAINTENANCE INFORMATION Mi00-18



DATE : September 2000	SECTION : 18 - Body
SUBJECT : FRONT LICENSE PLATE BRACKET	

Important Notice: This modification is recommended by Prévost Car to increase your vehicle's performance. Note that no reimbursement will be awarded for carrying out this modification.

APPLICATION

Model	VIN
XLII coaches Model Year : 2000 - 2001	From 2PCX33491Y1027031 up to 2PCX3349711027377 incl.

DESCRIPTION

A license plate bracket able to display two license plates is available for installation on the front bumper of XLII coaches.

MATERIAL

Part No.	Description	Qty
410817	License plate frame	1
500589	Molded rubber gasket nut, M4-0.7 x 13.5	8
502809	Screw, M4-0.7 x 30	8
410818	Plastic extrusion	2
504587	Flat head sliding bolt	8
502637	Washer, flat, SS, 0.200 x 0.437 x 0.037	8
502570	Washer, lock, SS, 6.1 x 11.8 x 1.6	8
500787	Nut, hex, SS, 10-24	8
507333	Boot, vinyl	8

Note : Material can be obtained through regular channels.

PROCEDURE

Warning : Park vehicle safely, apply parking brake, stop engine and set battery master switch(es) to the OFF position prior to working on the vehicle.

1. Refer to figure 1 to choose a location for the bracket;
2. Using the license plate frame (#410817), as a template, drill eight small pilot holes in the front bumper;

3. Refer to figure 1 for parts assembly;
4. Remove the frame and enlarge the holes in the bumper to 11/32 inch (9 mm).
5. Insert the eight molded rubber gasket nuts (#500589), in the holes;
6. Slide four flat-head sliding bolts (#504587), in the channel of each extrusion;
7. Place the frame and plastic extrusions as shown. Fasten in place using the eight screws (#502809);
8. Insert the flat washer (#502637) over the flat-head sliding bolts;
9. Place the license plate(s) and fasten using the lock-washers (#502570) and nuts (#500787);
10. Place vinyl boots (507333), over the protruding bolts.

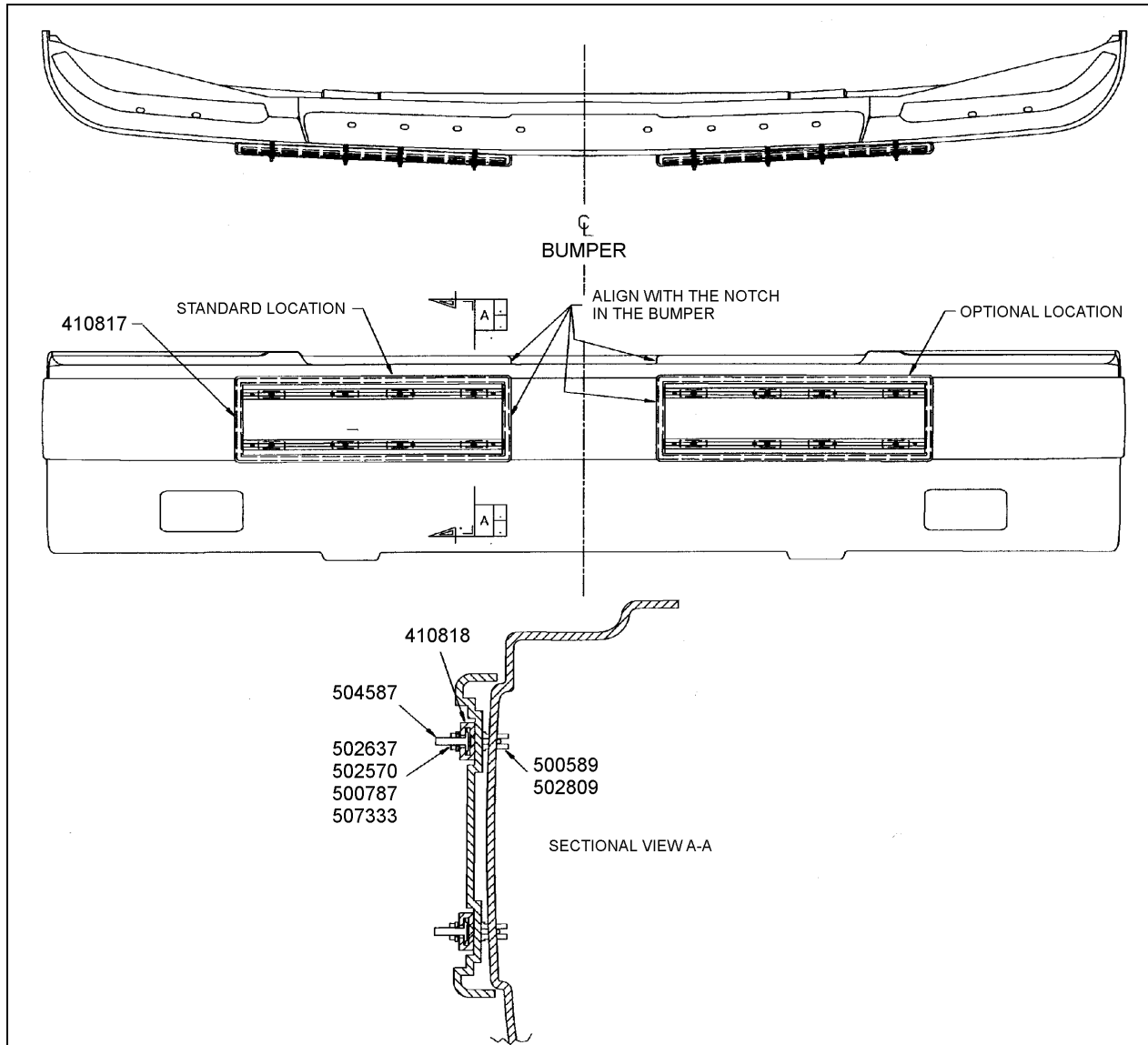


FIGURE 1: LICENSE PLATE BRACKET INSTALLATION ON FRONT BUMPER

18436

Waste disposal :

Discard according to applicable environmental regulations (Municipal/State[Prov.]/ Federal)