

PREVOST

ENREGISTRÉ - REGISTERED
ISO 9001 & ISO 14001

**MAINTENANCE
INFORMATION**


Mi03-22



DATE :	September 2003	SECTION :	18 - Body
SUBJECT :	WINDSHIELD INSTALLATION USING DRY FITTING		

Important Notice: This modification is recommended by Prévost Car to increase your vehicle's performance. Note that no reimbursement will be awarded for carrying out this modification.

APPLICATION

Model	VIN	
XL2-45 Coaches Model Year: 2000 - 2002	From 2PCX33490Y1027134 up to 2PCX3349821027910 incl.	
MTH XL2-40, XL2-45 & Entertainer Model Year : 2000 - 2002	From 2PCW33499Y1027046 up to 2PCW3349921027913 incl.	

DESCRIPTION

On the above-mentioned vehicles, when replacing a damaged windshield, a dry fitting installation is available making the use of sealing product unnecessary. Both windshield sections must then be replaced as well as center post and rubber seal.

MATERIAL REQUIRED FOR COACHES

Part No	Description	Qty
293393	Seal, Rubber	1
300475	L. H. Side Section, Windshield	1
300476	R. H. Side Section, Windshield	1
293689	L. H. Side Portion, Center Post	1
293070	R. H. Side Portion, Center Post	1

Note: Material can be obtained through regular channels.

MATERIAL REQUIRED FOR 86" MTH EQUIPPED WITH LARGE WINDSHIELD

Part No	Description	Qty
293393	Seal, Rubber	1
300489	L. H. Side Section, Windshield	1
300490	R. H. Side Section, Windshield	1
293689	L. H. Side Portion, Center Post	1
293070	R. H. Side Portion, Center Post	1

Note: Material can be obtained through regular channels.

MATERIAL REQUIRED FOR 86" MTH EQUIPPED WITH SMALL WINDSHIELD

Part No	Description	Qty
293641	Seal, Rubber	1
300492	L. H. Side Section, Windshield	1
300491	R. H. Side Section, Windshield	1
293090	L. H. Side Portion, Center Post	1
293091	R. H. Side Portion, Center Post	1

Note: Material can be obtained through regular channels.

MATERIAL REQUIRED FOR 89" MTH ENTERTAINER

Part No	Description	Qty
293393	Seal, Rubber	1
300475	L. H. Side Section, Windshield	1
300476	R. H. Side Section, Windshield	1
293689	L. H. Side Portion, Center Post	1
293070	R. H. Side Portion, Center Post	1

Note: Material can be obtained through regular channels.

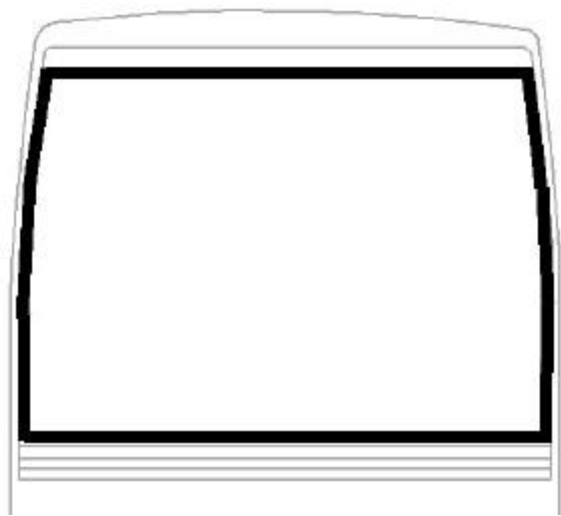
PROCEDURE

Warning: Park vehicle safely, apply parking brake, stop engine and set battery master switch(es) to the OFF position prior to working on the vehicle.

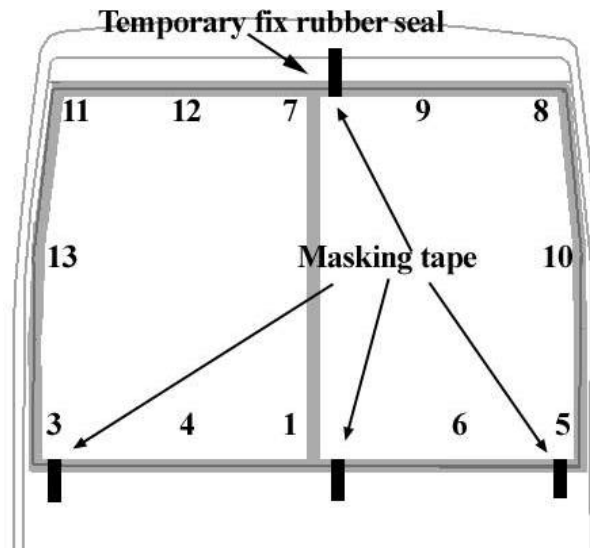
WINDSHIELD INSTALLATION USING DRY FITTING

1. Make sure that proper windshield is in hand then check the condition of both windshield sections as well as rubber seal before starting the installation.

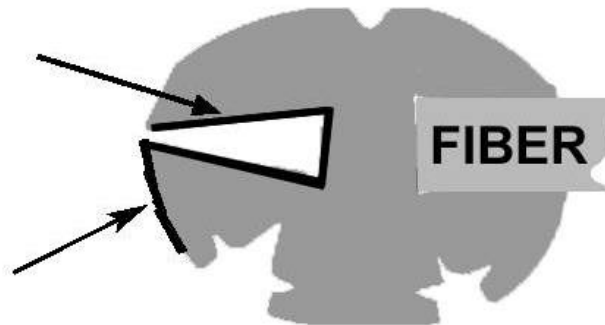
2. Clean windshield opening frame where the rubber seal will be installed using alcohol (680536).



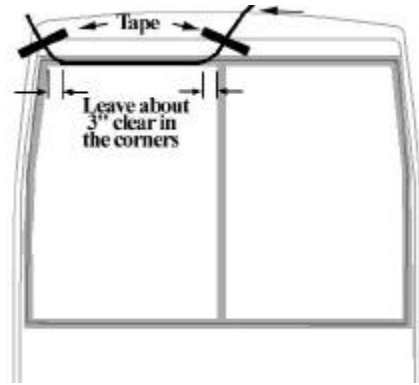
3. Install rubber seal, large side at bottom. Install as per following sequence and temporary fix seal in place using masking tape.



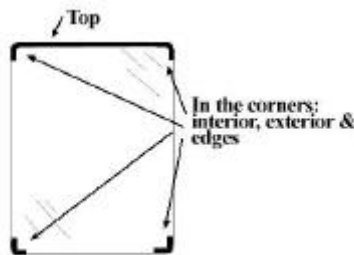
4. Make sure that rubber seal is properly positioned in the corners down to the bottom of the groove. Spray soapy water or "Clear Lube" Lubricant (800356) into the rubber seal groove on windshield side, especially in the corners.



5. Insert a rope into the rubber seal groove to facilitate the installation of windshield R.H. side section.



- Spray some soapy water or "Clear Lube" Lubricant onto the windshield section.



- Take windshield section down pass the rubber seal.



- Rise up then tilt the windshield section, insert the first corner. Push windshield section towards the left, it must be well inserted in the bottom of rubber seal groove.



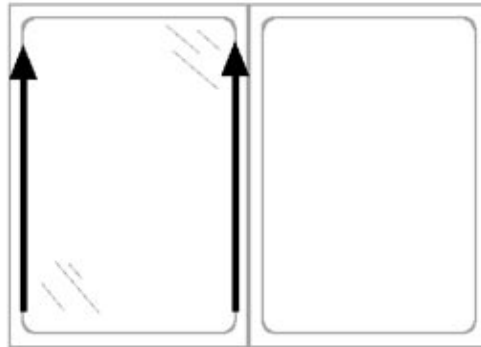
- Insert lower part of windshield section using the plastic spatula.



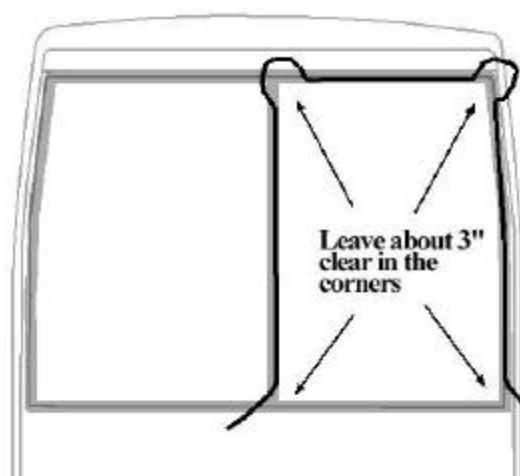
10. Make sure that lower edge of windshield section is well inserted into the bottom of rubber seal groove.



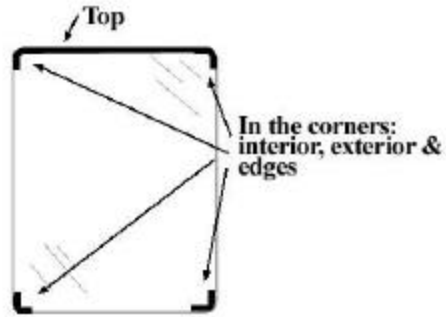
11. While maintaining a pressure onto the windshield section, gradually move the rubber seal lip aside to insert both sides of windshield section into the groove.



12. Rise the rubber seal lip by pulling on the rope, maintain a slight pressure onto the windshield section while inserting into the groove.
13. Insert the outside corner using the plastic spatula.
14. Push against the windshield section to ensure that it is well inserted into the bottom of rubber seal groove.
15. If the windshield does not follow the curve of the face, push the windshield section in from the outside.
16. Insert the central corner using the plastic spatula.
17. Insert a rope into the rubber seal groove to facilitate the installation of windshield L.H. side section.



18. Spray some soapy water or "Clear Lube" Lubricant onto the windshield section.



19. Take windshield section down pass the rubber seal.



20. Rise up then tilt the windshield section, insert the first corner then the center of windshield.



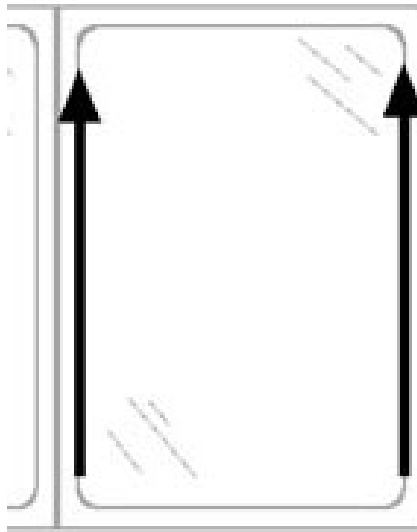
21. Insert lower part of windshield section using the plastic spatula. Push the windshield section in from the outside.



22. Make sure that lower edge of windshield section is well inserted in the bottom of rubber seal groove.



23. Maintain a pressure onto the windshield section. While pulling the rope, gradually move the rubber seal aside to insert both sides of windshield section into the groove.

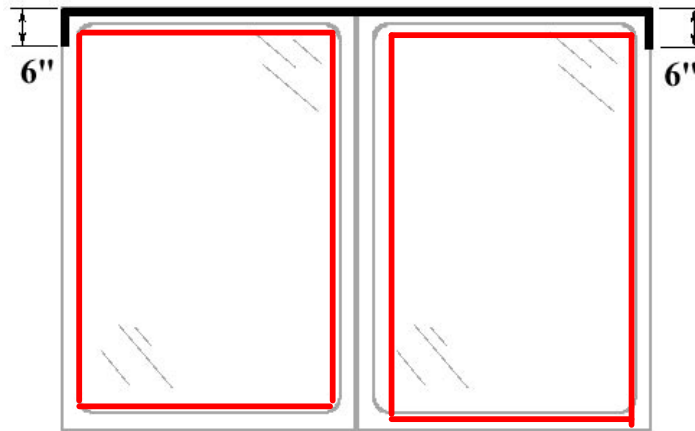


24. Rise the top part of rubber seal lip by pulling on the rope, maintain a slight pressure onto the windshield section while inserting into the groove.
25. Insert the central corner using the plastic spatula.
26. Insert the outside corner using the plastic spatula.
27. If the windshield does not follow the curve of the face, push the windshield section in from the outside.
28. Adjust rubber seal center portion between the windshield two sections so as to form a straight and perpendicular line with regards to the seal lower part.

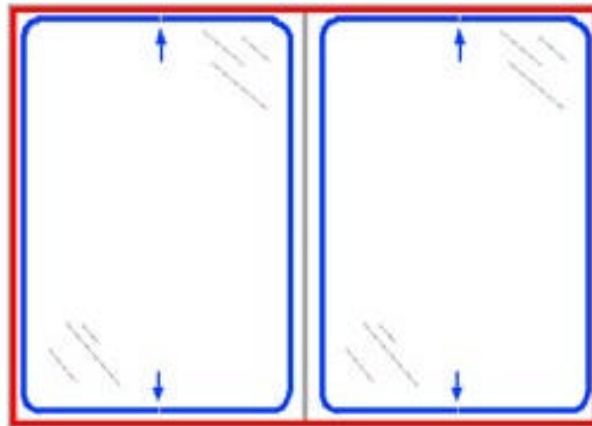


29. Clean the inside of both windshield sections.
30. In order to temporarily fix the two-part center post, partly tighten the 4 screws (the part with the welded nuts goes to the right).
31. Hold the two-part center post in position using a "C" clamp. Make sure that rubber seal center portion is properly installed between the two parts and that the parts are centered with reference to the marks.

32. Perform final tightening of 4 screws.
33. Apply at the top of windshield, from the outside, some Sika 205 cleaner between fiberglass and rubber seal, afterwards; apply a bead of Sika 221 black.



34. Apply some "Clear Lube" Lubricant (800356) onto both windshield sections between glass and rubber seal.
35. Spray some soapy water or "Clear Lube" Lubricant into the rubber seal groove where the locking strip will be installed.
36. Insert the exterior locking strip. Insert on end of the locking strip using the special insertion tool. Cut the corners at a 45° angle. Gradually insert the locking strip vertical parts always working from top to bottom.

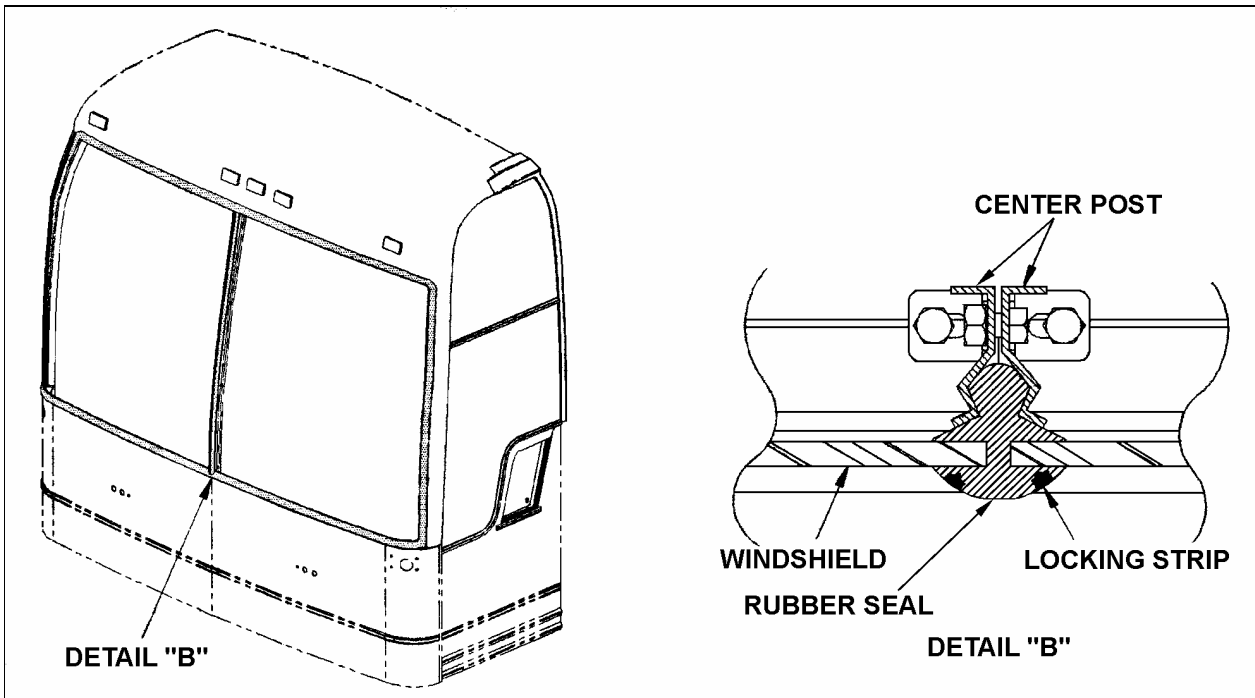
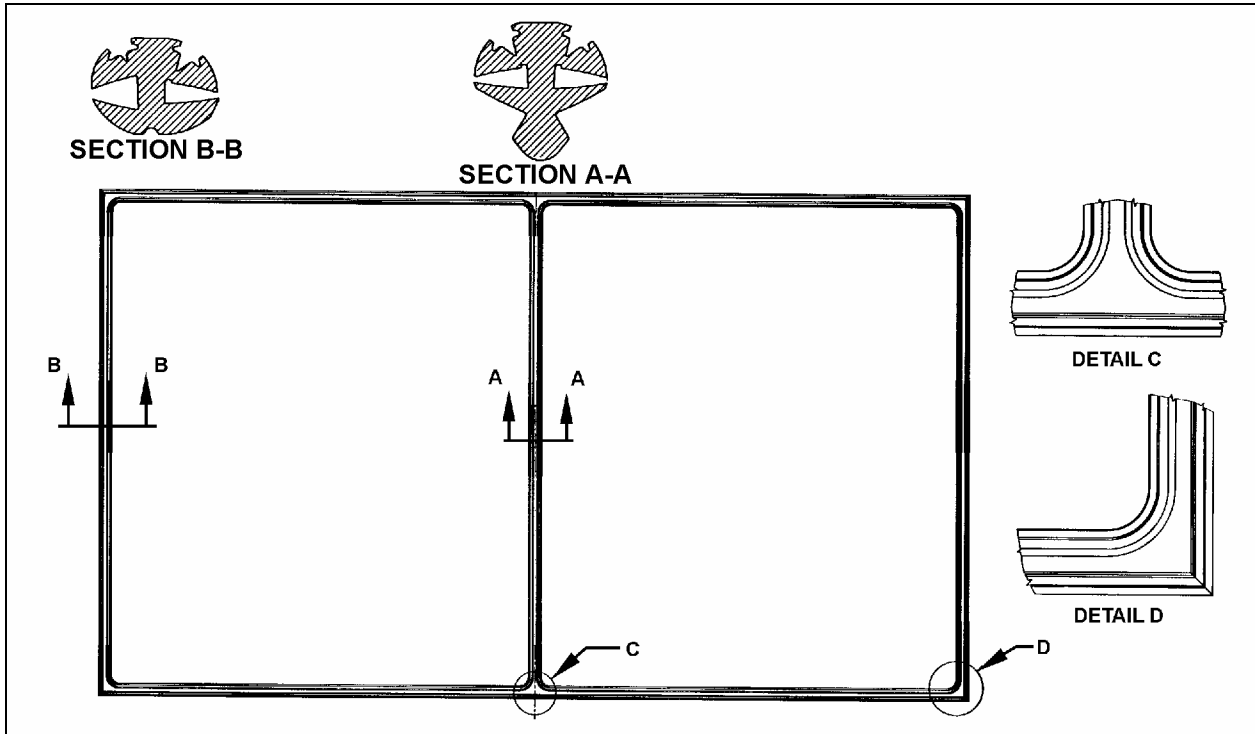


37. Insert the interior locking strip. Gradually insert the locking strip vertical parts always working from top to bottom. Junction of all ends must be done at the windshield center, top and bottom part.
38. Clean the rubber seal perimeter using Sika 208 when excess of Sika 221 is present.
39. Clean the outside of both windshield sections.

POST-INSTALLATION VERIFICATION

- ? Both windshield sections must follow exactly the curve of the face
- ? The corners must not be turned up
- ? The locking strips must be properly installed

? The rubber seal center portion located between the windshield two sections must form a straight and perpendicular line with regards to the seal lower part



Waste disposal:

Discard according to applicable environmental regulations (Municipal/State[Prov.]/ Federal)