

PREVOST

ENREGISTRÉ - REGISTERED
ISO 9001 & ISO 14001

MAINTENANCE INFORMATION Mi07-06




DATE : MAY 2007	SECTION : 16 - Suspension
SUBJECT : NEW FIXING HARDWARE FOR THE REAR HEIGHT CONTROL VALVE LINK ROD	

IMPORTANT NOTICE

This modification is recommended by Prevost Car to increase your vehicle's performance. Note that no reimbursement will be awarded for carrying out this modification.

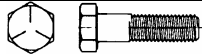

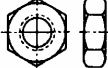
APPLICATION


Model	VIN	
H3-41, H3-45 Coaches Model Year :2004 - 2007	From 2PCH3349X41010002 up to 2PCH3349471010632 incl.	
VIP-45 MTH Model Year :2004	2PCV3349841014794 – 2PCV3349741014804 – 2PCV3349041014806 2PCV3349241014807 – 2PCV3349641014809 – 2PCV3349241014810 2PCV3349941014819 – 2PCV3349841014889 – 2PCV3349641014910 2PCV3349441014937 – 2PCV3349X41014943 – 2PCV3349441014985 2PCV3349X41014991	

DESCRIPTION

On the above-mentioned vehicles, there is a possibility that the link rod that connects the height control valve to the drive axle support frame comes apart when the vehicle is moving and thus causing the vehicle to become unstable.


MATERIAL

Part No	Description	Identification	Qty
500170	Bolt, Hexagonal Head ¼-20 x 2 G5 ZP PT		4
500913	Washer, Flat .281 x .250 x .065 ZG603		4
502819	Nut, Hexagonal Jam ¼-20 ZP		8

500454	Washer, Lock Internal Tooth .256 x .478 x .028 ZG603		4
--------	--	---	---

NOTE
Material can be obtained through regular channels.

PROCEDURE

 **DANGER**
 Park vehicle safely, apply parking brake, stop engine and set battery master switch(es) to the OFF position prior to working on the vehicle.

NOTE
On the "H" series vehicle, all fenders are easily removable for maintenance on brakes and suspension. Each rear fender has three mechanical spring-loaded holding devices fixing it to the vehicle's structure.

Rear Fender Removal

1. Push the spring type rod sideways so that the lock disengages.
2. Support or have somebody hold the fender up.
3. As in 1, repeat to release both remaining holding devices.
4. Holding the fender firmly, pull it down until the upper tabs disengage from the holding plates.

To reinstall, reverse the procedure.

Link Rod Fixing Hardware Replacement

1. Remove the existing shoulder screw and nuts. Replace with bolt (500170), washer (500913), nuts (502819) and lock washer (500454) as per figure 1.
2. Adjust link rod so that it is vertical.
3. Repeat same procedure for both rear height control valve link rods.

NOTE
Slide the bolt with the flat washer inside the link rod end, fasten a nut, and install the flat bar then secure using the lock washer and nut.

Waste disposal:

Discard according to applicable environmental regulations (Municipal/State[Prov.]/ Federal)

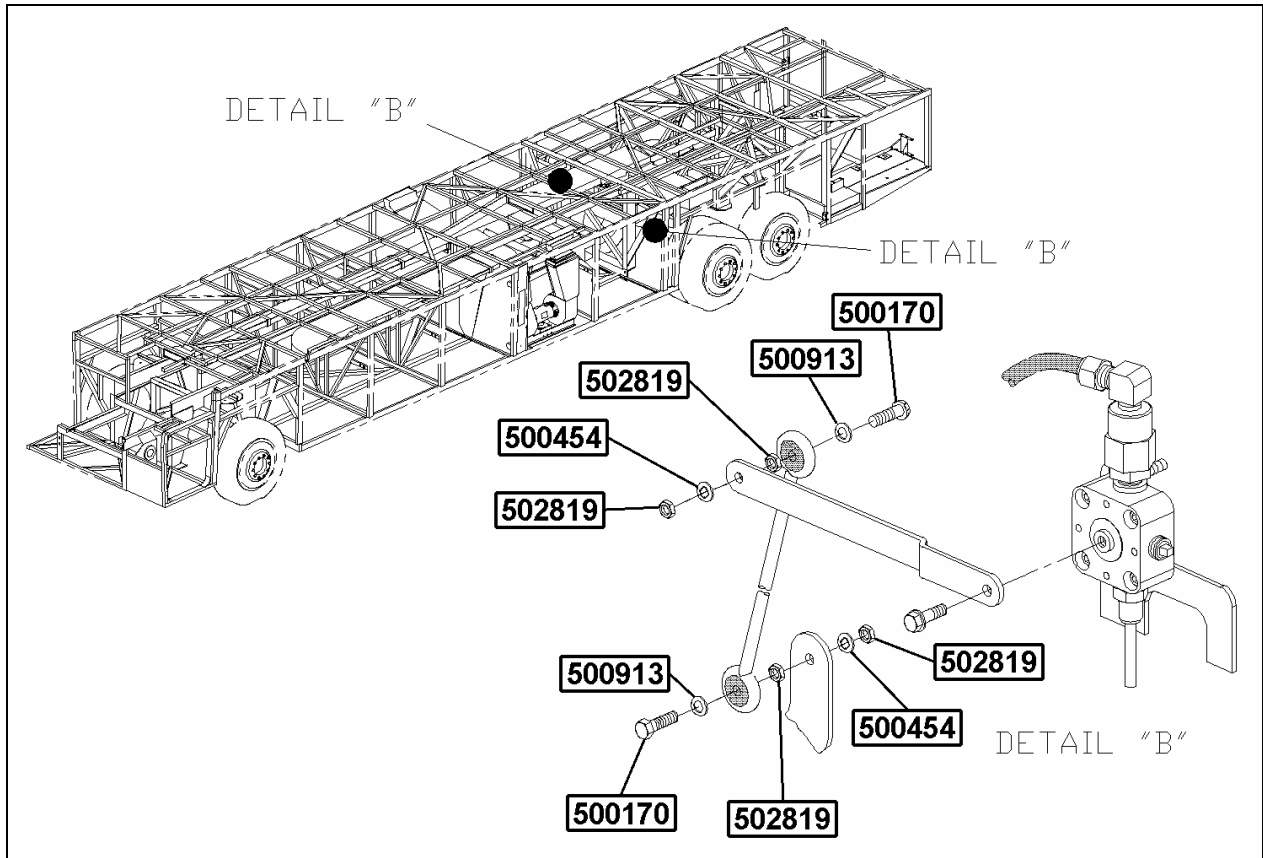


FIGURE 1: TYPICAL INSTALLATION