

**SAFETY
RECALL****SR13-31**

DATE : AUGUST 2013	SECTION : 12-BRAKE
SUBJECT : MGM Type 24 J-series piston parking brake chamber	

APPLICATION

PREVOST is recalling the following brake chamber part numbers sold by Prevost Parts with date code between **C112310** (November 23, 2010) and **C033112** (March 31, 2012) *inclusively*.

192207 199073 199079 199116 199199 199193

DESCRIPTION

On the items affected by this recall, MGM brake chambers purchased by your organization via Prevost Parts may experience an air leak on the spring side of the chamber when the park brake is released by the driver.

If this occurs, the brake shoes at that wheel end may not fully release and if undetected may result in a wheel end fire.

Inspection of the brake chamber I.D. plate is required. Replace if date code is within the described range.

MATERIAL

If required, order the following replacement parts:

Part No.	MGM Part No	Description	Qty
199207	<i>MJS3024ET106</i>	BRAKE CHAMBER	A/R
199073	<i>MJS2424ET051</i>	BRAKE CHAMBER	A/R
199079	<i>MJS3024ET062</i>	BRAKE CHAMBER	A/R
199116	<i>MJB2124ET710</i>	BRAKE CHAMBER	A/R
199193	<i>MJS3024ET051</i>	BRAKE CHAMBER PART OF KIT 19506030	A/R
199199	<i>MJS1724ET056</i>	BRAKE CHAMBER	A/R

NOTE

Material can be obtained through regular channels.

PROCEDURE



DANGER

Park vehicle safely, apply parking brake, stop engine and set battery master switch(es) to the OFF position prior to working on the vehicle.



DANGER

Park brake chambers are under extreme pressure and safe work practices must be observed. Without proper training and equipment, personal injury or death may occur. PrevoSt strongly recommends that any replacement be done by a qualified service technician or service facility.

1. This recall involves inspection of the brake chambers for the suspect date code and replacement if found.
2. Check the date code on the brake chamber identification tag. If the date code has a prefix of "C" AND falls on or between November 23, 2010 and March 31, 2012 AND has one of the part numbers listed, the brake chamber must be replaced.
3. The ID tag on the chamber includes the chambers part number and manufacturing date. The date code is in the format of a letter code (signifying build location), followed by build date in a double digit format Month/Day/Year format.

Recalled Part numbers :

MJS3024ET106

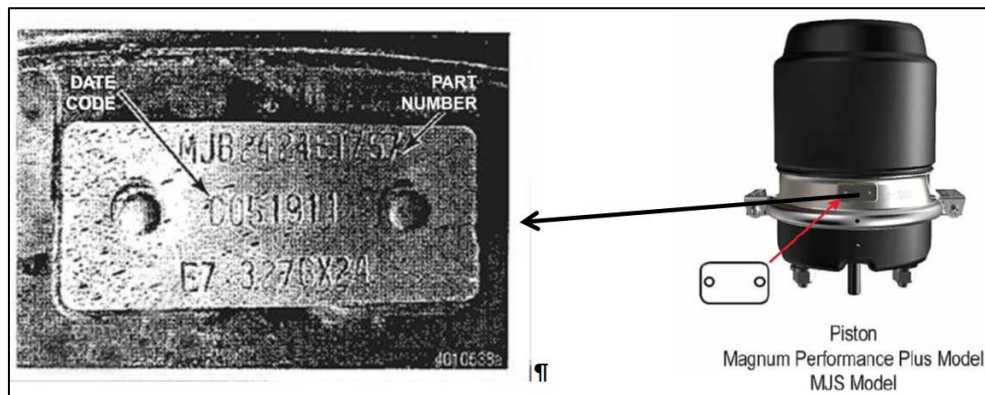
MJS2424ET051

MJS3024ET062

MJB2124ET710

MJS3024ET051

MJS1724ET056



4. If date code is between C112310 (November 23, 2010) and C033112 (March 31, 2012) inclusively, part must be replaced.
5. Inventory parts must be inspected as well as parts installed on vehicles. All parts must be located and replaced.
6. Only parts found with a part number listed on this document AND the suspect date code range of C112310-C033112 require replacement.

PARTS DISPOSAL

Please contact Kimberly Jones of MGM Brakes at (704) 547-7411 ext. 154 or send an email to kjones@mgmbrakes.com.

WARRANTY

Replacement material will be provided free of charge. Please contact Kimberly Jones of MGM Brakes at (704) 547-7411 ext. 154 or by sending an email to kjones@mgmbrakes.com.

*Access all our Service Bulletins on
<http://prevostparts.volvo.com/technicalpublications/en/pub.asp>
Or scan the QR-Code with your smart phone*

