

PREVOST

ENREGISTRÉ - REGISTERED
ISO 9001 & ISO 14001



**WARRANTY
BULLETIN**

Wb11-21



DATE : MAY 2011	SECTION : 16 - Suspension
EXPIRATION: MAY 2013	
SUBJECT : FRONT AXLE LONGITUDINAL RADIUS ROD SUPPORTS - INSPECTION OF DOWEL PINS	

APPLICATION

Model	VIN		
H3-45 Coach Model Year : 2010 - 2011	2PCH33490AC71 <u>1700</u>		2PCH33499AC71 <u>1713</u>
	2PCH33495AC71 <u>1708</u>		2PCH33492AC71 <u>1715</u>
	2PCH33493AC71 <u>1710</u>		2PCH33495BC71 <u>1726</u>

DESCRIPTION

On the vehicles affected by this bulletin, it is necessary to proceed to the inspection of the dowel pins associated to the front axle longitudinal radius rod supports. The dowel pins might have moved downwards, which is not appropriate.

If some dowel pins have moved, are broken or seem loose, a replacement is necessary.

MATERIAL

Order the following parts:

Part No.	Description	Qty
110340	Tab washer	As required
110667	Tab washer	As required
131966	Dowel pin	As required

NOTE

Material can be obtained through regular channels.

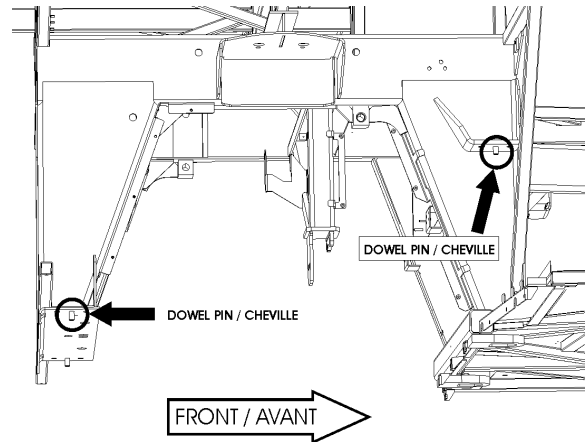
PROCEDURE - DOWEL PINS INSPECTION



DANGER

Park vehicle safely, apply parking brake, stop engine and set battery master switch(es) to the OFF position prior to working on the vehicle.

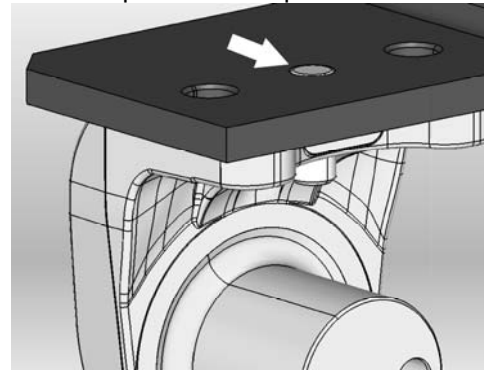
1. Locate the dowel pins, 2 on each side, in front of and behind the axle.



2. Check if dowel pins have moved downwards. The top of the dowel pins must be flush with the plate surface. Assure that the dowel pins are firmly holding in the hole and not loose. If the dowel pins are loose or are not flush, replace dowel pin as described in the replacement procedure.

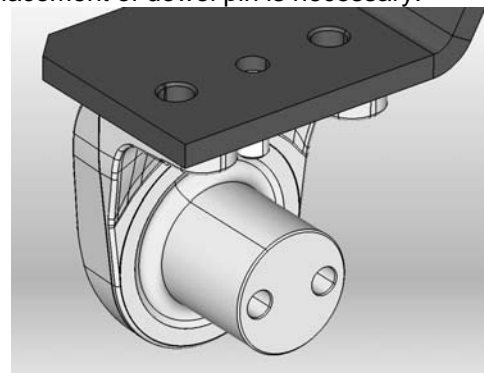
APPROPRIATE INSTALLATION

Top of dowel pin flush with plate surface



INAPPROPRIATE INSTALLATION

Dowel pin moved downwards. Top of dowel pin not flush with plate surface. Removal and replacement of dowel pin is necessary.



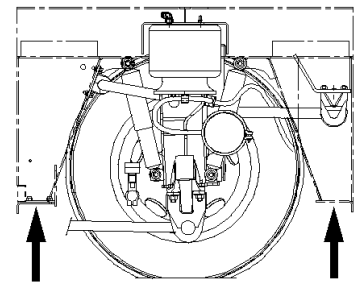
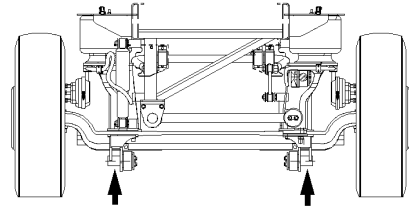
PROCEDURE - DOWEL PIN REPLACEMENT



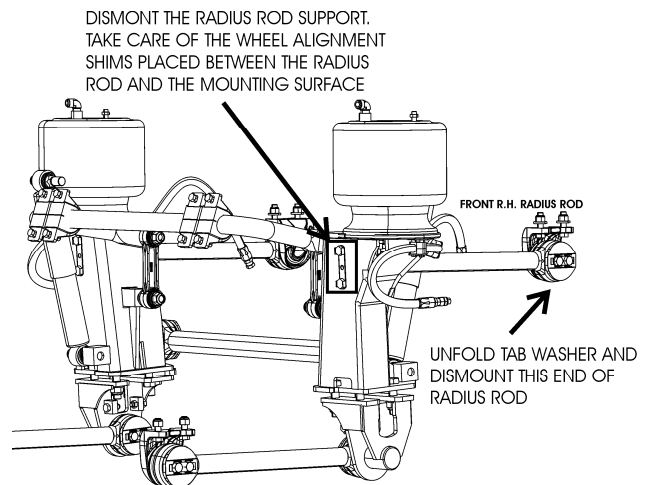
DANGER

Park vehicle safely, apply parking brake, stop engine and set battery master switch(es) to the OFF position prior to working on the vehicle.

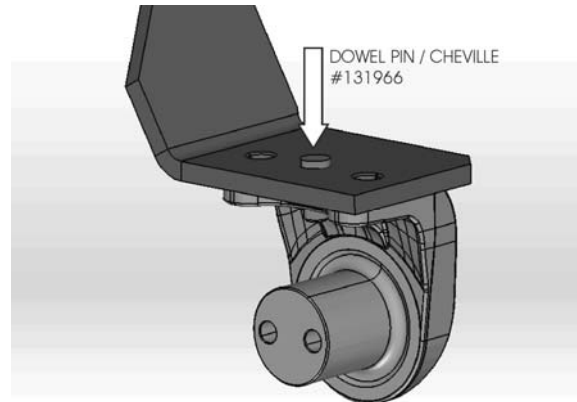
1. Raise the auxiliary axle (tag).
2. Lift the vehicle using the jacking points on front axle and drive axle.
3. Using four (4) jack stands, support the front of vehicle using the front underframe jacking points. Release air pressure from front air springs. To do so, lower the front axles a few inches until the air exhausts.



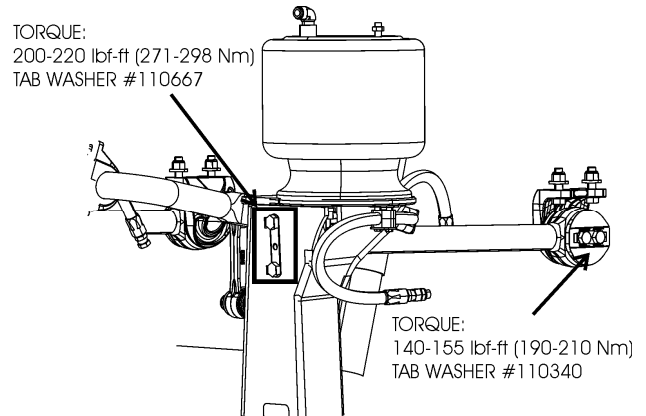
4. Dismount R.H. front radius rod. To do so :
 - a. Unfold tab washer, unscrew bolts and dismount the front end of radius rod.
 - b. At the other end of radius rod, dismount the radius rod support. Be careful not to lose the wheel alignment shim(s) placed between the radius rod support and the mounting surface. It is very important to properly reinstall the shim(s) in order to keep proper wheel alignment.



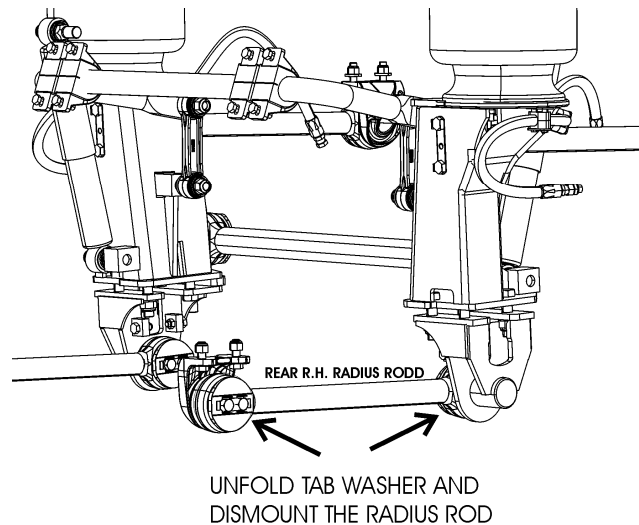
7. Remove the existing dowel pin. Clean hole.
8. On top of the support, insert the new dowel pin #131966. To ease installation, use a C clamp.



9. Reinstall the radius rod. Reinstall the alignment shim(s) between the radius rod support and the mounting surface in order to maintain proper wheel alignment. Tighten mounting bolts as specified on the image.



10. Dismount rear R.H. radius rod. To do so:
 - a. Unfold tab washers and unscrew bolts at each end of radius rod.



11. Replace the existing dowel pin as previously done. Reinstall the radius rod. Torque: 140-155 lbf-ft (190-210 Nm).
12. Repeat all the previous steps for the vehicle left side.

WARRANTY

This modification is covered by Prevost's normal warranty.

We will reimburse you 1/2 hour (0.5) of labor **for the inspection** upon receipt of a completed A.F.A. form on which you must specify as per "Warranty Bulletin 11-21 INSPECTION".

We will reimburse you the parts and three and a half hours (3.5) of labor **for the inspection and replacement** of the dowel pins upon receipt of a completed A.F.A. form on which you must specify as per "Warranty Bulletin 11-21" REPLACEMENT.

OTHER

Fail Code	16-00
Defect Code	52
System Condition	B
Causal Part)	502164