

PREVOST


**WARRANTY
BULLETIN**

Wb97-09



DATE: Oct. 1997	SECTION: 06
SUBJECT: RELAY R39 & R41 REPLACEMENT	

APPLICATION:

Model	VIN
H3-41, H3-45 and H3-45 VIP Model Year: 1997	 <p>From 2PCH3349XV1011779 up to 2PCH33490V1011791 incl. From 2PCH33497V1011805 up to 2PCH3349XV1011829 incl. From 2PCH33496V1011844 up to 2PCH3349XV1011846 incl. From 2PCH33496V1011861 up to 2PCH33497V1011870 incl. From 2PCH33417V1011877 up to 2PCH33417V1011880 incl. From 2PCH33414V1011884 up to 2PCH33490V1011886 incl.</p> <p style="text-align: center;">and</p> <p>2PCH33410V1011718, 2PCV33494V1011795, 2PCV33497V1011855, 2PCH33410V1011882 2PCV33491V1011835, 2PCH33494V1011857, 2PCH33496V1011889 2PCH33493V1011851, 2PCH33496V1011858, 2PCH33413V1011892 2PCH33495V1011852, 2PCV33492V1011875, 2PCV33498V1011895</p>

DESCRIPTION

On the above-mentioned vehicles, the plastic cubic relays (R39 & R41) used with condenser fan motors have been found, over the long run, inadequate for this use. Thus, we recommend that you replace these relays by a round steel model, which will be more efficient for this application.

MATERIAL

Part No.	Description	Qty
561005	Relay 24 volts, 200 amps	2
060798	Diode assembly	2
561246	Ring terminal 5/16" (#12-10 AWG)	4
560815	Ring terminal #10 (#22-18 AWG)	4
500883	Tapping screw #8-32 x 3/8"	4

500470	Lock washer zinc plated 3/16"	4
500438	Flat washer zinc plated 3/16"	4

Note: Material can be obtained through regular channels.

PROCEDURE

Warning: Park vehicle safely, apply parking brake, stop engine and set battery master switch(es) to the OFF position prior to working on the vehicle.

1. Open Main power compartment door (refer to figure 1).

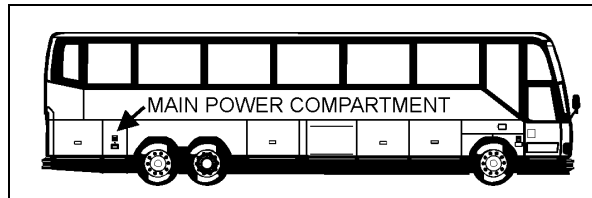


FIGURE 1

06211

2. Locate relay R39 and R41, refer to figure 2 to ease identification of relay R39 and R41.
3. Remove screws and washers retaining relay R39 and R41, cut each wire near terminal, then discard relays and fasteners.

Note: Vehicles equipped with wheelchair lift system have a circuit breaker (CB126) installed just over relay R39 and R41. This circuit breaker must be removed and reinstall in the upper right hand corner of the same panel.

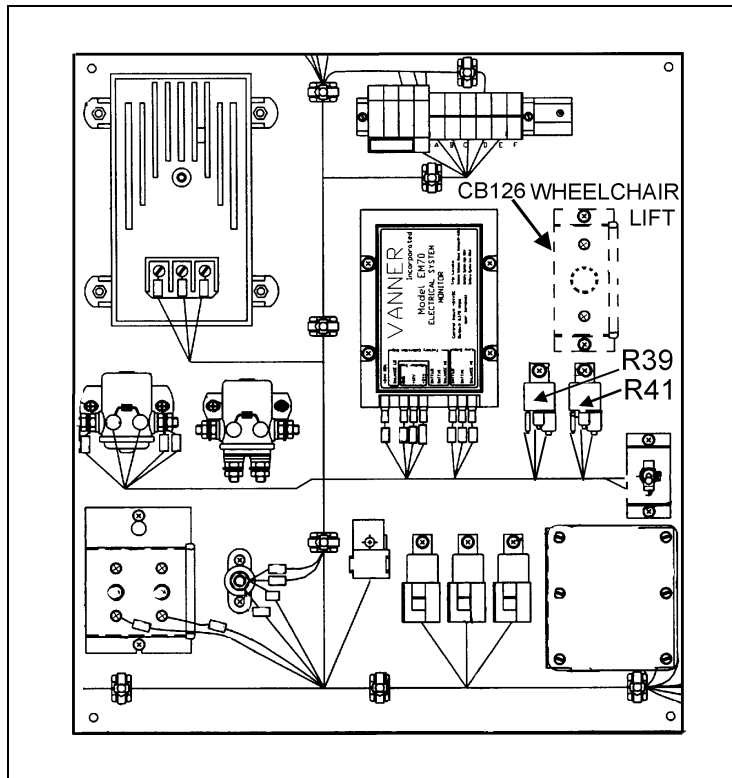


FIGURE 2: LOCATION OF RELAYS

4. Referring to figure 3, drill 4 holes using a 9/64" (3,6 mm) diameter bit.

Caution: Drill only the panel, do not drill through the compartment back wall.

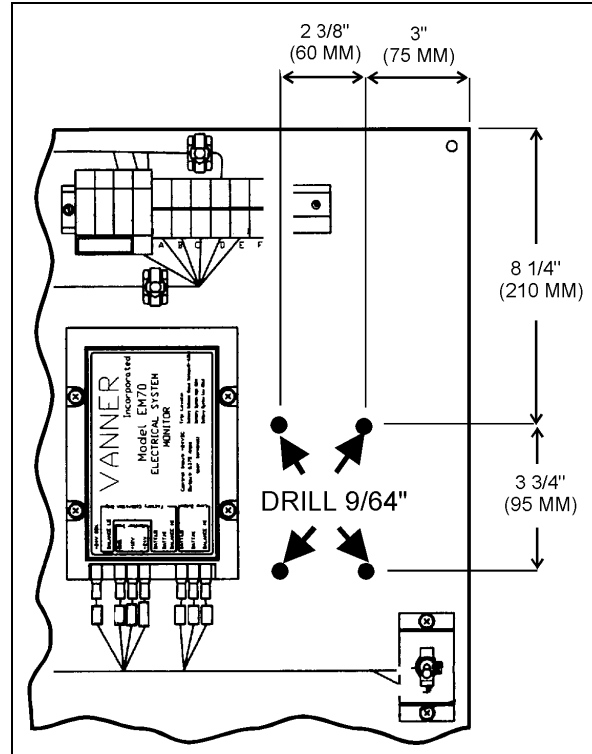


FIGURE 3

5. Position relay R39 as illustrated in figure 4, then fix using tapping screws (#500883), lock washers (#500470) and flat washers (#500438).

6. Position relay R41 as illustrated in figure 4, then fix using tapping screws (#500883), lock washers (#500470) and flat washers (#500438).

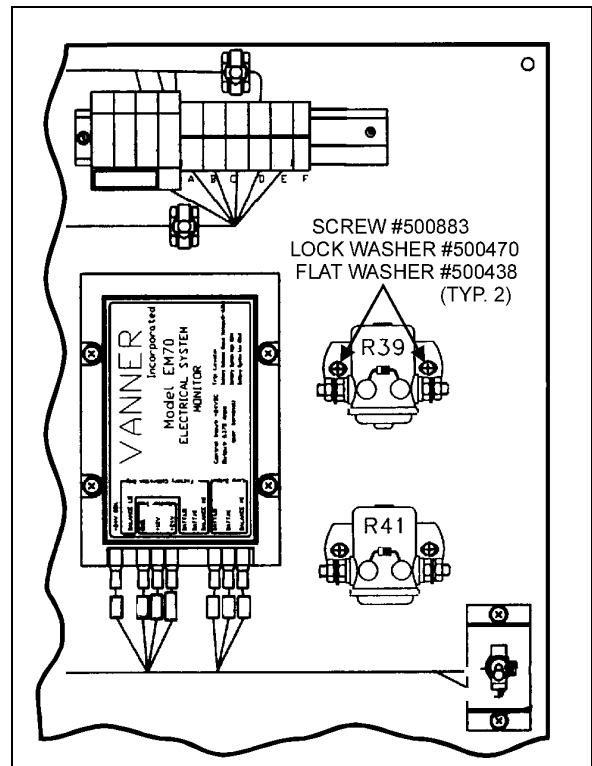


FIGURE 4

7. Strip extremity of wire #41, crimp a ring terminal (#561246) then connect to relay R39 as illustrated in figure 5. Tighten nut to 40 lbf•in maximum.

Caution: To prevent damage to relay when installing or removing wires, it is important to hold bottom nut firmly when top nut is being tightened or loosened.

8. Strip extremity of wire # 41A, crimp a ring terminal (#561246) then connect to relay R39. Tighten nut to 40 lbf•in maximum.

9. Position diode assembly (#060798) on relay R39 as illustrated in figure 5, strip extremity of wire #67K, crimp a ring terminal (#560815) then connect to relay R39. Tighten nut to 20 lbf•in maximum.

Caution: Ensure to correctly position diode assembly as illustrated in figure 5.

10. Strip extremity of wire #OC, crimp a ring terminal (#560815) then connect to relay R39. Tighten nut to 20 lbf•in maximum.

11. Strip extremity of wire #41B, crimp a ring terminal (#561246) then connect to relay R41 as illustrated in figure 6. Tighten nut to 40 lbf•in maximum.

12. Strip extremity of wire #OD, crimp a ring terminal (#561246) then connect to relay R41. Tighten nut to 40 lbf•in maximum.

13. Position diode assembly (#060798) on relay R41 as illustrated in figure 6, strip extremity of wire #67L, crimp a ring terminal (#560815) then connect to relay R41. Tighten nut to 20 lbf•in maximum.

Caution: Ensure to correctly position diode assembly as illustrated in figure 6.

14. Strip extremity of wire #OC, crimp a ring terminal (#560815) then connect to relay R41. Tighten nut to 20 lbf•in maximum.

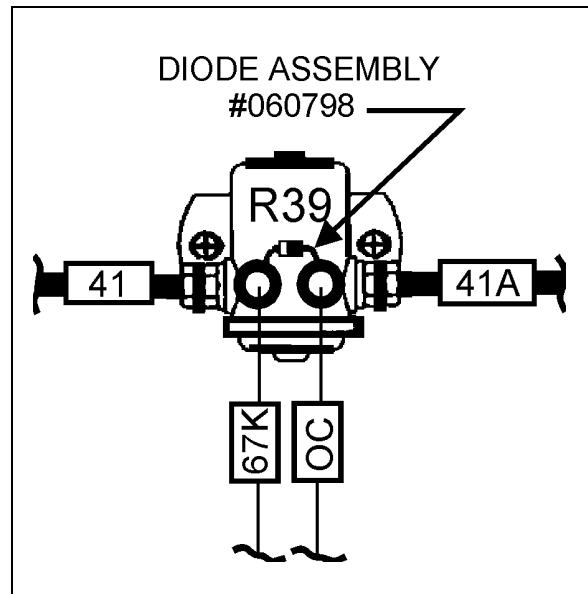


FIGURE 5

06212

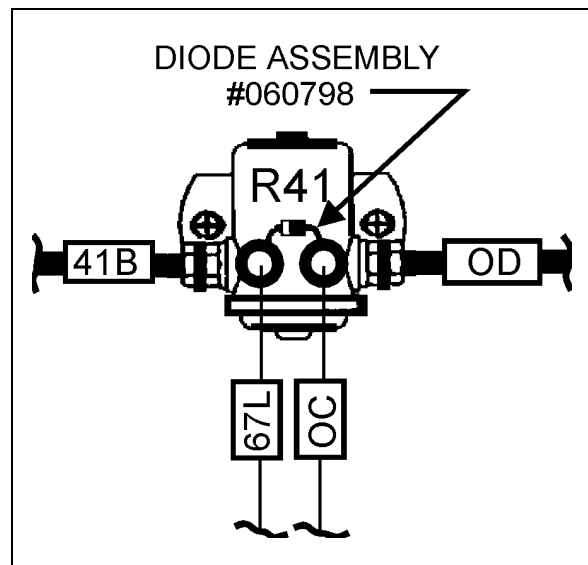


FIGURE 6

15. Close Main power compartment door.

WARRANTY

This modification is covered by the manufacturer's normal warranty. We will reimburse you the parts and three quarters of an hour (0.75) of labor upon receipt of a completed A.F.A. form on which you must specify as per "Warranty Bulletin 97-09".

Parts disposition:

Discard according to applicable environmental regulations (Municipal/State[Prov.]/ Federal).
--

Expiration date: October 1998