

PREVOST

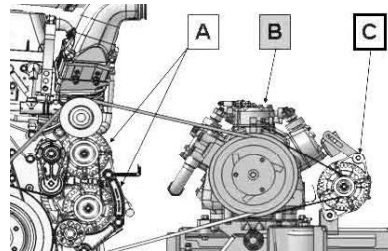
Instruction Sheet

IS-11122

MUD GUARD INSTALLATION AUXILIARY HD 10E 12V BOSCH ALTERNATOR

For X3-45 VIP and H3-45 VIP Motorhomes

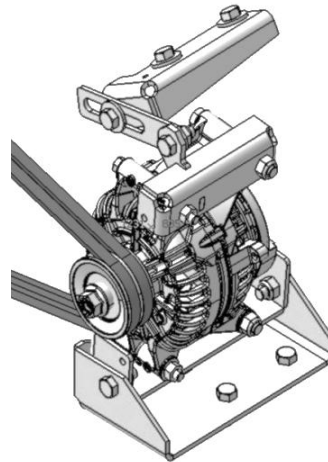
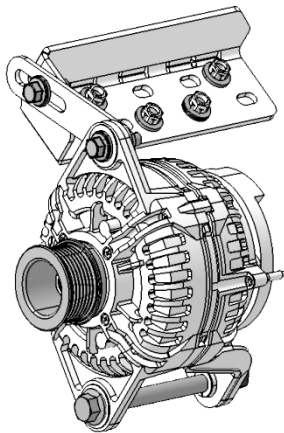
Install guard to protect 12V BOSCH alternator (location "C") from mist and dust.



Select one of two kits depending on mounting type.

For standard mounting, order kit #068548.

For pad mount type order kit #068544



MATERIAL

Kit #068548 includes the following parts:

Part No.	Description	Qty
068457	MUD GUARD – STANDARD	1
FI-11122	FEUILLE D'INSTRUCTIONS	1
IS-11122	INSTRUCTION SHEET	1

Kit #068544 includes the following parts:

Part No.	Description	Qty
068419	MUD GUARD – PAD MOUNT	1
500211	FLAT WASHER N500 0.531x1.25x0.125	1
FI-11122	FEUILLE D'INSTRUCTIONS	1
IS-11122	INSTRUCTION SHEET	1

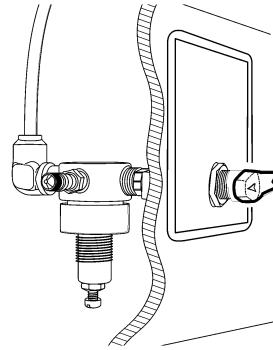
PROCEDURE



DANGER

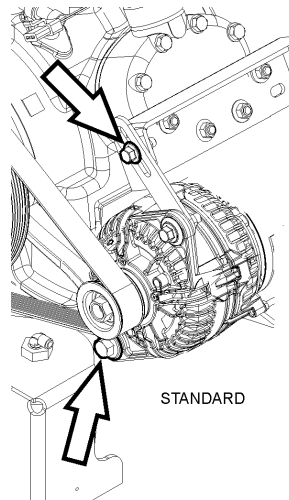
Park vehicle safely, apply parking brake, stop engine and set battery master switch(es) to the OFF position prior to working on the vehicle.

1. Relieve tension on compressor belts by turning the belt tensioner pressure control handle.

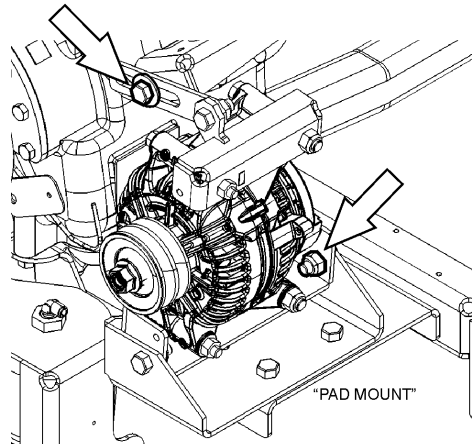


2. Mark tensioner adjustment bolt position and slack to relieve belt tension.

3. Standard mount alternator:
Remove lower pivot bolt and nut.
Retain for re-assembly



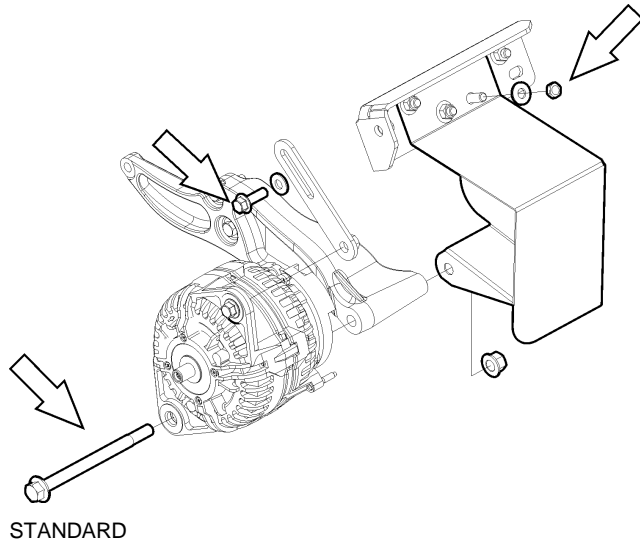
4. Pad mount alternator:
Remove fore pivot bolt and nut.
Retain for re-assembly.



5. Use existing hardware on tensioner upper bracket to install upper lip of guard.

6. Standard mount alternator:
Re-assemble lower pivot bolt and nut.

Tighten to 43 lb.-ft.



7. Pad mount alternator:
Re-assemble fore pivot bolt and nut. Add washer #500211 as shown.

Tighten to 74 lb.-ft.

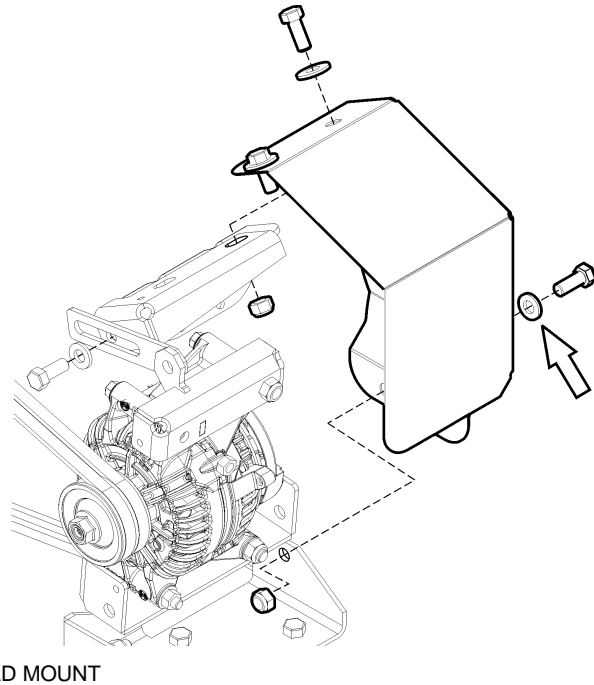
8. Re-position tensioner adjustment bolt to previously marked position (Step 2).

Standard mount alternator:

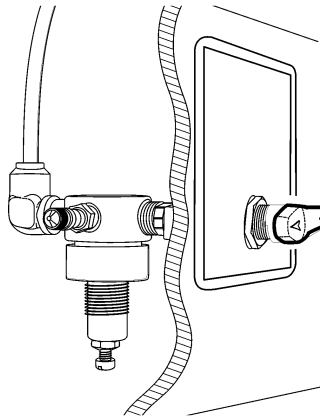
Tighten to 32 lb.-ft.

Pad mount alternator:

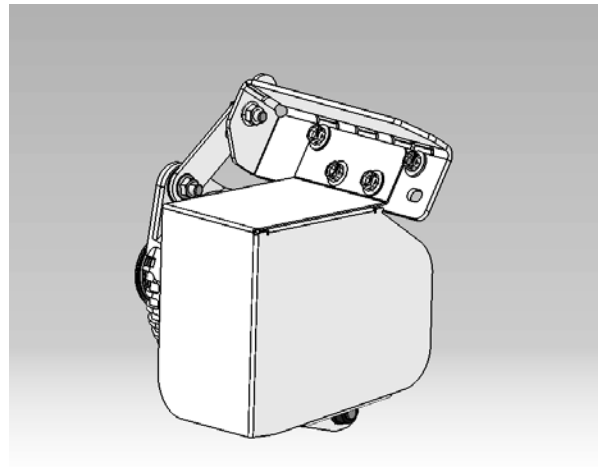
Tighten to 74 lb.-ft.



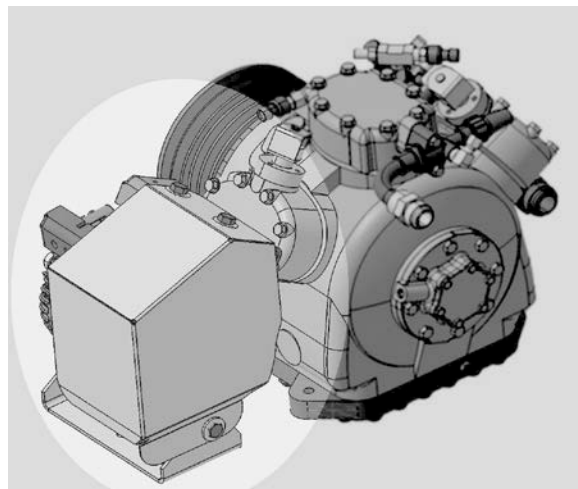
-
9. Restore tension on compressor belts by turning the belt tensioner pressure control handle.



10. Final result.



STANDARD



PAD MOUNT