



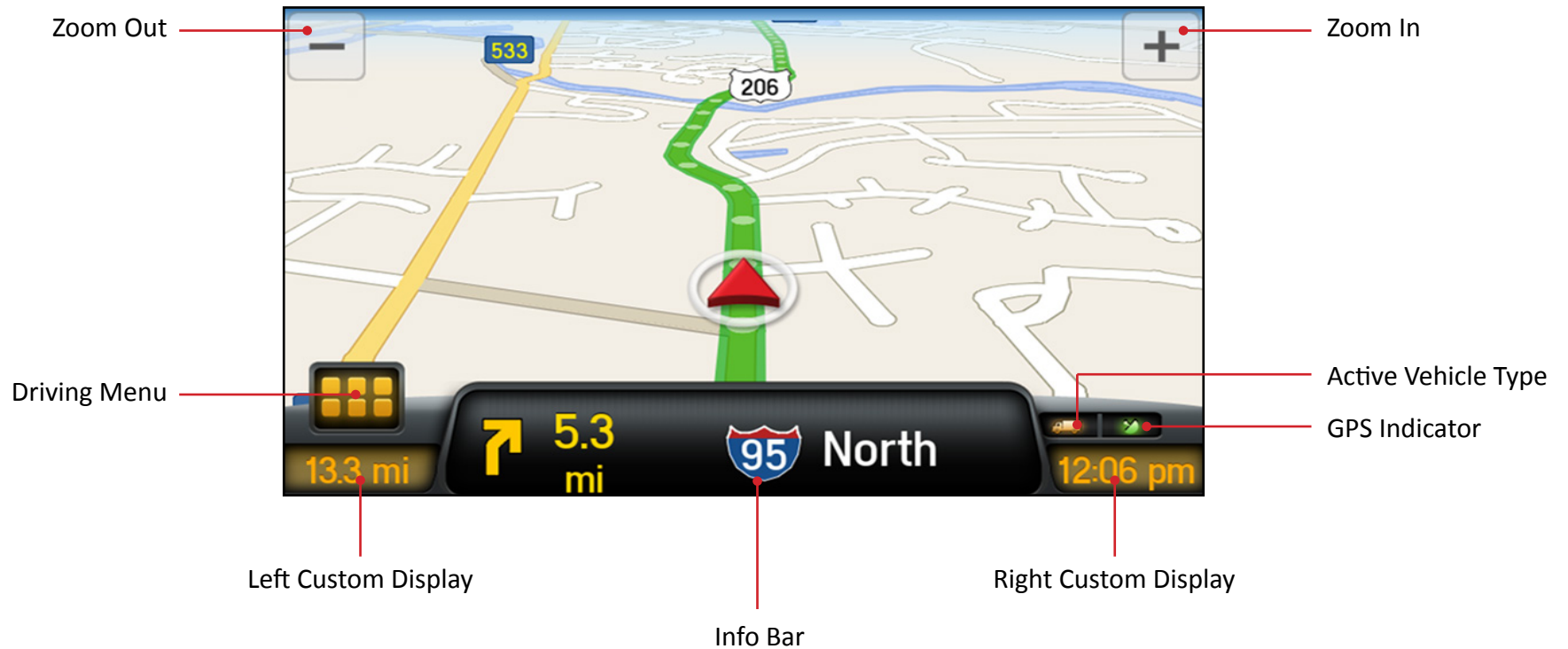
CoPILOT[®] TRUCK[™]

Version 9 Quick Start Guide


OVERVIEW

Driving Screen

Most of your time using CoPilot Truck will be spent on this screen. Let's take a moment and get familiar with the items you can interact with.

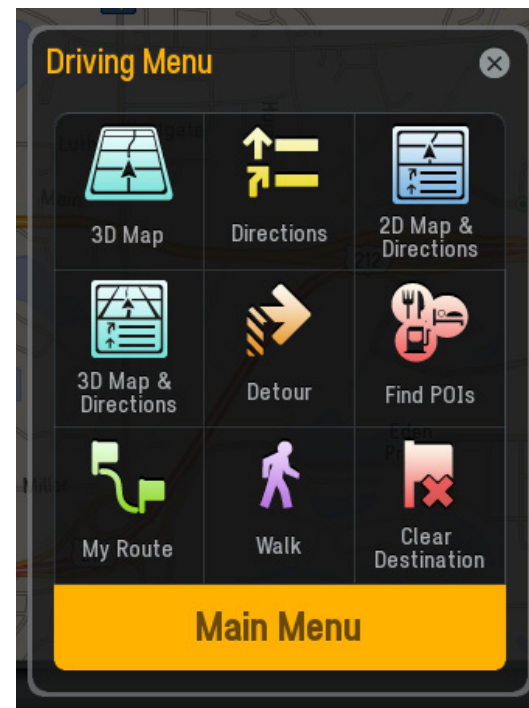
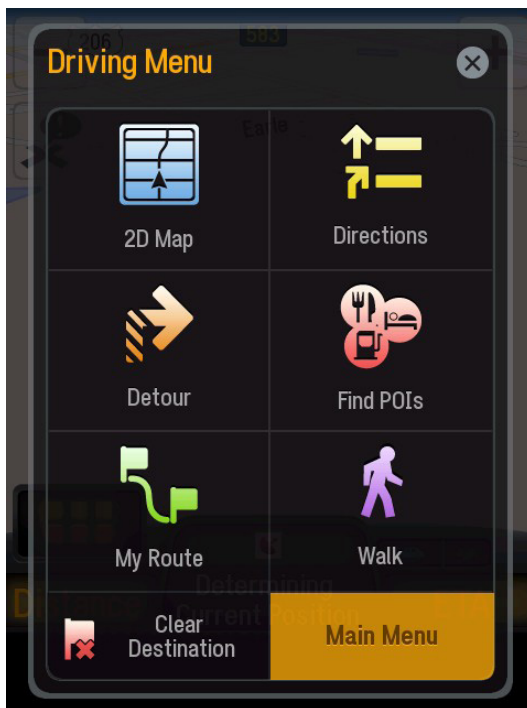


Driving Menu

Tapping on the  icon will open up the Driving Menu.

From here you can access different driving views, view and/or alter your route, and clear your destination. This is also where you can access the Main Menu for CoPilot Truck.

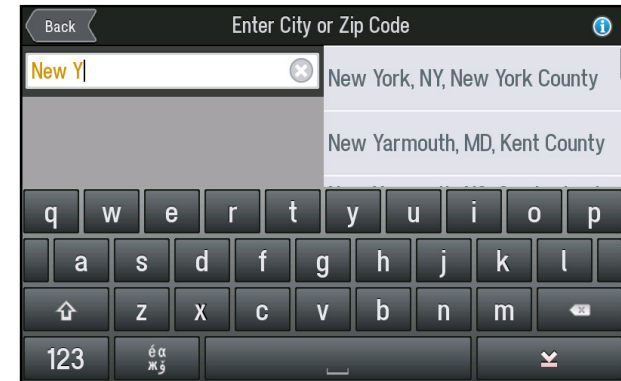
Depending on your device you will see one of the below Driving Menus. Smaller devices will see our 2x3 menu, while larger devices (such as tablets and laptops) that can take advantage of our split screen view will see our 3x3 menu.



ENTER A DESTINATION

Address

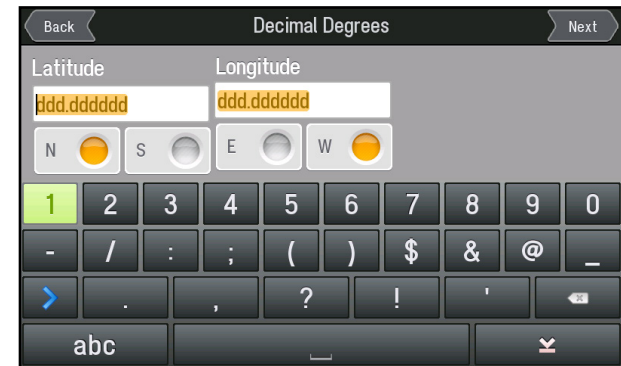
- In the main menu, tap **Go To > Address**
- Start to type the city, town name, or zip code of the destination
- As you type, the names of cities or towns that match what you have entered will be displayed. When the name of the place you want to go to appears in the list, tap it to set it as your destination.
- Start to type the street name. The names of streets that match those found within the city or town name you selected above will be displayed. Select the street name within the list as your destination.
- Enter the address number and tap it to set it as your destination.
- You can also choose to **skip** this step and go to the town or city center, or select a **cross street** to navigate to an intersection.
- Tap **GO** to begin navigating.



Coordinates

Use coordinates to enter a specific location as a destination.

- In the **Go To** menu, tap **Coordinates**.
- You can enter a destination using Decimal Degrees.
- Enter the latitude and longitude values in the format that you are asked for and then tap **Next**.
- Tap **GO** to begin navigating there



Points of Interest

- In the **Go To** menu, select **Points of Interest**.
- The most frequently used Points of Interest (POI) categories will be displayed:
 - Truck Services
 - Restaurant
 - Hotels
- To find additional types of POIs, tap **More Categories** or **Search All**

Tap on **Search Nearby** at the top of the screen and choose from:

- **Nearby** – to find POIs that are close to your current location
- **On My Route** – to find POIs along your route
- **In Different City** – for POIs in a certain city or town


Select a POI from the list. More information about the POI will be displayed. You can choose to:

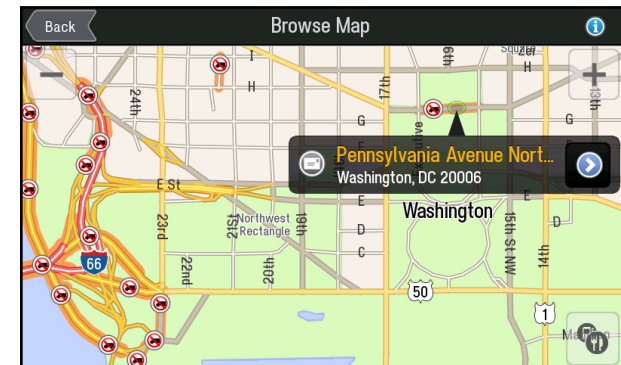
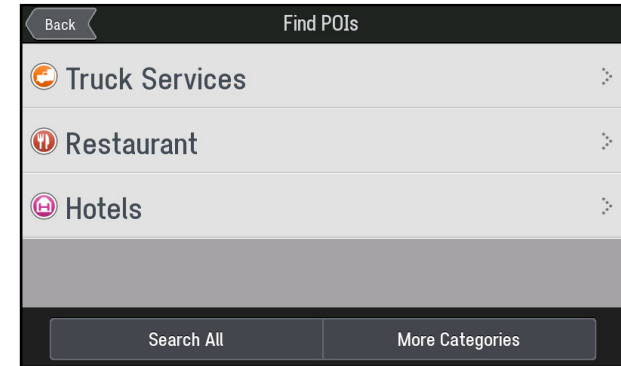
- **Add to Favorites** – to save the POI as a Favorite
- **Set Destination** – to enter the POI as your destination
- **Show Map** – view the POI location on the map

Browse Map

- In the **Go To** menu, tap **Browse Map**
- Drag the map to pan, or pinch the map to zoom in or out, until you find your destination.
- Tap the location on the map.

An info box will show the location on the map.

- Tap  on the info box to bring up more details about that location.
- Tap **Set Destination**.
- Tap **GO** to start navigating there.



PLAN OR EDIT TRIP


Enter Multiple Destinations

CoPilot Truck lets you plan a route with multiple destinations. Here's how:

- In the Main Menu, tap **Route**.
- Tap **Plan or Edit Trip**.
- Select **Add Stop to Get Started**.
- Tap **Address**. Enter the **City, Street Name, and House Number** of the address.
- Tap **Add Stop** to enter additional addresses.

Delete a Destination

Once you've entered a destination, you can always delete it from your itinerary if you no longer wish to go there.

- Select the destination you want to delete.
- A pop-up menu will appear containing a list of options.
- Tap  to remove the selected destination from the list.
- Select **Yes** to delete the destination, tap **No** to keep it in the list.

Save a Trip

For any trips that you make regularly, it's worth saving those trips so that you can access them any time you need to make the same trip again.

- Tap **Save**.
- Enter a name for the trip and tap **Save**.

Load A Trip

If you've already saved a trip, you can easily re-load it anytime you want to make it.

- Tap **Load**.
- Select the trip that you would like to load from the list and then tap **Open**.

To remove the saved trip, tap **Delete**.

Please see the v9 User Guide for a complete overview of all the features and settings available in CoPilot Truck.

