

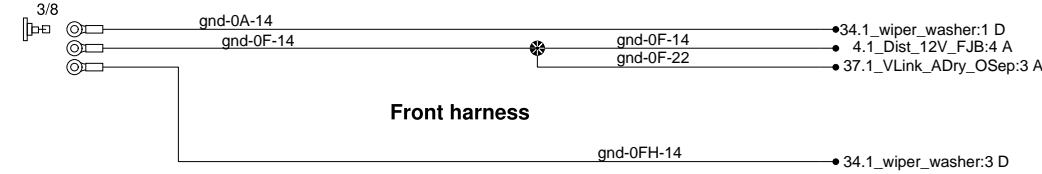
****Ground distribution:****

0-Electric gnd
00- Electronic Gnd

A-Dash - Lh console harness
F-Front junction box harness
FH-Front harness
R-Rear junction box harness
FR-Front to rear

Chassis ground distribution

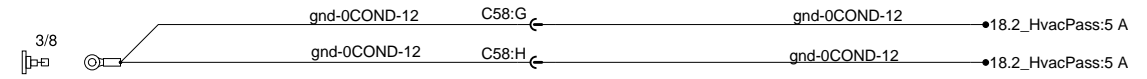
Front GND stud



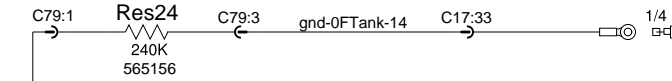
Dash harness

Front harness

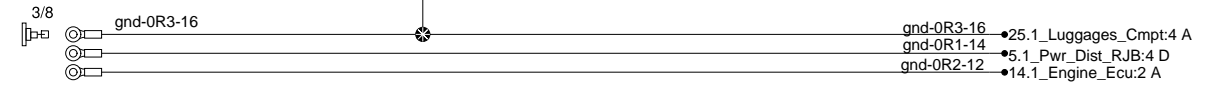
Condensor cmpt. stud



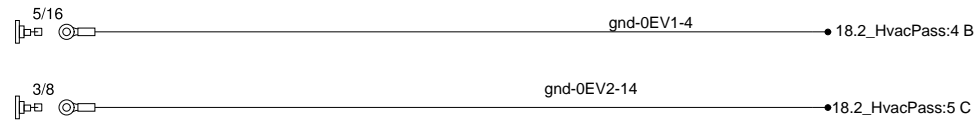
Fuel tank ground stud



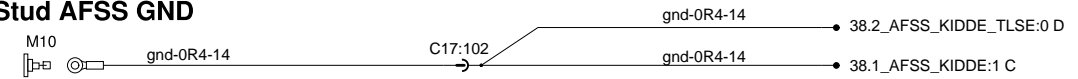
RJB stud



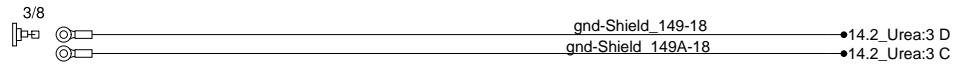
Evaporator cmpt. stud



RJB Stud AFSS GND



Urea cmpt. stud



Front radiator stud



Radiator door stud

Located on the top of the luggage compartment



Rear radiator stud



Luggage chassis stud



Engine studs

Engine cmpt. studs

