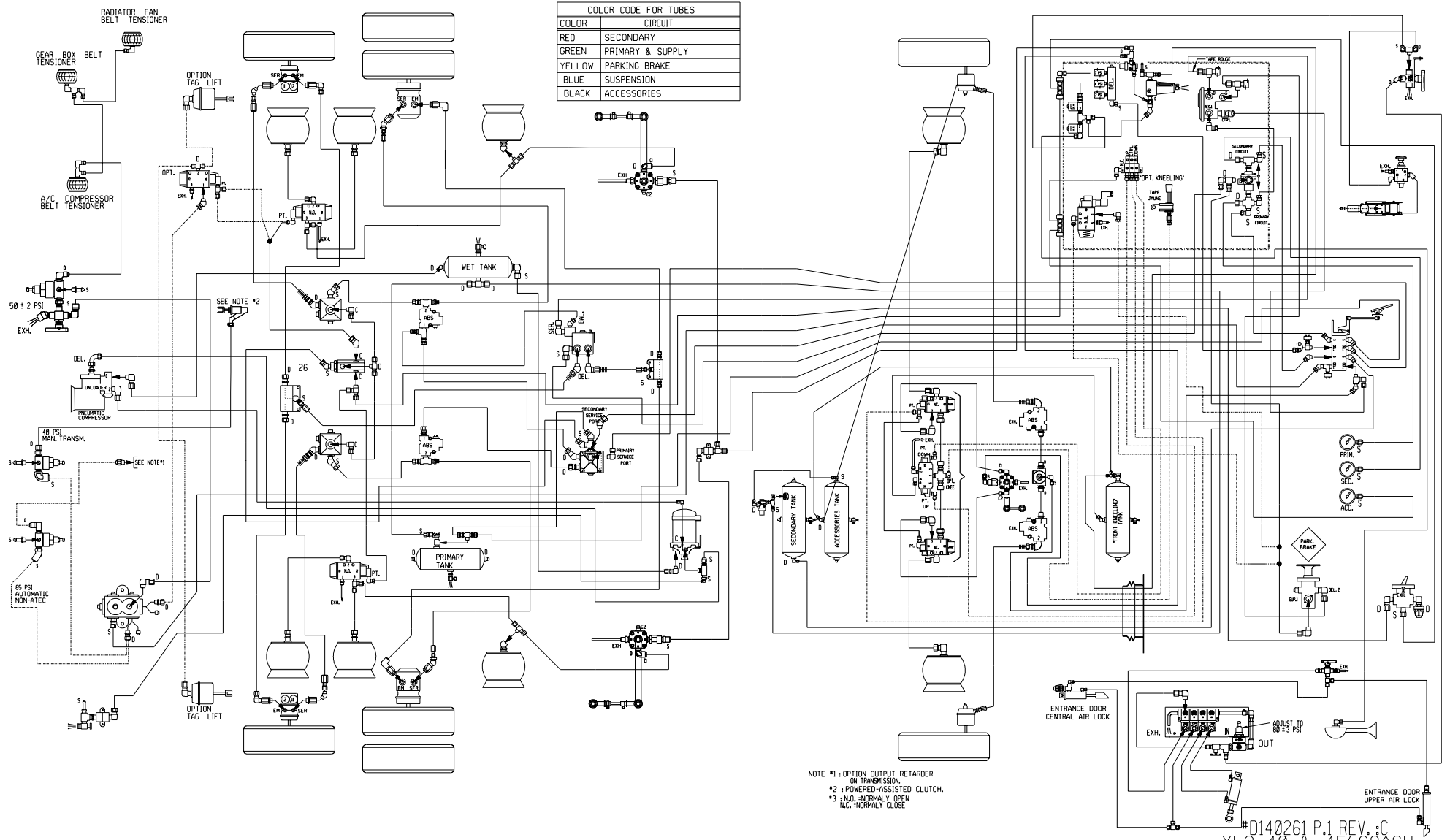


COLOR CODE FOR TUBES	
COLOR	CIRCUIT
RED	SECONDARY
GREEN	PRIMARY & SUPPLY
YELLOW	PARKING BRAKE
BLUE	SUSPENSION
BLACK	ACCESSORIES

NOTE #1 : OPTION OUTPUT RETARDER ON TRANSMISSION.
 #2 : POWERED-ASSISTED CLUTCH.
 #3 : N.O. =NORMALY OPEN
 N.C. =NORMALY CLOSE

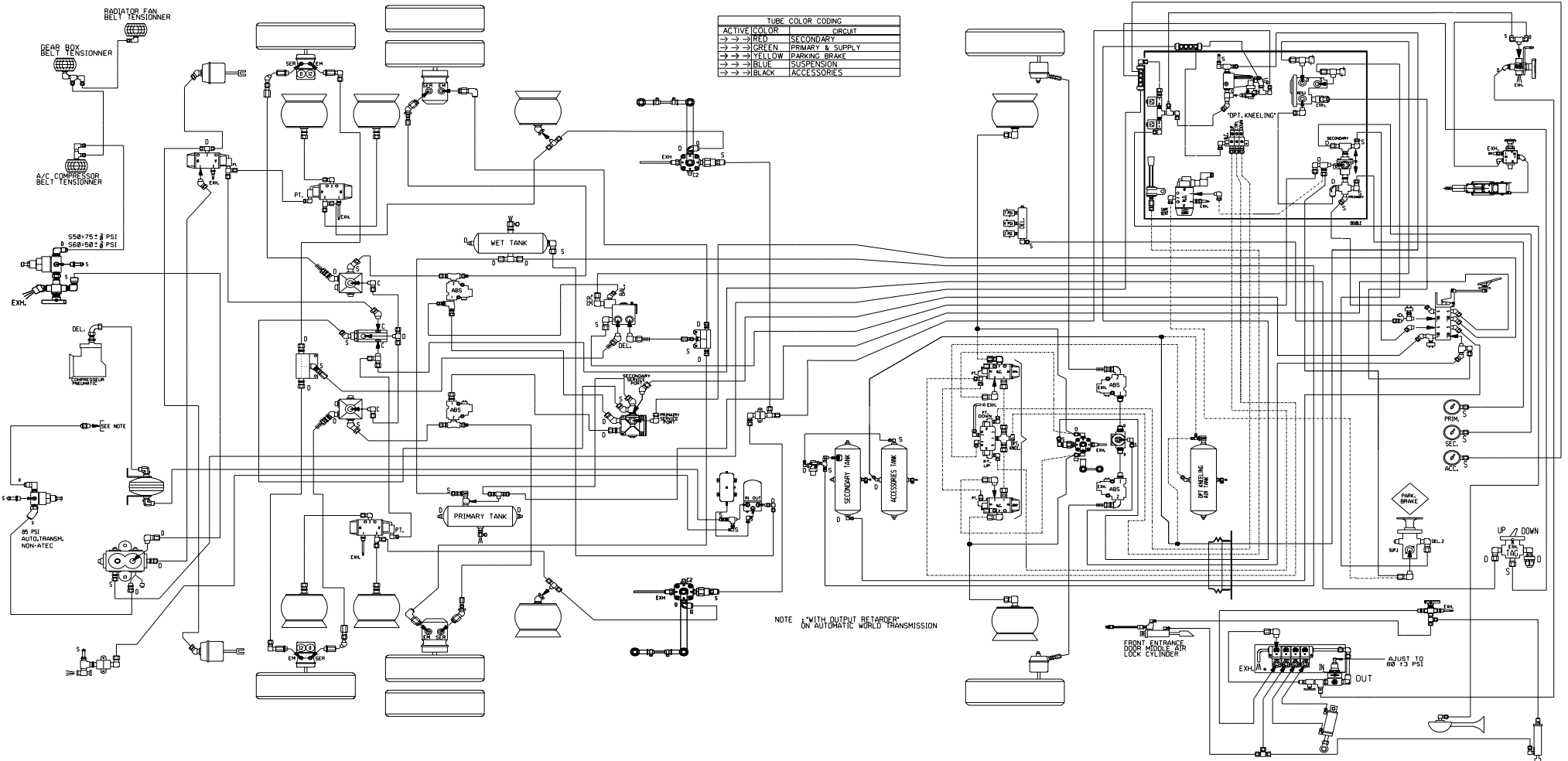
#D140261 P.1 REV. B
 XL2 40 & 45' COACH
 WITH FRONT BEAM AXLE

COLOR CODE FOR TUBES	
COLOR	CIRCUIT
RED	SECONDARY
GREEN	PRIMARY & SUPPLY
YELLOW	PARKING BRAKE
BLUE	SUSPENSION
BLACK	ACCESSORIES



NOTE #1: OPTION OUTPUT RETARDER ON TRANSMISSION.
 #2: POWERED-ASSISTED CLUTCH.
 #3: N.O. - NORMALY OPEN
 N.C. - NORMALY CLOSE

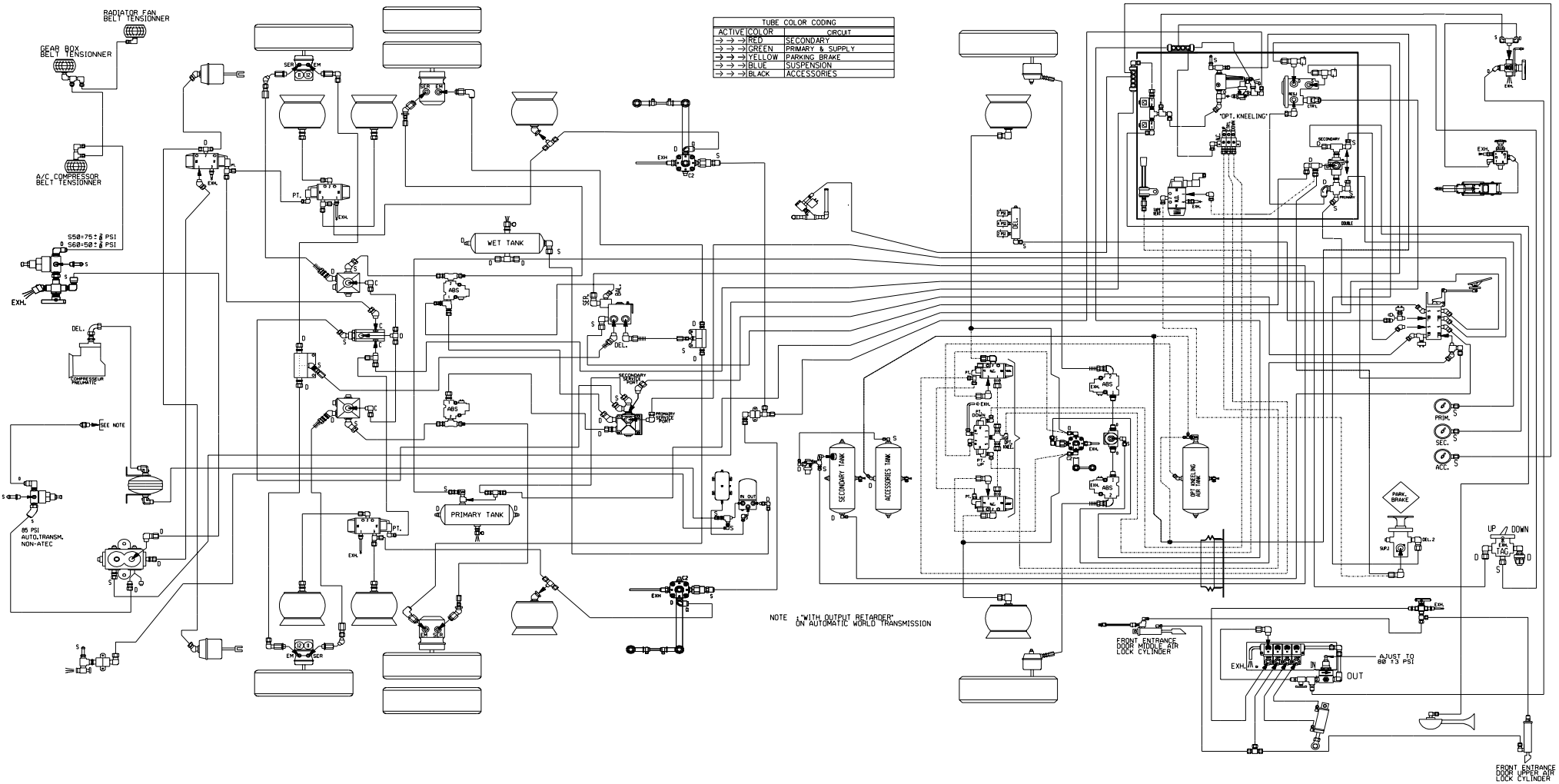
#D140261 P.1 REV. C
 XL2 40 & 45 COACH
 WITH FRONT BEAM AXLE



TUBE COLOR CODING	
ACTIVE COLOR	CIRCUIT
→ → → RED	SECONDARY
→ → → GREEN	PRIMARY & SUPPLY
→ → → YELLOW	PARKING BRAKE
→ → → BLUE	SUSPENSION
→ → → BLACK	ACCESSORIES

NOTE *WITH OUTPUT RETARDER*
ON AUTOMATIC WORLD TRANSMISSION

*D140261 P.1 REV.F
COACH XL2 45'
WITH FRONT BEAM AXLE



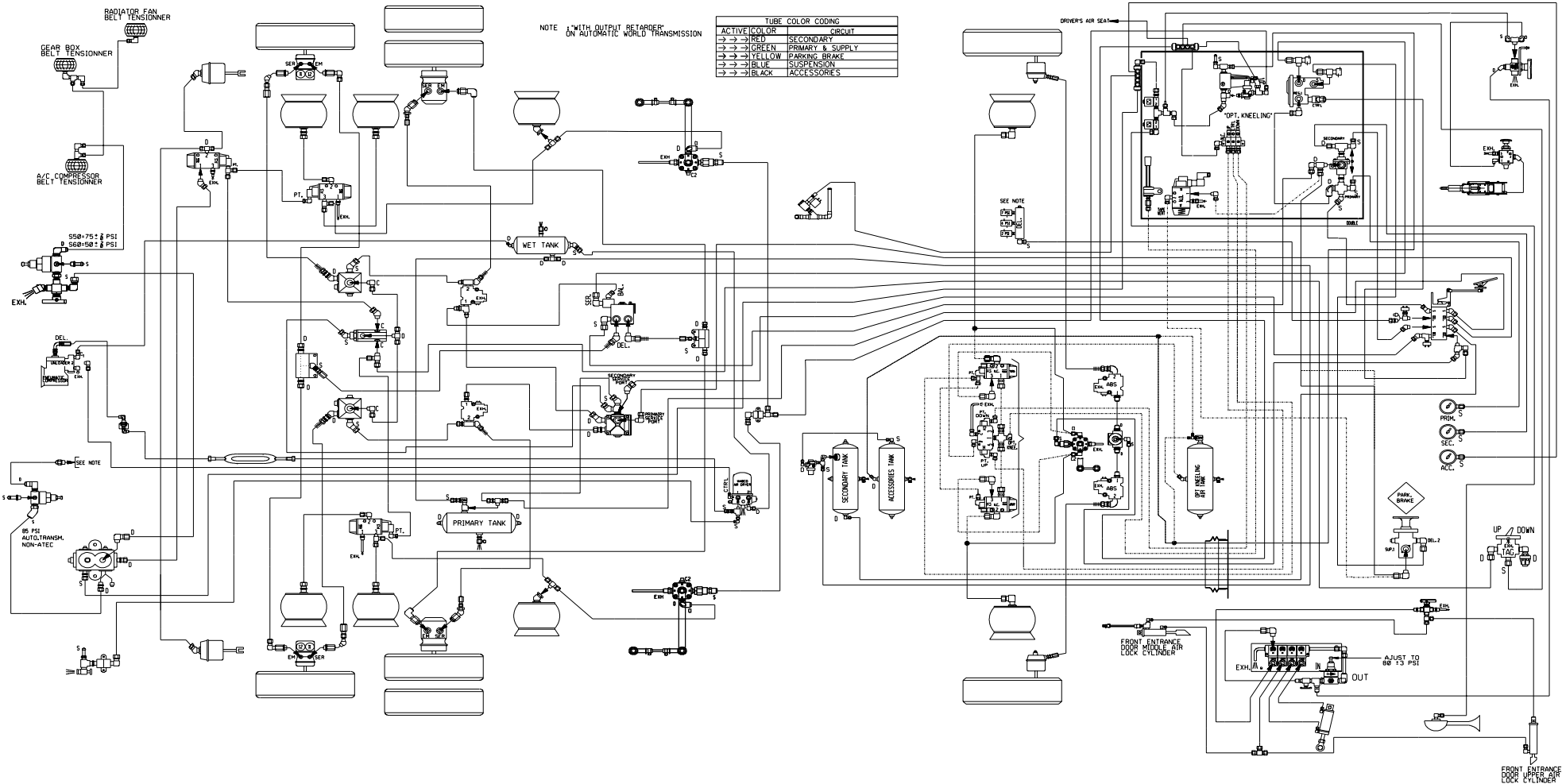
ACTIVE COLOR	CIRCUIT
→ →	INLET
→ →	OUTLET
→ →	SECONDARY
→ →	PRIMARY & SUPPLY
→ →	PARKING BRAKE
→ →	SUSPENSION
→ →	ACCESSORIES

NOTE: WITH OUTPUT RETARDER ON AUTOMATIC WORLD TRANSMISSION

FRONT ENTRANCE LOCK MIDDLE AIR LOCK CYLINDER

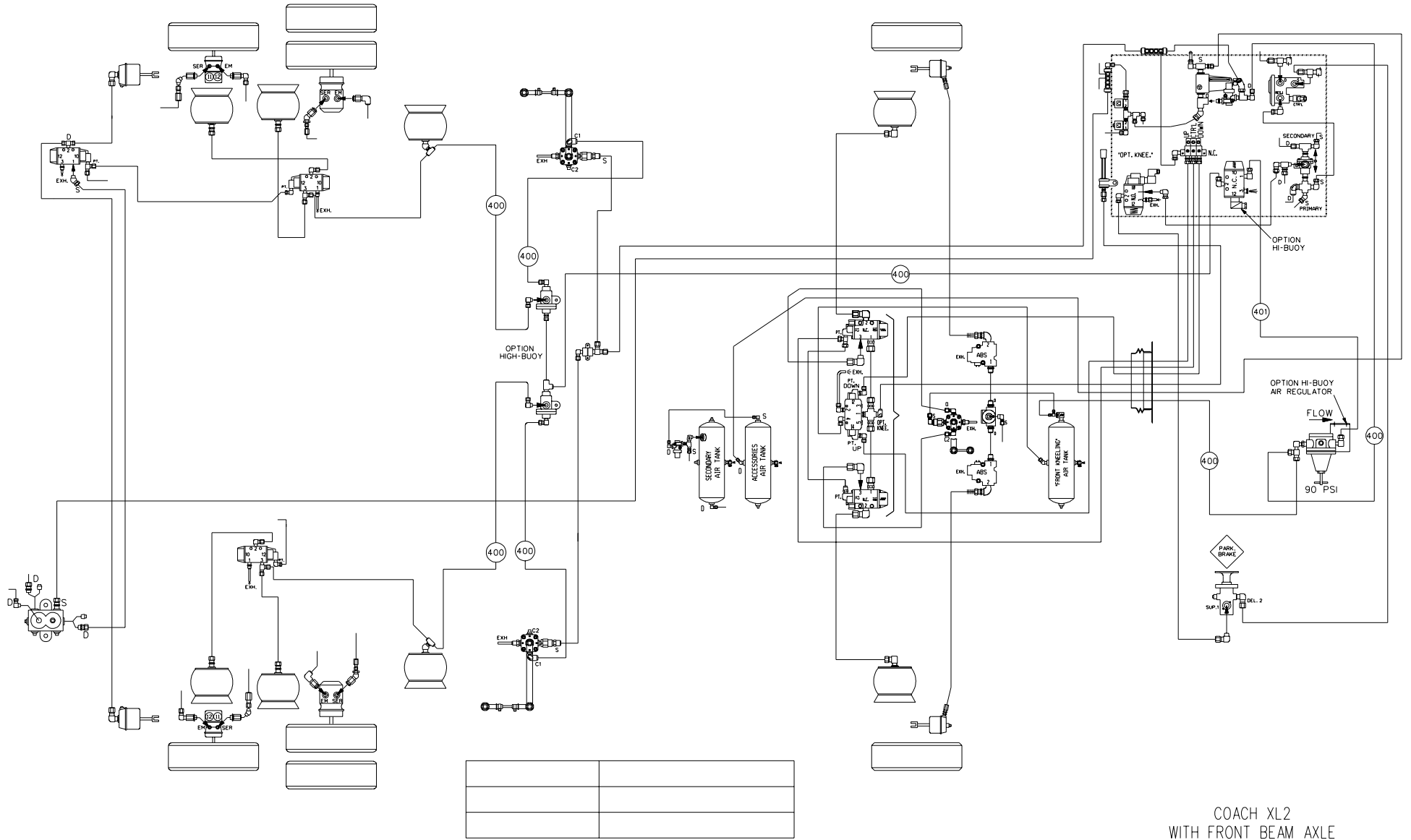
ADJUST TO 80-85 PSI

FRONT ENTRANCE LOCK UPPER AIR LOCK CYLINDER



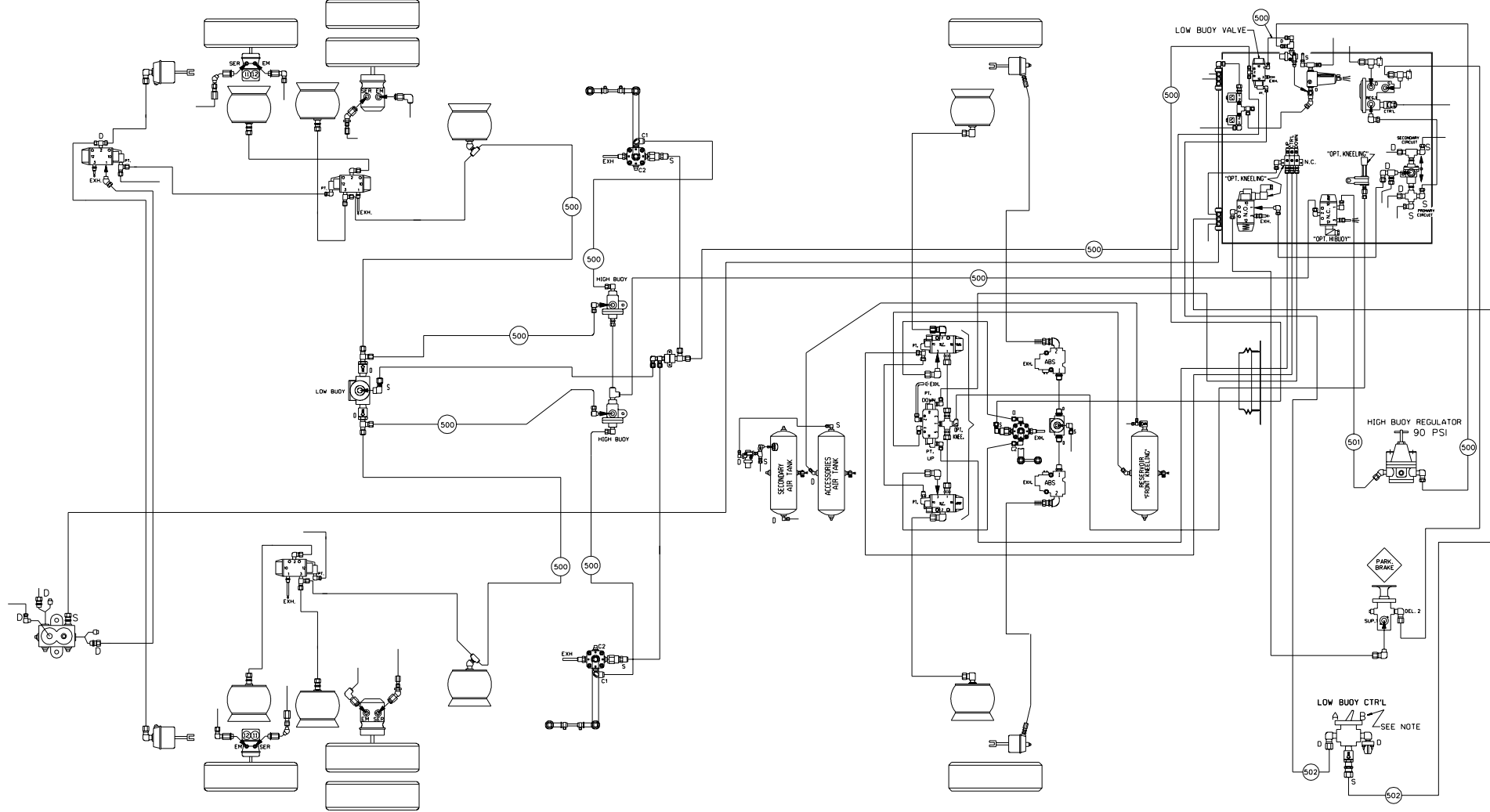
DATE: 2002-05

•D140261 P.1 REV.H
COACH XL2 4.5'
WITH FRONT BEAM AXLE



DATE=2002/03

COACH XL2
 WITH FRONT BEAM AXLE
 WITH FRONT KNEELING AND HIGH-BUOY COMBINATION
 D140261 P.4 REV.B



NOTE :

CONTROL VALVE OPT. "LOW-BUOY", "A" OR "B" SETTING:

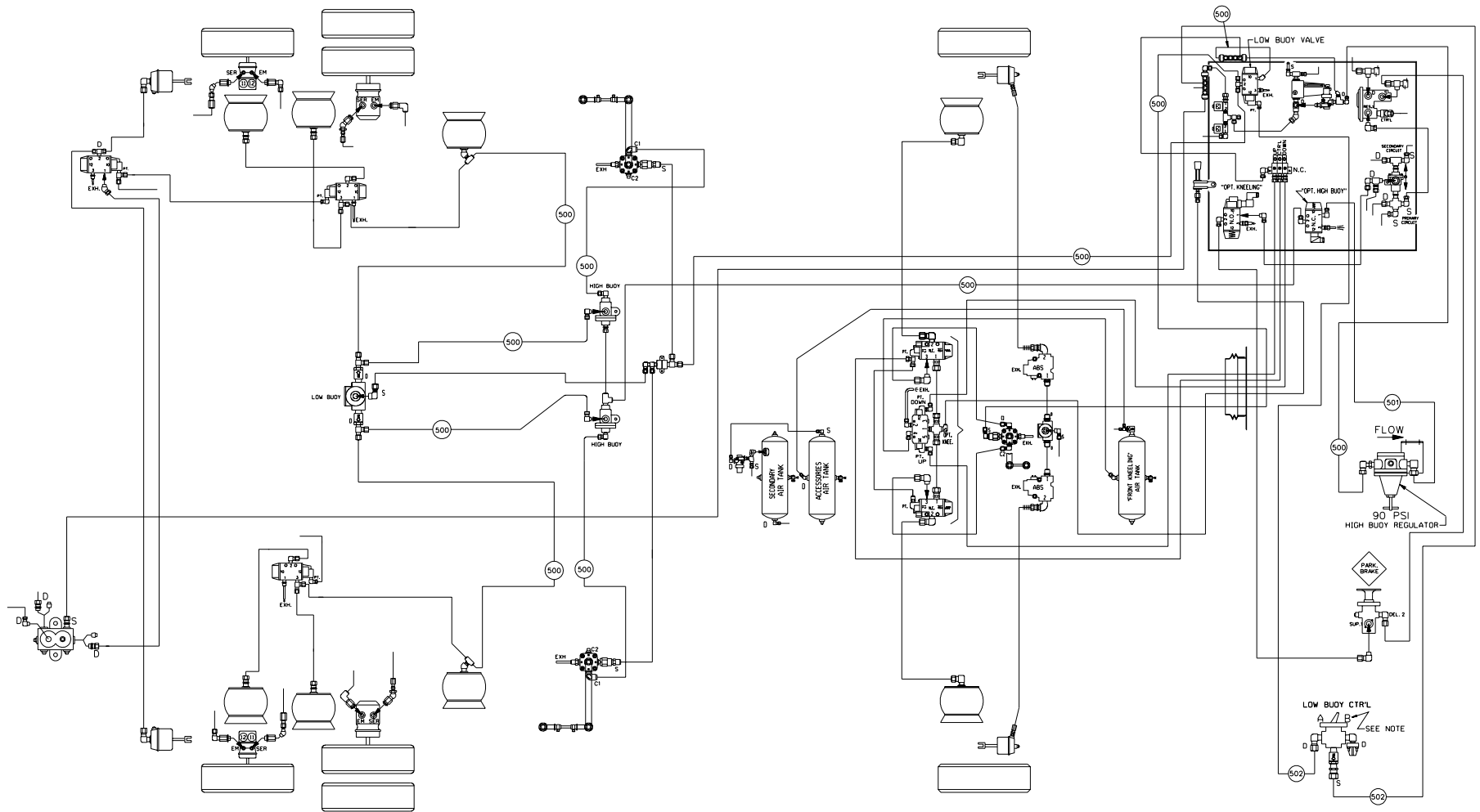
POSITION "A": VALVE OPEN .
AIR FLOW BETWEEN SUPPLY (S) AND DELIVERY (D), LOW-BUOY IS NOT IN FUNCTION.

POSITION "B": VALVE CLOSED .
AIR DOES NOT FLOW BETWEEN SUPPLY (S) AND DELIVERY (D), LOW-BUOY IS IN FUNCTION.

BASIC ON D140261 P.1 , COMPLETE DIAGRAM

ITEM	DESCRIPTION
500	3/8" O.D. BLUE TUBE
501	1/2" O.D. BLUE TUBE
502	1/4" O.D. BLUE TUBE

D140261 P.5 REV.A
 COACH XL2 45'
 FRONT BEAM AXLE SUSPENSION
 WITH OPTION FRONT KNEELING
 LOW-BUOY AND HIGH-BUOY COMBINATION



NOTE :

CONTROL VALVE OPT. "LOW-BUOY", "A" OR "B" SETTING:

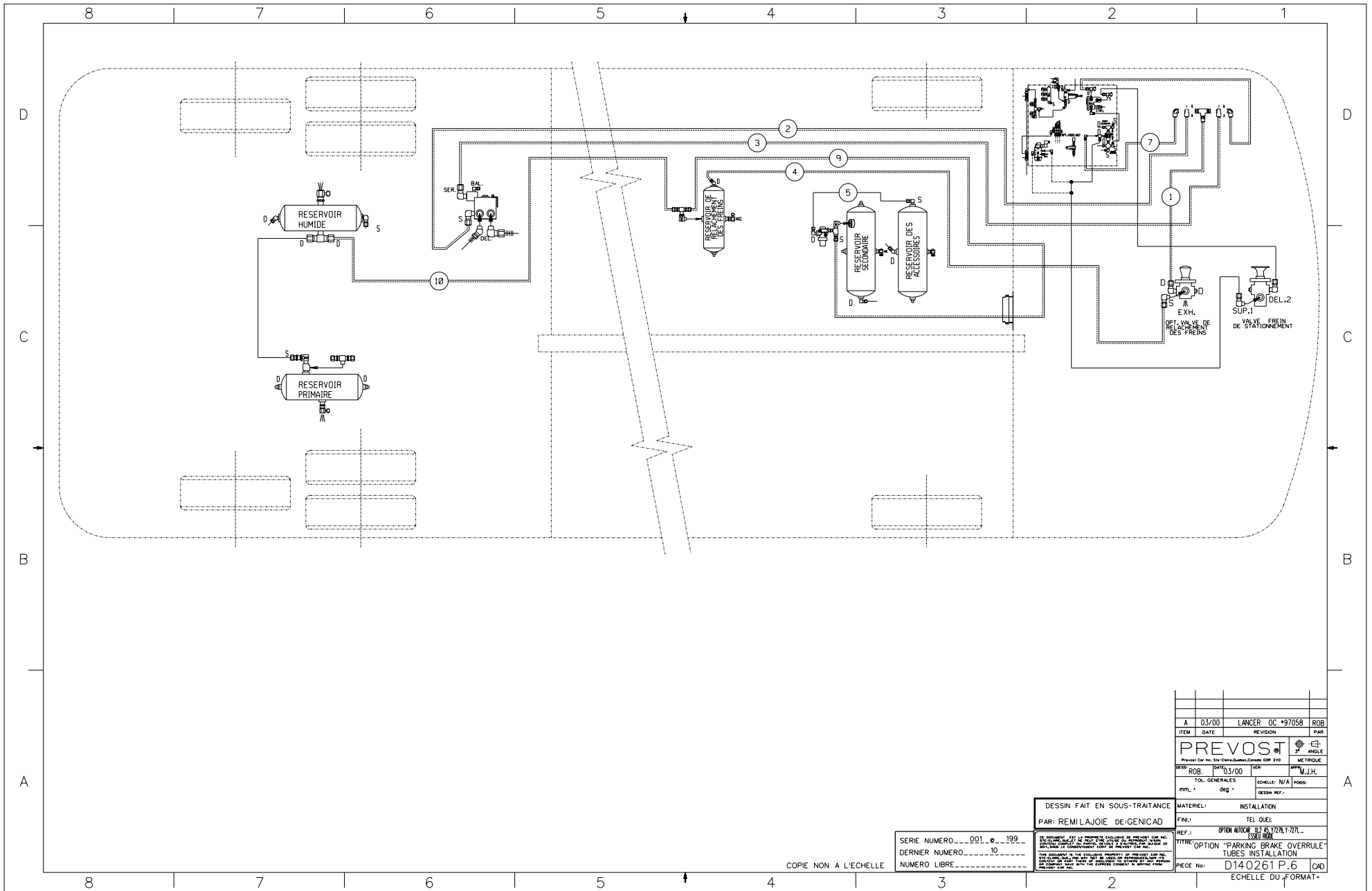
POSITION "A": VALVE OPEN .
AIR FLOW BETWEEN SUPPLY (S) AND
DELIVERY (D), LOW-BUOY IS NOT IN FONCTION.

POSITION "B": VALVE CLOSED .
AIR DOES NOT FLOW BETWEEN SUPPLY (S)
AND DELIVERY (D), LOW-BUOY IS IN FONCTION.

ITEM	DESCRIPTION
500	3/8" O.D. BLUE TUBE
501	1/2" O.D. BLUE TUBE
502	1/4" O.D. BLUE TUBE

COACH XL2 45'
FRONT BEAM AXLE SUSPENSION
WITH OPTION FRONT KNEELING
LOW-BUOY AND HIGH-BUOY COMBINATION

D140261 P.5 REV.B



COPIE NON A L'ECHELLE

SERIE NUMERO...001...199
 DERNIER NUMERO...10
 NUMERO LIBRE.....

DESSIN FAIT EN SOUS-TRAITANCE
 PAR: REMI LAJOIE DE-GENICAD

MATERIEL: _____
 INSTALLATION: _____
 TEL QUEL: _____
 REF.: OPTION "PARKING BRAKE OVERRULE"
 TUBES INSTALLATION
 ESKH 1000
 PIECE No: D14.0261 P.6 CAD

ITEM	DATE	REVISION	PAR
A	03/00	LANCER OC *97058	ROB
PREVOS			ANGLE
Projet Car No. 514-014-0000-0000-0000-0000			METRIQUE
DESIN	ROB	03/00	PAR M.J.H.
TOL. GENERALES		ECHELLE: N/A	POSS:
MIL. * 950 *		DESSIN REF.:	
ECHELLE DU FORMAT:			