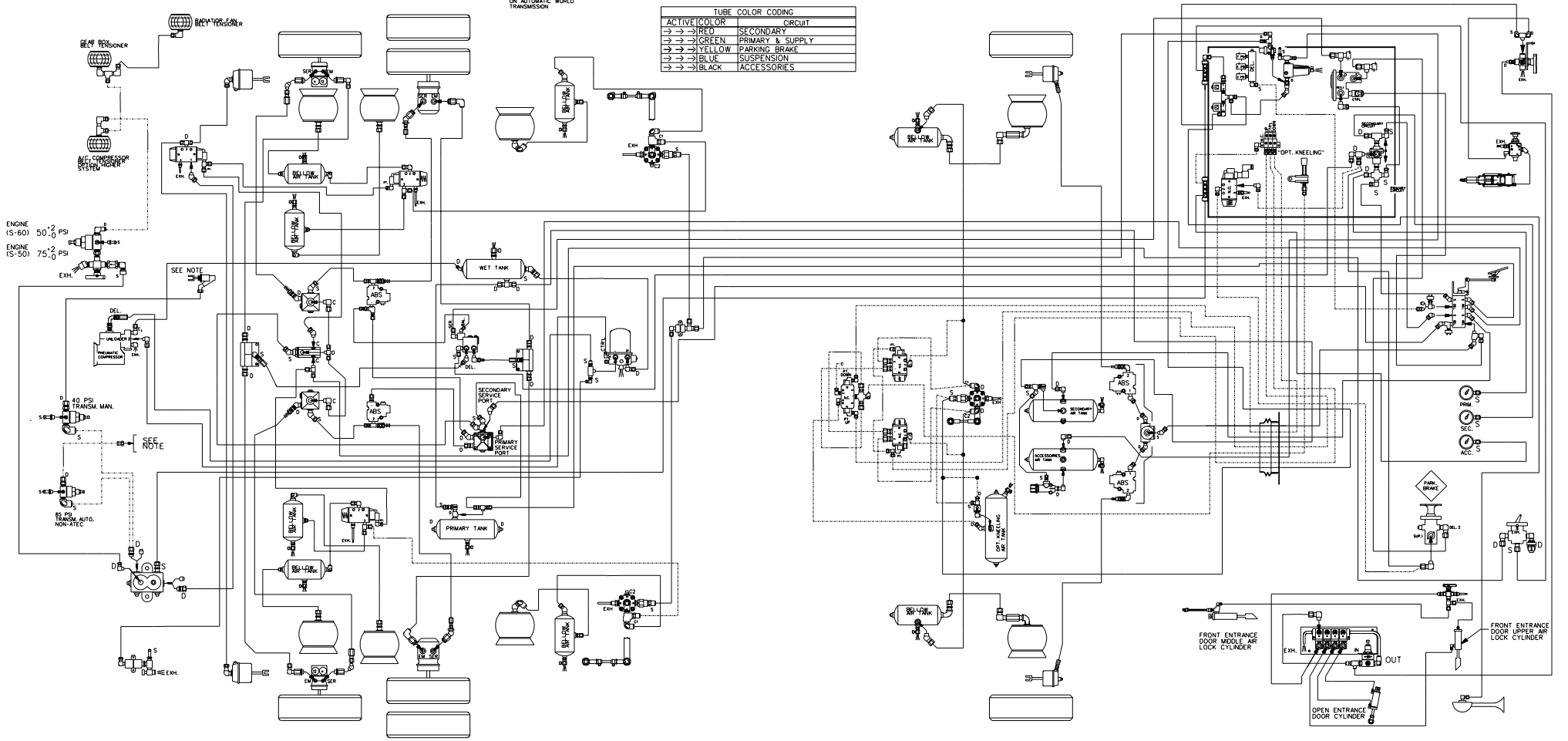


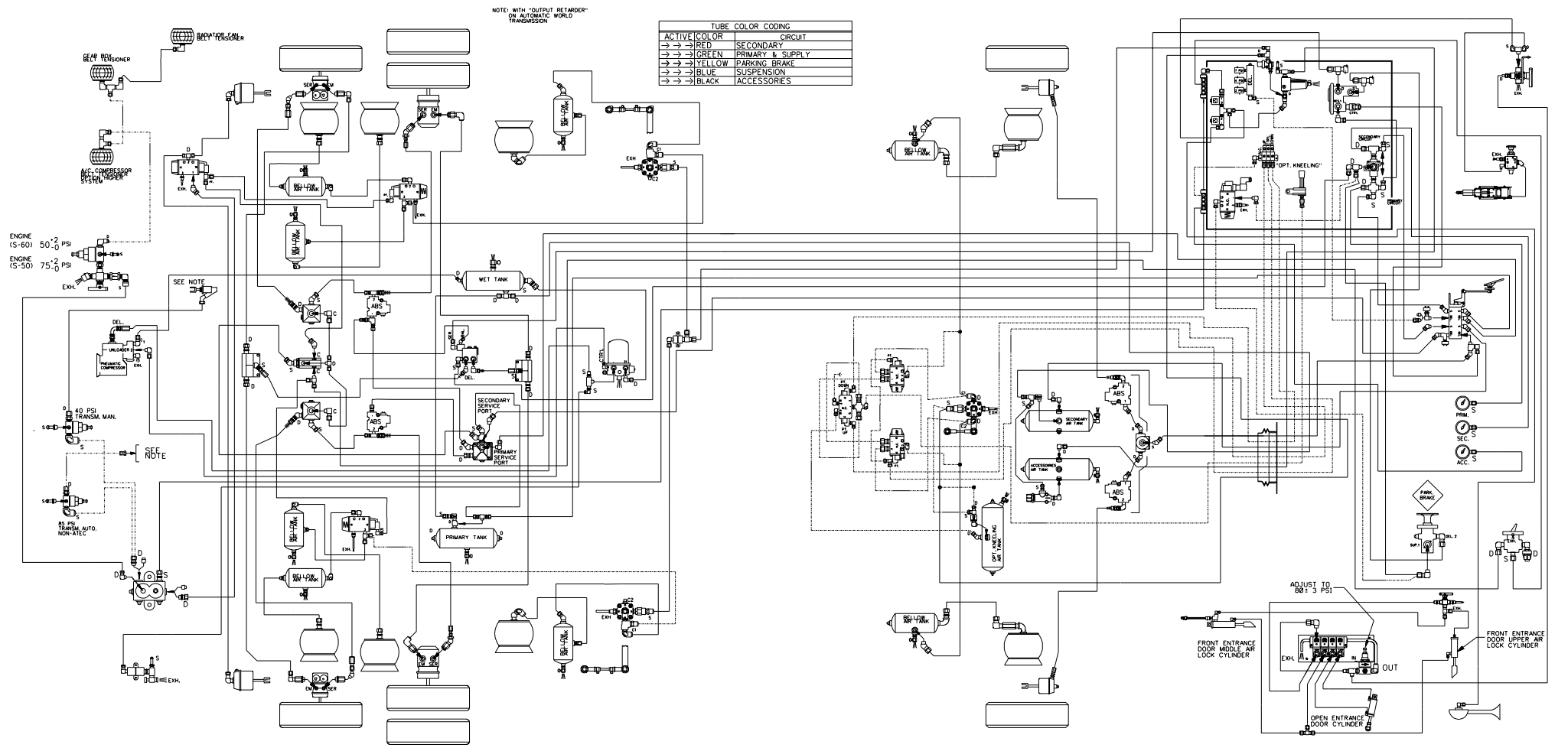
NOTE: WITH "OUTPUT RETARDER" ON AUTOMATIC WORLD TRANSMISSION

ACTIVE COLOR	CIRCUIT
→ → → RED	SECONDARY
→ → → GREEN	PRIMARY & SUPPLY
→ → → YELLOW	PARKING BRAKE
→ → → BLUE	SUSPENSION
→ → → BLACK	ACCESSORIES



DATE: 12-1999

#D140256 P.1 REV.B
 COACH XL2 45' (I.S.S.)
 INDEPENDENT SUSPENSION SYSTEM



NOTE: WITH "OUTPUT RETARDER" ON AUTOMATIC WORLD TRANSMISSION

ACTIVE COLOR	CIRCUIT
→ → RED	SECONDARY
→ → GREEN	PRIMARY & SUPPLY
→ → YELLOW	PARKING BRAKE
→ → BLUE	SUSPENSION
→ → BLACK	ACCESSORIES

ENGINE (S-60) 50.2 PSI
ENGINE (S-50) 75.2 PSI

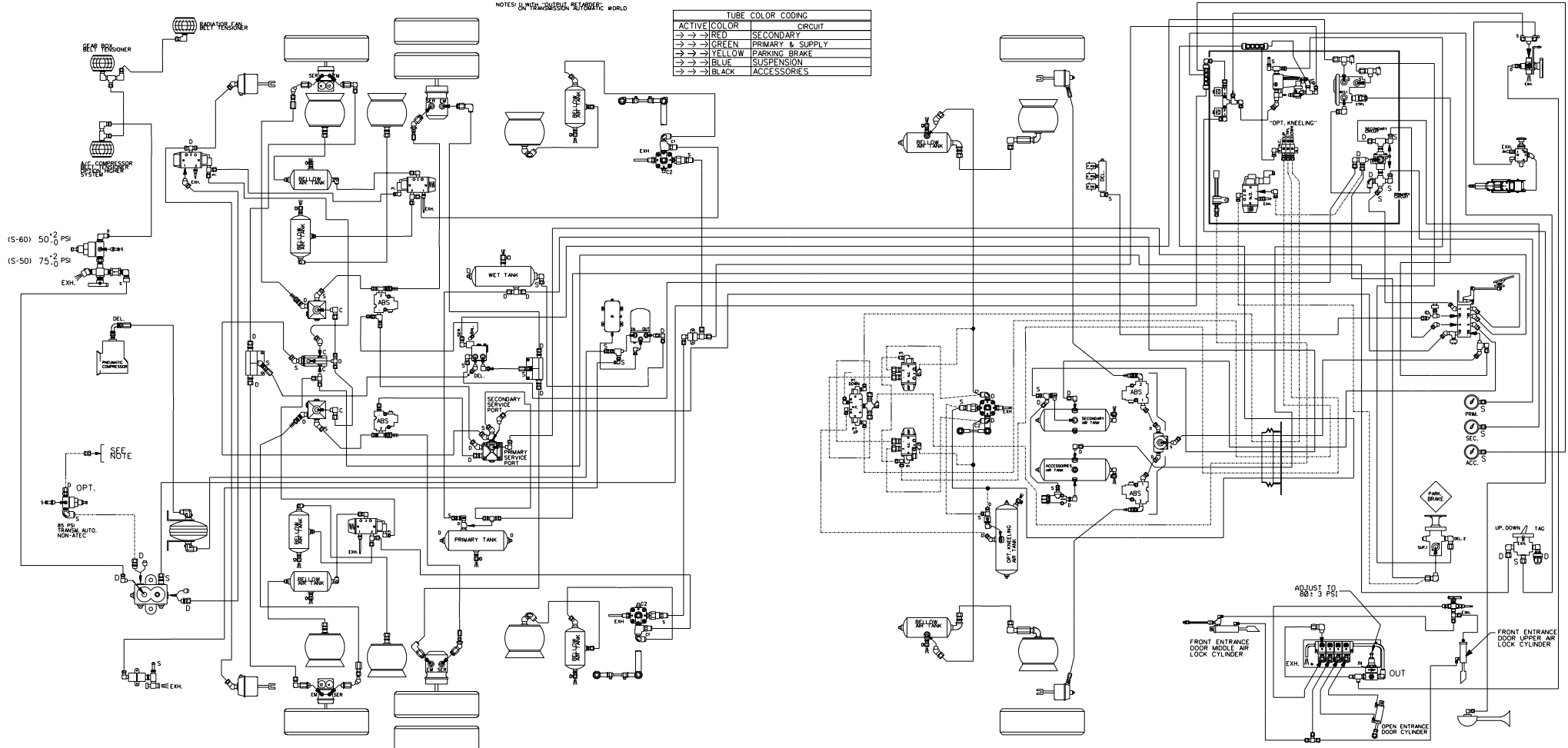
40 PSI TRNSM. MAN.
25 PSI TRNSM. AUTO. NON-ALL-CLC.

DATE: 07-2000

#D140256 P.1 REV.D
COACH XL2 45' (I.S.S.)
INDEPENDENT SUSPENSION SYSTEM

NOTES: IN THIS SYSTEM, SEPARATE WORLD

TUBE COLOR CODING	
ACTIVE COLOR	CIRCUIT
→ → → RED	SECONDARY
→ → → GREEN	PRIMARY & SUPPLY
→ → → YELLOW	PARKING BRAKE
→ → → BLUE	SUSPENSION
→ → → BLACK	ACCESSORIES

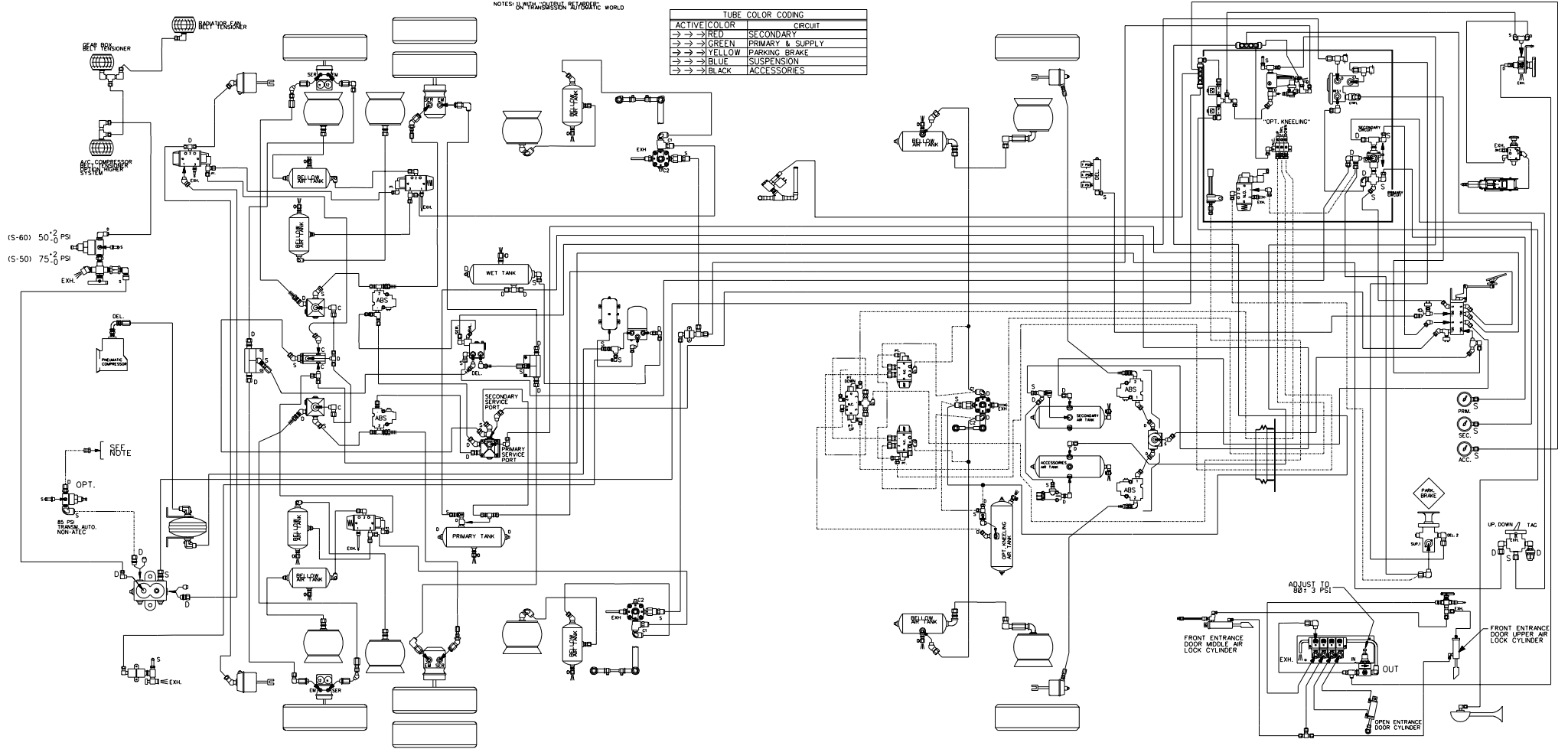


DATE: 2001-06

•D140256 P.1 REV.G
 COACH XL2 45' (I.S.S.)
 INDEPENDENT SUSPENSION SYSTEM

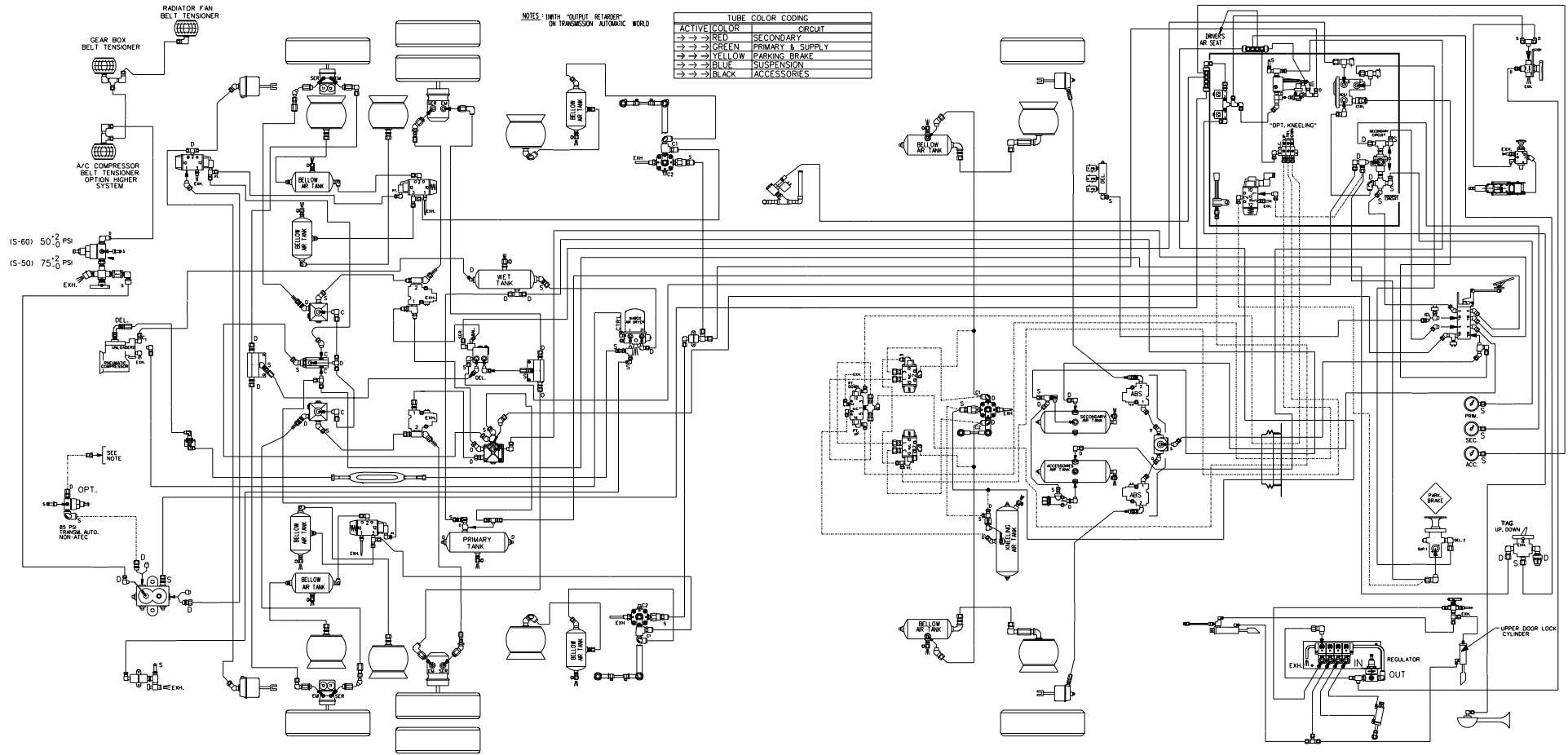
NOTES: 1. 2. 3. 4. 5. 6. 7. 8. 9. 10. 11. 12. 13. 14. 15. 16. 17. 18. 19. 20. 21. 22. 23. 24. 25. 26. 27. 28. 29. 30. 31. 32. 33. 34. 35. 36. 37. 38. 39. 40. 41. 42. 43. 44. 45. 46. 47. 48. 49. 50. 51. 52. 53. 54. 55. 56. 57. 58. 59. 60. 61. 62. 63. 64. 65. 66. 67. 68. 69. 70. 71. 72. 73. 74. 75. 76. 77. 78. 79. 80. 81. 82. 83. 84. 85. 86. 87. 88. 89. 90. 91. 92. 93. 94. 95. 96. 97. 98. 99. 100.

ACTIVE COLOR	CIRCUIT
→ → → RED	SECONDARY
→ → → GREEN	PRIMARY & SUPPLY
→ → → YELLOW	PARKING BRAKE
→ → → BLUE	SUSPENSION
→ → → BLACK	ACCESSORIES



DATE: 2001-12

#D140256 P.1 REV.H
 COACH XL2 45' (I.S.S.)
 INDEPENDENT SUSPENSION SYSTEM



NOTES: *WITH "OUTPUT REARDED" ON TRANSMISSION AUTOMATIC *WORLD

TUBE COLOR	CIRCUIT
→ RED	SECONDARY
→ GREEN	PRIMARY & SUPPLY
→ YELLOW	PARKING BRAKE
→ BLUE	SUSPENSION
→ BLACK	ACCESSORIES

(S-60) 50 PSI

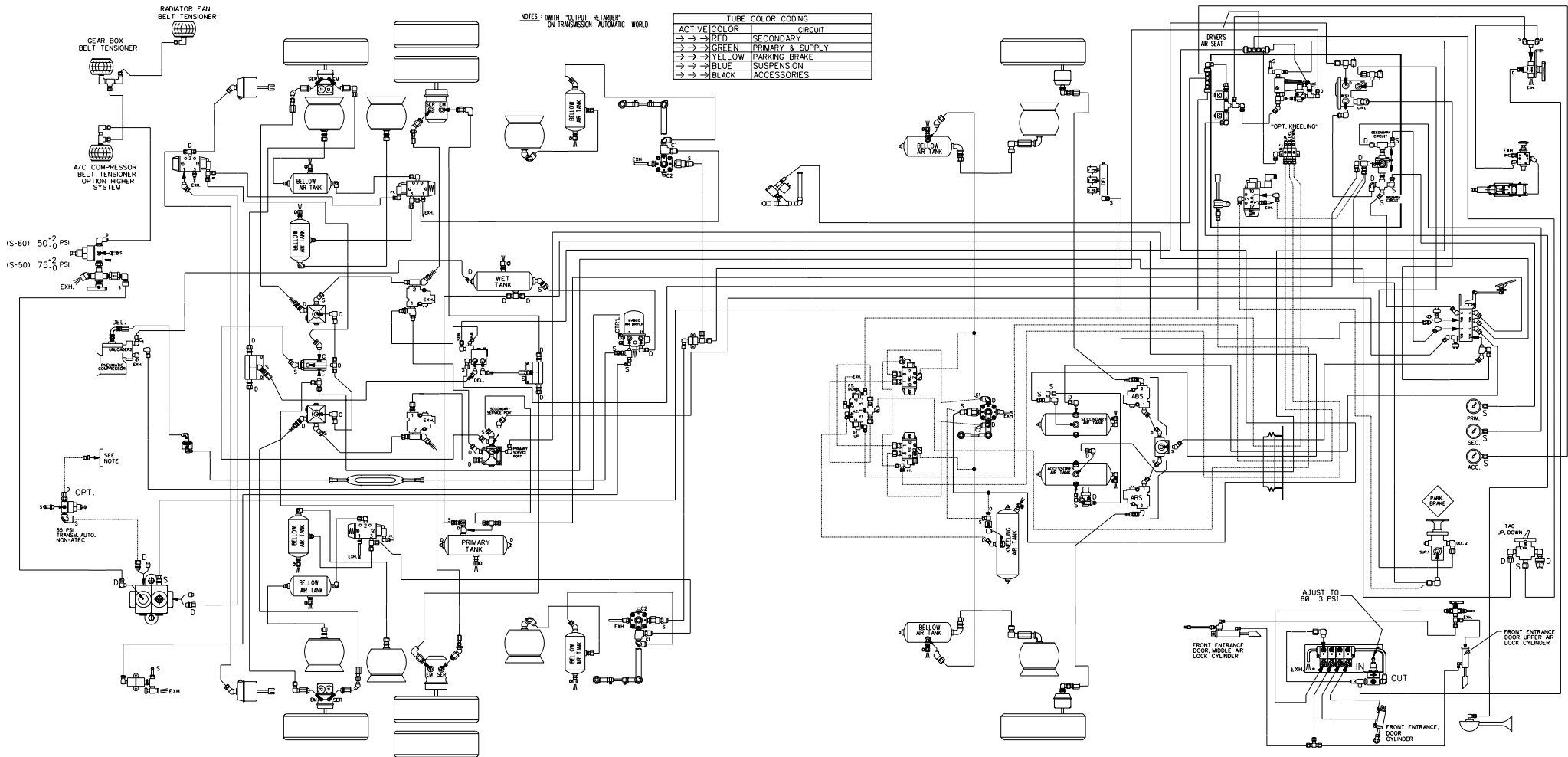
(S-50) 75 PSI

SEE NOTE

OPT. 55 PSI TRANS. AUTO. NON-AIRC.

D140256 P.1 REV.1
 COACH XL2 SERIES 60
 INDEPENDENT FRONT SUSPENSION (I.F.S.)

DATE: 05/2002



NOTES: WITH "OUTPUT RETARDER" ON TRANSMISSION AUTOMATIC WORLD

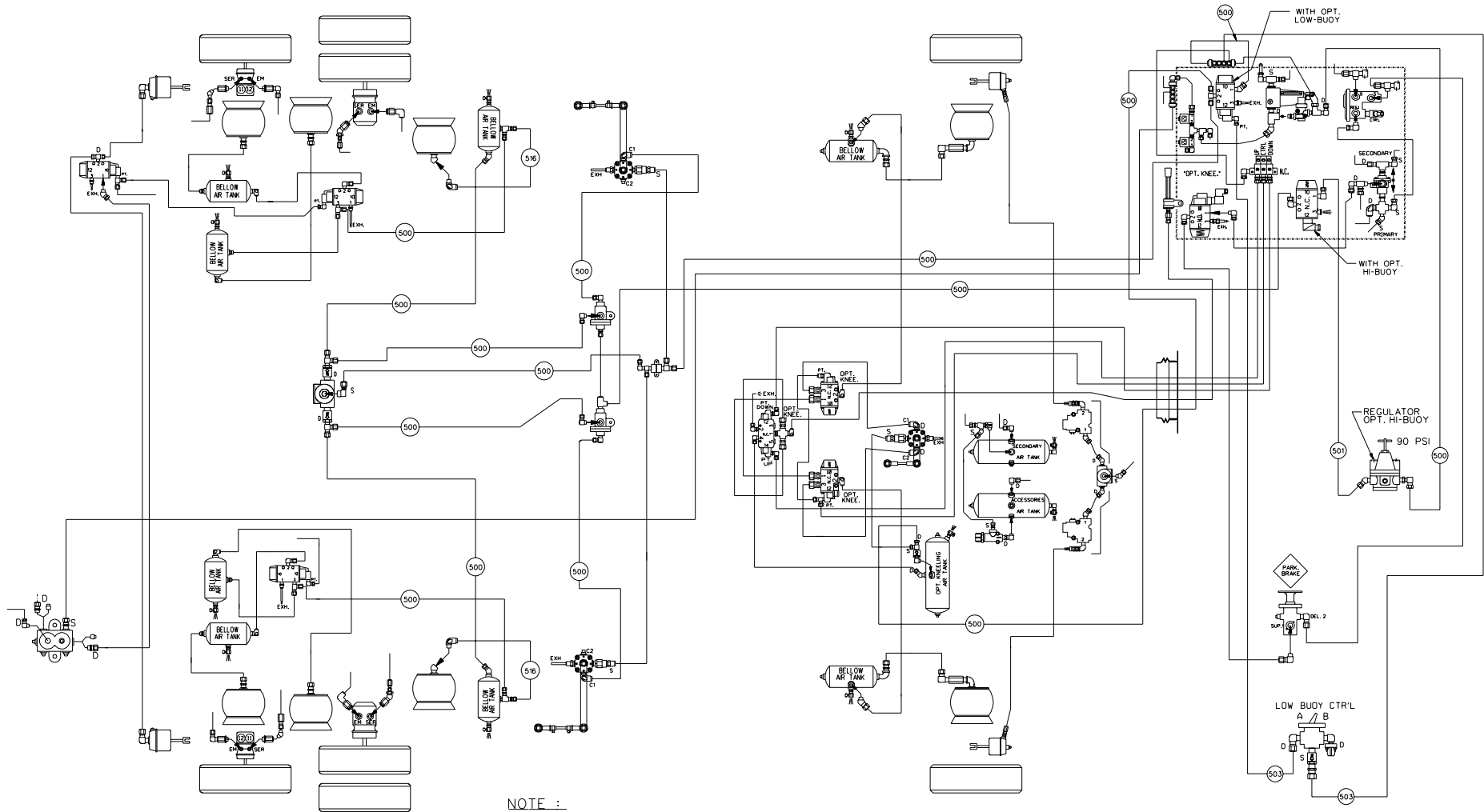
ACTIVE	COLOR	CIRCUIT
→ →	RED	SECONDARY
→ →	GREEN	PRIMARY & SUPPLY
→ →	YELLOW	PARKING BRAKE
→ →	BLUE	SUSPENSION
→ →	BLACK	ACCESSORIES

(S-60) 50.0 PSI

(S-50) 75.0 PSI

D140256 P.1 REV.J
 COACH XL2
 SERIE 60 ENGINE
 INDEPENDENT FRONT SUSPENSION (I.F.S.)

DATE: 2003-01



ITEM	DESCRIPTION
500	3/8" O.D. BLUE
501	1/2" O.D. BLUE
516	3/4" O.D. BLACK
503	1/4" O.D. BLACK

NOTE :

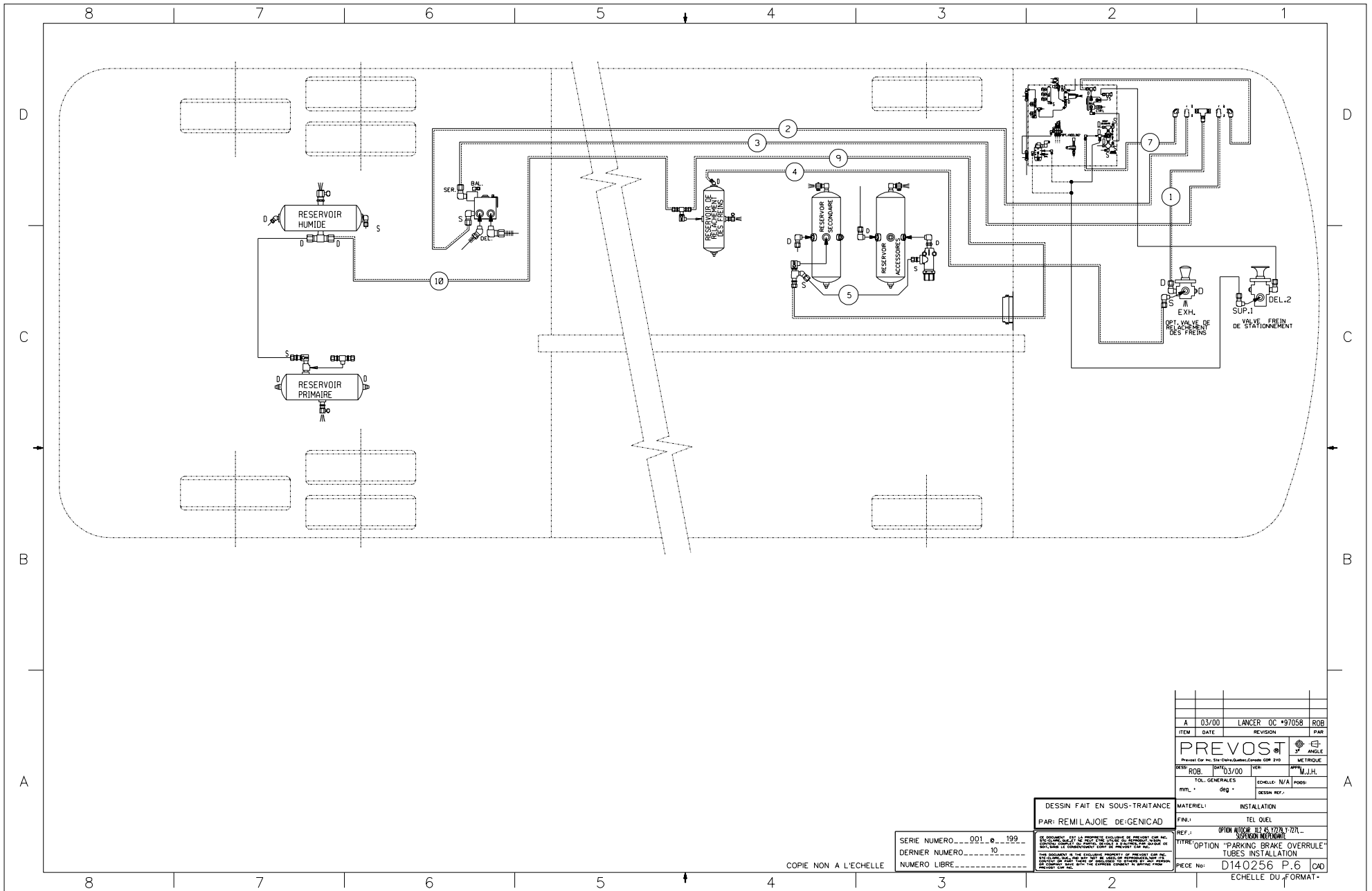
CONTROL VALVE OPT. "LOW-BUOY", "A" OR "B" SETTING:

POSITION "A": VALVE OPEN .
AIR FLOW BETWEEN SUPPLY (S) AND DELIVERY (D), LOW-BUOY IS NOT IN FONCTION.

POSITION "B": VALVE CLOSED .
AIR DOES NOT FLOW BETWEEN SUPPLY (S) AND DELIVERY (D), LOW-BUOY IS IN FONCTION.

COACH XL2
WITH INDEPENDENT SUSPENSION (I.S.S.)
WITH FRONT KNEELING , LOW-BUOY
AND HIGH-BUOY COMBINATION

D140256 P.5 REV.B



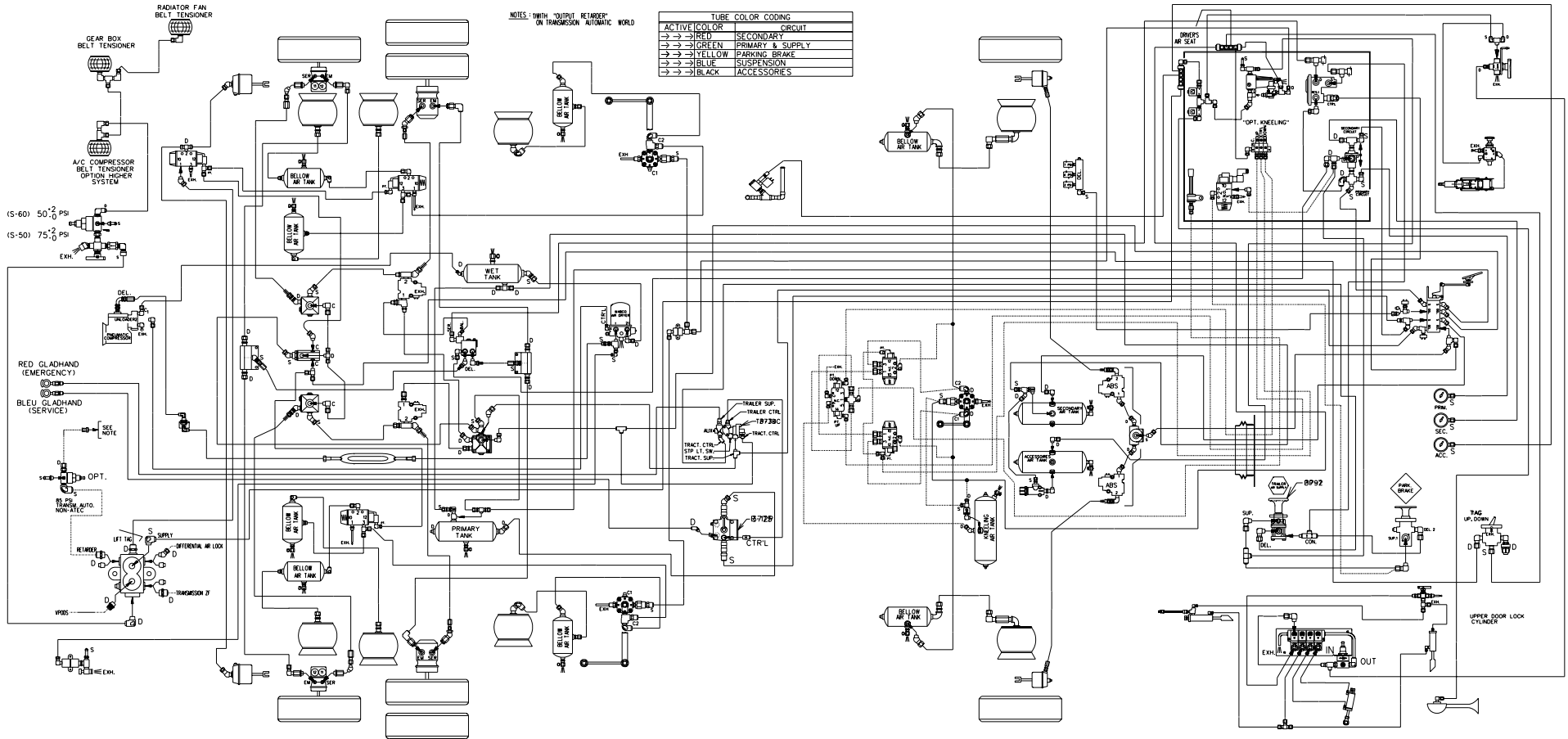
COPIE NON A L'ECHELLE

SERIE NUMERO...001...199
 DERNIER NUMERO...10
 NUMERO LIBRE.....

DESSIN FAIT EN SOUS-TRAITANCE
 PAR: REMI LAJOIE DE-GENICAD

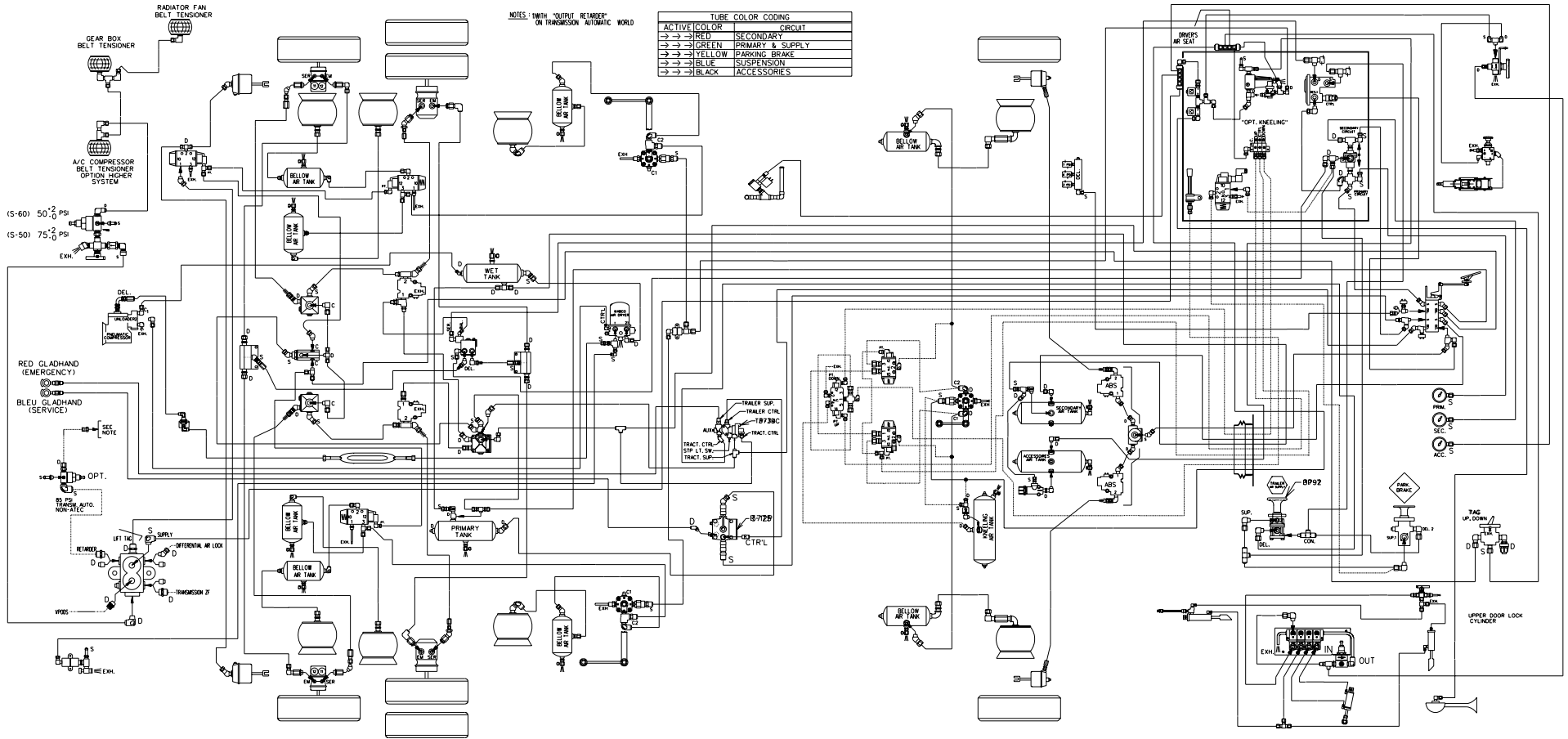
MATERIEL: TEL QUEL
 REF.: OPTION "PARKING BRAKE OVERRULE"
 TUBES INSTALLATION

ITEM	DATE	REVISION	PAR
A	03/00	LANCER OC *97058	ROB
PREVOST			ANGLE
<small>PREVOST Car Inc. 511-Cheval-Quatre-Combes QUP 2VD</small>			METRIQUE
DESIN	ROB	03/00	VER. AMI M.J.H.
TOL. GENERALES		ECHELLE: N/A	POSS:
MIL. *		950 *	DESSIN REF.:
MATERIEL:		INSTALLATION	
PAR: REMI LAJOIE DE-GENICAD		TEL QUEL	
REF.:		OPTION "PARKING BRAKE OVERRULE"	
TUBES INSTALLATION		REF.:	
PIECE No:		D140256 P. 6 CAD	
ECHELLE DU FORMAT:			



DATE: 10/2002

D140256 P.9 REV.A
ORLEANS COACH XL2 SERIES 60
INDEPENDENT FRONT SUSPENSION (I.F.S.)



DATE: 11/2002

D140256 P.9 REV.B
ORLEANS COACH XL2 SERIES 60
INDEPENDENT FRONT SUSPENSION (I.F.S.)