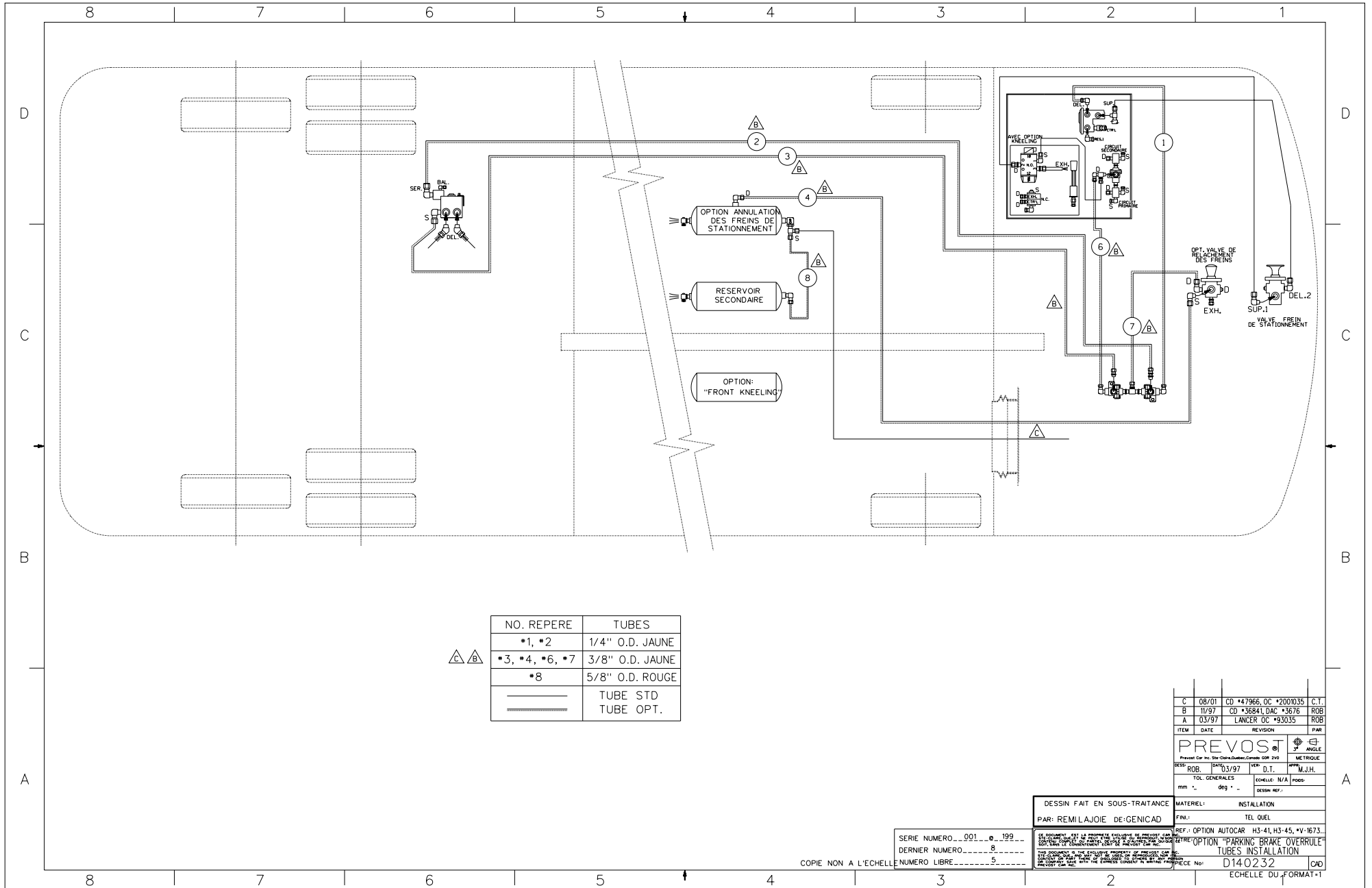




BALLOON	PIPE
#1	1/4" O.D. YELLOW
#2	3/8" O.D. YELLOW
#3	5/8" O.D. RED
—	STD PIPING
- - -	OPT. PIPING

H3-41 & H3-45 COACH  
 OPTION PARKING BRAKES  
 OVERRULE INST.  
 DI40232 REV. A



NO. REPÈRE	TUBES
*1, *2	1/4" O.D. JAUNE
*3, *4, *6, *7	3/8" O.D. JAUNE
*8	5/8" O.D. ROUGE
	TUBE STD
	TUBE OPT.

C	08/01	CD	*47966, OC	*2001035	C.T.
B	11/97	CD	*36841, DAC	*3676	ROB
A	03/97	LANCER	OC	*93035	ROB
ITEM	DATE	REVISION	PAR		
<b>PREVOST</b>					
Prestat Car Inc. 514-336-6666 / 514-336-6667					
RESS:	ROB	03/97	VER	D.T.	APP. M.J.H.
TOL. GENERALES			ECHELLE: N/A		
mm	°	deg	1	mm	DESIGN REF.
DESSIN FAIT EN SOUS-TRAITANCE			MATERIEL: INSTALLATION		
PAR: REMILAJAJOE DE GENICAD			FINI: TEL QUEL		
SERIE NUMERO...001...0...199...			REF.: OPTION AUTOCAR H3-41, H3-45, VV-1673...		
DERNIER NUMERO...0...			REF.: OPTION "PARKING BRAKE OVERRULE"		
NUMERO LIBRE...5...			TUBES INSTALLATION		
			PIECE No: D140232		
			ECHELLE DU FORMAT: 1		

COPIE NON A L'ECHELLE