

CODE DE COULEURS POUR TUBES

ACTIF	ROUGE	SECONDAIRE
VERT	BRUN	PRIMAIRE ET ALIMENTATION
BLEU	NOIR ou BLANC	FREIN DE STATIONNEMENT
		SUSPENSION STANDARD
		ACCESSOIRES
JAUUNE		CONTROLE DU COMPRESSEUR

LES LIGNES POINTILLEES ACCESSOIRES ONT UN CODE DE COULEUR TOUS NOIR, SAUF A EXCEPTION DU 'B' mm BLANC.
 LES LIGNES POINTILLEES REPRESENTENT LES TUBES A AIR POUR DES RACCORDES DE TYPE: PUSH-TO CONNECT
 LES LIGNES DOUBLES REPRESENTENT DES BOYAUX FLEXIBLES.

DESCRIPTION VEHICULE: -AUTOCAR X3 SUSPENSION RIGIDE AVEC "KNEELING"
 -TRANSMISSION WORLD AVEC "RETARDER"
 -SYSTEME DE FREINS ABS 8 AVEC "PARKING BRAKES OVERRULE"
 -ASSECHEUR D'AIR HALDEX DOUBLE DANS LE SEPARATEUR D'HUILE
 -CONNECTEURS DE REMORQUAGE PARE-CHOC AVANT
 -PORTE D'ENTREE DOUBLE AVEC SYSTEME D'ENCLICHEMENT DES FREINS
 -AVEC BARRURE A AIR DE PORTE CENTRALE POUR MONTE-PERSONNE.
 -COMPRESSEUR A AIR WABCO SUR MOTEUR VOLVO
 -SYSTEME DE DELESTAGE DE LA SUSPENSION DE L'ESSIE AUXILIAIRE.

NOTE 1 : Soxx ET Sexx SIGNIFIE LE NUMERO CONNECTEUR ELECTRIQUE
 NOTE 2 : RACCORDER A AIR D'USINE, REMPLIR LE SYSTEME PNEUMATIQUE DU VEHICULE A 140 PSIG MAXIMUM

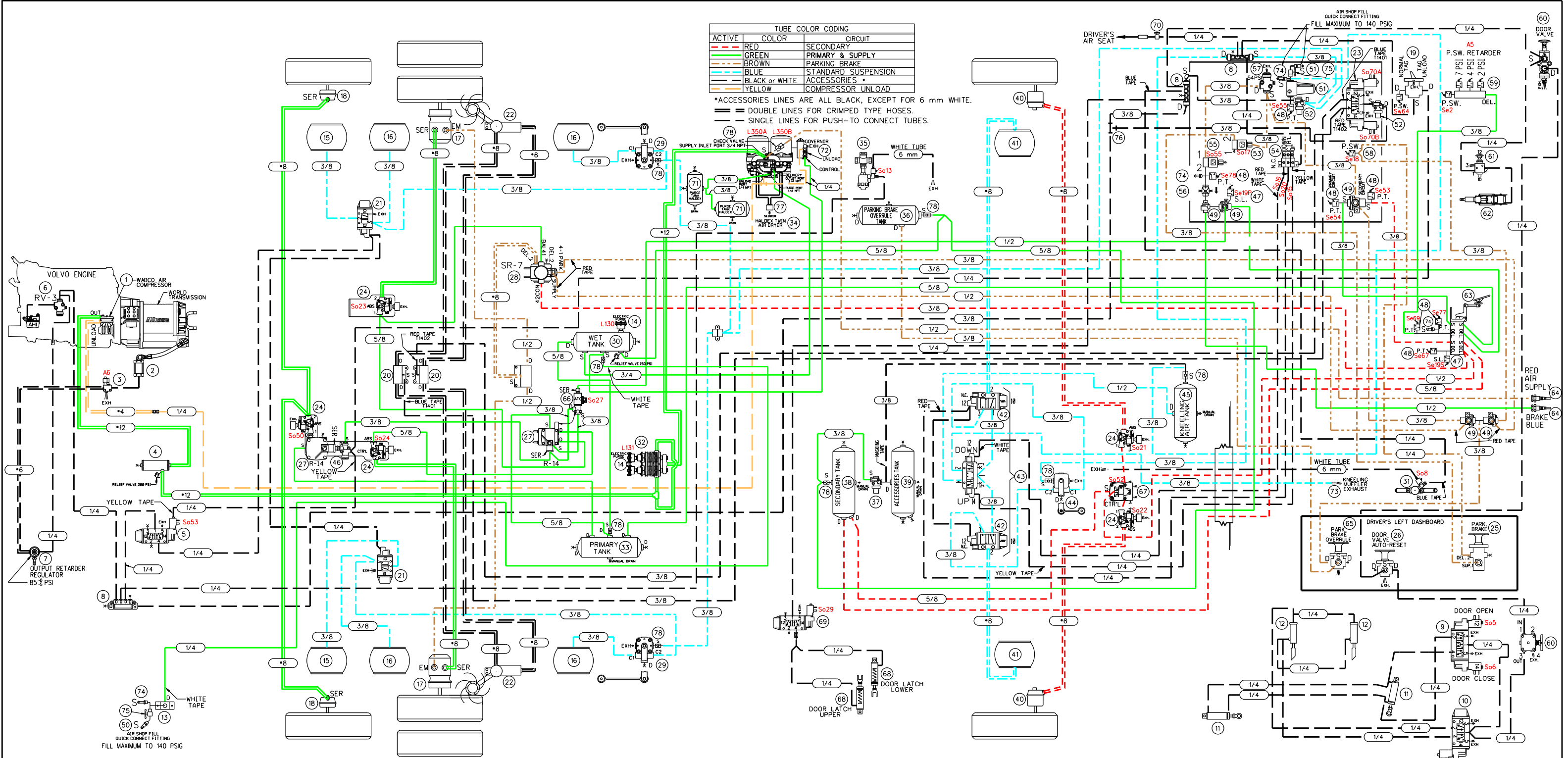
SERIE NUMERO:	001 0 199
DERNIER NUMERO:	110
NUMERO LIBRE:	0

LEGENDE:

*RES-11	RESERVOIR SERVICE	*S.L.-1	STOP AIR D'ENTREE
*EM	EMERGENCY	*P.T.-1	PRESSION MAX
*EXH	EXHAUST	*S.L.-2	PRESSION MIN
*BAL	BALANCE	*D	DIRIGEE
		*S	SOLENOIDE
		*SP	SPRING

REV	DATE	DESCRIPTION	PAR
A	2020/09	O.C.*2018165	Rob
<p>PREVOST</p> <p>Prevost Car Inc. Site: Châteauguay, Québec G0R 2V0</p> <p>TECH. NO.: Rob 2020-09-28</p> <p>VOY. GENERALES: mm ± N/A deg L N/A</p> <p>MATERIEL: INSTALLATION</p> <p>FINI: N/A</p> <p>REF.: MOTEUR VOLVO SUSPENSION RIGIDE</p> <p>TITRE: SCHEMA PNEUMATIQUE AUTOCAR X3-45 NYCT</p> <p>PIECE NO: D140445 P1</p>			

CE DOCUMENT EST LA PROPRETE EXCLUSIVE DE PREVOST CAR INC. SIE-CLIENT, QUEL ET NE PEUT ETRE UTILISE OU REPRODUIT, MISEN CONTENU COMPLET OU PARTIEL DEVOLE A D'AUTRES, PAR OUQUE CE SOIT, SANS LE CONSENTEMENT ECRIT DE PREVOST CAR INC.



ACTIVE	COLOR	CIRCUIT
RED	RED	SECONDARY
GREEN	GREEN	PRIMARY & SUPPLY
BROWN	BROWN	PARKING BRAKE
BLUE	BLUE	STANDARD SUSPENSION
BLACK or WHITE	BLACK or WHITE	ACCESSORIES
YELLOW	YELLOW	COMPRESSOR UNLOAD

*ACCESSORIES LINES ARE ALL BLACK, EXCEPT FOR 6 mm WHITE.
 — DOUBLE LINES FOR CRIMPED TYPE HOSES.
 — SINGLE LINES FOR PUSH-TO CONNECT TUBES.

020 ROTATIVE CHAIN SYSTEM BLOC MANIFOLD	040 FRONT BRAKE CHAMBER, KNORR TYPE 24	060 ENTRANCE DOOR MANUAL VALVE, NORGREN D-PRO V82	080
019 LIFT TAG AXLE VALVE BENDIX, TW-1	039 ACCESSORIES AIR TANK, JOHNSON WELDING	059 PRESSURE SWITCH N.O. ALLISON	079
018 TAG AXLE BRAKE CHAMBER, KNORR, TYPE 14	038 SECONDARY AIR TANK, JOHNSON WELDING	058 PRESSURE SWITCH N.C. KLIXON	078 CHECK VALVE
017 DRIVE AXLE BRAKE CHAMBER, KNORR TYPE 24/24	037 PROTECTION VALVE, BENDIX PR-4, 85 PSI	057 PRESSURE REDUCING VALVE, BENDIX RV-3	077 SILENCER HALDEX AIR DRYER
016 DRIVE AXLE AIR SPRING GOODYEAR, TR11	036 PARKING BRAKE OVERRULE AIR TANK, JOHNSON WELDING	056 INLINE QUICK RELEASE VALVE BENDIX, QR-L	076 FLOATING TEE FITTING
015 TAG AXLE AIR SPRING GOODYEAR, TR12	035 3-WAYS HEATER VALVE SOLENOID BURKERT, SYSTEM 2006	055 SOLENOID ENTRANCE DOOR INTERLOCK PARKER 7131	075 AIR MANUAL VALVE ON-OFF
014 ELECTRIC PURGE HALDEX OIL SEPARATOR	034 HALDEX TWIN AIR DRYER	054 MANIFOLD VALVE NORGREN D0043	074 SCHRADER VALVE 645-LB GATES
013 REAR AIR FILL VALVE	033 PRIMARY AIR TANK, JOHNSON WELDING	053 PARKING BRAKE INTERLOCK, PARKER 7131	073 KNEELING MUFFLER EXHAUST
012 ENTRANCE DOOR LOCK CYLINDER Bimba, 7/8" DIA X 5" STROKE	032 OIL SEPARATOR, HALDEX CONSEP	052 PROTECTION VALVE, BENDIX PR-4, 70 PSI	072 GOVERNOR FOR AIR COMPRESSOR WABCO
011 ENTRANCE DOOR CYLINDER Bimba, 2.5" DIA X 5" STROKE	031 2-WAYS HEATER VALVE SOLENOID ASCO, SYSTEM 2014	051 AIR FILTER ASCO NUMATICS 71035	071 PURGE TANK HALDEX WITH MANUAL DRAIN VALVE
010 ENTRANCE DOOR LOCK SOLENOID VALVE NORGREN, V60	030 WET TANK, JOHNSON WELDING	050 QUICK CONNECT FITTING AIR HOSE	070 DRIVER AIR SEAT MANUAL VALVE
009 ENTRANCE DOOR BY-FOLD SOLENOID VALVE NORGREN, V60	029 REAR HEIGHT CONTROL VALVE, BARKSDALE 52341	049 DOUBLE CHECK VALVE, BENDIX DC-4	069 WHEEL CHAIR LIFT DOOR LOCK SOLENOID VALVE NORGREN, V60
008 AIR MANIFOLD BLOC, PARKER 24M	028 I VALVE FOR PARKING BRAKE, BENDIX SR-7	048 PRESSURE TRANSDUCER, VOLVO	068 WHEEL CHAIR LIFT DOOR LOCK CYLINDER Bimba, 1.75" DIA X 1" STROKE
007 REGULATOR OUTPUT RETARDER, NORGREN RO6	027 VALVE FOR SERVICE BRAKE, BENDIX R-14	047 STOP LIGHT SWITCH, BENDIX	067 FRONT BRAKES VALVES, BENDIX RELAY VALVE ATR-6
006 PRESSURE REDUCTOR VALVE AHI, BENDIX RV-3	026 DOOR VALVE AUTO-RESET	046 INVERSION VALVE, BENDIX TR-3	066 BENDIX ATC VALVE
005 TAG UNLOAD VALVE, NORGREN V60	025 PARKING BRAKE VALVE BENDIX, PP-1	045 KNEELING AIR TANK, JOHNSON WELDING	065 EMERGENCY PARKING BRAKE OVERRULE VALVE, BENDIX RD-3
004 PING TANK, JOHNSON WELDING	024 ABS VALVE MODULATOR BENDIX M40-OR WITH SILENCER	044 FRONT HEIGHT CONTROL VALVE, BARKSDALE 52341	064 QUICK COUPLING PARKER, L2C
003 ALLISON SOLENOID VALVE	023 ROTATIVE CHAIN SYSTEM DRIVE AXLE SOLENOID	043 KNEELING SUSPENSION VALVE, NORGREN NUGGET 200	063 BRAKE VALVE PEDAL BENDIX, E-10P
002 ALLISON TRANSMISSION RETARDER CYLINDER	022 SWIVEL CHAIN UNIT WITH ARM ASSEMBLY	042 KNEELING SUSPENSION VALVE, NORGREN NUGGET 200	062 STEERING WHEEL COLUMN, ZF
001 AIR COMPRESSOR WABCO 636	021 REAR SUSPENSION VALVE NORGREN, NUGGET 200	041 FRONT AIR SPRING, GOODYEAR 1R12	061 ADJUSTABLE STEERING WHEEL MANUAL VALVE, MAC 1111A-032
ITEM DESCRIPTION	ITEM DESCRIPTION	ITEM DESCRIPTION	ITEM DESCRIPTION

VEHICLE DESCRIPTION :
 -COACH X3 WITH FRONT BEAM AXLE SUSPENSION
 -SUSPENSION FRONT KNEELING SYSTEM
 -TRANSMISSION WORLD WITH "RETARDER"
 -ABS BRAKE SYSTEM WITH "PARKING BRAKES OVERRULE"
 -HALDEX TWIN AIR DRYER WITH HALDEX OIL SEPARATOR
 -TOWING QUICK CONNECT FRONT BUMPER
 -BY-FOLD ENTRANCE DOOR WITH INTERLOCK BRAKE SYSTEM
 -WITH WHEEL CHAIR LIFT DOOR AIR LOCK
 -AIR COMPRESSOR WABCO DIRECT DRIVE ON VOLVO ENGINE
 -UNLOAD TAG SUSPENSION SYSTEM

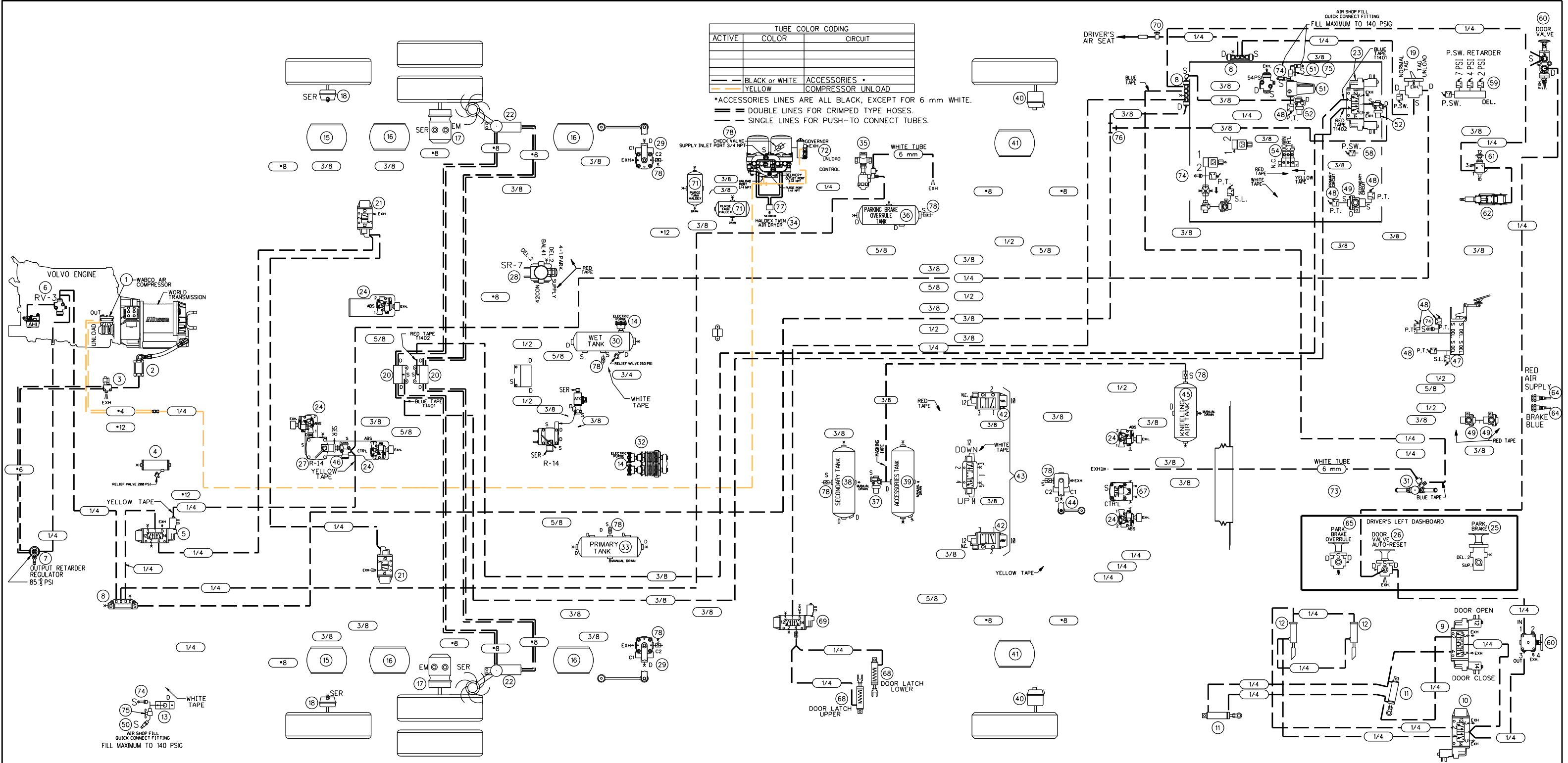
NOTE 1 : SoXX AND SoXX ARE ELECTRIC CONNECTORS NAME TAG.
 LEGENDE:
 -SER: SERVICE
 -EM: EMERGENCY
 -EXH: EXHAUST
 -BAL: BALANCE
 -RES: RESERVOIR SERVICE
 -P: PRESSURE ALIMENTATION
 -A: ACCESSOIRE (OEL)
 -D: DELIVERY (BY DELI)
 -S: ALIMENTATION (SUPPLY)
 -LL: LIFT LIFT BRID
 -R.C.: RALLY CURE
 -P.T.: PRESSURE TANK
 -P.S.: PRESSURE SWITCH
 -A: ACCESSOIRE (OEL)
 -D: DELIVERY (BY DELI)
 -S: ALIMENTATION (SUPPLY)

PREVOST

COMPLETE SYSTEM

REV.: A
 DATE: 2020/09/28

PAGE:
 D140445 P2

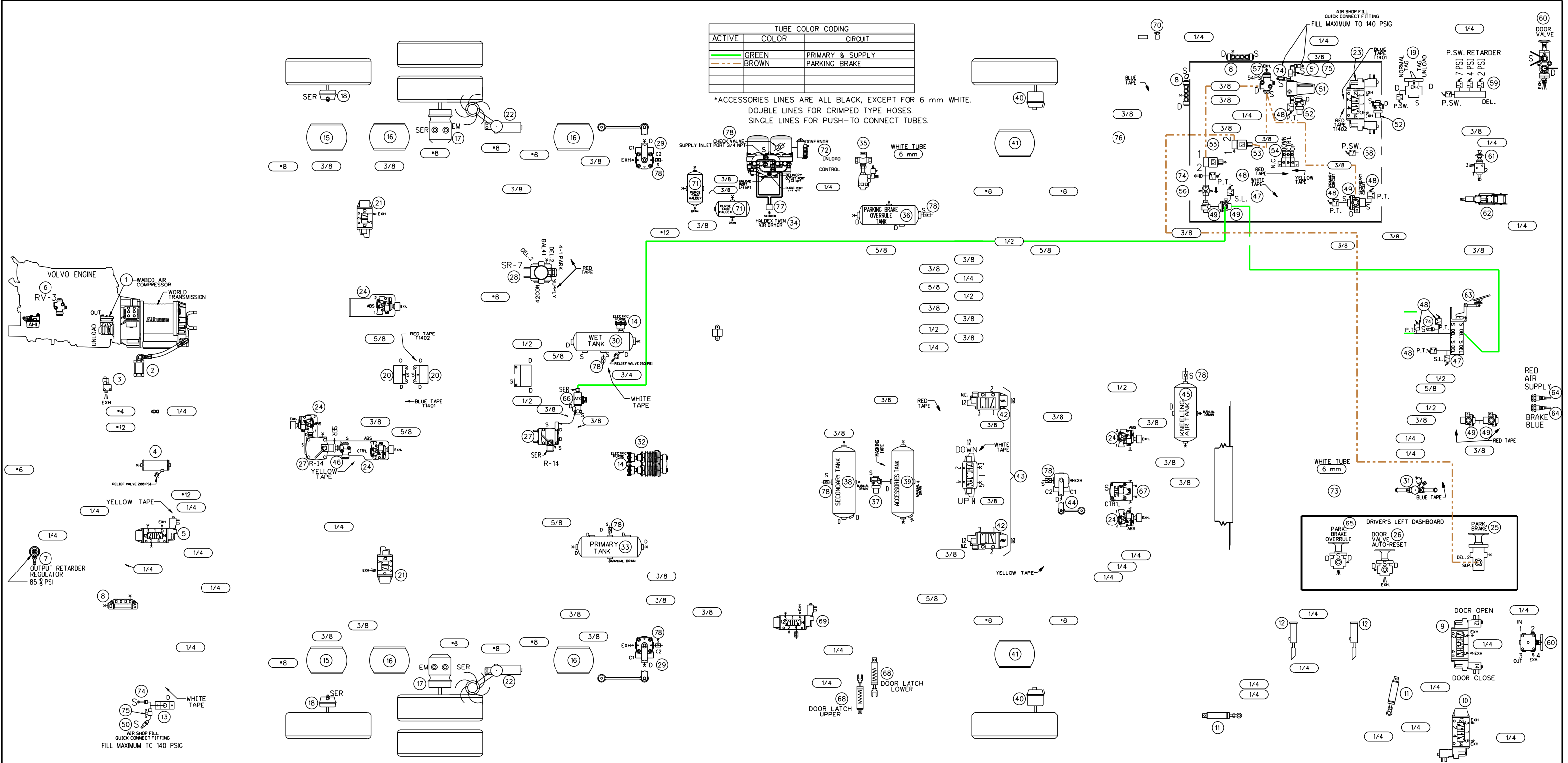


020 ROTATIVE CHAIN SYSTEM BLOC MANIFOLD	040 FRONT BRAKE CHAMBER, KNORR TYPE 24	060 ENTRANCE DOOR MANUAL VALVE, NORGREN D-PRO V82	080
019 LIFT TAG AXLE VALVE BENDIX, TW-1	039 ACCESSORIES AIR TANK, JOHNSON WELDING	059 PRESSURE SWITCH N.O. ALLISON	079
018 TAG AXLE BRAKE CHAMBER, KNORR, TYPE 14	038 SECONDARY AIR TANK, JOHNSON WELDING	058 PRESSURE SWITCH N.C. KLIXON	078 CHECK VALVE
017 DRIVE AXLE BRAKE CHAMBER, KNORR TYPE 24/24	037 PROTECTION VALVE, BENDIX PR-4, 85 PSI	057 PRESSURE REDUCING VALVE, BENDIX RV-3	077 SILENCER HALDEX AIR DRYER
016 DRIVE AXLE AIR SPRING GOODYEAR, TR11	036 PARKING BRAKE OVERRULE AIR TANK, JOHNSON WELDING	056 INLINE QUICK RELEASE VALVE BENDIX, QR-L	076 FLOATING TEE FITTING
015 TAG AXLE AIR SPRING GOODYEAR, TR12	035 3-WAYS HEATER VALVE SOLENOID BURKERT, SYSTEM 2006	055 SOLENOID ENTRANCE DOOR INTERLOCK PARKER 7131	075 AIR MANUAL VALVE ON-OFF
014 ELECTRIC PURGE HALDEX OIL SEPARATOR	034 HALDEX TWIN AIR DRYER	054 MANIFOLD VALVE NORGREN D0043	074 SCHRADER VALVE 645-LB GATES
013 REAR AIR FILL VALVE	033 PRIMARY AIR TANK, JOHNSON WELDING	053 PARKING BRAKE INTERLOCK, PARKER 7131	073 KNEELING MUFFLER EXHAUST
012 ENTRANCE DOOR LOCK CYLINDER Bimba, 7/8" DIA X 5" STROKE	032 OIL SEPARATOR, HALDEX CONSEP	052 PROTECTION VALVE, BENDIX PR-4, 70 PSI	072 GOVERNOR FOR AIR COMPRESSOR WABCO
011 ENTRANCE DOOR CYLINDER Bimba, 2.5" DIA X 5" STROKE	031 2-WAYS HEATER VALVE SOLENOID ASCO, SYSTEM 2014	051 AIR FILTER ASCO NUMATICS 71035	071 PURGE TANK HALDEX WITH MANUAL DRAIN VALVE
010 ENTRANCE DOOR LOCK SOLENOID VALVE NORGREN, V60	030 WET TANK, JOHNSON WELDING	050 QUICK CONNECT FITTING AIR HOSE	070 DRIVER AIR SEAT MANUAL VALVE
009 ENTRANCE DOOR BY-FOLD SOLENOID VALVE NORGREN, V60	029 REAR HEIGHT CONTROL VALVE, BARKSDALE 52341	049 DOUBLE CHECK VALVE, BENDIX DC-4	069 WHEEL CHAIR LIFT DOOR LOCK SOLENOID VALVE NORGREN, V60
008 AIR MANIFOLD BLOC, PARKER 24M	028 I VALVE FOR PARKING BRAKE, BENDIX SR-7	048 PRESSURE TRANSDUCER, VOLVO	068 WHEEL CHAIR LIFT DOOR LOCK CYLINDER Bimba, 1.75" DIA X 1" STROKE
007 REGULATOR OUTPUT RETARDER, NORGREN RO6	027 VALVE FOR SERVICE BRAKE, BENDIX R-14	047 STOP LIGHT SWITCH, BENDIX	067 FRONT BRAKES VALVES, BENDIX RELAY VALVE ATR-6
006 PRESSURE REDUCTOR VALVE AHI, BENDIX RV-3	026 DOOR VALVE AUTO-RESET	046 INVERSION VALVE, BENDIX TR-3	066 BENDIX ATC VALVE
005 TAG UNLOAD VALVE, NORGREN V60	025 PARKING BRAKE VALVE BENDIX, PP-1	045 KNEELING AIR TANK, JOHNSON WELDING	065 EMERGENCY PARKING BRAKE OVERRULE VALVE, BENDIX RD-3
004 PING TANK, JOHNSON WELDING	024 ABS VALVE MODULATOR BENDIX M40-OR WITH SILENCER	044 FRONT HEIGHT CONTROL VALVE, BARKSDALE 52341	064 QUICK COUPLING PARKER, L2C
003 ALLISON SOLENOID VALVE	023 ROTATIVE CHAIN SYSTEM DRIVE AXLE SOLENOID	043 KNEELING SUSPENSION VALVE, NORGREN NUGGET 200	063 BRAKE VALVE PEDAL BENDIX, E-10P
002 ALLISON TRANSMISSION RETARDER CYLINDER	022 SWIVEL CHAIN UNIT WITH ARM ASSEMBLY	042 KNEELING SUSPENSION VALVE, NORGREN NUGGET 200	062 STEERING WHEEL COLUMN, ZF
001 AIR COMPRESSOR WABCO 636	021 REAR SUSPENSION VALVE NORGREN, NUGGET 200	041 FRONT AIR SPRING, GOODYEAR 1R12	061 ADJUSTABLE STEERING WHEEL MANUAL VALVE, MAC 1111A-032
ITEM DESCRIPTION	ITEM DESCRIPTION	ITEM DESCRIPTION	ITEM DESCRIPTION

VEHICLE DESCRIPTION : -COACH X3 WITH FRONT BEAM AXLE SUSPENSION
 -SUSPENSION FRONT KNEELING SYSTEM
 -TRANSMISSION WORLD WITH "RETARDER"
 -ABS BRAKE SYSTEM WITH "PARKING BRAKES OVERRULE"
 -HALDEX TWIN AIR DRYER WITH HALDEX OIL SEPARATOR
 -TOWING QUICK CONNECT FRONT BUMPER
 -BY-FOLD ENTRANCE DOOR WITH INTERLOCK BRAKE SYSTEM
 -WITH WHEEL CHAIR LIFT DOOR AIR LOCK
 -AIR COMPRESSOR WABCO DIRECT DRIVE ON VOLVO ENGINE
 -UNLOAD TAG SUSPENSION SYSTEM

NOTE 1 : SoXX AND SoXX ARE ELECTRIC CONNECTORS NAME TAG.

LEGENDE:
 SER: SERVICE
 EM: EMERGENCY
 EXH: EXHAUST
 BAL: BALANCE
 PRES: PRESSURE SERVICE
 PRES: PRESSURE ALIMENTATION
 ACC: ACCESSORE (DEL)
 ALM: ALIMENTATION (DEL)
 SUP: SUPPLY (DEL)
 SUP: SUPPLY (DEL)
 SUP: SUPPLY (DEL)
 SUP: SUPPLY (DEL)
 SUP: SUPPLY (DEL)
 SUP: SUPPLY (DEL)



020 ROTATIVE CHAIN SYSTEM BLOC MANIFOLD	040 FRONT BRAKE CHAMBER, KNORR TYPE 24	060 ENTRANCE DOOR MANUAL VALVE, NORGREN D-PRO V82	080
019 LIFT TAG AXLE VALVE BENDIX, TW-1	039 ACCESSORIES AIR TANK, JOHNSON WELDING	059 PRESSURE SWITCH N.O. ALLISON	079
018 TAG AXLE BRAKE CHAMBER KNORR, TYPE 14	038 SECONDARY AIR TANK, JOHNSON WELDING	058 PRESSURE REDUCING VALVE, BENDIX RV-3	078 CHECK VALVE
017 DRIVE AXLE BRAKE CHAMBER, KNORR TYPE 24/24	037 PROTECTION VALVE, BENDIX PR-4, 85 PSI	057 PRESSURE REDUCING VALVE, BENDIX RV-3	077 SILENCER HALDEX AIR DRYER
016 DRIVE AXLE AIR SPRING GOODYEAR, TR11	036 PARKING BRAKE OVERRULE AIR TANK, JOHNSON WELDING	056 INLINE QUICK RELEASE VALVE BENDIX, QR-L	076 FLOATING TEE FITTING
015 TAG AXLE AIR SPRING GOODYEAR, TR12	035 3-WAYS HEATER VALVE SOLENOID BURKERT, SYSTEM 2006	055 SOLENOID ENTRANCE DOOR INTERLOCK PARKER 7131	075 AIR MANUAL VALVE ON-OFF
014 ELECTRIC PURGE HALDEX OIL SEPARATOR	034 HALDEX TWIN AIR DRYER	054 MANIFOLD VALVE NORGREN D0043	074 SCHRADER VALVE 645-LB GATES
013 REAR AIR FILL VALVE	033 PRIMARY AIR TANK, JOHNSON WELDING	053 PARKING BRAKE INTERLOCK, PARKER 7131	073 KNEELING MUFFLER EXHAUST
012 ENTRANCE DOOR LOCK CYLINDER Bimba, 7/8" DIA X 5" STROKE	032 OIL SEPARATOR, HALDEX CONSEP	052 PROTECTION VALVE, BENDIX PR-4, 70 PSI	072 GOVERNOR FOR AIR COMPRESSOR WABCO
011 ENTRANCE DOOR CYLINDER Bimba, 2.5" DIA X 5" STROKE	031 2-WAYS HEATER VALVE SOLENOID ASCO, SYSTEM 2014	051 AIR FILTER ASCO NUMATICS 71035	071 PURGE TANK HALDEX WITH MANUAL DRAIN VALVE
010 ENTRANCE DOOR LOCK SOLENOID VALVE NORGREN, V60	030 WET TANK, JOHNSON WELDING	050 QUICK CONNECT FITTING AIR HOSE	070 DRIVER AIR SEAT MANUAL VALVE
009 ENTRANCE DOOR BY-FOLD SOLENOID VALVE NORGREN, V60	029 REAR HEIGHT CONTROL VALVE, BARKSDALE 52341	049 DOUBLE CHECK VALVE, BENDIX DC-4	069 WHEEL CHAIR LIFT DOOR LOCK SOLENOID VALVE NORGREN, V60
008 AIR MANIFOLD BLOC, PARKER 24M	028 VALVE FOR PARKING BRAKE, BENDIX SR-7	048 PRESSURE TRANSDUCER, VOLVO	068 WHEEL CHAIR LIFT DOOR LOCK CYLINDER Bimba, 1.75" DIA X 1" STROKE
007 REGULATOR OUTPUT RETARDER, NORGREN RO6	027 VALVE FOR SERVICE BRAKE, BENDIX R-14	047 STOP LIGHT SWITCH, BENDIX	067 FRONT BRAKES VALVES, BENDIX RELAY VALVE ATR-6
006 PRESSURE REDUCTOR VALVE AHI, BENDIX RV-3	026 DOOR VALVE AUTO-RESET	046 INVERSION VALVE, BENDIX TR-3	066 BENDIX ATC VALVE
005 TAG UNLOAD VALVE, NORGREN V60	025 PARKING BRAKE VALVE BENDIX, PP-1	045 KNEELING AIR TANK, JOHNSON WELDING	065 EMERGENCY PARKING BRAKE OVERRULE VALVE, BENDIX RD-3
004 PING TANK, JOHNSON WELDING	024 ABS VALVE MODULATOR BENDIX M40-OR WITH SILENCER	044 FRONT HEIGHT CONTROL VALVE, BARKSDALE 52341	064 QUICK COUPLING PARKER, L2C
003 ALLISON SOLENOID VALVE	023 ROTATIVE CHAIN SYSTEM DRIVE AXLE SOLENOID	043 KNEELING SUSPENSION VALVE, NORGREN NUGGET 200	063 BRAKE VALVE PEDAL BENDIX, E-10P
002 ALLISON TRANSMISSION RETARDER CYLINDER	022 SWIVEL CHAIN UNIT WITH ARM ASSEMBLY	042 KNEELING SUSPENSION VALVE, NORGREN NUGGET 200	062 STEERING WHEEL COLUMN, ZF
001 AIR COMPRESSOR WABCO 636	021 REAR SUSPENSION VALVE NORGREN, NUGGET 200	041 FRONT AIR SPRING, GOODYEAR 1R12	061 ADJUSTABLE STEERING WHEEL MANUAL VALVE, MAC 1111A-032
ITEM DESCRIPTION	ITEM DESCRIPTION	ITEM DESCRIPTION	ITEM DESCRIPTION

PREVOST

PNEUMATIC SCHEMATIC X3 NYCT
ENTRANCE DOOR AND WHEEL CHAIR LIFT INTERLOCK

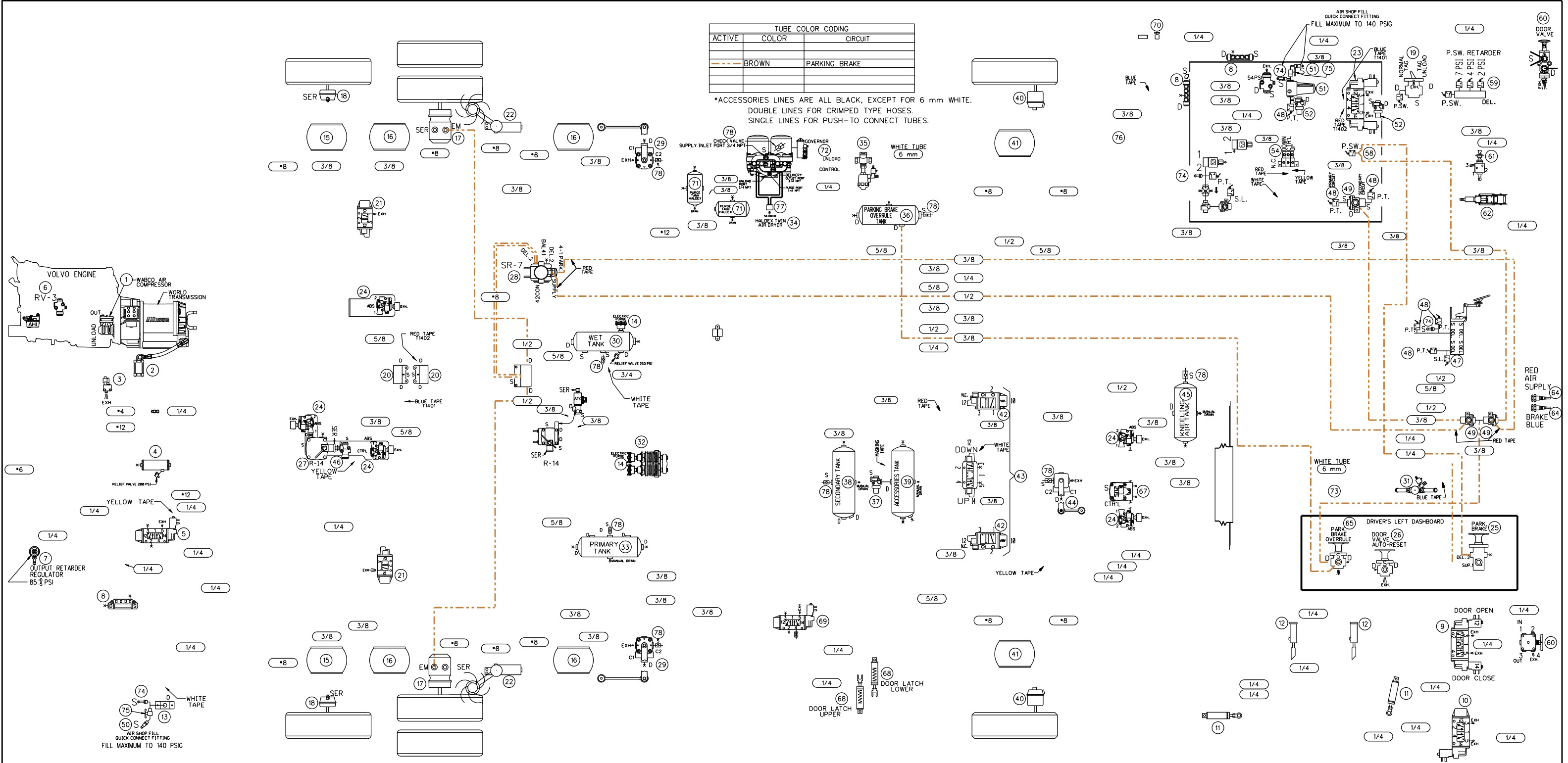
VEHICLE DESCRIPTION :
 -COACH X3 WITH FRONT BEAM AXLE SUSPENSION
 -SUSPENSION FRONT KNEELING SYSTEM
 -TRANSMISSION WORLD WITH "RETARDER"
 -ABS BRAKE SYSTEM WITH "PARKING BRAKES OVERRULE"
 -HALDEX TWIN AIR DRYER WITH HALDEX OIL SEPARATOR
 -TOWING QUICK CONNECT FRONT BUMPER
 -BY-FOLD ENTRANCE DOOR WITH INTERLOCK BRAKE SYSTEM
 -WITH WHEEL CHAIR LIFT DOOR AIR LOCK
 -AIR COMPRESSOR WABCO DIRECT DRIVE ON VOLVO ENGINE
 -UNLOAD TAG SUSPENSION SYSTEM

NOTE 1 : SoXX AND SoXX ARE ELECTRIC CONNECTORS NAME TAG.

LEGENDE:	RES-1: RESERVOIR SERVICE	ALL: SUPPLY BRID
SER-1: SERVICE	P-1: PRESSION (ALIMENTATION)	N.C.: NORMALLY CLOSE
EM-1: EMERGENCY	A-1: ACCESSORE (DEL)	P.T.: PRESSURE TANK
EXH-1: EXHAUST	TR-1: TRIP (RELEVANCE DU DEL)	A: AIR
BAL-1: BALANCE	S-1: ALIMENTATION (SUPPLY)	DR: DRAIN
		SO: SOLENOIDE
		SP: SPRING

REV.: A
DATE: 2020/09/28

PAGE:
D140445 P4



020 ROTATIVE CHAIN SYSTEM BLOC MANIFOLD	040 FRONT BRAKE CHAMBER, KNORR TYPE 24	060 ENTRANCE DOOR MANUAL VALVE, NORGREN D-PRO V82	080
019 LIFT TAG AXLE VALVE BENDIX, TW-1	039 ACCESSORIES AIR TANK, JOHNSON WELDING	059 PRESSURE SWITCH N.O. ALLISON	079
018 TAG AXLE BRAKE CHAMBER, KNORR, TYPE 14	038 SECONDARY AIR TANK, JOHNSON WELDING	058 PRESSURE SWITCH N.C. KLIXON	078 CHECK VALVE
017 DRIVE AXLE BRAKE CHAMBER, KNORR TYPE 24/24	037 PROTECTION VALVE, BENDIX PR-4, 85 PSI	057 PRESSURE REDUCING VALVE, BENDIX RV-3	077 SILENCER HALDEX AIR DRYER
016 DRIVE AXLE AIR SPRING GOODYEAR, TR11	036 PARKING BRAKE OVERRULE AIR TANK, JOHNSON WELDING	056 INLINE QUICK RELEASE VALVE BENDIX, QR-L	076 FLOATING TEE FITTING
015 TAG AXLE AIR SPRING GOODYEAR, TR12	035 3-WAYS HEATER VALVE SOLENOID BURKERT, SYSTEM 2006	055 SOLENOID ENTRANCE DOOR INTERLOCK PARKER 7131	075 AIR MANUAL VALVE ON-OFF
014 ELECTRIC PURGE HALDEX OIL SEPARATOR	034 HALDEX TWIN AIR DRYER	054 MANIFOLD VALVE NORGREN D0043	074 SCHRADER VALVE 645-LB GATES
013 REAR AIR FILL VALVE	033 PRIMARY AIR TANK, JOHNSON WELDING	053 PARKING BRAKE INTERLOCK, PARKER 7131	073 KNEELING MUFFLER EXHAUST
012 ENTRANCE DOOR LOCK CYLINDER Bimba, 7/8" DIA X 5" STROKE	032 OIL SEPARATOR, HALDEX CONSEP	052 PROTECTION VALVE, BENDIX PR-4, 70 PSI	072 GOVERNOR FOR AIR COMPRESSOR WABCO
011 ENTRANCE DOOR CYLINDER Bimba, 2.5" DIA X 5" STROKE	031 2-WAYS HEATER VALVE SOLENOID ASCO, SYSTEM 2014	051 AIR FILTER ASCO NUMATICS 71035	071 PURGE TANK HALDEX WITH MANUAL DRAIN VALVE
010 ENTRANCE DOOR LOCK SOLENOID VALVE NORGREN, V60	030 WET TANK, JOHNSON WELDING	050 QUICK CONNECT FITTING AIR HOSE	070 DRIVER AIR SEAT MANUAL VALVE
009 ENTRANCE DOOR BY-FOLD SOLENOID VALVE NORGREN, V60	029 REAR HEIGHT CONTROL VALVE, BARKSDALE 52341	049 DOUBLE CHECK VALVE, BENDIX DC-4	069 WHEEL CHAIR LIFT DOOR LOCK SOLENOID VALVE NORGREN, V60
008 AIR MANIFOLD BLOC, PARKER 24M	028 I VALVE FOR PARKING BRAKE, BENDIX SR-7	048 PRESSURE TRANSDUCER, VOLVO	068 WHEEL CHAIR LIFT DOOR LOCK CYLINDER Bimba, 1.75" DIA X 1" STROKE
007 REGULATOR OUTPUT RETARDER, NORGREN RO6	027 VALVE FOR SERVICE BRAKE, BENDIX R-14	047 STOP LIGHT SWITCH, BENDIX	067 FRONT BRAKES VALVES, BENDIX RELAY VALVE ATR-6
006 PRESSURE REDUCTOR VALVE AHI, BENDIX RV-3	026 DOOR VALVE AUTO-RESET	046 INVERSION VALVE, BENDIX TR-3	066 BENDIX ATC VALVE
005 TAG UNLOAD VALVE, NORGREN V60	025 PARKING BRAKE VALVE BENDIX, PP-1	045 KNEELING AIR TANK, JOHNSON WELDING	065 EMERGENCY PARKING BRAKE OVERRULE VALVE, BENDIX RD-3
004 PING TANK, JOHNSON WELDING	024 ABS VALVE MODULATOR BENDIX M40-OR WITH SILENCER	044 FRONT HEIGHT CONTROL VALVE, BARKSDALE 52341	064 QUICK COUPLING PARKER, L2C
003 ALLISON SOLENOID VALVE	023 ROTATIVE CHAIN SYSTEM DRIVE AXLE SOLENOID	043 KNEELING SUSPENSION VALVE, NORGREN NUGGET 200	063 BRAKE VALVE PEDAL BENDIX, E-10P
002 ALLISON TRANSMISSION RETARDER CYLINDER	022 SWIVEL CHAIN UNIT WITH ARM ASSEMBLY	042 KNEELING SUSPENSION VALVE, NORGREN NUGGET 200	062 STEERING WHEEL COLUMN, ZF
001 AIR COMPRESSOR WABCO 636	021 REAR SUSPENSION VALVE NORGREN, NUGGET 200	041 FRONT AIR SPRING, GOODYEAR 1R12	061 ADJUSTABLE STEERING WHEEL MANUAL VALVE, MAC 1111A-032
ITEM DESCRIPTION	ITEM DESCRIPTION	ITEM DESCRIPTION	ITEM DESCRIPTION

NOTE 1 : SoXX AND SoXX ARE ELECTRIC CONNECTORS NAME TAG.

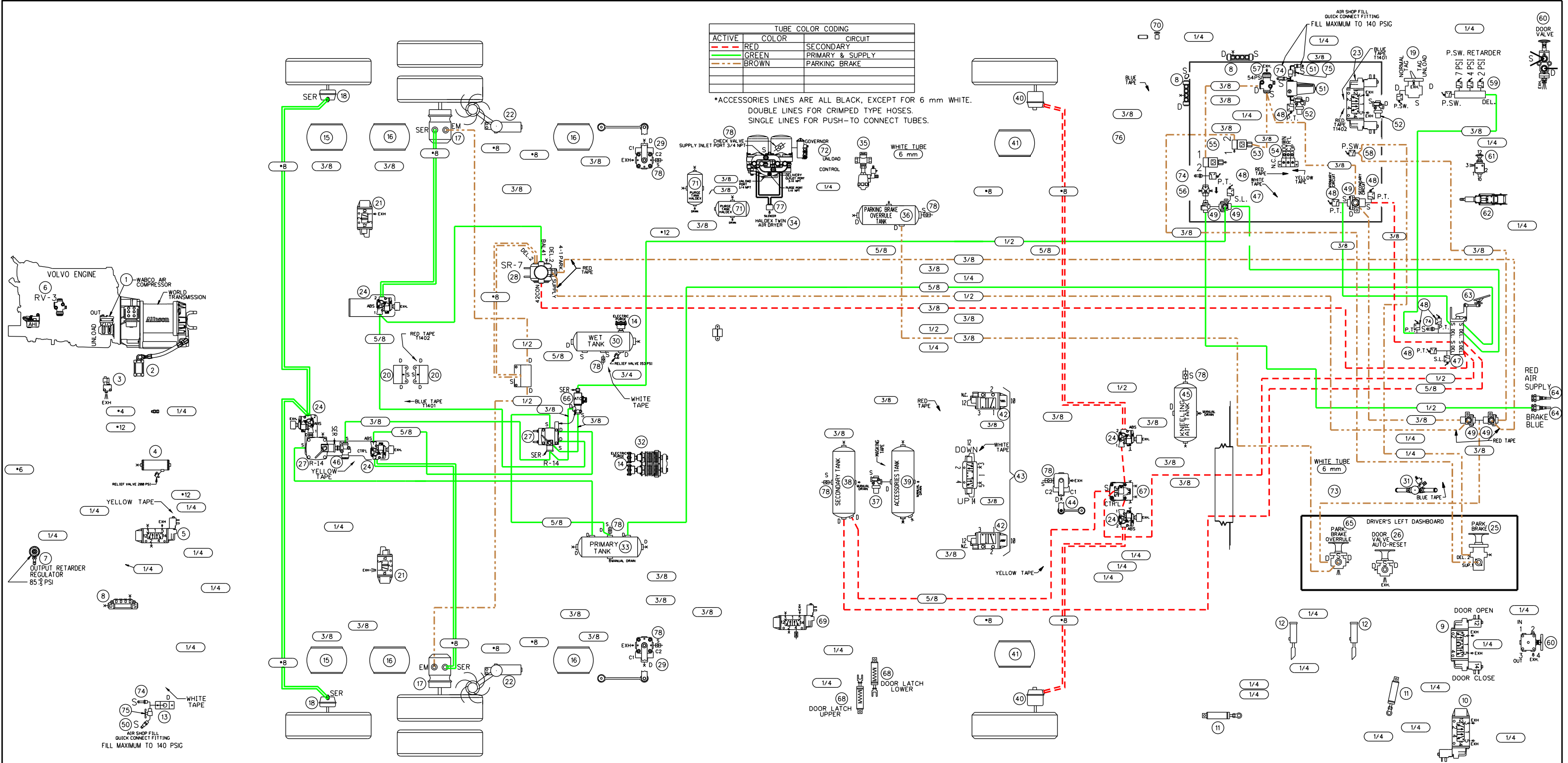
LEGENDE:			
-SER-	SERVICE	-RES-	RESPIRATOR SERVICE
-EM-	EMERGENCY	-P-	PRESSURE (ALIMENTATION)
-EXH-	EXHAUST	-A-	ACCESSOIRE (DEL)
-BAL-	BALANCE	-S-	ALIMENTATION (SUPPLY)
-S.L.	STOP LIGHT SWITCH	-P.T.	PRESSURE TANK
-M.C.	MANUAL CONTROL	-D.	DRAIN
-P.S.	PRESSURE SWITCH	-S.	SOLENOID
-A.	ACCESSOIRE	-S.P.	SPRING

PREVOST

PNEUMATIC SCHEMATIC X3 NYCT
EMERGENCY AND PARKING BRAKE

REV.: A
DATE: 2020/09/28

PAGE:
D140445 P5



020 ROTATIVE CHAIN SYSTEM BLOC MANIFOLD	040 FRONT BRAKE CHAMBER, KNORR TYPE 24	060 ENTRANCE DOOR MANUAL VALVE, NORGREN D-PRO V82	080
019 LIFT TAG AXLE VALVE BENDIX, TW-1	039 ACCESSORIES AIR TANK, JOHNSON WELDING	059 PRESSURE SWITCH N.O. ALLISON	079
018 TAG AXLE BRAKE CHAMBER KNORR, TYPE 14	038 SECONDARY AIR TANK, JOHNSON WELDING	058 PRESSURE SWITCH N.C. KLIXON	078 CHECK VALVE
017 DRIVE AXLE BRAKE CHAMBER, KNORR TYPE 24/24	037 PROTECTION VALVE, BENDIX PR-4, 85 PSI	057 PRESSURE REDUCING VALVE, BENDIX RV-3	077 SILENCER HALDEX AIR DRYER
016 DRIVE AXLE AIR SPRING GOODYEAR, TR11	036 PARKING BRAKE OVERRULE AIR TANK, JOHNSON WELDING	056 INLINE QUICK RELEASE VALVE BENDIX, QR-L	076 FLOATING TEE FITTING
015 TAG AXLE AIR SPRING GOODYEAR, TR12	035 3-WAYS HEATER VALVE SOLENOID BURKERT, SYSTEM 2006	055 SOLENOID ENTRANCE DOOR INTERLOCK PARKER 7131	075 AIR MANUAL VALVE ON-OFF
014 ELECTRIC PURGE HALDEX OIL SEPARATOR	034 HALDEX TWIN AIR DRYER	054 MANIFOLD VALVE NORGREN D0043	074 SCHRADER VALVE 645-LB GATES
013 REAR AIR FILL VALVE	033 PRIMARY AIR TANK, JOHNSON WELDING	053 PARKING BRAKE INTERLOCK, PARKER 7131	073 KNEELING MUFFLER EXHAUST
012 ENTRANCE DOOR LOCK CYLINDER Bimba, 7/8" DIA X 5" STROKE	032 OIL SEPARATOR, HALDEX CONSEP	052 PROTECTION VALVE, BENDIX PR-4, 70 PSI	072 GOVERNOR FOR AIR COMPRESSOR WABCO
011 ENTRANCE DOOR CYLINDER Bimba, 2.5" DIA X 5" STROKE	031 2-WAYS HEATER VALVE SOLENOID ASCO, SYSTEM 2014	051 AIR FILTER ASCO NUMATICS 71035	071 PURGE TANK HALDEX WITH MANUAL DRAIN VALVE
010 ENTRANCE DOOR LOCK SOLENOID VALVE NORGREN, V60	030 WET TANK, JOHNSON WELDING	050 QUICK CONNECT FITTING AIR HOSE	070 DRIVER AIR SEAT MANUAL VALVE
009 ENTRANCE DOOR BY-FOLD SOLENOID VALVE NORGREN, V60	029 REAR HEIGHT CONTROL VALVE, BARKSDALE 52341	049 DOUBLE CHECK VALVE, BENDIX DC-4	069 WHEEL CHAIR LIFT DOOR LOCK SOLENOID VALVE NORGREN, V60
008 AIR MANIFOLD BLOC, PARKER 24M	028 I VALVE FOR PARKING BRAKE, BENDIX SR-7	048 PRESSURE TRANSDUCER, VOLVO	068 WHEEL CHAIR LIFT DOOR LOCK CYLINDER Bimba, 1.75" DIA X 1" STROKE
007 REGULATOR OUTPUT RETARDER, NORGREN RO6	027 VALVE FOR SERVICE BRAKE, BENDIX R-14	047 STOP LIGHT SWITCH, BENDIX	067 FRONT BRAKES VALVES, BENDIX RELAY VALVE ATR-6
006 PRESSURE REDUCTOR VALVE AHI, BENDIX RV-3	026 DOOR VALVE AUTO-RESET	046 INVERSION VALVE, BENDIX TR-3	066 BENDIX ATC VALVE
005 TAG UNLOAD VALVE, NORGREN V60	025 PARKING BRAKE VALVE BENDIX, PP-1	045 KNEELING AIR TANK, JOHNSON WELDING	065 EMERGENCY PARKING BRAKE OVERRULE VALVE, BENDIX RD-3
004 PING TANK, JOHNSON WELDING	024 ABS VALVE MODULATOR BENDIX M40-OR WITH SILENCER	044 FRONT HEIGHT CONTROL VALVE, BARKSDALE 52341	064 QUICK COUPLING PARKER, L2C
003 ALLISON SOLENOID VALVE	023 ROTATIVE CHAIN SYSTEM DRIVE AXLE SOLENOID	043 KNEELING SUSPENSION VALVE, NORGREN NUGGET 200	063 BRAKE VALVE PEDAL BENDIX, E-10P
002 ALLISON TRANSMISSION RETARDER CYLINDER	022 SWIVEL CHAIN UNIT WITH ARM ASSEMBLY	042 KNEELING SUSPENSION VALVE, NORGREN NUGGET 200	062 STEERING WHEEL COLUMN, ZF
001 AIR COMPRESSOR WABCO 636	021 REAR SUSPENSION VALVE NORGREN, NUGGET 200	041 FRONT AIR SPRING, GOODYEAR 1R12	061 ADJUSTABLE STEERING WHEEL MANUAL VALVE, MAC 1111A-032
ITEM DESCRIPTION	ITEM DESCRIPTION	ITEM DESCRIPTION	ITEM DESCRIPTION

LEGENDE:

"SER": SERVICE	"RES": RESERVOIR SERVICE	"S.L.": STOP LIGHT SWITCH
"EM": EMERGENCY	"P": PRESSION (ALIMENTATION)	"R.C.": RALLY CLUSE
"EXH": EXHAUST	"A": ACCESSORE (OEL)	"P.T.": PRESSURE TANK
"BAL": BALANCE	"D": DELIVERY (OU DELI.)	"P.S.": PRESSURE SWITCH
	"S": ALIMENTATION (SUPPLY)	"A": AIR
		"D": DRAIN
		"S": SOLENOIDE
		"SP": SPRING

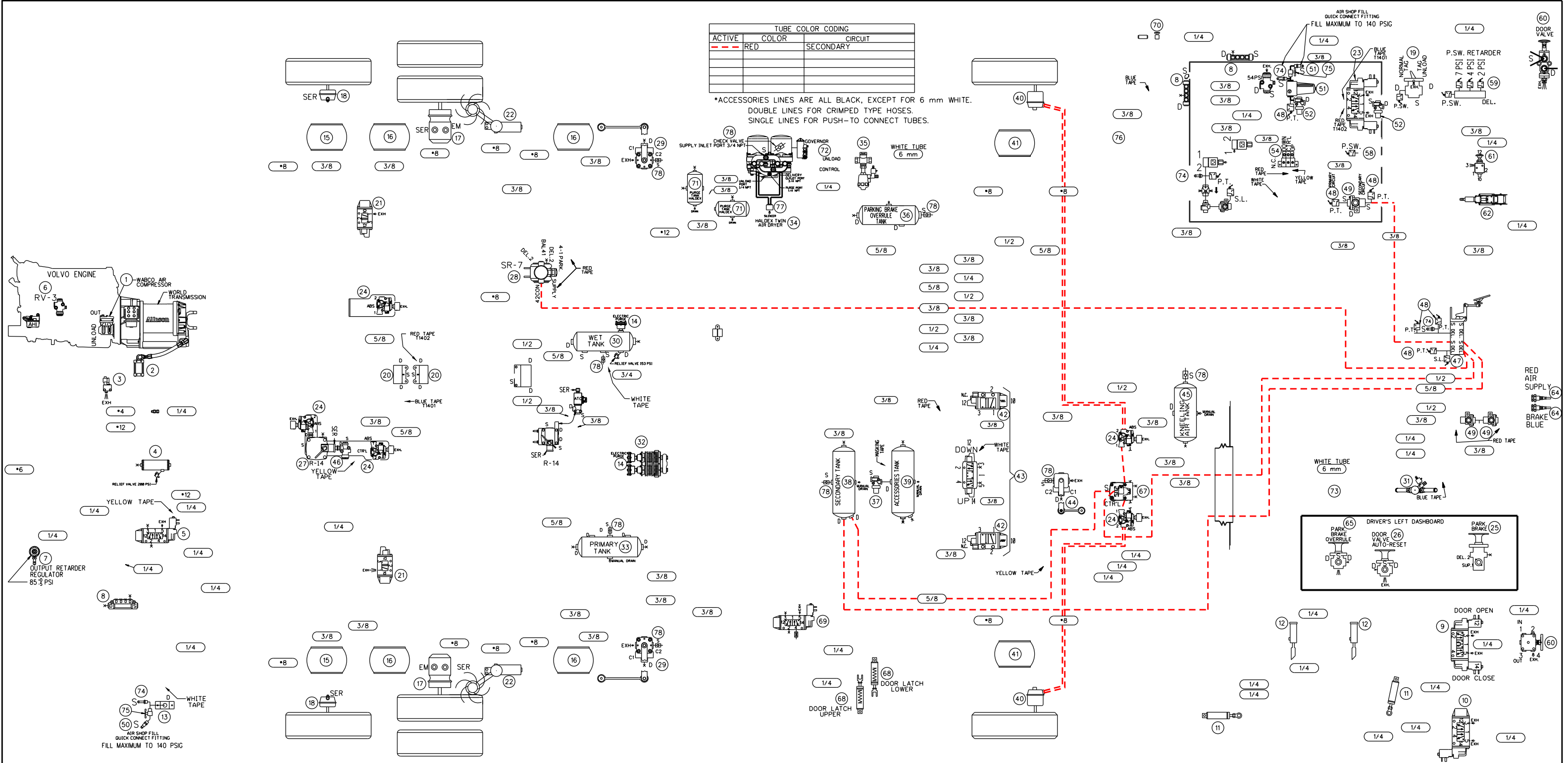
NOTE 1 : SoXX AND SoXX ARE ELECTRIC CONNECTORS NAME TAG.

PREVOST

PNEUMATIC SCHEMATIC X3 NYCT
COMPLETE AIR BRAKE SYSTEM

REV.: A
DATE: 2020/09/28

PAGE: D140445 P6

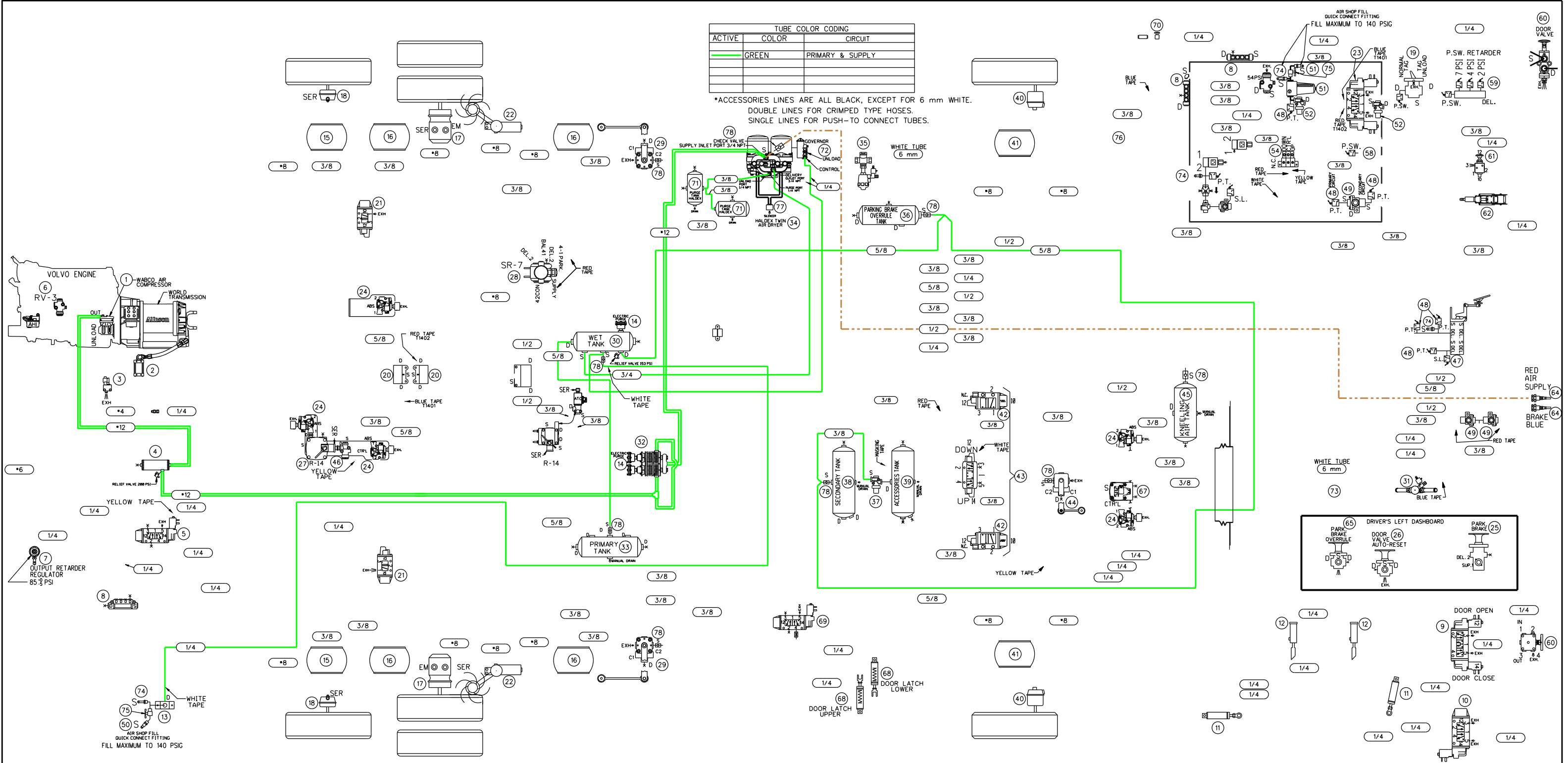


020	ROTATIVE CHAIN SYSTEM BLOC MANIFOLD	040	FRONT BRAKE CHAMBER, KNORR TYPE 24	060	ENTRANCE DOOR MANUAL VALVE, NORGREN D-PRO V82	080	
019	LIFT TAG AXLE VALVE BENDIX, TW-1	039	ACCESSORIES AIR TANK, JOHNSON WELDING	059	PRESSURE SWITCH N.O. ALLISON	079	
018	TAG AXLE BRAKE CHAMBER KNORR, TYPE 14	038	SECONDARY AIR TANK, JOHNSON WELDING	058	PRESSURE SWITCH N.C. KLIXON	078	CHECK VALVE
017	DRIVE AXLE BRAKE CHAMBER, KNORR TYPE 24/24	037	PROTECTION VALVE, BENDIX PR-4, 85 PSI	057	PRESSURE REDUCING VALVE, BENDIX RV-3	077	SILENCER HALDEX AIR DRYER
016	DRIVE AXLE AIR SPRING GOODYEAR, TR11	036	PARKING BRAKE OVERRULE AIR TANK, JOHNSON WELDING	056	INLINE QUICK RELEASE VALVE BENDIX, QR-L	076	FLOATING TEE FITTING
015	TAG AXLE AIR SPRING GOODYEAR, TR12	035	3-WAYS HEATER VALVE SOLENOID BURKERT, SYSTEM 2006	055	SOLENOID ENTRANCE DOOR INTERLOCK PARKER 7131	075	AIR MANUAL VALVE ON-OFF
014	ELECTRIC PURGE HALDEX OIL SEPARATOR	034	HALDEX TWIN AIR DRYER	054	MANIFOLD VALVE NORGREN D004.3	074	SCHRADER VALVE 645-LB GATES
013	REAR AIR FILL VALVE	033	PRIMARY AIR TANK, JOHNSON WELDING	053	PARKING BRAKE INTERLOCK, PARKER 7131	073	KNEELING MUFFLER EXHAUST
012	ENTRANCE DOOR LOCK CYLINDER Bimba, 7/8" DIA X 5" STROKE	032	OIL SEPARATOR, HALDEX CONSEP	052	PROTECTION VALVE, BENDIX PR-4, 70 PSI	072	GOVERNOR FOR AIR COMPRESSOR WABCO
011	ENTRANCE DOOR CYLINDER Bimba, 2.5" DIA X 5" STROKE	031	2-WAYS HEATER VALVE SOLENOID ASCO, SYSTEM 2014	051	AIR FILTER ASCO NUMATICS 71035	071	PURGE TANK HALDEX WITH MANUAL DRAIN VALVE
010	ENTRANCE DOOR LOCK SOLENOID VALVE NORGREN, V60	030	WET TANK, JOHNSON WELDING	050	QUICK CONNECT FITTING AIR HOSE	070	DRIVER AIR SEAT MANUAL VALVE
009	ENTRANCE DOOR BY-FOLD SOLENOID VALVE NORGREN, V60	029	REAR HEIGHT CONTROL VALVE, BARKSDALE 52341	049	DOUBLE CHECK VALVE, BENDIX DC-4	069	WHEEL CHAIR LIFT DOOR LOCK SOLENOID VALVE NORGREN, V60
008	AIR MANIFOLD BLOC, PARKER 24M	028	I VALVE FOR PARKING BRAKE, BENDIX SR-7	048	PRESSURE TRANSDUCER, VOLVO	068	WHEEL CHAIR LIFT DOOR LOCK CYLINDER Bimba, 1.75" DIA X 1" STROKE
007	REGULATOR OUTPUT RETARDER, NORGREN RO6	027	VALVE FOR SERVICE BRAKE, BENDIX R-14	047	STOP LIGHT SWITCH, BENDIX	067	FRONT BRAKES VALVES, BENDIX RELAY VALVE ATR-6
006	PRESSURE REDUCTOR VALVE AHI, BENDIX RV-3	026	DOOR VALVE AUTO-RESET	046	INVERSION VALVE, BENDIX TR-3	066	BENDIX ATC VALVE
005	TAG UNLOAD VALVE, NORGREN V60	025	PARKING BRAKE VALVE BENDIX, PP-1	045	KNEELING AIR TANK, JOHNSON WELDING	065	EMERGENCY PARKING BRAKE OVERRULE VALVE, BENDIX RD-3
004	PING TANK, JOHNSON WELDING	024	ABS VALVE MODULATOR BENDIX M40-OR WITH SILENCER	044	FRONT HEIGHT CONTROL VALVE, BARKSDALE 52341	064	QUICK COUPLING PARKER, L2C
003	ALLISON SOLENOID VALVE	023	ROTATIVE CHAIN SYSTEM DRIVE AXLE SOLENOID	043	KNEELING SUSPENSION VALVE, NORGREN NUGGET 200	063	BRAKE VALVE PEDAL BENDIX, E-10P
002	ALLISON TRANSMISSION RETARDER CYLINDER	022	SWIVEL CHAIN UNIT WITH ARM ASSEMBLY	042	KNEELING SUSPENSION VALVE, NORGREN NUGGET 200	062	STEERING WHEEL COLUMN, ZF
001	AIR COMPRESSOR WABCO 636	021	REAR SUSPENSION VALVE NORGREN, NUGGET 200	041	FRONT AIR SPRING, GOODYEAR 1R12	061	ADJUSTABLE STEERING WHEEL MANUAL VALVE, MAC 1111A-032
ITEM	DESCRIPTION	ITEM	DESCRIPTION	ITEM	DESCRIPTION	ITEM	DESCRIPTION

VEHICLE DESCRIPTION : --COACH X3 WITH FRONT BEAM AXLE SUSPENSION
 --SUSPENSION FRONT KNEELING SYSTEM
 --TRANSMISSION WORLD WITH "RETARDER"
 --ABS BRAKE SYSTEM WITH "PARKING BRAKES OVERRULE"
 --HALDEX TWIN AIR DRYER WITH HALDEX OIL SEPARATOR
 --TOWING QUICK CONNECT FRONT BUMPER
 --BY-FOLD ENTRANCE DOOR WITH INTERLOCK BRAKE SYSTEM
 --WITH WHEEL CHAIR LIFT DOOR AIR LOCK
 --AIR COMPRESSOR WABCO DIRECT DRIVE ON VOLVO ENGINE
 --UNLOAD TAG SUSPENSION SYSTEM

NOTE 1 : SoXX AND SoXX ARE ELECTRIC CONNECTORS NAME TAG.

LEGENDE:
 SER: SERVICE
 EM: EMERGENCY
 EXH: EXHAUST
 BAL: BALANCE
 RES: RESERVOIR SERVICE
 PR: PRESSURE ALIMENTATION
 AT: ACCESSORE (DEL)
 ALM: ALIMENTATION (SUPPLY)
 SLL: SUPPLY LINE
 N.C.: NORMALLY CLOSE
 N.O.: NORMALLY OPEN
 P.S.: PRESSURE SWITCH
 A: AIR
 D: DRAIN
 S: SOLENOID
 SPR: SPRING



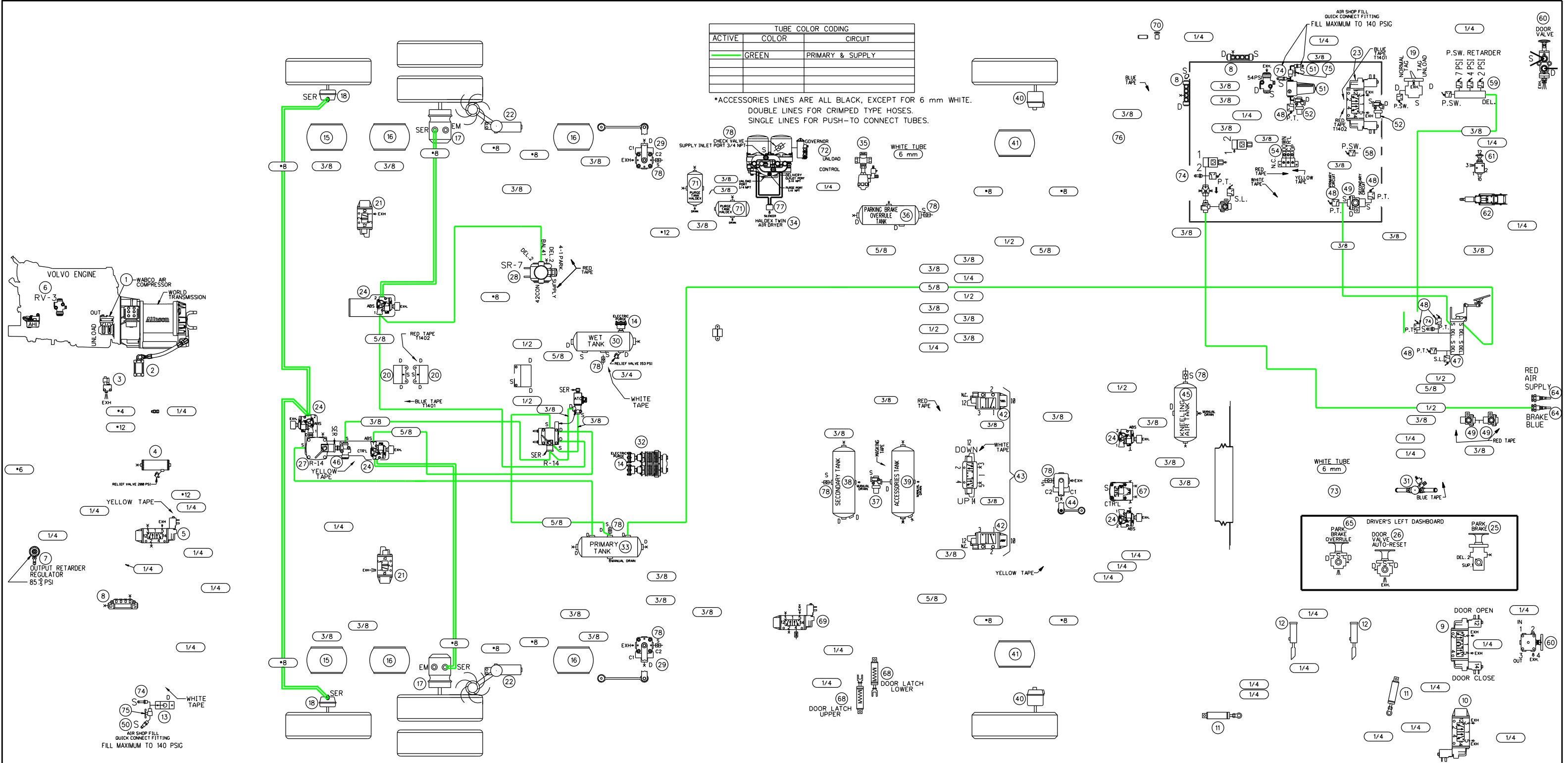
020 ROTATIVE CHAIN SYSTEM BLOC MANIFOLD	040 FRONT BRAKE CHAMBER, KNORR TYPE 24	060 ENTRANCE DOOR MANUAL VALVE, NORGREN D-PRO V82	080
019 LIFT TAG AXLE VALVE BENDIX, TW-1	039 ACCESSORIES AIR TANK, JOHNSON WELDING	059 PRESSURE SWITCH N.O. ALLISON	079
018 TAG AXLE BRAKE CHAMBER KNORR, TYPE 14	038 SECONDARY AIR TANK, JOHNSON WELDING	058 PRESSURE SWITCH N.C. KLIXON	078 CHECK VALVE
017 DRIVE AXLE BRAKE CHAMBER, KNORR TYPE 24/24	037 PROTECTION VALVE, BENDIX PR-4, 85 PSI	057 PRESSURE REDUCING VALVE, BENDIX RV-3	077 SILENCER HALDEX AIR DRYER
016 DRIVE AXLE AIR SPRING GOODYEAR, TR11	036 PARKING BRAKE OVERRULE AIR TANK, JOHNSON WELDING	056 INLINE QUICK RELEASE VALVE BENDIX, QR-L	076 FLOATING TEE FITTING
015 TAG AXLE AIR SPRING GOODYEAR, TR12	035 3-WAYS HEATER VALVE SOLENOID BURKERT, SYSTEM 2006	055 SOLENOID ENTRANCE DOOR INTERLOCK PARKER 7131	075 AIR MANUAL VALVE ON-OFF
014 ELECTRIC PURGE HALDEX OIL SEPARATOR	034 HALDEX TWIN AIR DRYER	054 MANIFOLD VALVE NORGREN D0043	074 SCHRADER VALVE 645-LB GATES
013 REAR AIR FILL VALVE	033 PRIMARY AIR TANK, JOHNSON WELDING	053 PARKING BRAKE INTERLOCK, PARKER 7131	073 KNEELING MUFFLER EXHAUST
012 ENTRANCE DOOR LOCK CYLINDER Bimba, 7/8" DIA X 5" STROKE	032 OIL SEPARATOR, HALDEX CONSEP	052 PROTECTION VALVE, BENDIX PR-4, 70 PSI	072 GOVERNOR FOR AIR COMPRESSOR WABCO
011 ENTRANCE DOOR CYLINDER Bimba, 2.5" DIA X 5" STROKE	031 2-WAYS HEATER VALVE SOLENOID ASCO, SYSTEM 2014	051 AIR FILTER ASCO NUMATICS 71035	071 PURGE TANK HALDEX WITH MANUAL DRAIN VALVE
010 ENTRANCE DOOR LOCK SOLENOID VALVE NORGREN, V60	030 WET TANK, JOHNSON WELDING	050 QUICK CONNECT FITTING AIR HOSE	070 DRIVER AIR SEAT MANUAL VALVE
009 ENTRANCE DOOR BY-FOLD SOLENOID VALVE NORGREN, V60	029 REAR HEIGHT CONTROL VALVE, BARKSDALE 52341	049 DOUBLE CHECK VALVE, BENDIX DC-4	069 WHEEL CHAIR LIFT DOOR LOCK SOLENOID VALVE NORGREN, V60
008 AIR MANIFOLD BLOC, PARKER 24M	028 VALVE FOR PARKING BRAKE, BENDIX SR-7	048 PRESSURE TRANSDUCER, VOLVO	068 WHEEL CHAIR LIFT DOOR LOCK CYLINDER Bimba, 1.75" DIA X 1" STROKE
007 REGULATOR OUTPUT RETARDER, NORGREN RO6	027 VALVE FOR SERVICE BRAKE, BENDIX R-14	047 STOP LIGHT SWITCH, BENDIX	067 FRONT BRAKES VALVES, BENDIX RELAY VALVE ATR-6
006 PRESSURE REDUCTOR VALVE AHI, BENDIX RV-3	026 DOOR VALVE AUTO-RESET	046 INVERSION VALVE, BENDIX TR-3	066 BENDIX ATC VALVE
005 TAG UNLOAD VALVE, NORGREN V60	025 PARKING BRAKE VALVE BENDIX, PP-1	045 KNEELING AIR TANK, JOHNSON WELDING	065 EMERGENCY PARKING BRAKE OVERRULE VALVE, BENDIX RD-3
004 PING TANK, JOHNSON WELDING	024 ABS VALVE MODULATOR BENDIX M40-OR WITH SILENCER	044 FRONT HEIGHT CONTROL VALVE, BARKSDALE 52341	064 QUICK COUPLING PARKER, L2C
003 ALLISON SOLENOID VALVE	023 ROTATIVE CHAIN SYSTEM DRIVE AXLE SOLENOID	043 KNEELING SUSPENSION VALVE, NORGREN NUGGET 200	063 BRAKE VALVE PEDAL BENDIX, E-10P
002 ALLISON TRANSMISSION RETARDER CYLINDER	022 SWIVEL CHAIN UNIT WITH ARM ASSEMBLY	042 KNEELING SUSPENSION VALVE, NORGREN NUGGET 200	062 STEERING WHEEL COLUMN, ZF
001 AIR COMPRESSOR WABCO 636	021 REAR SUSPENSION VALVE NORGREN, NUGGET 200	041 FRONT AIR SPRING, GOODYEAR 1R12	061 ADJUSTABLE STEERING WHEEL MANUAL VALVE, MAC 1111A-032
ITEM DESCRIPTION	ITEM DESCRIPTION	ITEM DESCRIPTION	ITEM DESCRIPTION

PREVOST

PNEUMATIC SCHEMATIC COACH X3 NYCTA
MAIN AIR SUPPLY

REV.: A
DATE: 2020/09/28

PAGE:
D140445 P8



TUBE COLOR CODING		
ACTIVE	COLOR	CIRCUIT
	GREEN	PRIMARY & SUPPLY

*ACCESSORIES LINES ARE ALL BLACK, EXCEPT FOR 6 mm WHITE.
 DOUBLE LINES FOR CRIMPED TYPE HOSES.
 SINGLE LINES FOR PUSH-TO CONNECT TUBES.

020 ROTATIVE CHAIN SYSTEM BLOC MANIFOLD	040 FRONT BRAKE CHAMBER, KNORR TYPE 24	060 ENTRANCE DOOR MANUAL VALVE, NORGREN D-PRO V82	080
019 LIFT TAG AXLE VALVE BENDIX, TW-1	039 ACCESSORIES AIR TANK, JOHNSON WELDING	059 PRESSURE SWITCH N.O. ALLISON	079
018 TAG AXLE BRAKE CHAMBER KNORR, TYPE 14	038 SECONDARY AIR TANK, JOHNSON WELDING	058 PRESSURE SWITCH N.C. KLIXON	078 CHECK VALVE
017 DRIVE AXLE BRAKE CHAMBER, KNORR TYPE 24/24	037 PROTECTION VALVE, BENDIX PR-4, 85 PSI	057 PRESSURE REDUCING VALVE, BENDIX RV-3	077 SILENCER HALDEX AIR DRYER
016 DRIVE AXLE AIR SPRING GOODYEAR, TR11	036 PARKING BRAKE OVERRULE AIR TANK, JOHNSON WELDING	056 INLINE QUICK RELEASE VALVE BENDIX, QR-L	076 FLOATING TEE FITTING
015 TAG AXLE AIR SPRING GOODYEAR, TR12	035 3-WAYS HEATER VALVE SOLENOID BURKERT, SYSTEM 2006	055 SOLENOID ENTRANCE DOOR INTERLOCK PARKER 7131	075 AIR MANUAL VALVE ON-OFF
014 ELECTRIC PURGE HALDEX OIL SEPARATOR	034 HALDEX TWIN AIR DRYER	054 MANIFOLD VALVE NORGREN D0043	074 SCHRADER VALVE 645-LB GATES
013 REAR AIR FILL VALVE	033 PRIMARY AIR TANK, JOHNSON WELDING	053 PARKING BRAKE INTERLOCK, PARKER 7131	073 KNEELING MUFFLER EXHAUST
012 ENTRANCE DOOR LOCK CYLINDER Bimba, 7/8" DIA X 5" STROKE	032 OIL SEPARATOR, HALDEX CONSEP	052 PROTECTION VALVE, BENDIX PR-4, 70 PSI	072 GOVERNOR FOR AIR COMPRESSOR WABCO
011 ENTRANCE DOOR CYLINDER Bimba, 2.5" DIA X 5" STROKE	031 2-WAYS HEATER VALVE SOLENOID ASCO, SYSTEM 2014	051 AIR FILTER ASCO NUMATICS 71035	071 PURGE TANK HALDEX WITH MANUAL DRAIN VALVE
010 ENTRANCE DOOR LOCK SOLENOID VALVE NORGREN, V60	030 WET TANK, JOHNSON WELDING	050 QUICK CONNECT FITTING AIR HOSE	070 DRIVER AIR SEAT MANUAL VALVE
009 ENTRANCE DOOR BY-FOLD SOLENOID VALVE NORGREN, V60	029 REAR HEIGHT CONTROL VALVE, BARKSDALE 52341	049 DOUBLE CHECK VALVE, BENDIX DC-4	069 WHEEL CHAIR LIFT DOOR LOCK SOLENOID VALVE NORGREN, V60
008 AIR MANIFOLD BLOC, PARKER 24M	028 I VALVE FOR PARKING BRAKE, BENDIX SR-7	048 PRESSURE TRANSDUCER, VOLVO	068 WHEEL CHAIR LIFT DOOR LOCK CYLINDER Bimba, 1.75" DIA X 1" STROKE
007 REGULATOR OUTPUT RETARDER, NORGREN RO6	027 VALVE FOR SERVICE BRAKE, BENDIX R-14	047 STOP LIGHT SWITCH, BENDIX	067 FRONT BRAKES VALVES, BENDIX RELAY VALVE ATR-6
006 PRESSURE REDUCTOR VALVE AHI, BENDIX RV-3	026 DOOR VALVE AUTO-RESET	046 INVERSION VALVE, BENDIX TR-3	066 BENDIX ATC VALVE
005 TAG UNLOAD VALVE, NORGREN V60	025 PARKING BRAKE VALVE BENDIX, PP-1	045 KNEELING AIR TANK, JOHNSON WELDING	065 EMERGENCY PARKING BRAKE OVERRULE VALVE, BENDIX RD-3
004 PING TANK, JOHNSON WELDING	024 ABS VALVE MODULATOR BENDIX M40-OR WITH SILENCER	044 FRONT HEIGHT CONTROL VALVE, BARKSDALE 52341	064 QUICK COUPLING PARKER, L2C
003 ALLISON SOLENOID VALVE	023 ROTATIVE CHAIN SYSTEM DRIVE AXLE SOLENOID	043 KNEELING SUSPENSION VALVE, NORGREN NUGGET 200	063 BRAKE VALVE PEDAL BENDIX, E-10P
002 ALLISON TRANSMISSION RETARDER CYLINDER	022 SWIVEL CHAIN UNIT WITH ARM ASSEMBLY	042 KNEELING SUSPENSION VALVE, NORGREN NUGGET 200	062 STEERING WHEEL COLUMN, ZF
001 AIR COMPRESSOR WABCO 636	021 REAR SUSPENSION VALVE NORGREN, NUGGET 200	041 FRONT AIR SPRING, GOODYEAR 1R12	061 ADJUSTABLE STEERING WHEEL MANUAL VALVE, MAC 1111A-032
ITEM DESCRIPTION	ITEM DESCRIPTION	ITEM DESCRIPTION	ITEM DESCRIPTION

VEHICLE DESCRIPTION : -COACH X3 WITH FRONT BEAM AXLE SUSPENSION
 -SUSPENSION FRONT KNEELING SYSTEM
 -TRANSMISSION WORLD WITH "RETARDER"
 -ABS BRAKE SYSTEM WITH "PARKING BRAKES OVERRULE"
 -HALDEX TWIN AIR DRYER WITH HALDEX OIL SEPARATOR
 -TOWING QUICK CONNECT FRONT BUMPER
 -BY-FOLD ENTRANCE DOOR WITH INTERLOCK BRAKE SYSTEM
 -WITH WHEEL CHAIR LIFT DOOR AIR LOCK
 -AIR COMPRESSOR WABCO DIRECT DRIVE ON VOLVO ENGINE
 -UNLOAD TAG SUSPENSION SYSTEM

NOTE 1 : SoXX AND SoXX ARE ELECTRIC CONNECTORS NAME TAG.

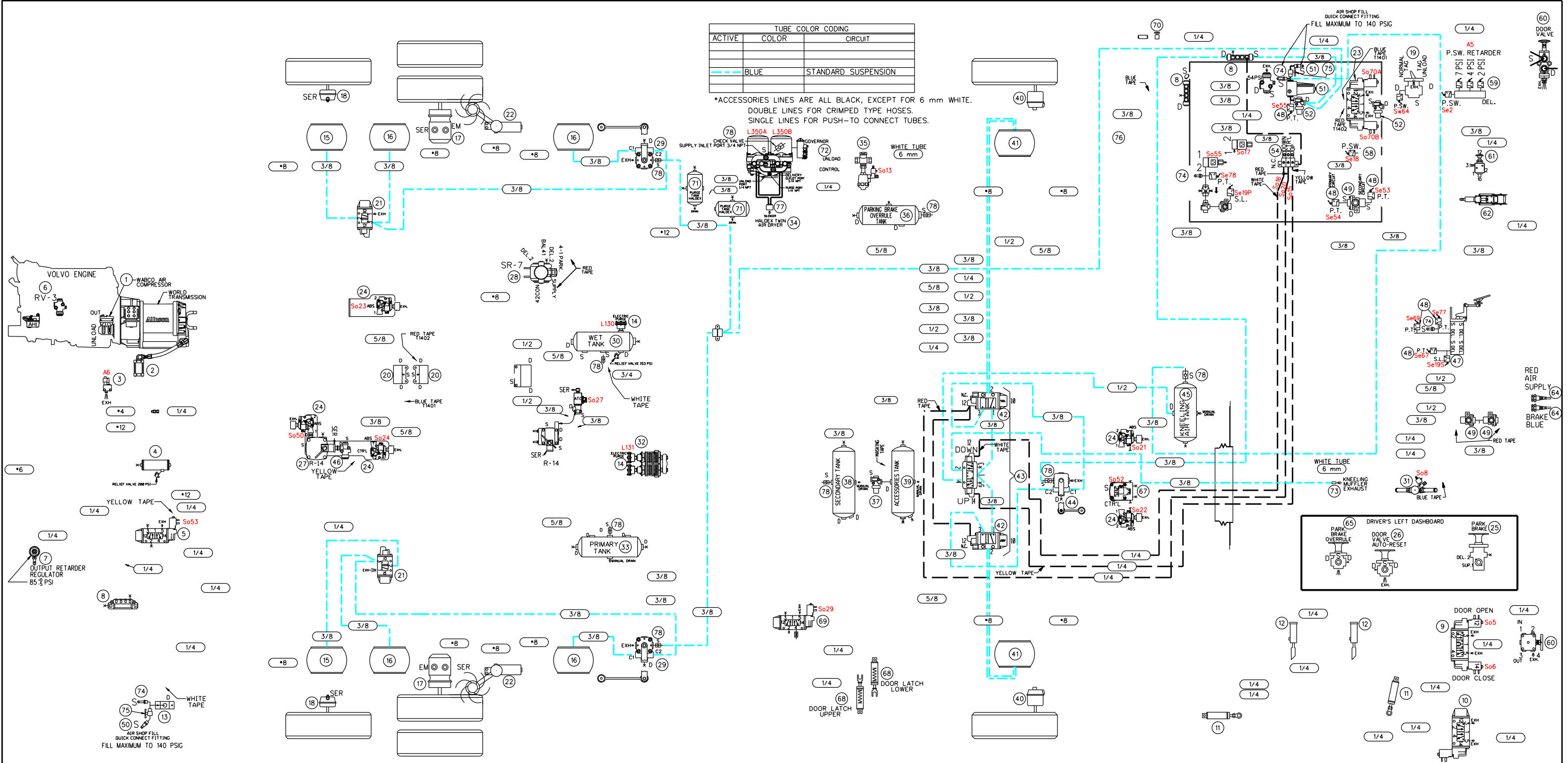
LEGENDE:		S.L. : SUPPLY LINE	
-SER- : SERVICE	-RES- : RECEIVER SERVICE	-A.C.- : AIR LINE	-M.B.- : MOUNTING BRACKET
-EM- : EMERGENCY	-P- : PRESSURE (ALIMENTATION)	-P.T.- : PARKING BRAKE	-P.S.- : PARKING BRAKE
-EXH- : EXHAUST	-A- : ACCESSoire (OEL)	-B- : BLOC	-D- : DRAIN
-BAL- : BALANCE	-T- : THERMISTE (OU DELI.)	-S- : SOLENOIDE	-S- : SOLENOIDE
	-S- : ALIMENTATION (SUPPLY)	-SP- : SPRING	

PREVOST

PNEUMATIC SCHEMATIC X3 NYCTA
 REAR BRAKE , PRIMARY GREEN COLOR TUBES

REV.: A
 DATE: 2020/09/28

PAGE:
 D140445 P9



TUBE COLOR CODING		
ACTIVE	COLOR	CIRCUIT
	Blue	STANDARD SUSPENSION

*ACCESSORIES LINES ARE ALL BLACK, EXCEPT FOR 6 mm WHITE.
 DOUBLE LINES FOR CRIMPED TYPE HOSES.
 SINGLE LINES FOR PUSH-TO CONNECT TUBES.

020 ROTATIVE CHAIN SYSTEM BLOC MANIFOLD	040 FRONT BRAKE CHAMBER, KNORR TYPE 24	060 ENTRANCE DOOR MANUAL VALVE, NORGREN D-PRO V82	080
019 LIFT TAG AXLE VALVE BENDIX, TW-1	039 ACCESSORIES AIR TANK, JOHNSON WELDING	059 PRESSURE SWITCH N.O. ALLISON	079
018 TAG AXLE BRAKE CHAMBER KNORR, TYPE 14	038 SECONDARY AIR TANK, JOHNSON WELDING	058 PRESSURE REDUCING VALVE, BENDIX RV-3	078 CHECK VALVE
017 DRIVE AXLE BRAKE CHAMBER, KNORR TYPE 24/24	037 PROTECTION VALVE, BENDIX PR-4, 85 PSI	057 PRESSURE REDUCING VALVE, BENDIX RV-3	077 SILENCER HALDEX AIR DRYER
016 DRIVE AXLE AIR SPRING GOODYEAR, TR11	036 PARKING BRAKE OVERRULE AIR TANK, JOHNSON WELDING	056 INLINE QUICK RELEASE VALVE BENDIX, QR-L	076 FLOATING TEE FITTING
015 TAG AXLE AIR SPRING GOODYEAR, TR12	035 3-WAYS HEATER VALVE SOLENOID BURKERT, SYSTEM 2006	055 SOLENOID ENTRANCE DOOR INTERLOCK PARKER 7131	075 AIR MANUAL VALVE ON-OFF
014 ELECTRIC PURGE HALDEX OIL SEPARATOR	034 HALDEX TWIN AIR DRYER	054 MANIFOLD VALVE NORGREN D0043	074 SCHRADER VALVE 645-LB GATES
013 REAR AIR FILL VALVE	033 PRIMARY AIR TANK, JOHNSON WELDING	053 PARKING BRAKE INTERLOCK, PARKER 7131	073 KNEELING MUFFLER EXHAUST
012 ENTRANCE DOOR LOCK CYLINDER Bimba, 7/8" DIA X 5" STROKE	032 OIL SEPARATOR, HALDEX CONSEP	052 PROTECTION VALVE, BENDIX PR-4, 70 PSI	072 GOVERNOR FOR AIR COMPRESSOR WABCO
011 ENTRANCE DOOR CYLINDER Bimba, 2.5" DIA X 5" STROKE	031 2-WAYS HEATER VALVE SOLENOID ASCO, SYSTEM 2014	051 AIR FILTER ASCO NUMATICS 71035	071 PURGE TANK HALDEX WITH MANUAL DRAIN VALVE
010 ENTRANCE DOOR LOCK SOLENOID VALVE NORGREN, V60	030 WET TANK, JOHNSON WELDING	050 QUICK CONNECT FITTING AIR HOSE	070 DRIVER AIR SEAT MANUAL VALVE
009 ENTRANCE DOOR BY-FOLD SOLENOID VALVE NORGREN, V60	029 REAR HEIGHT CONTROL VALVE, BARKSDALE 52341	049 DOUBLE CHECK VALVE, BENDIX DC-4	069 WHEEL CHAIR LIFT DOOR LOCK SOLENOID VALVE NORGREN, V60
008 AIR MANIFOLD BLOC, PARKER 24M	028 I VALVE FOR PARKING BRAKE, BENDIX SR-7	048 PRESSURE TRANSDUCER, VOLVO	068 WHEEL CHAIR LIFT DOOR LOCK CYLINDER Bimba, 1.75" DIA X 1" STROKE
007 REGULATOR OUTPUT RETARDER, NORGREN RO6	027 VALVE FOR SERVICE BRAKE, BENDIX R-14	047 STOP LIGHT SWITCH, BENDIX	067 FRONT BRAKES VALVES, BENDIX RELAY VALVE ATR-6
006 PRESSURE REDUCTOR VALVE AHI, BENDIX RV-3	026 DOOR VALVE AUTO-RESET	046 INVERSION VALVE, BENDIX TR-3	066 BENDIX ATC VALVE
005 TAG UNLOAD VALVE, NORGREN V60	025 PARKING BRAKE VALVE BENDIX, PP-1	045 KNEELING AIR TANK, JOHNSON WELDING	065 EMERGENCY PARKING BRAKE OVERRULE VALVE, BENDIX RD-3
004 PING TANK, JOHNSON WELDING	024 ABS VALVE MODULATOR BENDIX M40-OR WITH SILENCER	044 FRONT HEIGHT CONTROL VALVE, BARKSDALE 52341	064 QUICK COUPLING PARKER, L2C
003 ALLISON SOLENOID VALVE	023 ROTATIVE CHAIN SYSTEM DRIVE AXLE SOLENOID	043 KNEELING SUSPENSION VALVE, NORGREN NUGGET 200	063 BRAKE VALVE PEDAL BENDIX, E-10P
002 ALLISON TRANSMISSION RETARDER CYLINDER	022 SWIVEL CHAIN UNIT WITH ARM ASSEMBLY	042 KNEELING SUSPENSION VALVE, NORGREN NUGGET 200	062 STEERING WHEEL COLUMN, ZF
001 AIR COMPRESSOR WABCO 636	021 REAR SUSPENSION VALVE NORGREN, NUGGET 200	041 FRONT AIR SPRING, GOODYEAR 1R12	061 ADJUSTABLE STEERING WHEEL MANUAL VALVE, MAC 1111A-032
ITEM DESCRIPTION	ITEM DESCRIPTION	ITEM DESCRIPTION	ITEM DESCRIPTION

VEHICLE DESCRIPTION : -COACH X3 WITH FRONT BEAM AXLE SUSPENSION
 -SUSPENSION FRONT KNEELING SYSTEM
 -TRANSMISSION WORLD WITH "RETARDER"
 -ABS BRAKE SYSTEM WITH "PARKING BRAKES OVERRULE"
 -HALDEX TWIN AIR DRYER WITH HALDEX OIL SEPARATOR
 -TOWING QUICK CONNECT FRONT BUMPER
 -BY-FOLD ENTRANCE DOOR WITH INTERLOCK BRAKE SYSTEM
 -WITH WHEEL CHAIR LIFT DOOR AIR LOCK
 -AIR COMPRESSOR WABCO DIRECT DRIVE ON VOLVO ENGINE
 -UNLOAD TAG SUSPENSION SYSTEM

NOTE 1 : SoXX AND SoXX ARE ELECTRIC CONNECTORS NAME TAG.

LEGENDE:		LEGENDE:	
SER: SERVICE	RES: RESEPARATOR SERVICE	ALL: AIR LINE BRID	ALL: AIR LINE BRID
EM: EMERGENCY	P: PRESSION (ALIMENTATION)	AC: AIR COMPRESSOR	AC: AIR COMPRESSOR
EXH: EXHAUST	AT: ACCESSORE (DEL)	PS: PRESSURE SWICH	PS: PRESSURE SWICH
BAL: BALANCE	DI: DELIVERY (DI DEL)	AB: AIR	AB: AIR
	S: ALIMENTATION (SUPPLY)	DR: DRAIN	DR: DRAIN
		SO: SOLENOIDE	SO: SOLENOIDE
		SP: SPRING	SP: SPRING

PREVOST

PNEUMATIC SCHEMATIC X3 NYCTA
 SUSPENSION SYSTEM ONLY

REV.: A
 DATE: 2020/09/28

PAGE: D140445 P10