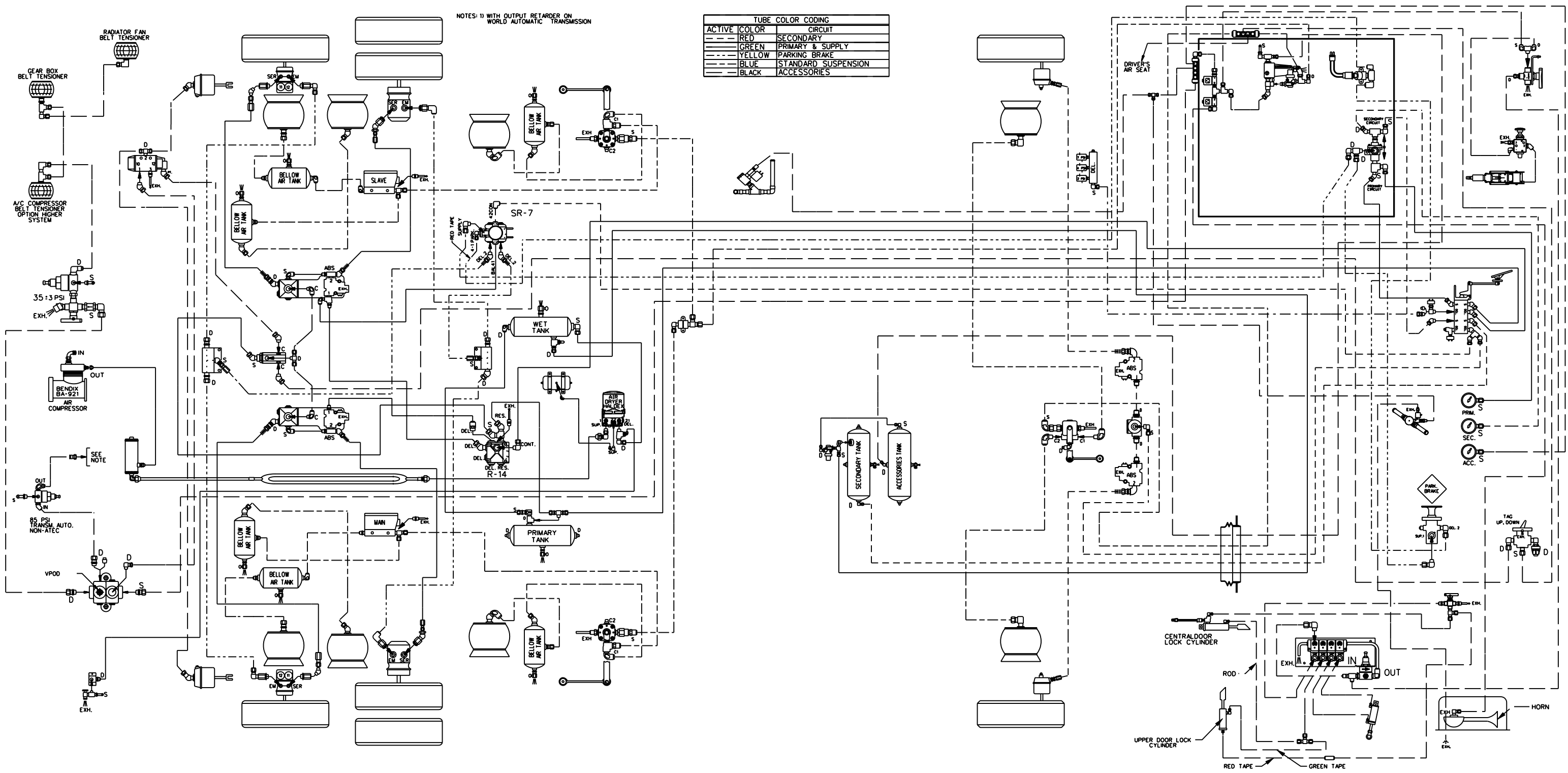


NOTES: 1) WITH OUTPUT RETARDER ON WORLD AUTOMATIC TRANSMISSION

ACTIVE	COLOR	CIRCUIT
---	RED	SECONDARY
---	GREEN	PRIMARY & SUPPLY
---	YELLOW	PARKING BRAKE
---	BLUE	STANDARD SUSPENSION
---	BLACK	ACCESSORIES



PREVOST

DESCRIPTION: X3-45 COACH WITH FRONT I-BEAM AXLE FULL PNEUMATIC SYSTEM

EFF. W/ VEH : #7-9035...
 DATE: 2006/08 REV.: B

PAGE: D140331 P1.1