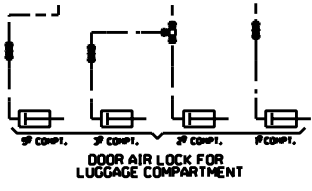
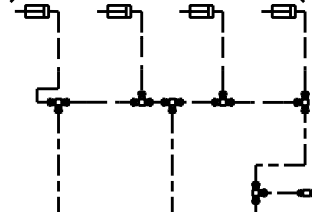


| ACTIVE COLOR | CIRCUIT          |
|--------------|------------------|
| → → → RED    | SECONDARY        |
| → → → GREEN  | PRIMARY & SUPPLY |
| → → → YELLOW | PARKING BRAKE    |
| → → → BLUE   | SUSPENSION       |
| → → → BLACK  | ACCESSORIES      |

DOOR AIR LOCK FOR LUGGAGE COMPARTMENT



NOTE #1 : OPTION OUTPUT RETARDER ON TRANSMISSION.  
 #2 : N.C. = NORMALY CLOSE  
 N.O. = NORMALY OPEN