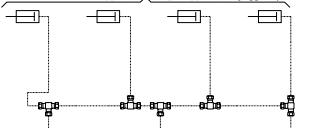
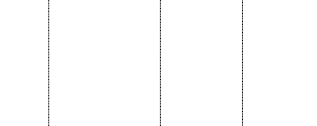


ACTIVE	COLOR	CIRCUIT
→ →	RED	SECONDARY
→ →	GREEN	PRIMARY & SUPPLY
→ →	YELLOW	PARKING BRAKE
→ →	BLUE	SUSPENSION
→ →	BLACK	ACCESSORIES

DOOR AIR LOCK FOR LUGGAGE COMPARTMENT



DOOR AIR LOCK FOR LUGGAGE COMPARTMENT



NOTE #1 : OPTION OUTPUT RETARDER ON TRANSMISSION.

#2 : N.C. = NORMALLY CLOSE
N.O. = NORMALLY OPEN