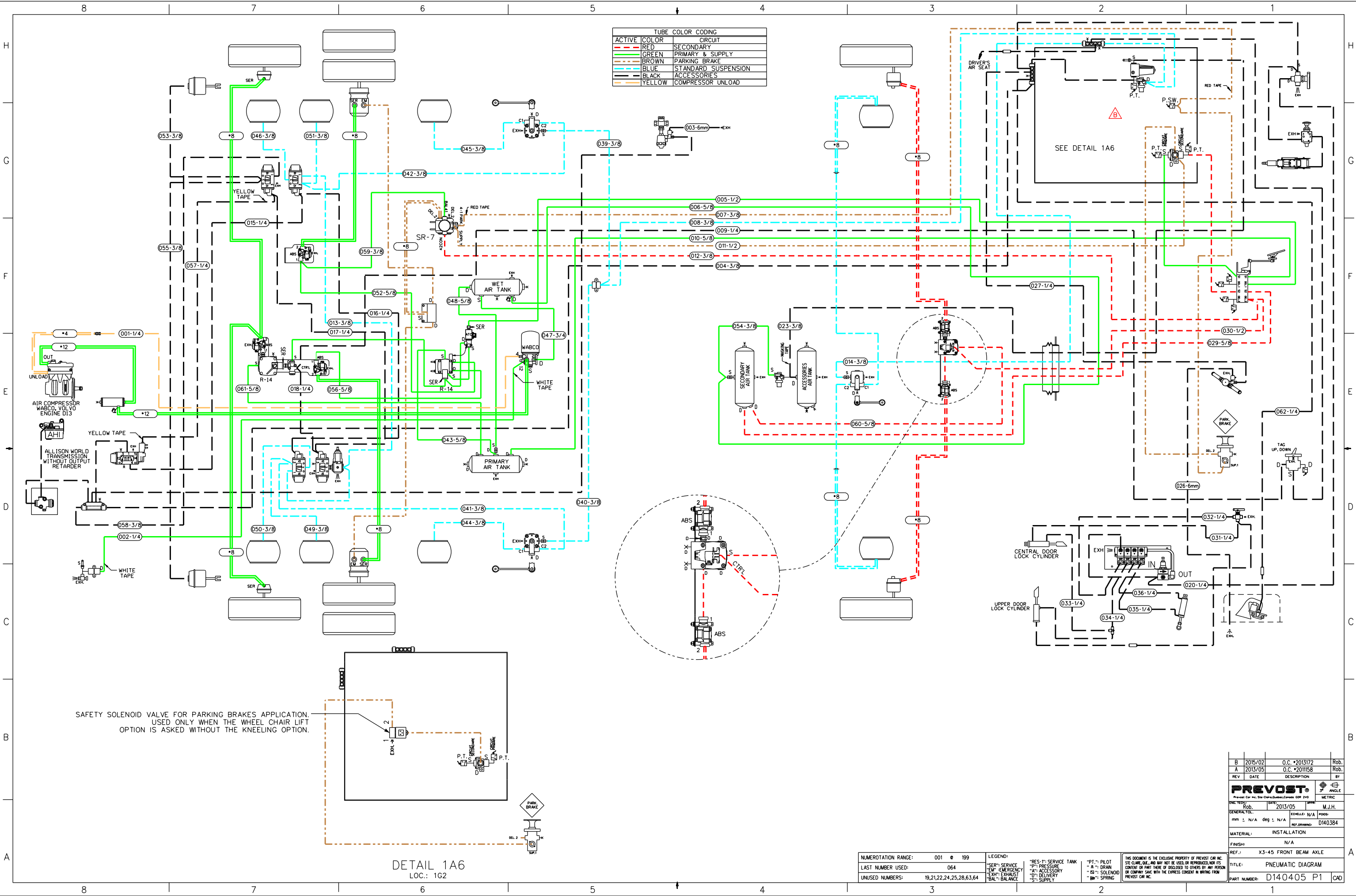
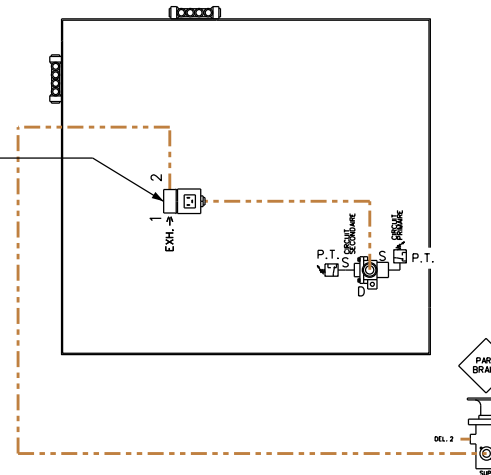


TUBE COLOR CODING	
RED	SECONDARY
GREEN	PRIMARY & SUPPLY
BROWN	PARKING BRAKE
BLUE	STANDARD SUSPENSION
BLACK	ACCESSORIES
YELLOW	COMPRESSOR UNLOAD



SAFETY SOLENOID VALVE FOR PARKING BRAKES APPLICATION.  
USED ONLY WHEN THE WHEEL CHAIR LIFT  
OPTION IS ASKED WITHOUT THE KNEELING OPTION.



NUMERATION RANGE:	001 @ 199
LAST NUMBER USED:	064
UNUSED NUMBERS:	19,21,22,24,25,28,63,64

LEGEND:	"RES-1": SERVICE TANK	"P.T.": PILOT
"SER": SERVICE	"P": PRESSURE	"A": DRAIN
"EM": EMERGENCY	"AS": ACCESSORY	"S": SOLENOID
"EXH": EXHAUST	"D": DELIVERY	"SP": SPRING
"BAL": BALANCE	"S": SUPPLY	

THIS DOCUMENT IS THE EXCLUSIVE PROPERTY OF PREVOST CAR INC.  
SEE CLAUSE ONE AND TWO NOT BE USED OR REPRODUCED FOR ITS  
CONTENT OR PART THERE OF DISCLOSED TO OTHERS BY ANY PERSON  
OR COMPANY SAVE WITH THE EXPRESS CONSENT IN WRITING FROM  
PREVOST CAR INC.

B	2015/02	O.C. #2013172	Rob.
A	2013/05	O.C. #2011158	Rob.
REV	DATE	DESCRIPTION	BY
<b>PREVOST</b>			
Project Car Inc. Ste-Clotilde, Quebec G0P 2V0			
DESIGNED:	DATE:	BY:	SCALE:
Rob.	2013/05	M.J.H.	3"
GENERAL TOL:	EDGELLE: N/A	POSS:	
mm ± N/A	deg ± N/A	REF. DRAWING:	D140384
MATERIAL:	INSTALLATION		
FINISH:	N/A		
REF.:	X3-45 FRONT BEAM AXLE		
TITLE:	PNEUMATIC DIAGRAM		
PART NUMBER:	D140405 P1 CAD		