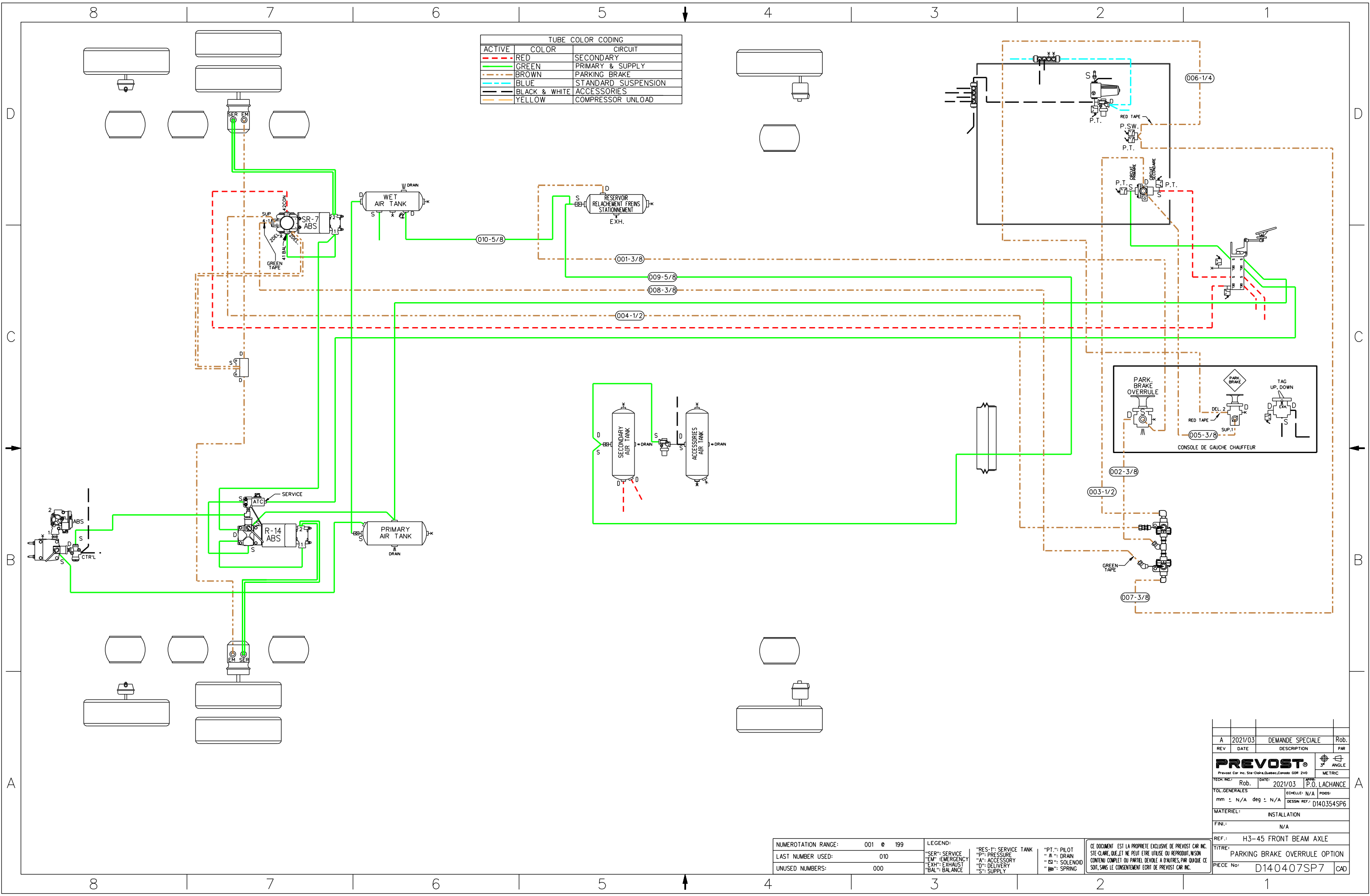


ACTIVE	COLOR	CIRCUIT
- - -	RED	SECONDARY
—	GREEN	PRIMARY & SUPPLY
- - -	BROWN	PARKING BRAKE
- - -	BLUE	STANDARD SUSPENSION
- - -	BLACK & WHITE	ACCESSORIES
- - -	YELLOW	COMPRESSOR UNLOAD



NUMEROTATION RANGE:	001 @ 199
LAST NUMBER USED:	010
UNUSED NUMBERS:	000

LEGEND:	"RES-1": SERVICE TANK	"PT-1": PILOT
"SER": SERVICE	"P": PRESSURE	"A": DRAIN
"EM": EMERGENCY	"A": ACCESSORY	"S": SOLENOID
"EXH": EXHAUST	"D": DELIVERY	"SP": SPRING
"BAL": BALANCE	"S": SUPPLY	

CE DOCUMENT EST LA PROPRIETE EXCLUSIVE DE PREVOST CAR INC. SIE-CLARE, QUE ET NE PEUT ETRE UTILISE OU REPRODUIT, NI SON CONTENU COMPLET OU PARTIEL DEVOLU A D'AUTRES, PAR QUOIQUE CE SOIT, SANS LE CONSENTEMENT ECRIT DE PREVOST CAR INC.

REV	A	2021/03	DEMANDE SPECIALE	Rob.
DATE			DESCRIPTION	PAR
PREVOST				
<small>Prevost Car Inc. Ste-Clare, Quebec, Canada QOR 2V0</small>				
TECH.:	Rob.	DATE:	2021/03	DR.:
VOL. GENERALES		ECHELLE: N/A		POSS:
mm ± N/A deg ± N/A		DESSIN REF.: D140354SP6		
MATERIEL: INSTALLATION				
FINI: N/A				
REF.: H3-45 FRONT BEAM AXLE				
TITRE: PARKING BRAKE OVERRULE OPTION				
PIECE No: D140407SP7				CAD