

REPLACEMENT OF CONDENSER COMPARTMENT DOOR ON XL2 COACHES IN CASE OF CORROSION

MATERIAL

Kit #485442 includes the following parts:


Part No.	Description	Qty
483536	Door Assembly, Condenser	1
IS-01061	Instruction Sheet	1
FI-01061	Feuille d'instructions	1

PROCEDURE

⚠ WARNING ⚠

Park vehicle safely, apply parking brake, stop engine and set battery master switch(es) to the OFF position prior to working on the vehicle.

SPRING NUTS REPLACEMENT

If premature corrosion of the spring nuts was noticed on the condenser compartment door, these may be changed to correct this problem. To do so, order (Prevost #481249)  as required, unfasten the screw then remove and replace the corroded spring nut(s).

CONDENSER DOOR

A – DOOR REPLACEMENT

1. Open former condenser compartment door, support condenser while unfastening the screws fixing the condenser to the door.

⚠ CAUTION ⚠

Two people are required to remove the condenser compartment door.

⚠ WARNING ⚠

Support the door properly to prevent it from falling.

2. Remove the door by unfastening the hinge screws.
3. Install the new condenser compartment door.

B – DOOR ADJUSTMENT

1. Open the condenser compartment door.
2. Loosen the screws fixing the hinge to hinge attachment or hinge to door assembly. Loosening the screws allows the condenser door assembly to be shifted "LEFT or RIGHT" and "UP or DOWN" or "IN and OUT".
3. Adjust condenser door assembly position at the hinge.
4. Tighten the screws.
5. Respect the required gap between exterior finishing panels.
6. Check that the door swings freely and closes properly. It may be necessary to adjust the door latch to get proper fit and operation.

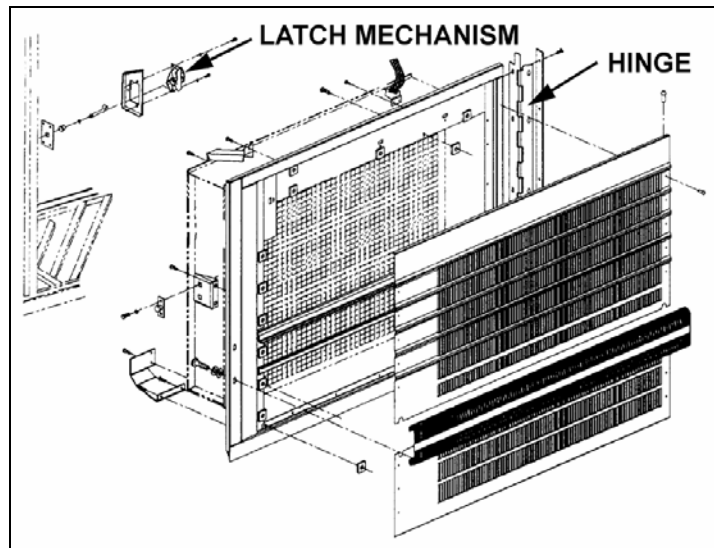


FIGURE 1: CONDENSER DOOR ADJUSTMENT

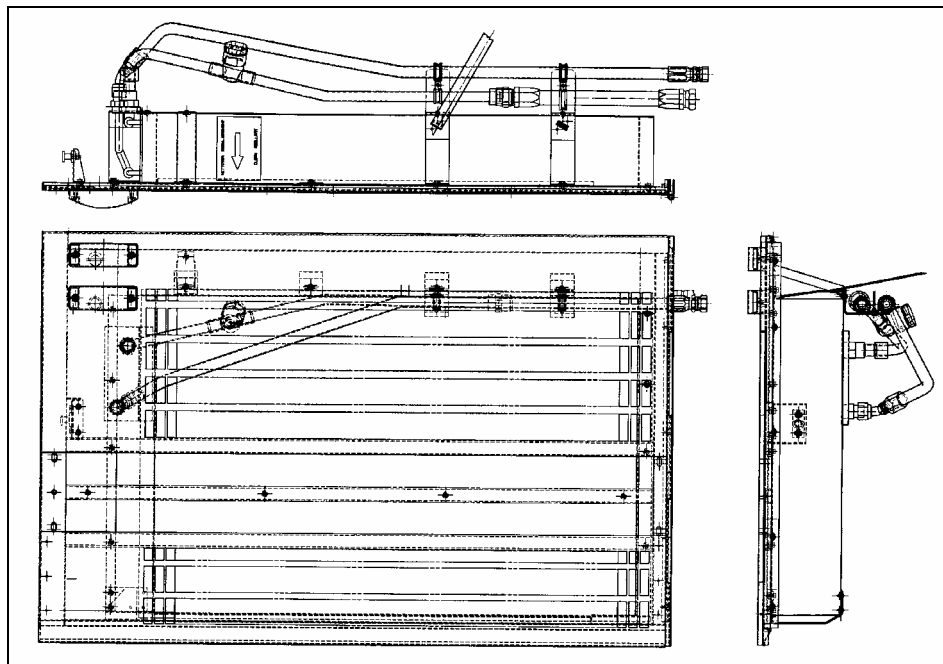


FIGURE 2: NEW CONDENSER DOOR TOP, FRONT AND SIDE VIEW