

### EXTERIOR COMPARTMENTS DOOR LOCKS REPLACEMENT

REVISION : A

Typing error, in kit #288546, lever is #288539

**Warning:** Park vehicle safely, apply parking brake, stop engine and set battery master switch(es) to the OFF position prior to working on the vehicle.

#### ENTRANCE DOOR LOCK

Kit #288545 includes the following parts:

Part No.	Description	Qty
288324	Lever	1
288543	Cap	1
507212	O-ring	1
IS-03064	Instruction Sheet	1
FI-03064	Feuille d'instructions	1

#### PROCEDURE

##### LOCK REMOVAL

1. Remove the door internal mechanism access panel (figure 1).
2. Dismount the rod and the lever (see figure 3). Unscrew the nut retaining the lock and remove the lock (figure 2).

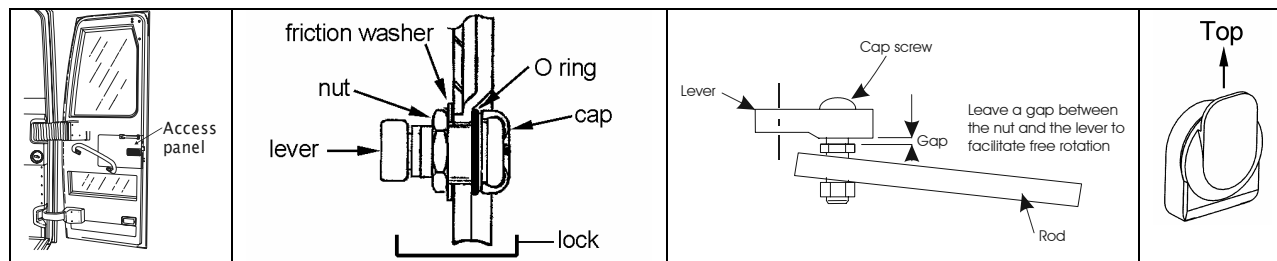


FIGURE 1

FIGURE 2

FIGURE 3

FIGURE 4

##### INSTALLATION

3. Fit the cap (figure 4) to the lock and place the O-ring in order to have it pressed between the door and the cap once installed (figure 2).
4. Insert the lock in the door opening. The cap must be oriented as shown on figure 4.

- On the inside, apply a caulking compound for watertightness. Place the friction washer and then tighten the nut (make sure that the cap is functioning properly once the lock is installed). Install the new lever #288324 and the rod. Leave a gap between the nut and the lever to permit free rotation of the lever (figure 3). Test the functioning.

## MAIN POWER COMPARTMENT DOOR LOCK

Kit # 288549 includes the following parts:

Part No.	Description	Qty
288538	Lever	1
288543	Cap	1
288806	Convex spacer	1
507212	O-ring	1
IS-03064	Instruction Sheet	1
FI-03064	Feuille d'instructions	1

## PROCEDURE

### LOCK REMOVAL

- Detach the rod, the rod retainer and keep for later use. Remove the lever. Unscrew the nut that retains the lock and remove the lock (figure 5).

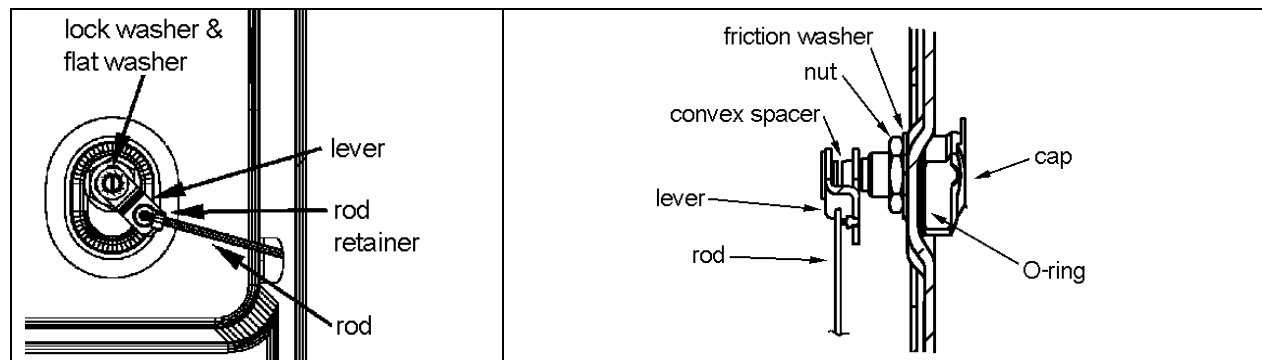


FIGURE 5

FIGURE 6

### INSTALLATION

- Fit the cap to the lock and place the O-ring in order to have it pressed between the door and the cap once installed (figure 6).
- Insert the lock in the door opening. The cap must be oriented as shown on figure 4.
- On the inside, apply a caulking compound for watertightness. Place the friction washer and then tighten the nut (make sure that the cap is functioning properly once the lock is installed). Place the convex spacer and screw on the new lever #288538, using the lock washer and the flat washer. Install the rod retainer to the lever and fix the rod.

## SMALL FUEL FILLER DOOR LOCK

Kit # #288548 includes the following parts:

Part No.	Description	Qty
288543	Cap	1
288806	Convex spacer	1
288807	Latch	1
507212	O-ring	1
561761	Heat shrinking sleeve ½" long	1
IS-03064	Instruction Sheet	1
FI-03064	Feuille d'instructions	1

## PROCEDURE

### LOCK REMOVAL

1. From the inside, remove the latch. Unscrew the nut retaining the lock and then remove the lock (figure 7).

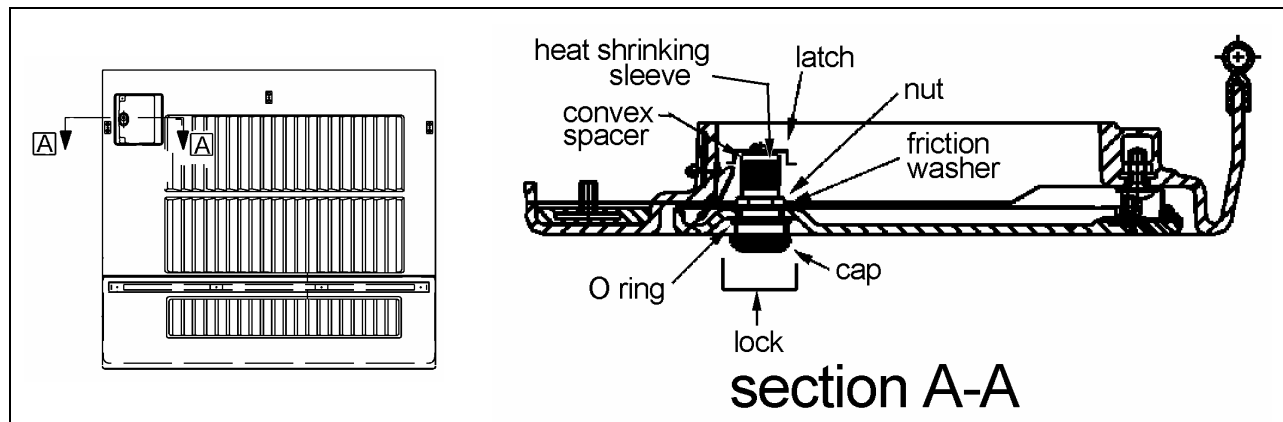


FIGURE 7: SMALL FUEL FILLER DOOR

### INSTALLATION

2. Fit the cap to the lock and place the O-ring in order to have it pressed between the door and the cap once installed (figure 7).
3. Insert the lock in the door opening. The cap must be oriented as shown on figure 4.
4. On the inside, place the friction washer and then tighten the nut (make sure that the cap is functioning properly once the lock is installed). Place the heat shrinking sleeve on the extremity of the lock to cover the slots on the cylinder. This will prevent water infiltration inside the lock. Heat the sleeve.
5. Place the convex spacer and then screw the latch in place using the lock washer and the flat washer. The latch must be horizontal to permit locking of the door.

## LARGE FUEL FILLER DOOR (RIGHT AND LEFT SIDE, VIP WITH SMALL A/C)

Kit # 288550 (R.H. side) includes the following parts:

Part No.	Description	Qty
288543	Cap	1
288806	Convex spacer	1
477472	Lever, right	1
507212	O-ring	1
IS-03064	Instruction Sheet	1
FI-03064	Feuille d'instructions	1

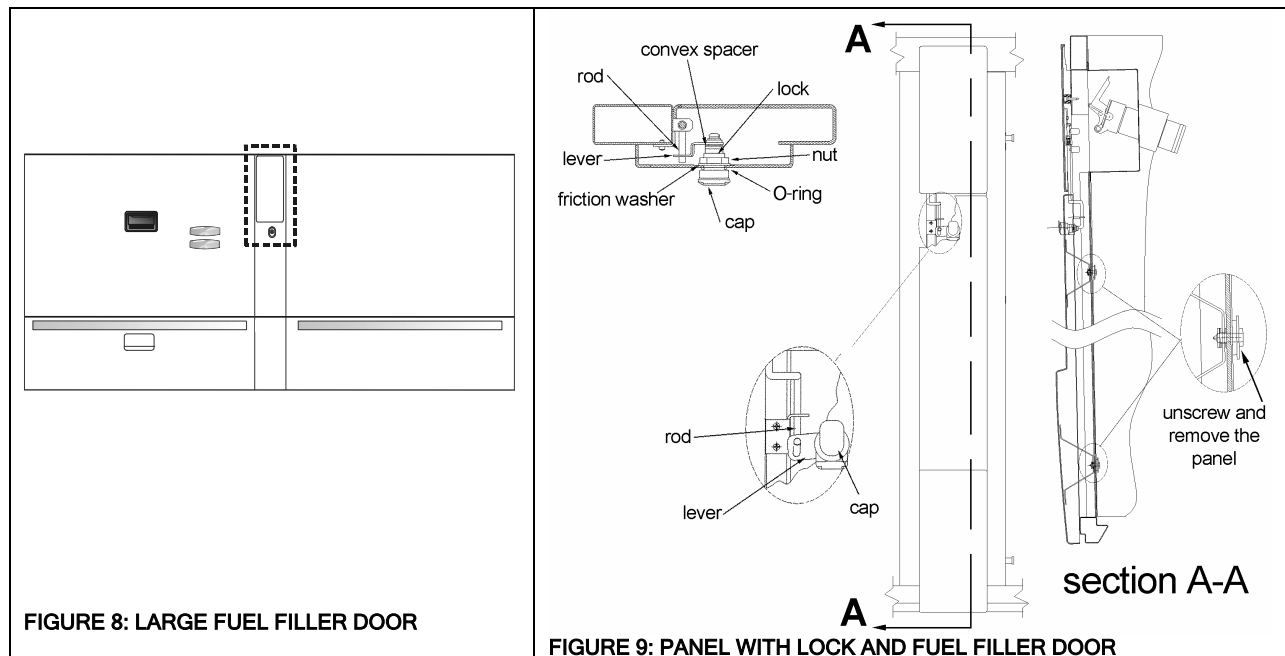
Kit # 288551 (L.H. side) includes the following parts:

Part No.	Description	Qty
288543	Cap	1
288806	Convex spacer	1
477471	Lever, left	1
507212	O-ring	1
IS-03064	Instruction Sheet	1
FI-03064	Feuille d'instructions	1

## PROCEDURE

### LOCK REMOVAL

1. Remove the panel on which the lock is fixed. To do this, unscrew the panel attachment points as shown on figure 9, section A-A.
2. On the inside, remove the lever. Unscrew the nut retaining the lock and remove the lock (figure 9).



## INSTALLATION

3. Fit the cap to the lock and place the O-ring in order to have it pressed between the door and the cap once installed (figure 9).
4. Insert the lock in the door opening. The cap must be oriented as shown on figure 4.
5. On the inside, place the friction washer and then tighten the nut (make sure that the cap is functioning properly once the lock is installed). Place the convex spacer and screw on the new lever, using the lock washer and the flat washer. Install the rod retainer to the lever and fix the rod. Position the lever as shown on figure 9.
6. Reinstall the panel. Make sure the rod is well connected with the lever.

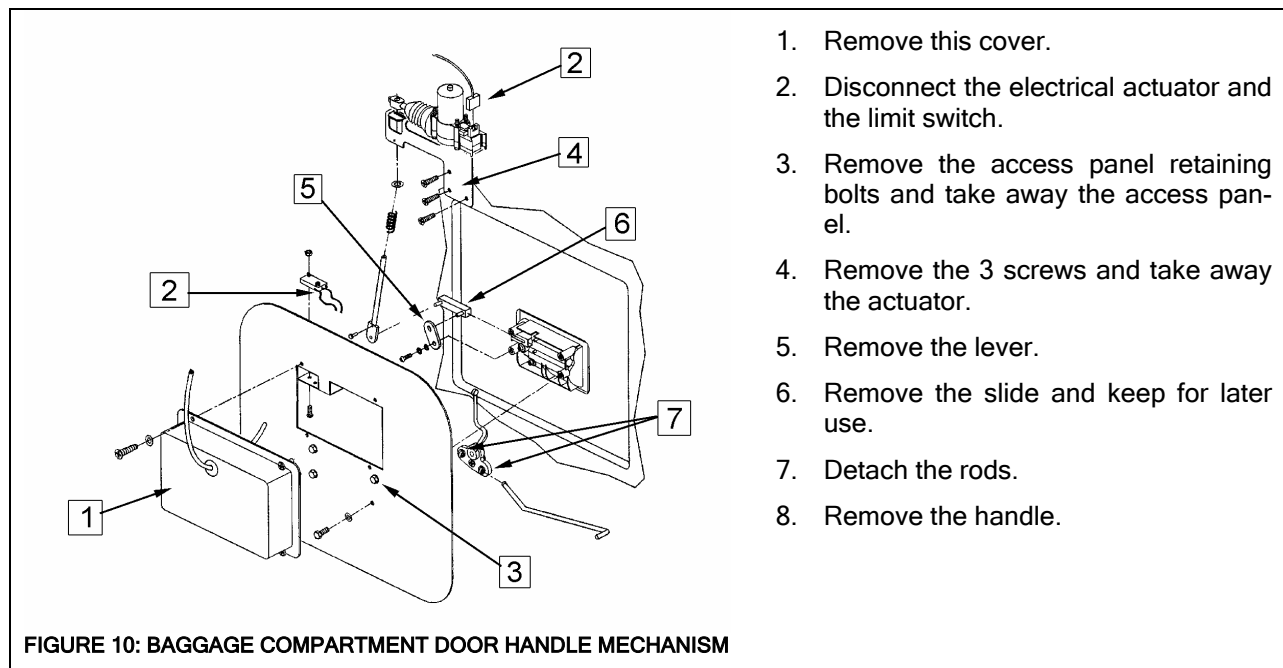
## ELECTRICAL LOCK AND BAGGAGE COMPARTMENT DOOR HANDLE

Kit #288546 includes the following parts:

Part No.	Description	Qty
288539	Lever	1
780711	Baggage compartment door handle, electrical locking	1
IS-03064	Instruction Sheet	1
FI-03064	Feuille d'instructions	1

## PROCEDURE

### HANDLE REMOVAL



1. Remove this cover.
2. Disconnect the electrical actuator and the limit switch.
3. Remove the access panel retaining bolts and take away the access panel.
4. Remove the 3 screws and take away the actuator.
5. Remove the lever.
6. Remove the slide and keep for later use.
7. Detach the rods.
8. Remove the handle.

FIGURE 10: BAGGAGE COMPARTMENT DOOR HANDLE MECHANISM

### HANDLE AND LOCK INSTALLATION

9. Insert the rotor inside the cylinder lock. The cylinder should already be inserted in the handle. The cylinder and rotor assembly (figure 11) must be positioned so that the key-hole is on right (figure 12) and the flat side of the rotor must face down (figure 13).

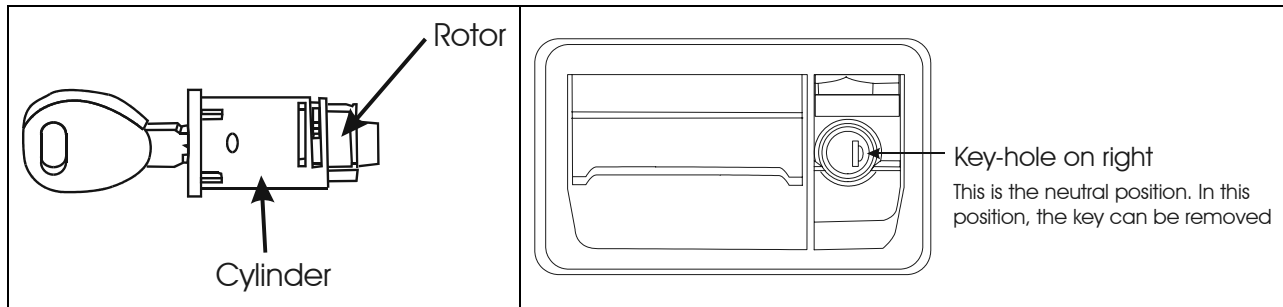


FIGURE 11

FIGURE 12

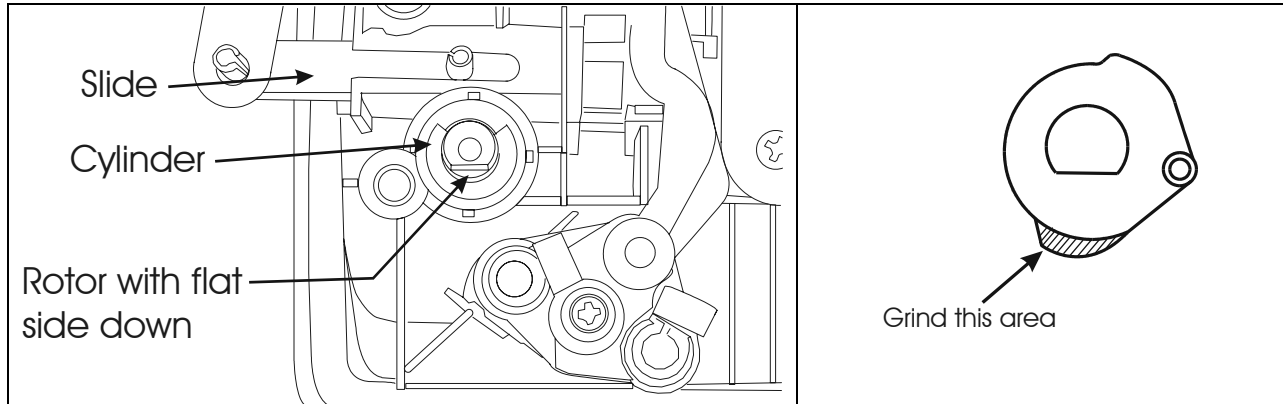


FIGURE 13

FIGURE 14

10. Grind the hatched area of the part represented on figure 14. This must be done to permit free rotation of the lever.
11. Place the part of figure 14 on the handle as shown on figure 15 (notice the flat side of the rotor facing down).
12. Install the slide onto the handle (figure 13).
13. Place lever #288539 as shown on figure 16. Screw in place using the lock washer and the flat washer.
14. Place the door handle on the door, keep it in that position. Make sure the gasket is well positioned. Screw on the electrical actuator.

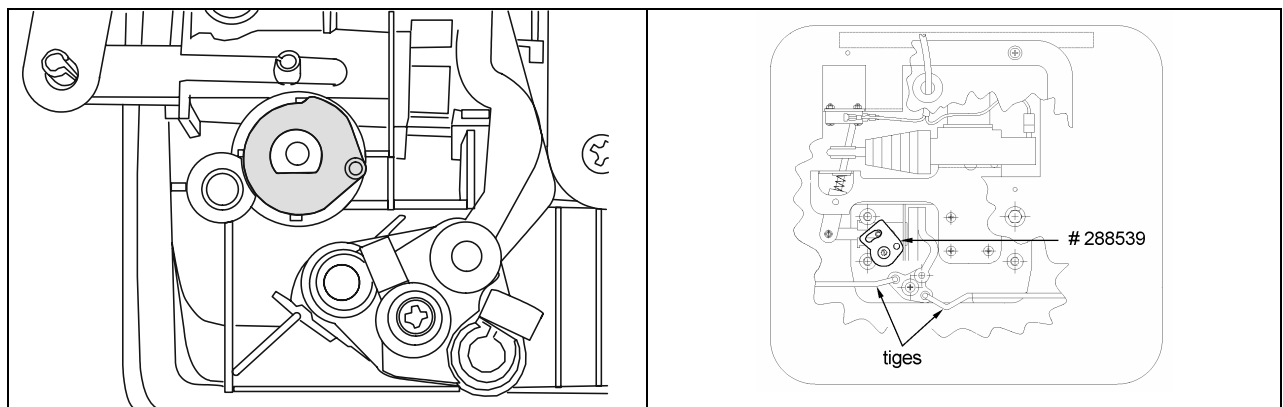


FIGURE 15

FIGURE 16

15. Attach the rods (figure 16).
16. Reinstall the access panel and fix the handle in place using the 4 bolts.

17. Connect the electrical actuator and the limit switch.
18. Reinstall the plastic cover.

## MANUAL OR PNEUMATIC LOCK AND BAGGAGE COMPARTMENT HANDLE

Kit #288547 includes the following parts:

Part No.	Description	Qty
780712	Baggage compartment door handle, manual or pneumatic locking	1
IS-03064	Instruction Sheet	1
FI-03064	Feuille d'instructions	1

## PROCEDURE

### HANDLE REMOVAL

1. Remove the access panel retaining bolts and take away the access panel to the handle mechanism (figure 17).

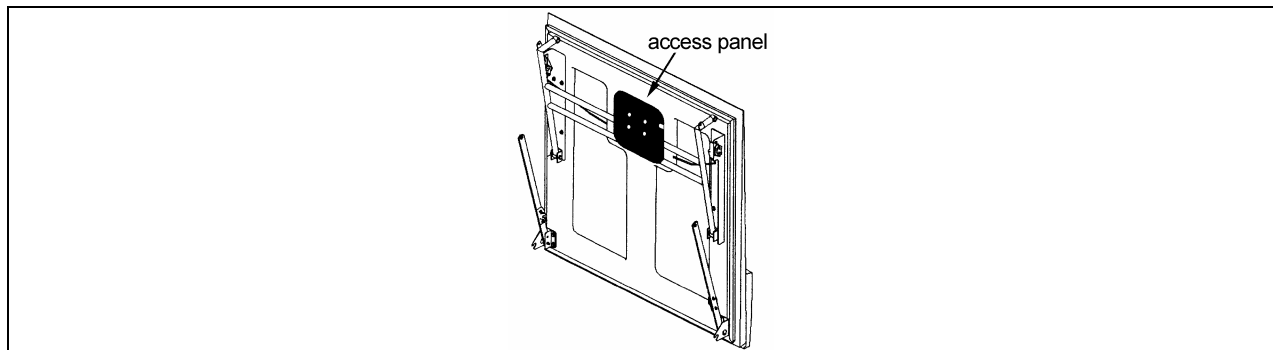


FIGURE 17

2. For a pneumatic locking handle, disconnect the air supply from the cylinder in the handle mechanism.
3. Detach the rods (see figure 16) and finally, remove the handle.

### HANDLE AND CYLINDER LOCK INSTALLATION

4. Insert the rotor inside the cylinder. The cylinder should already be inserted in the handle. The cylinder and rotor assembly (figure 11) must be positioned so that the key-hole is on right (figure 12) when the lock is on neutral position, that is the position where the key can be pulled out.
5. Place the door handle on the door, keep it in that position. Make sure the gasket is well positioned.
6. Connect the air supply to the cylinder.
7. Attach the rods to the mechanism (figure 16).
8. Reinstall the access panel and fix the handle in place using the 4 bolts.