

Instruction Sheet

KIT FOR CARD TABLE RELOCATION

A) MODIFICATION ON A "XL" COACH

B) MODIFICATION ON A "H3-40" COACH

-A-

Material

Kit #36-3079 includes the following parts.

Part no.	Description	Qty
36-3081	Hinge (female)	1
36-3002	Spacer	1
50-0596	Tapping screw #12 x 2"	3
50-4399	Snap cap washer	3
50-4400	Snap cap	3
IS-91077	Instruction Sheet	1
FI-91077	Feuille d'instructions	1

Procedure

1. Park vehicle safely, then set battery main disconnect switch(es) to the "OFF" position.
2. Determine the exact place where the card table will be installed, then position female hinge (#36-3081) on wall according to the measure given in figure on next page.

NOTE: Be sure female hinge is positioned parallel to the vehicle floor.

3. Using female hinge as a template, mark location of the 3 holes to be drilled.

4. Drill the 3 holes using a 11/64" (4,3 mm) bit. The wall and the steel tubing which is located behind the wall, have to be drilled as illustrated in figure on next page.

CAUTION: Drill bit must not exceed more than 1 9/16" (40 mm) the drill chuck.

5. Using a 1" (25,4 mm) hole saw, drill the wall at the 3 places previously drilled with a 11/64" (4,3 mm) bit.

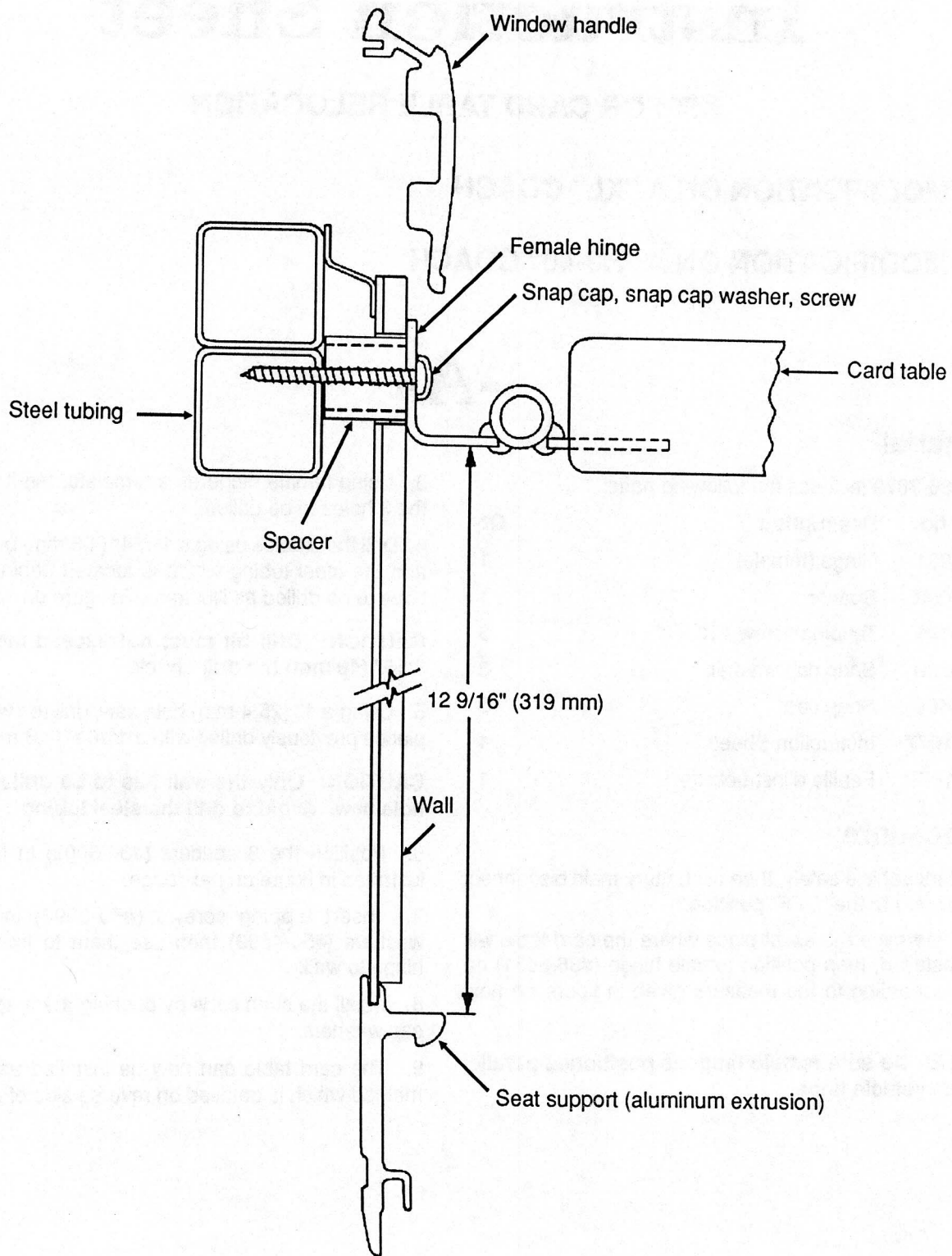
CAUTION: Only the wall has to be drilled with the hole saw. Avoid to drill the steel tubing.

6. Position the 3 spacers (#36-3002) in holes as illustrated in figure on next page.

7. Insert tapping screws (#50-0596) in snap cap washers (#50-4399) then use them to fix the female hinge to wall.

8. Install the snap caps by pushing them against snap cap washers.

9. The card table can now be installed using regular method which is detailed on reverse side of card table.



Card table relocation on "XL" coach

IS910771

-B-**MODIFICATION ON A "H3-40" COACH****Material**

Kit #36-3083 includes the following parts.

Part no.	Description	Qty
36-3080	Hinge (female)	1
36-3002	Spacer	1
50-0596	Tapping screw #12 x 2"	3
50-4399	Snap cap washer	3
50-4400	Snap cap	3
IS-91077	Instruction Sheet	1
FI-91077	Feuille d'instructions	1

Procedure

1. Park vehicle safely, then set battery main disconnect switches to the "OFF" position.

2. Determine the exact place where the card table will be installed, then position female hinge (#36-3080) on wall according to the measure given in figure on next page.

NOTE: Be sure female hinge is positioned parallel to the vehicle floor.

3. Using female hinge as a template, mark location of the 3 holes to be drilled.

4. Drill the 3 holes using a 11/64" (4,3 mm) bit. The wall and the steel tubing which is located behind the wall, have to be drilled as illustrated in figure on next page.

CAUTION: Drill bit must not exceed more than 1 9/16" (40 mm) the drill chuck.

5. Using a 1" (25,4 mm) hole saw, drill the wall at the 3 places previously drilled with a 11/64" (4,3 mm) bit.

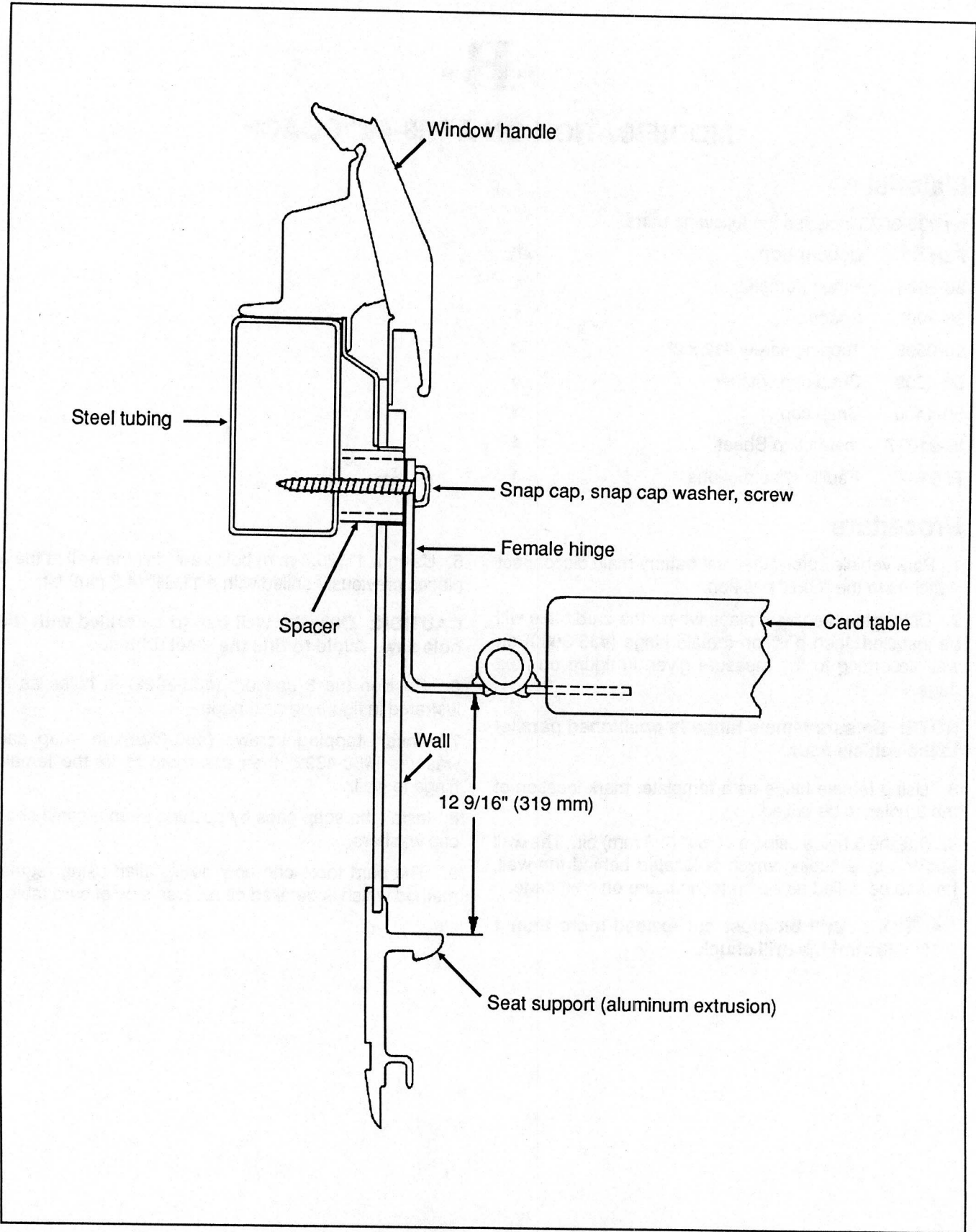
CAUTION: Only the wall has to be drilled with the hole saw. Avoid to drill the steel tubing.

6. Position the 3 spacers (#36-3002) in holes as illustrated in figure on next page.

7. Insert tapping screws (#50-0596) in snap cap washers (#50-4399) then use them to fix the female hinge to wall.

8. Install the snap caps by pushing them against snap cap washers.

9. The card table can now be installed using regular method which is detailed on reverse side of card table.



Card table relocation on "H3-40" coach

IS910772