

PROCEDURE



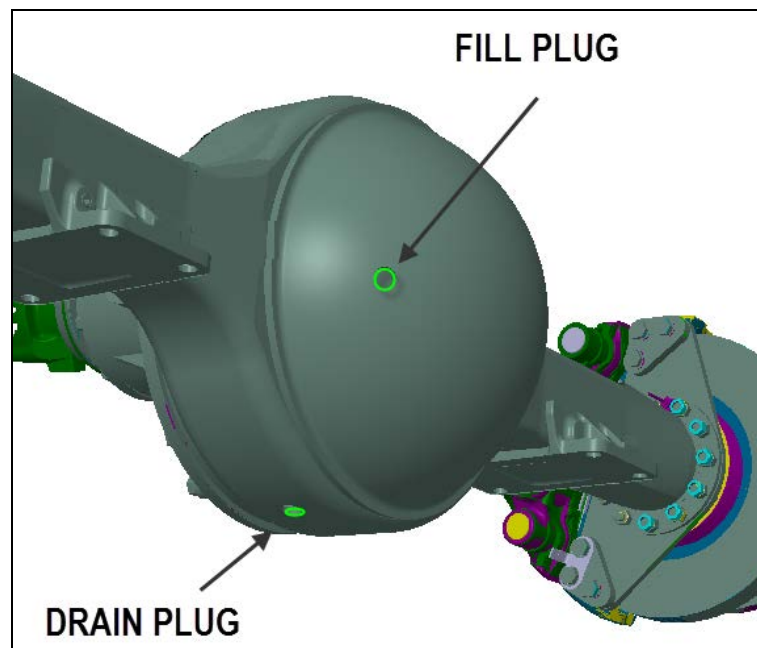
DANGER

Park vehicle safely, apply parking brake, stop engine and set battery master switch(es) to the OFF position prior to working on the vehicle.

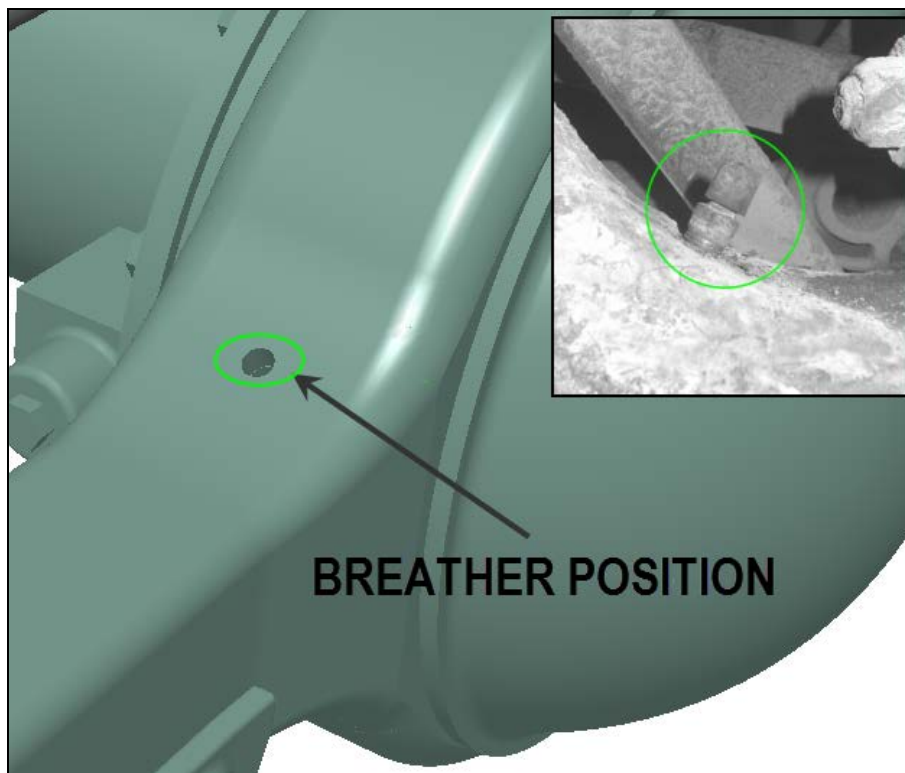
1. Raise the vehicle to gain access to the drive axle.
2. Verify that the vehicle was not previously fitted with the new breather, easily identified by the rubber "J" hose instead of a metal cap. If the vehicle is not equipped with the new breather, install one by following the instructions bellow.



3. Clean the drive axle housing around the breather and the fill and drain plugs.
4. Remove the drain plug at the bottom of the housing with a square 1/2in wrench and flush the differential oil.



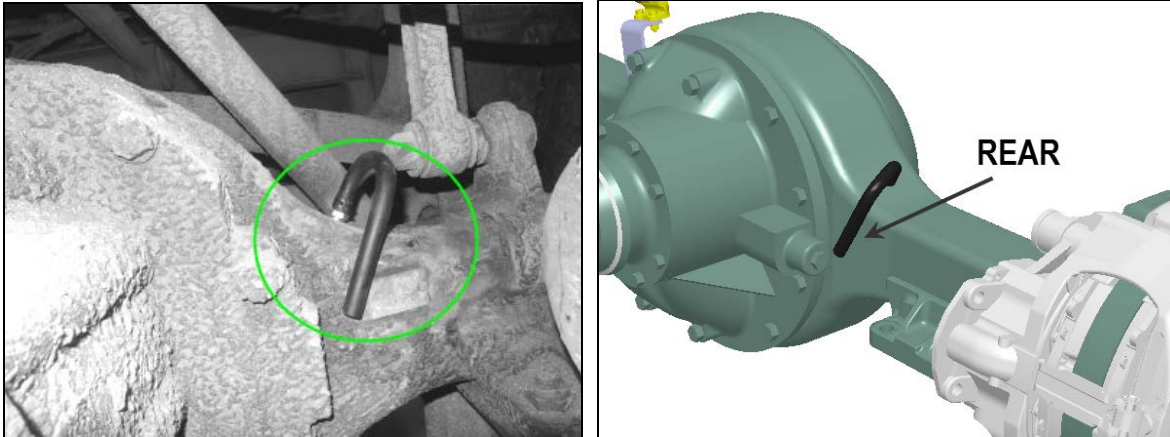
5. Remove the breather from the housing with a SAE 11/16in wrench.



6. Install the new breather body included in the kit with the same 11/16in wrench.



7. Use pliers to install and secure the “J” hose to the breather body making sure that the hose part is installed toward the rear of the vehicle.



8. With a fine metallic brush, clean the fill and drain plug threads and apply thread sealant to them.



9. Reinstall the drain plug and fill the differential housing up to the fill plug level (around 19 liters) with 85W140, 80W90 or 75W90 MIL-L-2105-D compliant gear oil.

NOTE

Refer to the vehicle Maintenance Manual, Section 24, chapter 2.2 for gear oil grade recommendation for specific vehicle use.



10. Screw back the fill plug.

11. Check for leaks and lower the vehicle.

PARTS / WASTE DISPOSAL

Discard according to applicable environmental regulations (Municipal/State[Prov.]/ Federal)

Access all our Service Bulletins on www.prevostcar.com/bulletinsEN
Or scan the QR-Code with your smart phone.

E-mail us at technicalpublications_prev@volvo.com and type "ADD" in the subject to
receive our warranty bulletins by e-mail.

