



**PREVOST**

**MAINTENANCE  
INFORMATION**

Mi97-28



|   |                    |
|---|--------------------|
| <b>DATE:</b> January 1998   | <b>SECTION:</b> 01 |
| <b>SUBJECT:</b> PROTECTION OF IDLER PULLEYS<br>BALL BEARING USED WITH<br>A/C COMPRESSOR BELT TENSIONING |                    |

**APPLICATION:**

| Model  | VIN  |
|--|--|
|  |  |
| H3 series coaches equipped with series 60 engine<br>Model Year: 1993 - 1998                    | From 2P9H33405P <u>1001316</u> up to 2PCH33497W <u>1012082</u> incl. |
| VIP motorhomes equipped with series 60 engine<br>Model Year: 1993 - 1998                       | From 2P9V33407P <u>1001305</u> up to 2PCV33494W <u>1012236</u> incl. |
| XL series coaches equipped with series 60 engine<br>Model Year: 1994 - 1998                    | From 2P9L33409R <u>1001820</u> up to 2PCL33496W <u>1026310</u> incl. |
| XL series MTH equipped with series 60 engine and central A/C system<br>Model Year: 1993 - 1998 | From 2P9M33499P <u>1001722</u> up to 2PCM33497W <u>1026417</u> incl. |

**DESCRIPTION**

On the above-mentioned vehicles, life span of idler pulleys ball bearing was extended. These pulleys are used to apply tension on A/C compressor driving belt.

**MATERIAL**

| Part No. | Description     | Qty |
|----------|-----------------|-----|
| 453078   | Pulley assembly | 1   |
| 453076   | Dust cap        | 1   |
| 052219   | Spacer          | 1   |
| 507360   | Seal, Oil       | 1   |
| 052208   | Pulley assembly | 1   |

**Note:** Material can be obtained through regular channels.

## VEHICLES EQUIPPED WITH IDLER PULLEY AND BELT PROTECTOR

### PROCEDURE

**Warning:** Park vehicle safely, apply parking brake, stop engine and set battery master switch(es) to the OFF position prior to working on the vehicle.

1. Open engine compartment rear door (s).
2. Release pressure from air bellows by means of belt tensioning pressure releasing valve. This valve is mounted in engine compartment; near the auxiliary oil tank on H3 series vehicles and above the engine doors on XL series vehicles (refer to fig. 1).

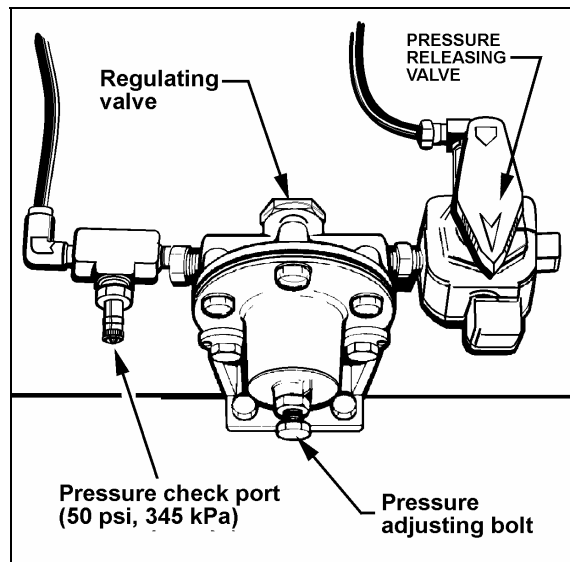


FIGURE 1: REGULATING VALVE

12018

3. Unscrew bolt securing the idler pulley which is used to apply tension on A/C compressor belt, separate parts (refer to fig. 2).
4. Put bolt, washer located underneath bolt and nut aside.
5. Fill oil seal (Prévost #507360) and pulley (Prévost #453078) with grease.

**Warning:** Use high melting point, water resistant lithium base grease.

6. Install spacer (Prévost #052219), oil seal (Prévost #507360), new pulley (Prévost #453078) and washer then fix pulley assembly onto engine using bolt and nut (refer to fig. 2).
7. Torque bolt to  $150 \pm 15$  lbf•ft ( $204 \pm 20$  N•m).
8. Install dust cap (Prévost #453076) onto pulley.
9. Re-apply pressure to air bellows by means of belt tensioner pressure releasing valve.

**Note:** Normal operating pressure is 50 PSI (345 kPa).

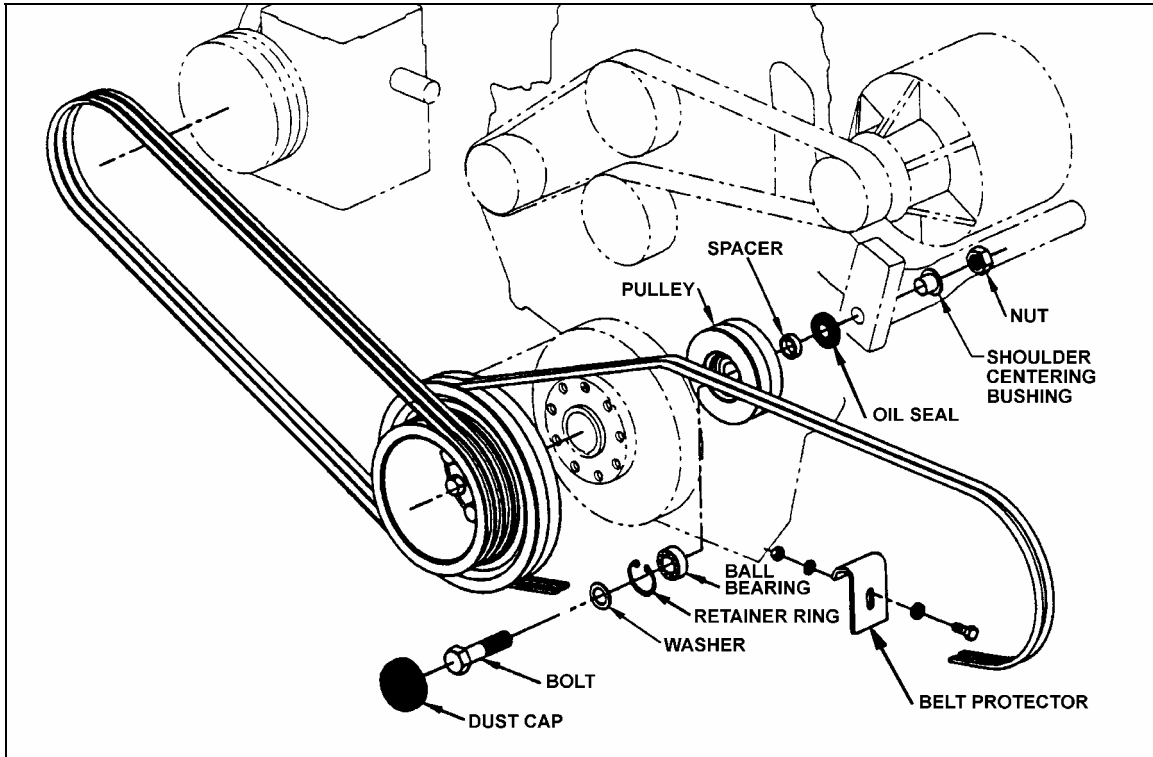


FIGURE 2: A/C COMPRESSOR DRIVE INSTALLATION

## VEHICLES EQUIPPED WITH TWO IDLER PULLEYS

### PROCEDURE

**Warning:** Park vehicle safely, apply parking brake, stop engine and set battery master switch(es) to the OFF position prior to working on the vehicle.

Open engine compartment rear door (s).

Release pressure from air bellows by means of belt tensioning pressure releasing valve. This valve is mounted in engine compartment; near the auxiliary oil tank on H3 series vehicles and above the engine doors on XL series vehicles (refer to fig. 1).

### PART A UPPER PULLEY REPLACEMENT

1. Unscrew bolt securing the upper idler pulley which is used to apply tension on A/C compressor belt, separate parts (refer to fig. 2 and 3).
2. Put bolt, washer located underneath bolt and nut aside.
3. Fill oil seal (Prévost #507360) and pulley (Prévost #453078) with grease.

**Warning:** Use high melting point, water resistant lithium base grease.

4. Install spacer (Prévost #052219), oil seal (Prévost #507360), new pulley (Prévost #453078) and washer then fix pulley assembly onto engine using bolt and nut (refer to fig. 2 and 3).
5. Torque bolt to  $150 \pm 15$  lbf•ft ( $204 \pm 20$  N•m).
6. Install dust cap (Prévost #453076) onto pulley.

### PART B LOWER PULLEY REPLACEMENT

1. Unscrew bolt securing the lower idler pulley which is used to apply tension on A/C compressor belt, separate and keep parts (refer to fig. 3).
2. Install washer, spacer, oil seal (Prévost #507360), pulley assembly (Prévost #052208) and finally washer then fix pulley assembly onto engine using bolt and nut (refer to fig. 3).
3. Torque bolt to 130 lbf•ft (177 N•m).
4. Re-apply pressure to air bellows by means of belt tensioner pressure releasing valve.

**Note:** Normal operating pressure is 50 PSI (345 kPa).

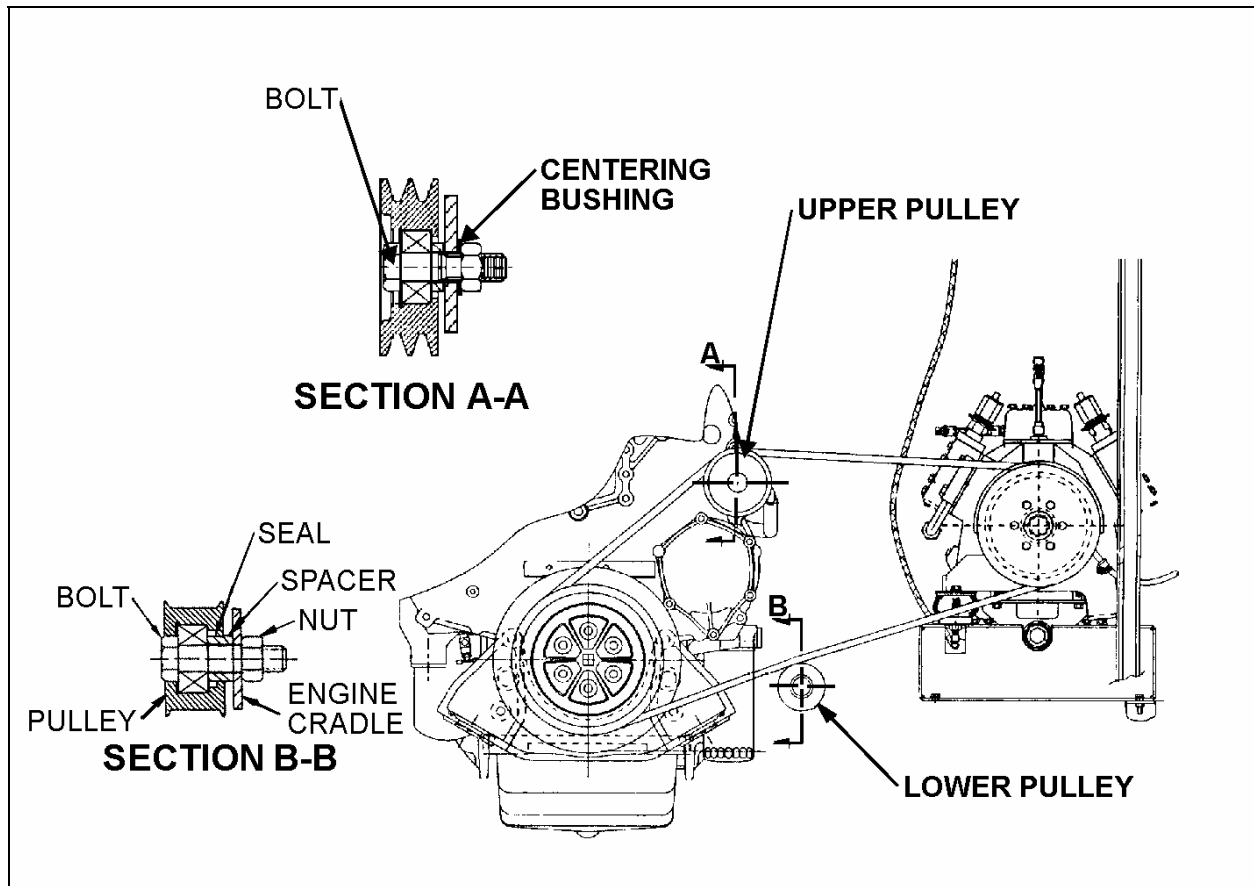


FIGURE 3: A/C COMPRESSOR DRIVE INSTALLATION