



PREVOST

SAFETY RECALL

Sr98-32A



DATE : September 1998	SECTION : 06
SUBJECT : INSPECTION OF STARTER AND BATTERY CABLES	

REVISION : A

VIP-45, XL COACHES AND BUS SHELLS WERE ADDED TO THE APPLICATION LISTS

DESCRIPTION

On the above-mentioned vehicles, wrong installation or incorrect torquing of starter cable fixing nuts may have occurred. Nuts may become loose after a period of time which could cause a short circuit or possibly a fire hazard.

PART A

APPLICATION

Model	VIN
H3-41 and H3-45 Coaches Model Year : 1995 - 1999	<p>From 2P9H33412S<u>1001243</u> up to 2PCH3349XX<u>1012756</u> incl. except</p> <p>2P9H33419S<u>1001269</u> 2P9H3349XS<u>1001272</u> 2PCH33413T<u>1011372</u> 2PCH33411T<u>1011385</u> 2PCH33410T<u>1011393</u> 2PCH33495T<u>1011413</u> 2PCH33419V<u>1011704</u> 2PCH33411V<u>1011728</u> 2PCH33415V<u>1011733</u> 2PCH33412V<u>1011737</u> 2PCH33418V<u>1011743</u> 2PCH33413V<u>1011746</u> 2PCH33416V<u>1011756</u> 2PCH3349XV<u>1011779</u> 2PCH33493V<u>1011901</u> 2PCH33493V<u>1011946</u> 2PCH33412V<u>1012032</u> 2PCH33494W<u>1012086</u> 2PCH33494W<u>1012105</u> 2PCH33494W<u>1012122</u> 2PCH33490W<u>1012215</u> 2PCH33413W<u>1012235</u> 2PCH33497W<u>1012289</u> 2PCH33490W<u>1012330</u> 2PCH33498W<u>1012415</u></p>
XL-40 and XL-45 Coaches and M, M5 and ME Bus Shells Model Year : 1995 - 1999	<p>From 2P9M33496S<u>1001587</u> up to 2PCM3349XX<u>1026722</u> incl.</p>

PROCEDURE

Warning : Park vehicle safely, apply parking brake, stop engine and set battery master switch(es) to the OFF position prior to working on the vehicle.

1. Inspect alternator and battery cables connected to starter terminal # 1 (refer to figure 1).
2. Remove protective coating, loosen cable fixing nuts. Thoroughly clean cables and starter terminals.

Note : Protective coating may or may not be present onto starter terminals.

3. Tighten first nut to 20 lbf?ft (27 N?m) torque.
4. Install alternator cable. Ensure alternator cable is positioned horizontally (3 o'clock). Refer to fig. 1.
5. Add two copper washers or one lock-washer.
6. Install battery cable to a 5 o'clock position, add one lock-washer and tighten to 27 lbf?ft (37 N?m) torque.

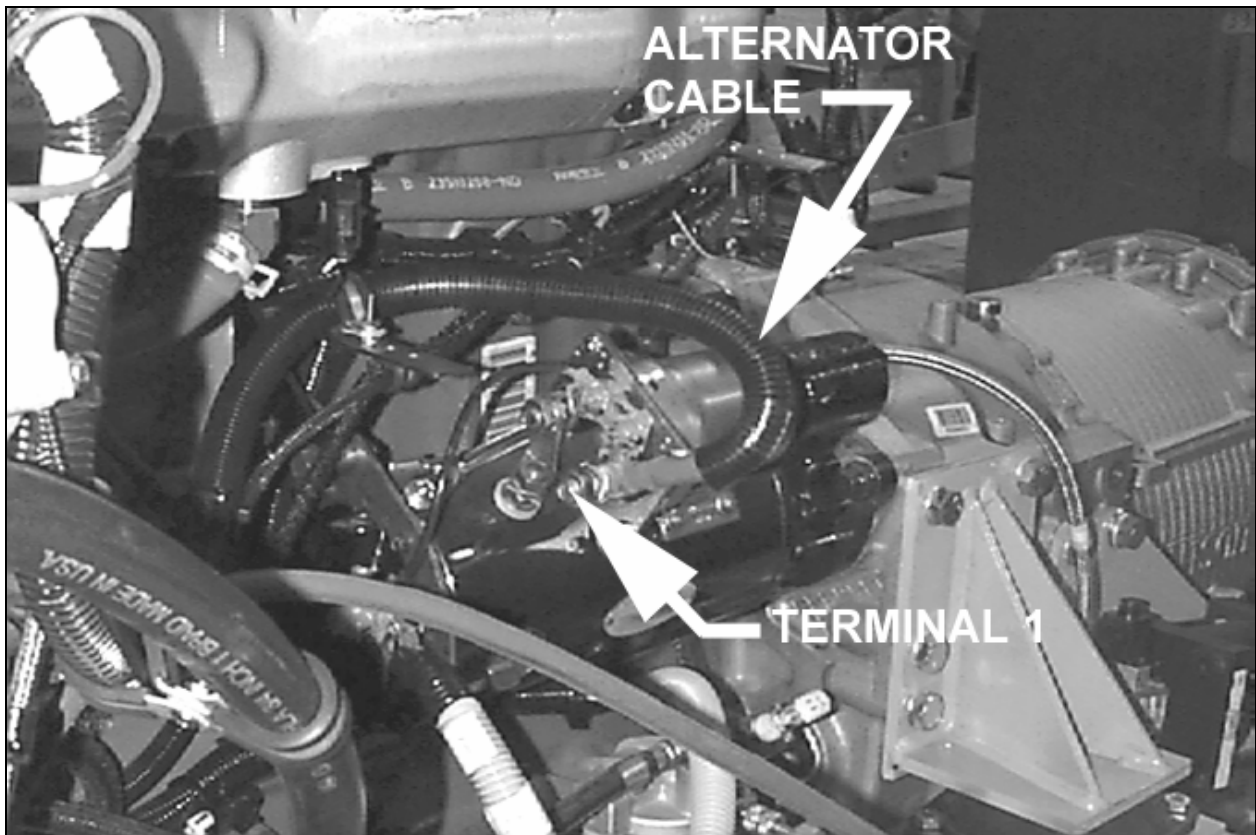



FIGURE 1 : STARTER CABLES

7. Install plastic protector cap.

Note : Ensure nothing was installed onto battery and alternator cables, also that there is a loop in order to absorb vibrations. From engine compartment, pull on battery cable to increase length if needed.

PART B

APPLICATION

Model	VIN 
H3-41 and H3-45 Coaches and VIP-45 Model Year : 1995 - 1999	From 2P9H33412S1001243 up to 2PCH3349XX1012756 incl. except 2P9H33419S1001269 2P9H3349XS1001272 2PCH33413T1011372 2PCH33411T1011385 2PCH33410T1011393 2PCH33495T1011413 2PCH33419V1011704 2PCH33411V1011728 2PCH33415V1011733 2PCH33412V1011737 2PCH33418V1011743 2PCH33413V1011746 2PCH33416V1011756 2PCH3349XV1011779 2PCH33493V1011901 2PCH33493V1011946 2PCH33412V1012032 2PCH33494W1012086 2PCH33494W1012105 2PCH33494W1012122 2PCH33490W1012215 2PCH33413W1012235 2PCH33497W1012289 2PCH33490W1012330 2PCH33498W1012415
XL-40 and XL-45 Coaches and M, M5 and ME Bus Shells Model Year : 1995 - 1999	From 2P9M33496S1001587 up to 2PCM3349XX1026722 incl.

PROCEDURE

Warning : Park vehicle safely, apply parking brake, stop engine and set battery master switch(es) to the OFF position prior to working on the vehicle.

1. Main power compartment battery cables and cables near "Vanner" battery equalizer must also be checked to ensure they are sound. Open main power compartment door (refer to figure 2).

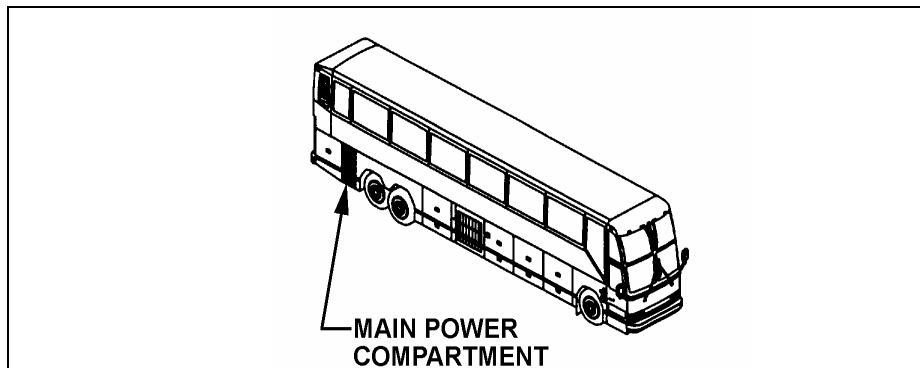


FIGURE 2 : MAIN POWER COMPARTMENT

2. Ensure no cables are rubbing against threaded rod located underneath "Vanner" battery equalizer (refer to figure 3). Secure cables using cable ties if required.

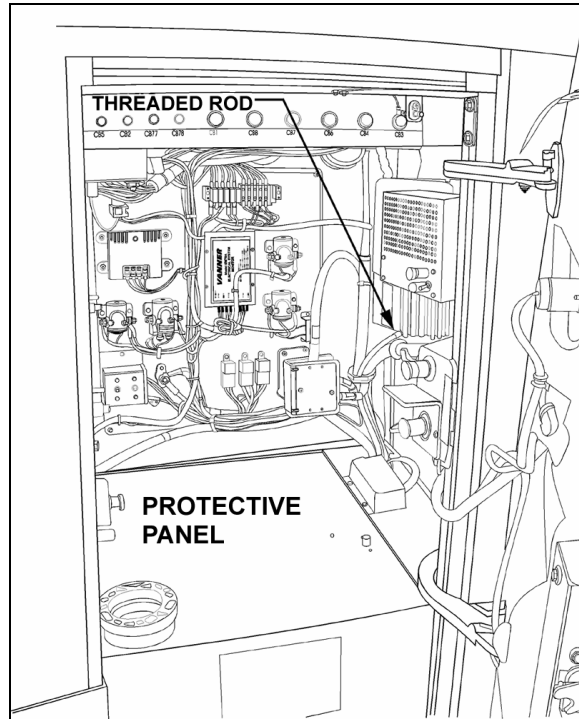


FIGURE 3 : MAIN POWER COMPARTMENT

3. Remove battery protective panel and verify that cables are secure and in good condition, tighten if needed (torque is indicated on battery label) (refer to figures 3 and 4). Also check that holding clamps protective coating is present and in good condition. Reinstall panel and close the door.

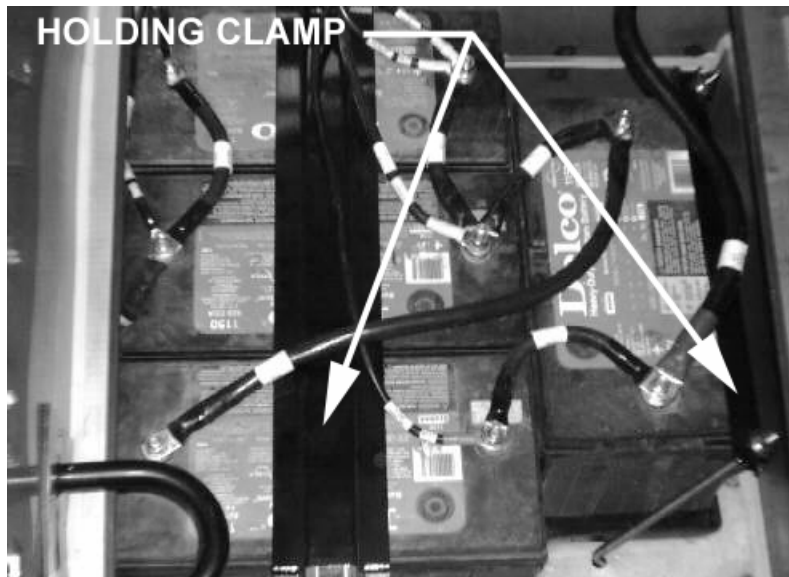


FIGURE 4 : BATTERIES

WARRANTY

This modification is covered by Prévost Car's normal warranty. We will reimburse you half an hour (0.50) of labor upon receipt of a completed A.F.A. form on which you must specify as per "Safety Recall 98-32A". **You also have to fill the "Safety Recall Certification Sheet" provided with this bulletin and return it with your A.F.A. form to be reimbursed.**



PREVOST

**Safety Recall
Certification Sheet
(Ref: Sr 98-32A)**



SERIAL NUMBER: _____

PERFORMED BY		OWNER/OPERATOR	
We hereby certify that Safety Recall Instructions with regards to Safety Recall #98-32A have been performed.			
Name: _____		Name: _____	
Add: _____		Add: _____	
Phone: _____		Phone: _____	
Fax: _____		Fax: _____	
Signature :	_____	Signature :	_____
Date:	_____	Date:	_____

If the information mentioned above is incorrect or you are not the owner of this vehicle anymore, please fill up this section and return to sender..

NEW OWNER: _____

BUSINESS: _____

ADDRESS: _____

TELEPHONE: _____ **FAX:** _____

**Please return this completed document with your
A.F.A. form**