

PREVOST

ENREGISTRÉ - REGISTERED
ISO 9001 & ISO 14001

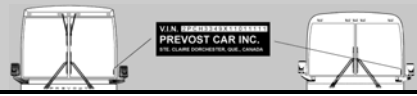
WARRANTY BULLETIN

Wb09-14



DATE : OCTOBER 2009	SECTION :	12 - Brakes
EXPIRATION: OCTOBER 2011		
SUBJECT : MODIFICATION OF THE AIR SUPPLY CIRCUIT FOR THE TP3-DC TRAILER BRAKE CONTROL VALVE		

APPLICATION

Model	VIN	
H3-45 Coaches Model Year : 2009 - 2010	<p>Vehicles</p> <p>2PCH334909C71 1319 2PCH33499AC71 1470</p>	
VIP Motorhomes Model Year : 2007 - 2009	<p>Vehicles</p> <p>2PCV334977C71 0944 2PCV334988C71 1148 2PCV334907C71 0963 2PCV334998C71 1157 2PCV3349X7C71 0968 2PCV334978C71 1206 2PCV334907C71 0977 2PCV334968C71 1214 2PCV334987C71 0998 2PCV334928C71 1226 2PCV334997C71 1013 2PCV334918C71 1234 2PCV334928C71 1050 2PCV334948C71 1244 2PCV334998C71 1062 2PCV334928C71 1274 2PCV334998C71 1076 2PCV334988C71 1280 2PCV334908C71 1080 2PCV334938C71 1302 2PCV334988C71 1098 2PCV334948C71 1308 2PCV334948C71 1115 2PCV3349X8C71 1314 2PCV334908C71 1130 2PCV334969C71 1411 2PCV334988C71 1134 2PCV334959C71 1481 2PCV334978C71 1139</p>	

X3-45 Coaches Model Year : 2008 - 2009	Vehicles 2PCG33493 8C729405 2PCG33496 9C729660 2PCG33495 9C729648
XLII Motorhomes & ENTERTAINER XLII Model Year : 2008 - 2009	Vehicles 2PCY33498 8C729386 2PCY33496 9C729596 2PCY33491 8C729388 2PCY33496 9C729629 2PCY33496 8C729497 2PCW33490 8C729535 2PCY33492 8C729500 2PCW33492 9C729571 2PCY33499 8C729509


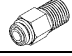
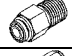

DESCRIPTION

On the vehicles affected by this bulletin (trailer hitch with trailer air brakes connections), it is necessary to change the air supply circuit of the valve responsible for trailer service brake application. According to the existing circuit, if the vehicle service brakes are applied by the ATC system (Automatic Traction Control), trailer brakes application will also occur, which is not wanted. For this reason, it is important to proceed to the following instruction to ease starting of the vehicle when the ATC system intervenes.

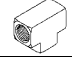
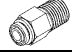

Consult or download a PDF version of this bulletin on Prevest Web site at the following address:
<http://prevostparts.volvo.com/technicalpublications/en/pub.asp>

MATERIAL

H3-45 & VIP series vehicles

Part No.	Description		Qty
501319	COUPLING, 3/8NPT-Fx3/8NPT-F, BRASS		1
641330	MALE CONNECTOR / PUSH-IN FITTING / #6x3/8NPT-M BR		1
641331	MALE CONNECTOR / PUSH-IN FITTING / #6x1/4NPT-M BR		1
642145	MALE BRANCH TEE SWIVEL, 1/2 O.D. TUBE X 1/2 O.D. TUBE X 3/8 NPT MALE		1

X3-45 & XLII series vehicles

Part No.	Description		Qty
501527	FEMALE UNION TEE 3/8NPT-F x 3/8NPT-F x 3/8NPT-F BR		1
641381	MALE CONNECTOR / PUSH-IN FITTING / #8x3/8NPT-M BR		2
641375	MALE ELBOW 90° NON-SWIVEL / PUSH-IN FITTING / #6x3/8NPT-M BR		1

NOTE

Material can be obtained through regular channels.

PROCEDURE



DANGER

Park vehicle safely, apply parking brake, stop engine and set battery master switch(es) to the OFF position prior to working on the vehicle.

H3-45 & VIP Series vehicles

1. Preassemble parts #642145, #501319 and #641330. Apply an appropriate thread sealing product like Loctite 567 Thread Sealant (Prevost #680098).
2. Perform step 1 up to 6 of figure 1. Use figure 2, 3, 4 and 5 to help you identify TP-3DC and R-14 valves.

NOTE

TP-3DC valve is fixed on a transversal angle, on the right hand side of the vehicle's longitudinal axis.

Tag axle R-14 valve is located on the right hand side of the vehicle, next to the primary air tank.

3. Appropriately secure the air lines using nylon ties.



CAUTION

DO NOT use the vehicle before having preformed a brake test.

4. Test the brakes.

SERVICE BRAKES TEST

Check for correct pressure build-up. Stop engine and check pressure gauge. Pressure loss should not exceed 3 psi/min. (21 kPa/min.) with engine stopped and without brake pedal applied. Air loss should not exceed 7 psi/min. (48 kPa/min.) with engine stopped and brake pedal fully applied.

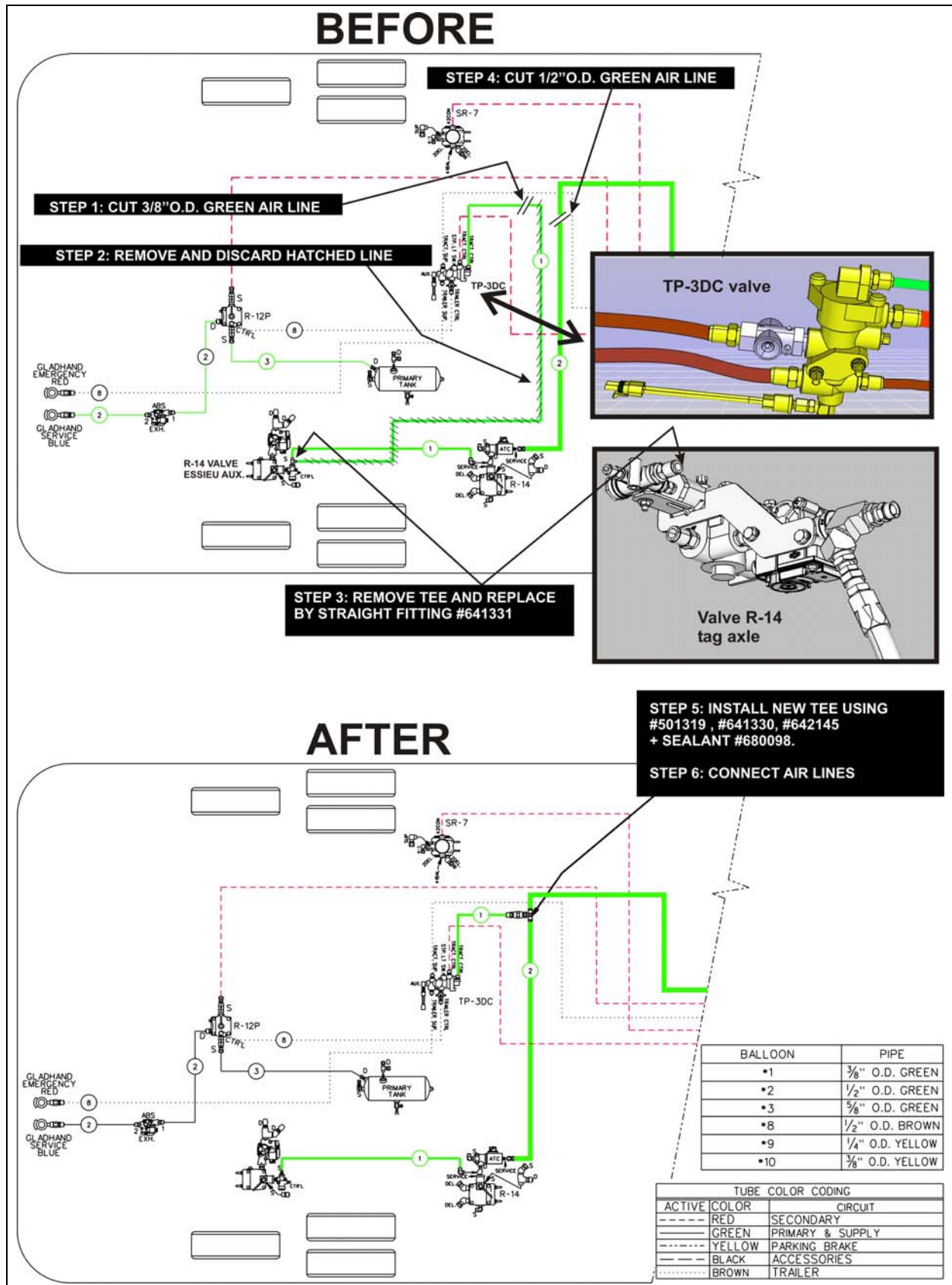


FIGURE 1



FIGURE 2 : TP-3DC VALVE



FIGURE 3 : TP-3DC VALVE



FIGURE 4 : TAG AXLE R-14 VALVE



FIGURE 5 : TAG AXLE R-14 VALVE

X3 & XLII Series vehicles

1. Preassemble parts #501527, #641381 and #641375. Apply an appropriate thread sealing product like Loctite 567 Thread Sealant (Prevost #680098).
2. Perform step 1 up to 5 of figure 6.
3. Appropriately secure the air lines using nylon ties.



CAUTION

DO NOT use the vehicle before having preformed a brake test.

4. Test the brakes.

SERVICE BRAKES TEST

Check for correct pressure build-up. Stop engine and check pressure gauge. Pressure loss should not exceed 3 psi/min. (21 kPa/min.) with engine stopped and without brake pedal applied. Air loss should not exceed 7 psi/min. (48 kPa/min.) with engine stopped and brake pedal fully applied.

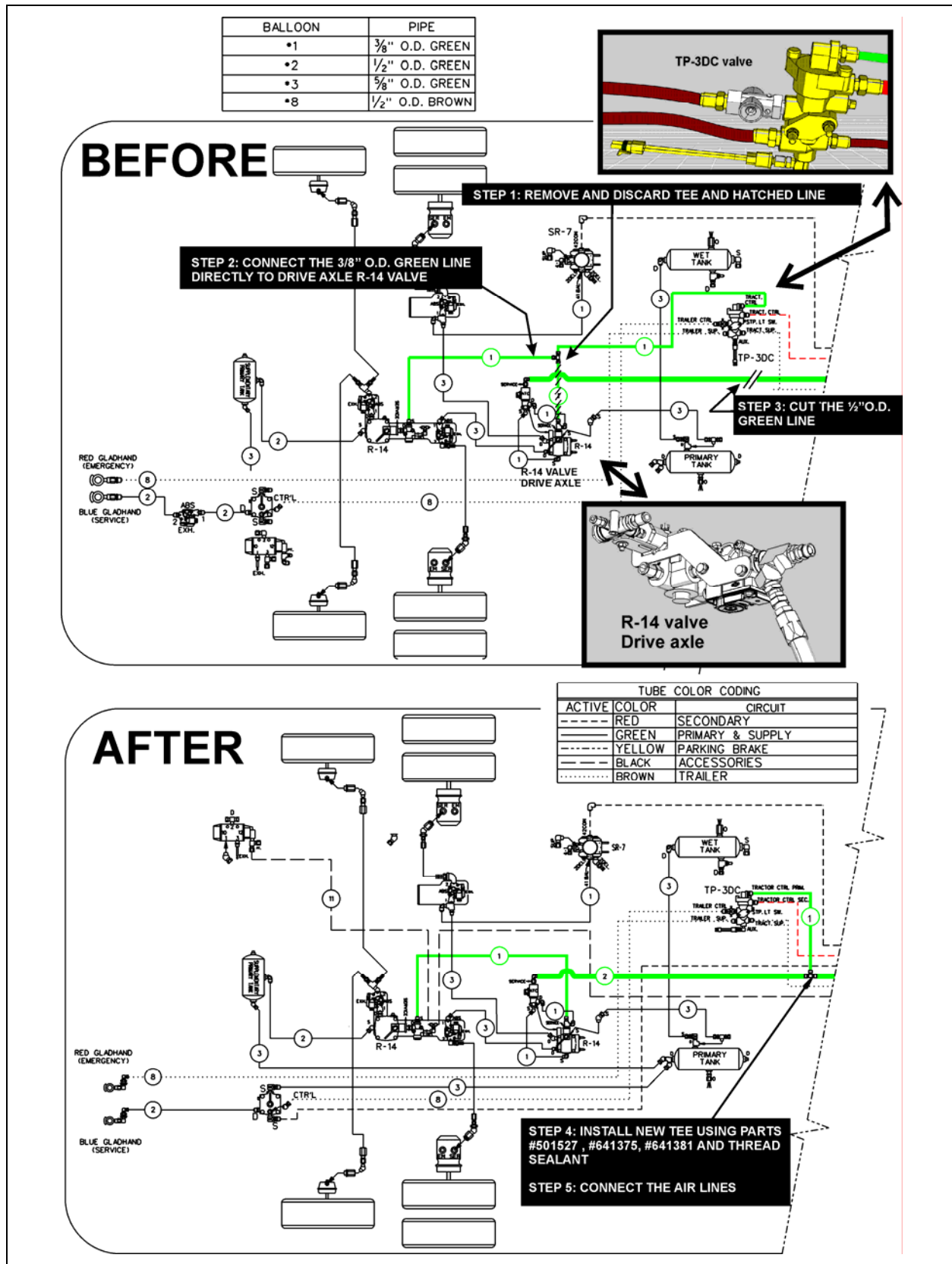


FIGURE 6

WARRANTY

This modification is covered by Prevost's normal warranty. We will reimburse you the parts and 1 hour (1.0) of labor upon receipt of a completed A.F.A. form on which you must specify as per "Warranty Bulletin 09-14".

Parts / Waste disposal:

Discard waste according to applicable environmental regulations (Municipal/State[Prov.]/ Federal)