


PREVOST

Warranty Bulletin

96-10

Date: **May 1996**
 Section: **06**
 Subject: **WHEEL CHAIR LIFT ALARM AND PARKING BRAKE LIGHT**

Application:

Model	VIN	
H3-41 Coach Model Year: 1995 - 1996	2P9H33414S1001275 2PCH33416T1011382	2PCH33414T1011378
H3-45 Coach Model Year: 1995 - 1996	2P9H33495S1001128 2P9H3349XS1001139 2P9H33498S1001155 2P9H33498S1001186 2PCH33495T1011427 2PCH33498T1011440 2PCH33497T1011476 2PCH3349XT1011486 2PCH33496T1011503	2P9H33494S1001136 2P9H3349XS1001142 2P9H33497S1001180 2PCH33498T1011423 2PCH33494T1011435 2PCH33492T1011451 2PCH33492T1011482 2PCH33494T1011497

DESCRIPTION

Prevost car's engineering department has made two modifications to the electrical system for vehicles mentioned above. The first goal is to make the wheel-chair alarm active when the door is open and the coach is moving. The second goal is to increase the intensity of the parking brake light by avoiding return of current in fast idle switch. Prevost car recommends that you do this modification by performing the following procedure.

MATERIAL

Part No.	Description	Qty
560931	Diode	3
561181	Terminal	2
562499	Shrink tubing	0,5

Note: Material can be obtained through regular channels.

PROCEDURE

Warning: Park vehicle safely, apply parking brake, stop engine and set battery master switch(es) to the OFF position prior to working on the vehicle.

Step A (Wheel chair lift alarm)

1. Open front service compartment door.
2. Locate alarm junction box.
3. Extract wires #300B and #27 from AA2 relay connector (Fig.1).

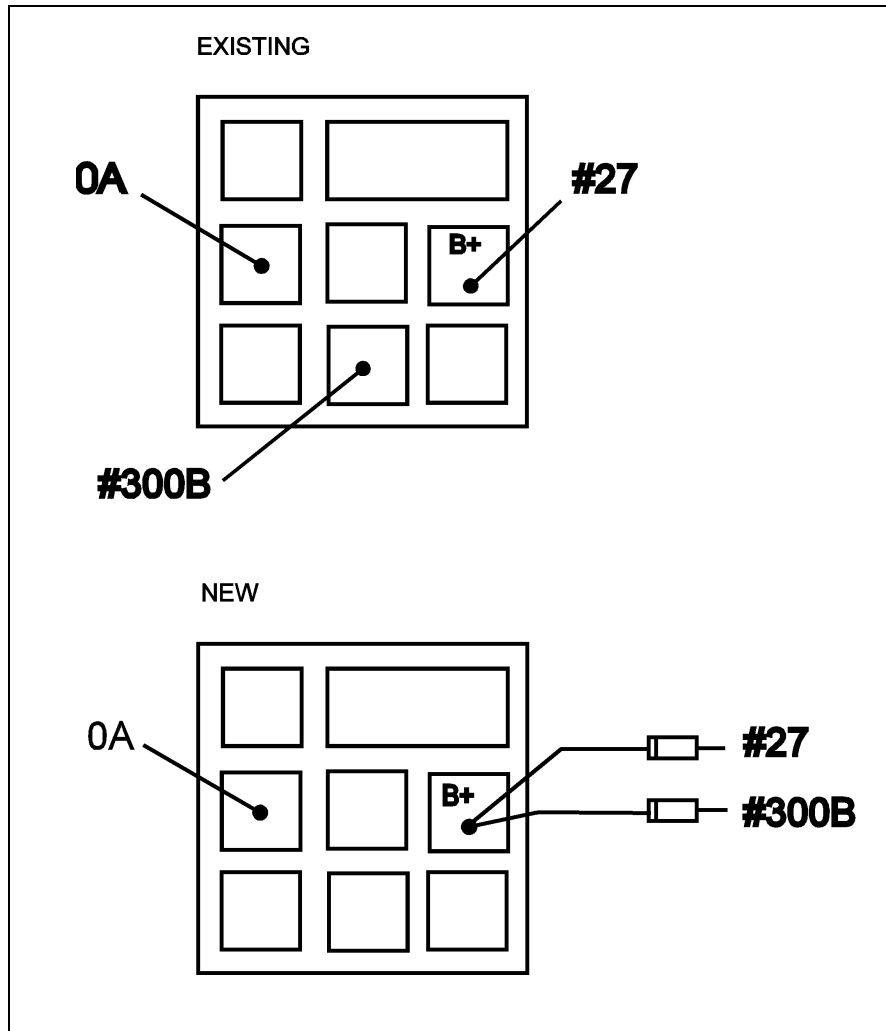


FIGURE 1: VUE FROM UNDERNEATH OF RELAY CONNECTOR AA2

06181

4. Cut terminals and solder two diodes (Prévost #560931) in series on each wire (Fig. 1).

Warning: Make sure diodes are installed properly, see figure 1.

5. Install shrink tubing (Prévost #562499) on diodes.
6. Connect both diodes in one terminal (Prévost #560931).
7. Connect terminal in port B+ of AA2 relay connector (Fig.1).

Step B (Parking brake light)

1. Open front electric compartment door.
2. Locate front junction box and open door (Fig. 2).

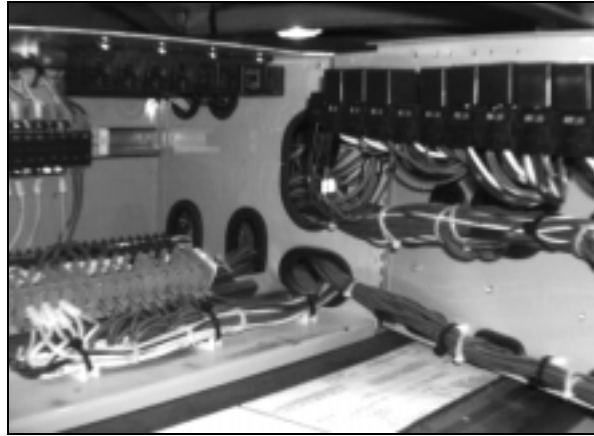


FIGURE 2: IN JUNCTION BOX

06182

3. Extract wire #231 from R7 relay connector (Fig. 3).

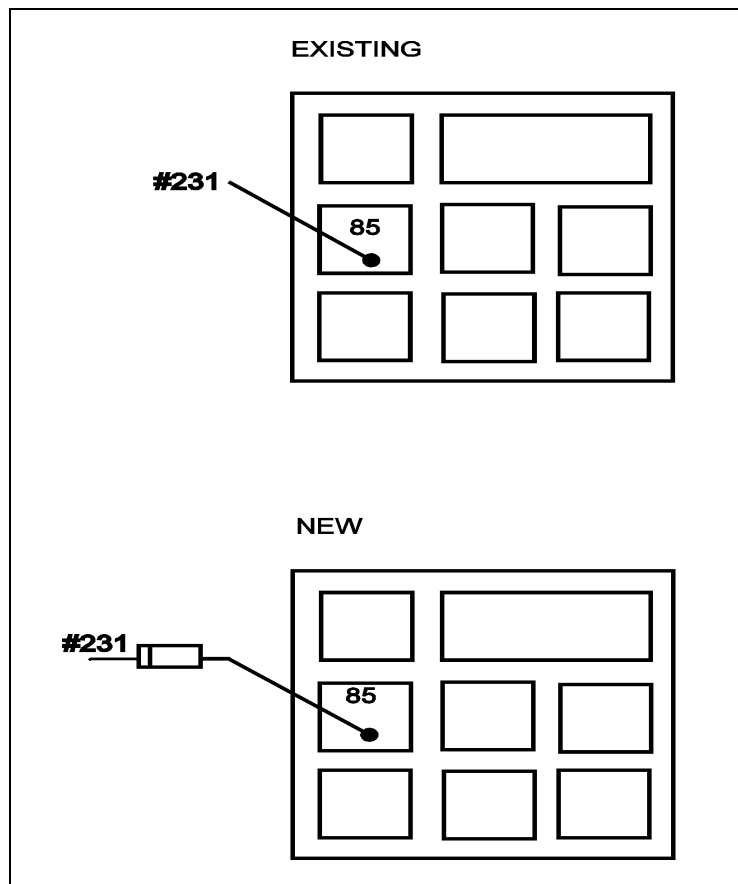


FIGURE 3: VUE FROM UNDERNEATH OF RELAY CONNECTOR R7

06183

4. Cut terminal of wire #231 and solder diode (Prévost #560931) in series (Fig. 3).

Warning: *Make sure diode is installed properly, see figure 3.*

5. Install shrink tubing (Prévost #562499) and new terminal (Prévost#561181) on diode.

6. Connect new terminal in port 85 of R7 relay connector (fig. 3).

WARRANTY

This modification is covered by the manufacturer's normal warranty. We will reimburse you the parts and half hour (0.5) of labor upon receipt a completed A.F.A. form on which you must specify as per "Warranty Bulletin 96-10". **Discard all removed and unused parts.**

Expiration date: May 1997