

PREVOST

Instruction Sheet

IS-16078

DRAIN HOLES POSITION IN WEILER SLIDE-OUT BASE SEAL

First release :

04-26-2019

MATERIAL

Order one of the following kits:

Part No.	Description	Qty
479737	Seal Kit VIP 45	1
479738	Seal Kit VIP 45	1
479739	Seal Kit VIP 45	1
479740	Seal Kit VIP 45	1
479742	Seal Kit VIP 45	1

Other parts that may be required:

Part No.	Description	Qty
N/A	Hollow Punch – 1/2" (13mm)	1

NOTE

Material can be obtained through regular channels.

PROCEDURE



DANGER

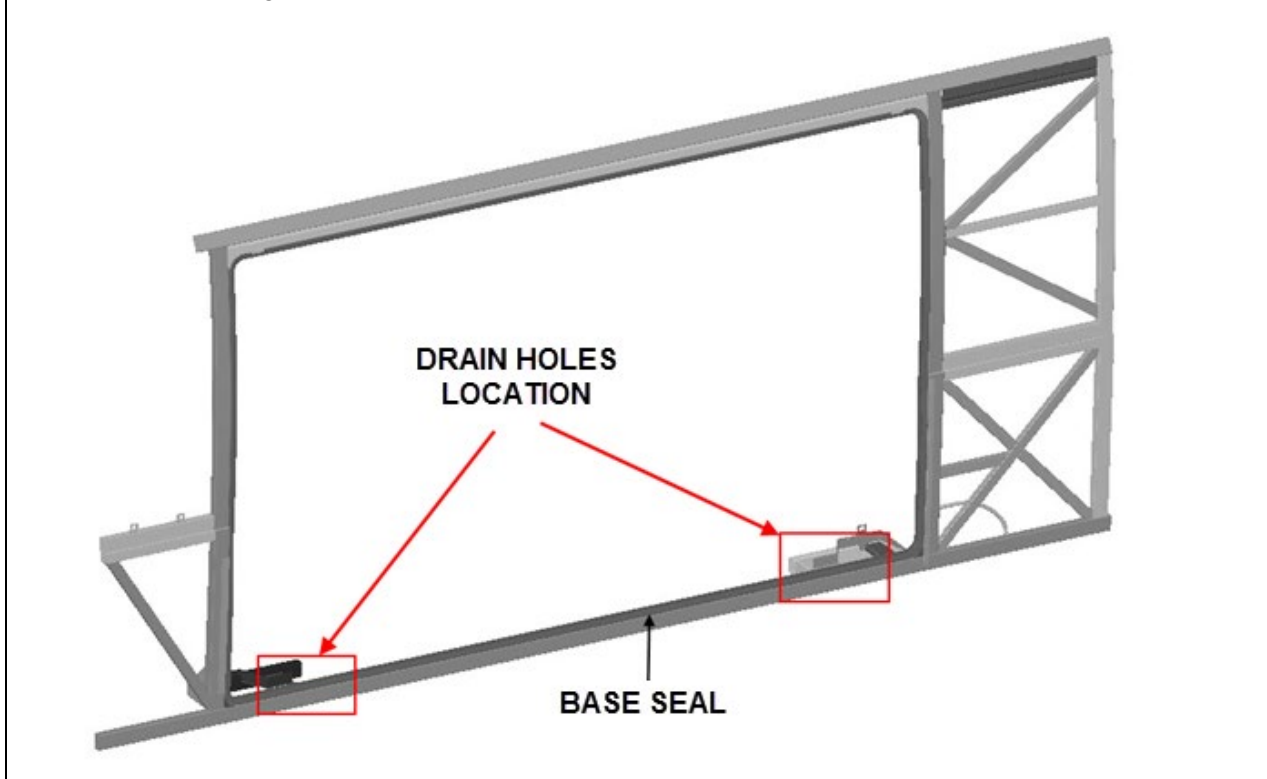
Park vehicle safely, apply parking brake, stop engine. Prior to working on the vehicle, set the ignition switch to the OFF position and trip the main circuit breakers equipped with a trip button.

Lock out & Tag out (LOTO) must be performed during set-up, maintenance or repair activities. Refer to your local procedure for detailed information regarding the control of hazardous energy.

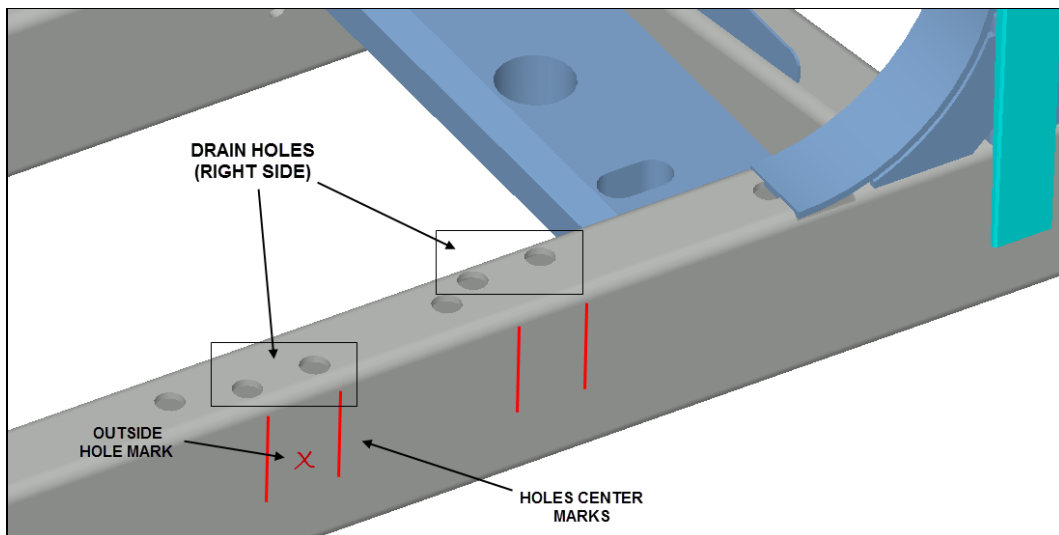
NOTE

When replacing slide-out seals on Prevost motorhomes and converted vehicles, the drain holes of the base seal must be checked for proper alignment with the slide-out frame drain holes.

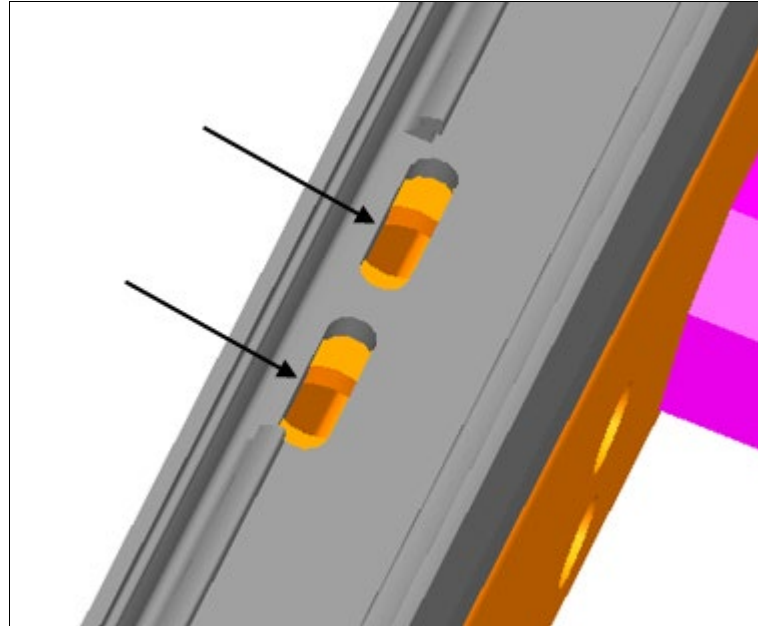
If the holes are not correctly positioned, it is important to reposition (re-drill the base seal holes) these holes before installing the inflatable seal inside the base seals.



1. Before the installation of the base seal mark the holes location on the vehicle slide-out frame.
 - Mark the center of the drain holes locations on the frame. There are four holes on each extremity (lower left and right) of the frame as identified on the picture below. Also mark on which side (in or out) of the frame the holes are located.



2. Install the base seal following current Prevest procedures (see [MI19-27](#)).
3. Once installed, validate the seal drain holes (elongated) and slide-out frame drain holes (round) alignment. The base seal holes must uncover the chassis drain holes on all their length.

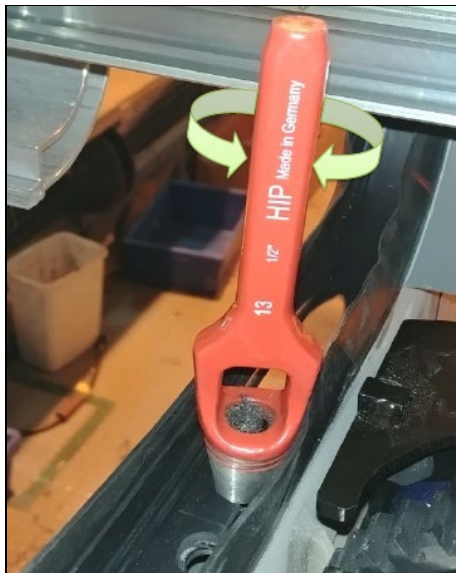


4. If the holes are misaligned, use a 1/2in (13mm) hollow punch to puncture the seal & relieve the drain holes. *Apply hand pressure and twist from left to right to cut through the seal.*



WARNING

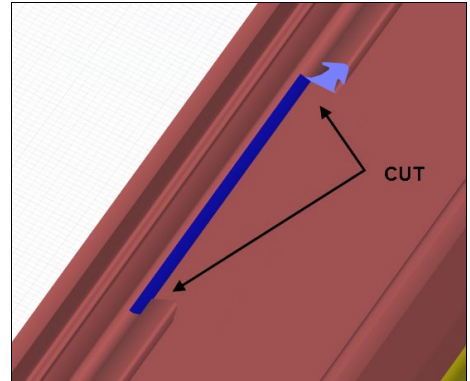
Do not hit the punch with a hammer to cut through the seal. Using this method could rupture or damage the seal.



NOTE

In case of important misalignment, it may be necessary to cut a part of the seal inner lip before punching the hole(s).

Use a sharp blade or knife (X-Acto style) & cut just enough clear the drain holes.



PARTS / WASTE DISPOSAL

Discard waste according to applicable environmental regulations (Municipal/State[Prov.]/ Federal)