



MAINTENANCE INFORMATION

MI24-83

DATE :	April 2024	SECTION :	18 BODY
SUBJECT :	PASSENGER STEP MOVING		

First Release

04-16-2024

IMPORTANT NOTICE

This modification is recommended by Prevost to increase your vehicle's performance. Note that no reimbursement will be awarded for carrying out this modification.

APPLICATION

Model
Volvo 9700 From Model Year : 2009 - XXXX

DESCRIPTION

This procedure eliminates the step moving.

MATERIAL

Order the following part:

Part No.	Description	Qty
969476	SIX POINT SOCKET SCREW	4

Other parts that may be required:

Part No.	Description	Qty
23184960	ADHESIVE SIKAFLEX 268 / SAUCAGE 600ML	1
682176	SEALANT SIKA #221 / BLACK / 310ml CARTRIDGE	1

NOTE

Material can be obtained through regular channels.

SAFETY PRECAUTIONS

- Eye protection should always be worn when working in a shop.
- Rules for Personal Protection Equipment should always be respected. Wear your PPE including but not limited to the following:



Safety First!



PROCEDURE



DANGER

Park vehicle safely, apply parking brake, stop the engine. In the battery box, set the battery cut-off switch to the OFF position prior to working on the vehicle.

Lockout & Tag out (LOTO) must be performed during set-up, maintenance or repair activities. Refer to your local procedure for detailed information regarding the control of hazardous energy.

1. Remove the first and third lamps step.

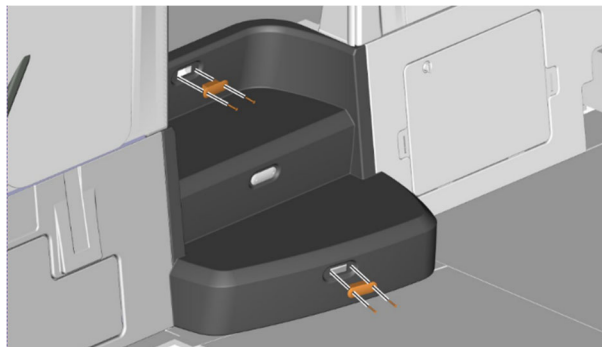


Figure 1

2. Remove the six-point socket screws from the stairs.

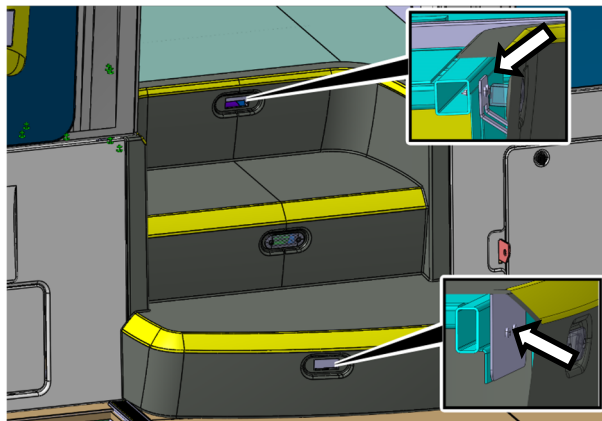


Figure 2

3. Remove the middle lamp step.

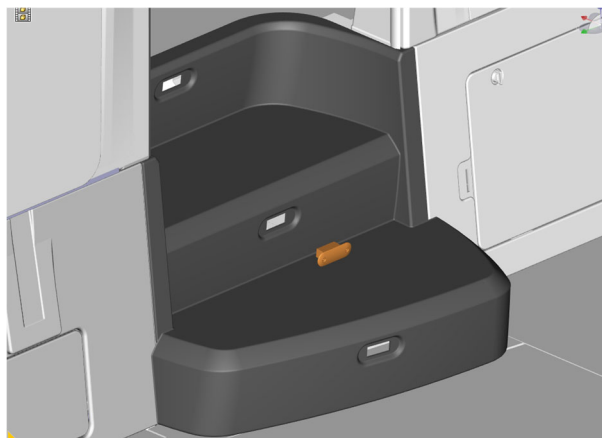


Figure 3

4. Cut the sealant at the top and bottom of the stairs.

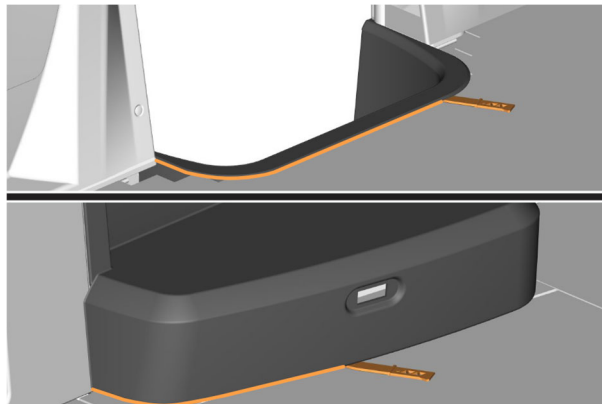


Figure 4

5. Remove the stairs and clean the sealant remains.



Figure 5

6. Remove the excess of sealant on the floor.

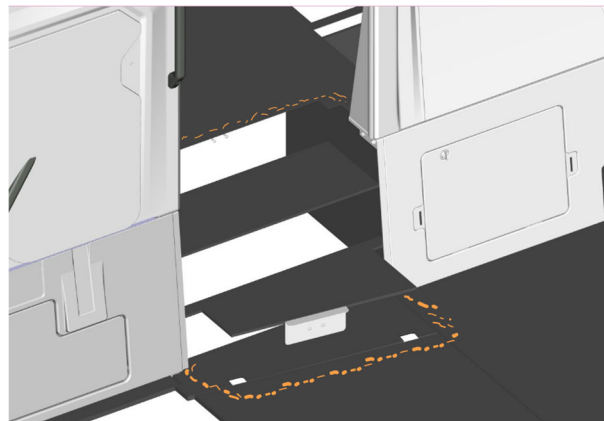


Figure 6

7. Apply adhesive 23184960 on the area where the stairs will be installed.



Figure 7

8. Apply sealant 682176 on the stairs edge.



Figure 8

9. Place the front partition wall stairs in its position.

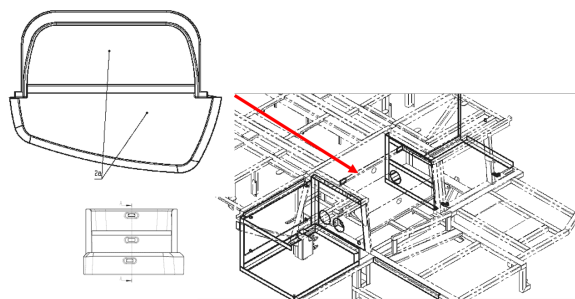


Figure 9

10. Press the stairs until they sit properly.

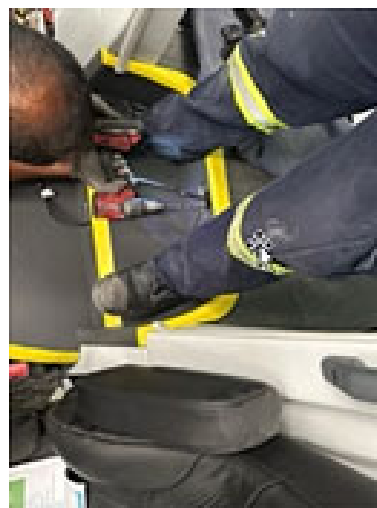


Figure 10

11. Fix the upper bracket making two holes and holding it with two six-point socket screw 969476 (2x).

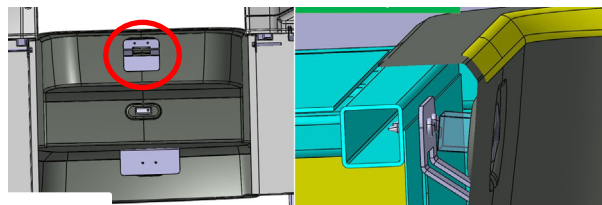


Figure 11

12. Fix the lower bracket making two holes and holding it with two six-point socket screw 969476 (2x).

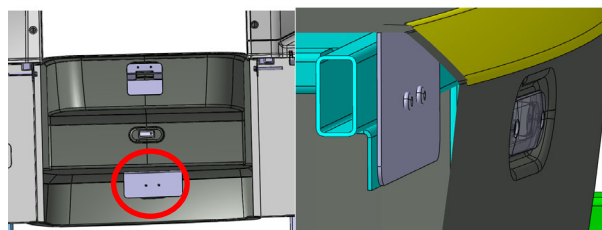


Figure 12

13. Stairs and front partition wall cover must be flush.

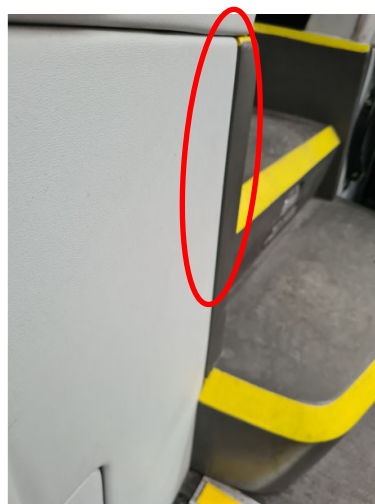


Figure 13

14. Reinstall the lamp steps.



Figure 14

PARTS / WASTE DISPOSAL

Discard according to applicable environmental regulations (Municipal/State[Prov.]/ Federal)