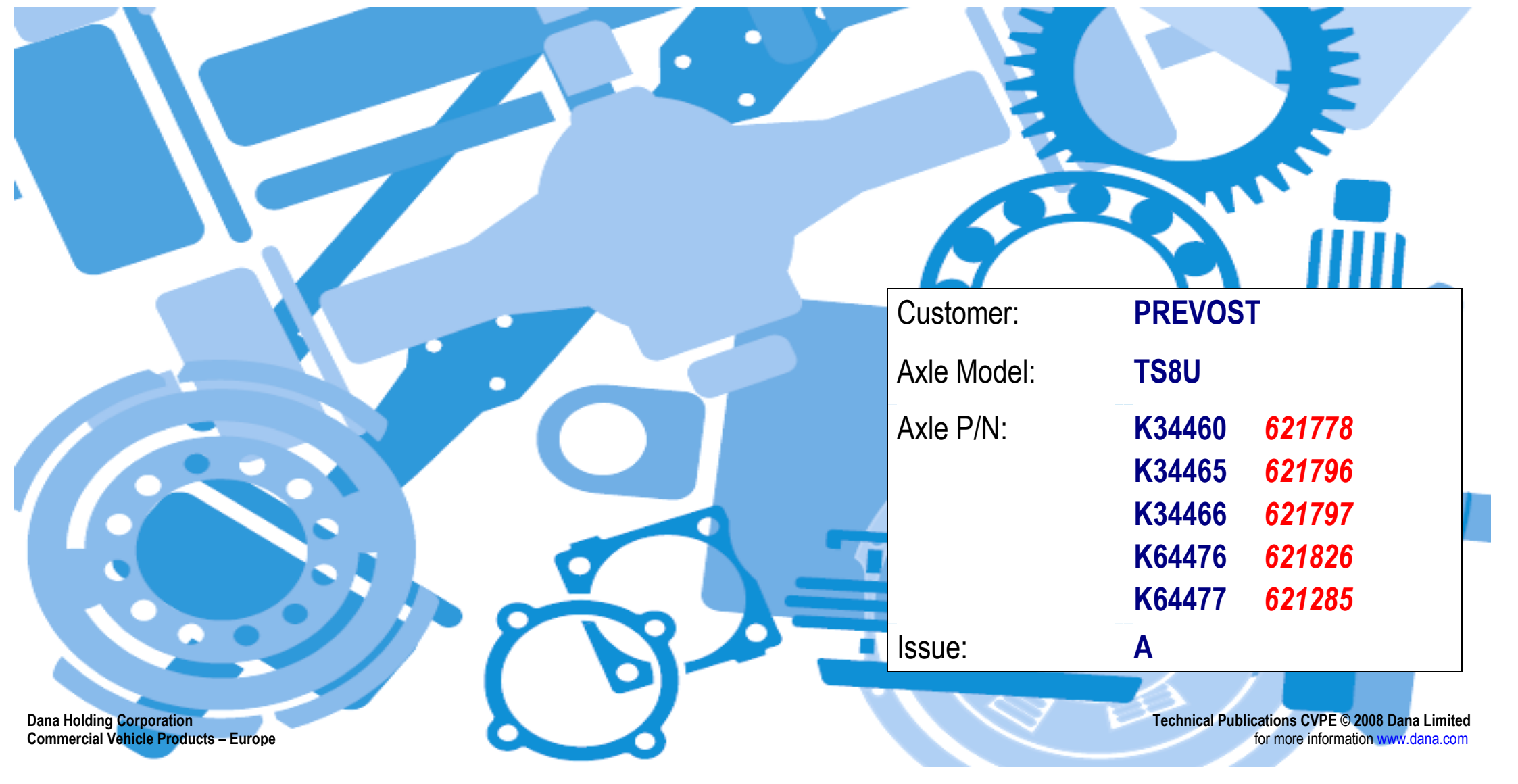




## IPL-0153

## ILLUSTRATED PART LIST

A large, stylized blue illustration of various mechanical components, including gears, bearings, and shafts, serves as the background for the page.

Customer:	<b>PREVOST</b>
Axle Model:	<b>TS8U</b>
Axle P/N:	<b>K34460</b> <b>621778</b>
	<b>K34465</b> <b>621796</b>
	<b>K34466</b> <b>621797</b>
	<b>K64476</b> <b>621826</b>
	<b>K64477</b> <b>621285</b>
Issue:	<b>A</b>

The description, testing procedures, and specifications contained in this parts / service publication were current at time of writing. This manual will not be updated. If in doubt about any aspect of maintenance or servicing of the axle please contact the vehicle builder or our service department directly.

**SPICER**<sup>®</sup> products are subject to continuous development and we reserve the right to modify procedures and to make changes in specifications at any time without prior notice and without incurring in any obligation.

The recommendations of the vehicle manufacturer should be considered as the primary source of service information regarding this **SPICER**<sup>®</sup> product. This manual is intended to be used as a supplement to such information.

Any references to brand names in this publication are made simply as an example of the types of tools and materials recommended for use and, as such, should not be considered as an endorsement.

This manual is the property of **Commercial Vehicle Products – Europe**, a division of **Dana Holding Corporation**, and may not be copied or disseminated without prior agreement of **Commercial Vehicle Products– Europe**, a division of **Dana Holding Corporation**.

**Commercial Vehicle Products – Europe**, a division of **Dana Holding Corporation**, recommends following all manufacturers recommendations for the proper handling and disposal of lubricants and solvents. For further information please contact the lubricants and solvents supplier.

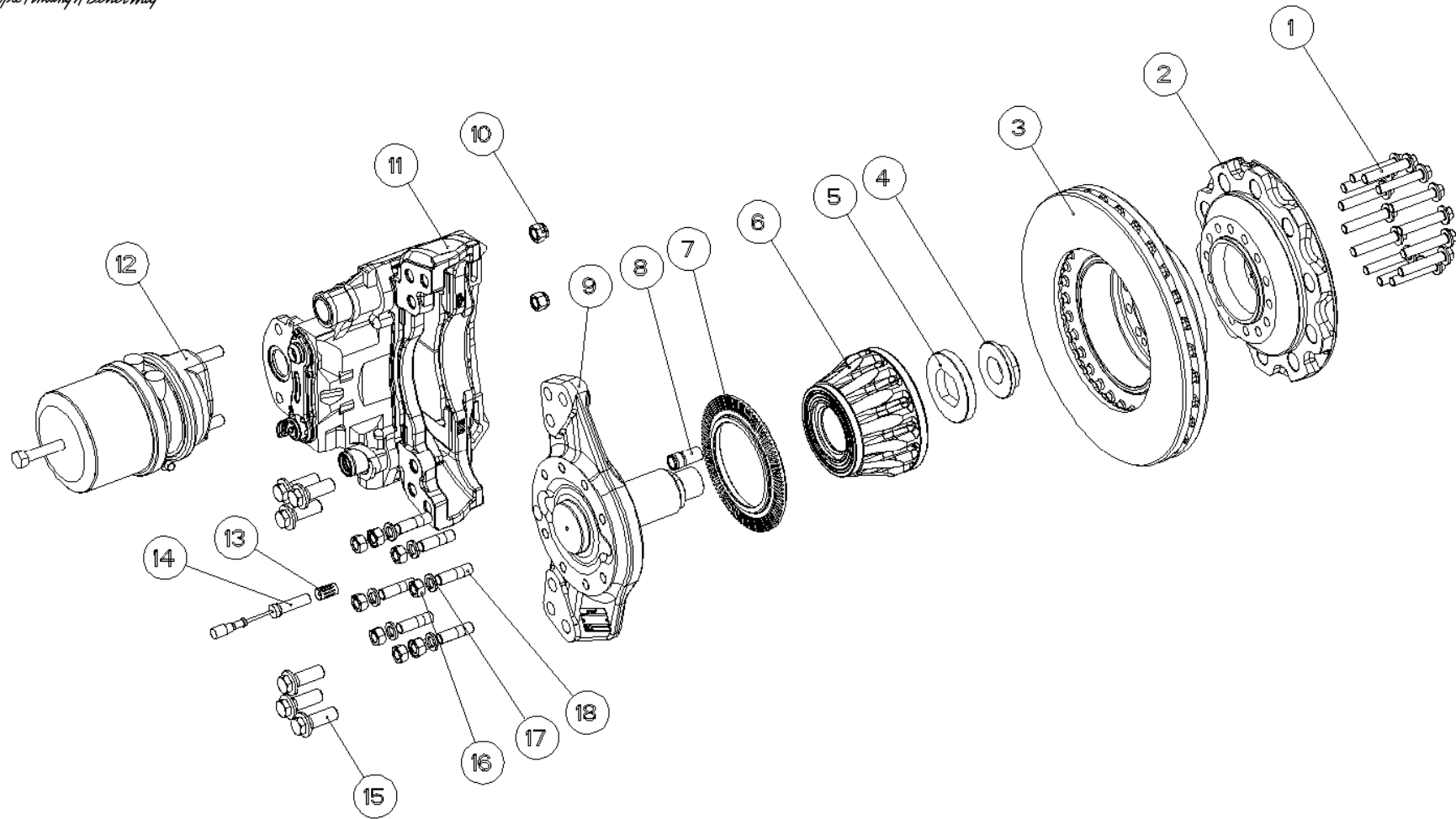
EVERY EFFORT HAS BEEN MADE TO ENSURE THE ACCURACY OF THE INFORMATION CONTAINED WITHIN THIS MANUAL.

**HOWEVER, COMMERCIAL VEHICLE PRODUCTS – EUROPE, A DIVISION OF DANA HOLDING CORPORATION, MAKES NO EXPRESSED OR IMPLIED WARRANTY OR REPRESENTATION BASED ON THE ENCLOSED INFORMATION.**

Last Modification	Date	Approved by	Date	Issue	Eng. Change
C.G.	30/03/10	E.M.	30/03/10	A	NC10460



*People Finding A Better Way*



Dana Holding Corporation  
Commercial Vehicle Products – Europe

Technical Publications CVPE © 2008 Dana Limited  
for more information [www.dana.com](http://www.dana.com)

## MODEL AXLE REFERENCES Part List

Item	Part Number					Description	Qty <sup>0</sup>
	K34460	K34465	K34466	K34476	K34477		
1	F5064/55	F5064/55	F5064/55	F5064/55	F5064/55	Flanged bolt (M14 X 1.5)	28
2	F4974/28	F4974/28	F4974/28	F4974/28	F4974/28	Wheel hub	2
3	F4974/88	F4974/88	F4974/88	F4974/88	F4974/88	Brake Disc	2
4	F4567/77	F4567/77	F4567/77	F4567/77	F4567/77	Hub Bearing – Nut	2
5	F4567/30	F4567/30	F4567/30	F4567/30	F4567/30	Hub Bearing – Collet washer	2
6	SL279/3	SL279/3	SL279/3	SL279/3	SL279/3	Hub Bearing – Unitized <sup>1</sup>	2
7	N/A	N/A	F5084/100	N/A	F5084/100	Pole Wheel (100T) <sup>1</sup>	2
8	603289	603289	603289	603289	603289	ABS sensor – Bush <sup>2</sup>	2
9	R2363/238	R2363/238	R2363/238	R2363/238	R2363/238	Knuckle <sup>2</sup>	2
10	MX-1-1601	MX-1-1601	MX-1-1601	MX-1-1601	MX-1-1601	Nut – Self Lock (M16 x 1,5)	4
11	SM486/52K	SM486/52K	SM486/52K	SM486/58K	SM486/58K	Brake Caliper LH	1
11	SM486/51K	SM486/51K	SM486/51K	SM486/57K	SM486/57K	Brake Caliper RH	1
12	SM487/85K	SM487/88K	SM487/101K	SM487/88K	SM487/101K	Actuator LH & RH	2
13	N/A	N/A	N/A	N/A	N/A	ABS Clamping Sleeve	2
14	N/A	N/A	N/A	N/A	N/A	ABS sensor	2
15	833175	833175	833175	833175	833175	Brake fixing – Bolt (M20 x 1.5)	12
16	ML5016/X	ML5016/X	ML5016/X	ML5016/X	ML5016/X	Nut M16	16
17	ML5716/1	ML5716/1	ML5716/1	ML5716/1	ML5716/1	Washer Spring M16	16
18	SB6416/42V	SB6416/42V	SB6416/42V	SB6416/42V	SB6416/42V	Stud (M16 x 58)	16

### NOTES:

- <sup>0</sup> Quantities listed are for complete axle unit -  
<sup>1</sup> Available as a Service Kit: K26857/1  
<sup>2</sup> Available as a Service Kit: SR2363/238

### ADDITIONAL INFORMATION (AI):

- AI1 Service Manual NDS **613513**  
 AI2 Lubrication Manual **613511**  
 AI3 Service Manual Disc Brake SN6.../SN7.../SK7.../NA7... **613512**  
 AI4 Service Manual Disc Brake PAN17, PAN19-1 PLUS, PAN22-1 **N/A**

## MODEL AXLE REFERENCES Tightening Torques

Item	Part Number	Description	Type	Remarks	Torque (N·m)	Torque (ft·lbs)
1	F5064/55	Flanged bolt (M14 X 1.5)	M14 x 1.5		236 - 260	174 - 192
4	F4567/77	Hub Bearing – Nut	1- 3/4" UN		780 - 849	575 - 626
10	MX-1-1601	Nut – Self Lock (M16 x 1.5)	M16 x 1.5		180 - 210	133 - 155
15	833175	Brake fixing - Fit bolt (M20 x 1.5)	M20 x 1.5		475 - 533	350 - 393



**Dana Holding Corporation**

Commercial Vehicle Products – Europe

Dana Automoción S.A.

Polígono Industrial de Landaben, Calle E

31012 Pamplona / Spain

TEL (+34-948) 289 100 FAX (+34-948) 188 164

**APPLICATION POLICY**

Capability ratings, features and specifications vary depending upon the model type of service. Applications approvals must be obtained from Commercial Vehicle Products - Europe. We reserve the right to change or modify our product specifications, configurations, or dimensions at any time without notice.

*People Finding A Better Way<sup>®</sup>*