



Customer:	PREVOST
Axle Model:	S84U
Axle P/N:	K26929
Issue:	A

611351 FL June 03 2013

The description, testing procedures, and specifications contained in this parts / service publication were current at time of writing. This manual will not be updated. If in doubt about any aspect of maintenance or servicing of the axle please contact the vehicle builder or our service department directly.

SPICER® products are subject to continuous development and we reserve the right to modify procedures and to make changes in specifications at any time without prior notice and without incurring in any obligation.

The recommendations of the vehicle manufacturer should be considered as the primary source of service information regarding this **SPICER®** product. This manual is intended to be used as a supplement to such information.

Any references to brand names in this publication are made simply as an example of the types of tools and materials recommended for use and, as such, should not be considered as an endorsement.

This manual is the property of **Commercial Vehicle Products – Europe**, a division of **Dana Holding Corporation**, and may not be copied or disseminated without prior agreement of **Commercial Vehicle Products– Europe**, a division of **Dana Holding Corporation**.

Commercial Vehicle Products – Europe, a division of **Dana Holding Corporation**, recommends following all manufacturers recommendations for the proper handling and disposal of lubricants and solvents. For further information please contact the lubricants and solvents supplier.

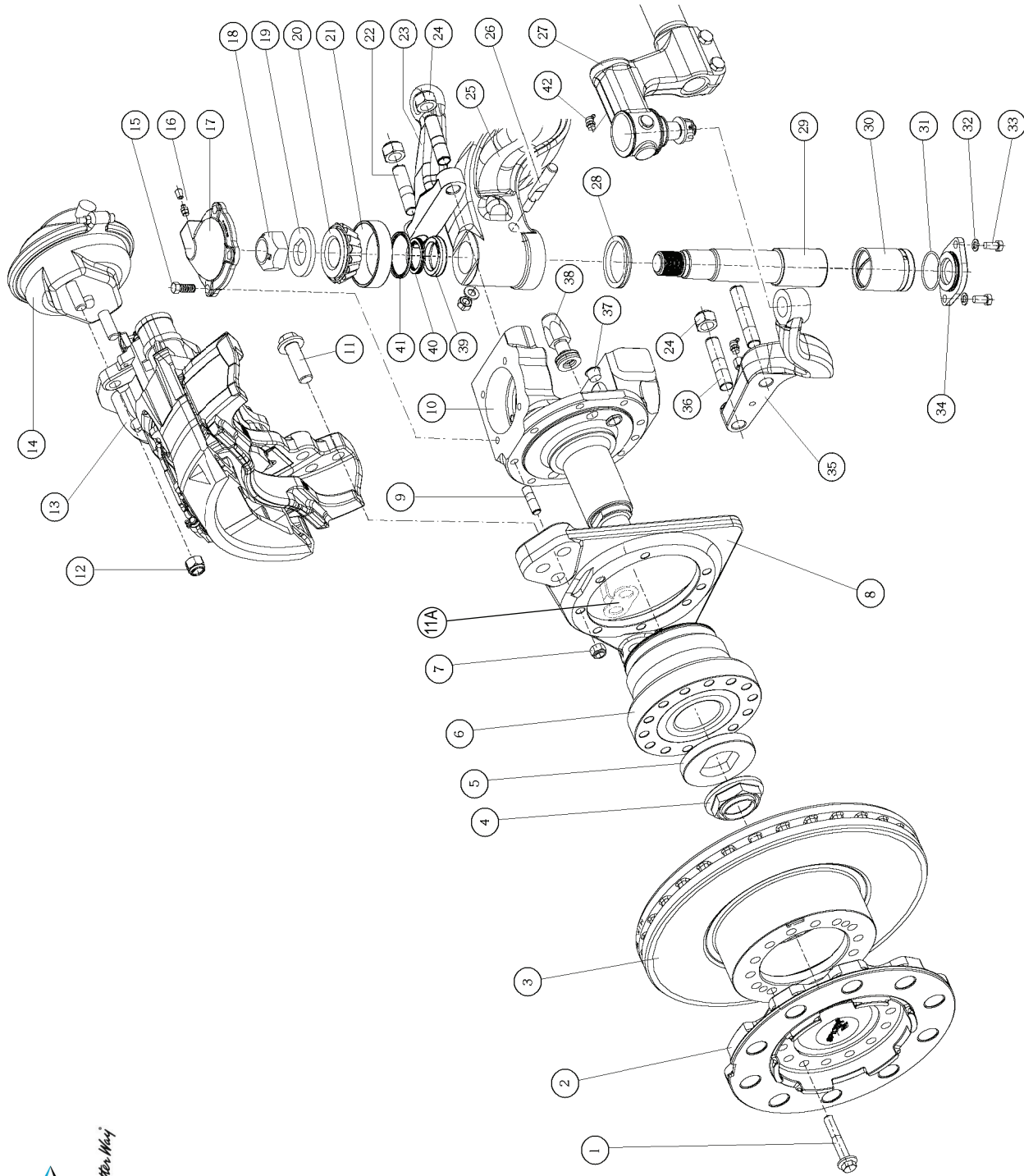
EVERY EFFORT HAS BEEN MADE TO ENSURE THE ACCURACY OF THE INFORMATION CONTAINED WITHIN THIS MANUAL.

HOWEVER, COMMERCIAL VEHICLE PRODUCTS – EUROPE, A DIVISION OF DANA HOLDING CORPORATION, MAKES NO EXPRESSED OR IMPLIED WARRANTY OR REPRESENTATION BASED ON THE ENCLOSED INFORMATION.

Last Modification	Date	Approved by	Date	Issue	Eng. Change
Released	21/08/12	CG	21/08/122	A	NC12486A



People Finding A Better Way



Dana Holding Corporation
Commercial Vehicle Products – Europe

Technical Publications CVPE © 2008 Dana Limited
for more information www.dana.com

IPL-0175 Rev. A

People Finding A Better Way

S84U K26929 Part List & Tightening Torques

Item	Part Number K26929	Description	Qty ⁰
1	F5064/55	Flanged Bolt	28
2	F4974/28	Hub	2
3	F4974/88	Brake Disc	2
4	F4567/77	Stake Nut	2
5	F4567/30	Coilet Washer	2
6	SL279/4	Hub Bearing	2
7	SL228/6	Nut - Self Lock	16
8	F5218/87	Brake Mounting Bracket L.H.	1
9	F5218/86	Brake Mounting Bracket R.H.	1
10	SL785/110	Stud	16
11	F4978/3	Knuckle L.H.	1
12	F4978/2	Knuckle R.H.	1
13	833175	Brake fixing - Bolt	12
14	F5169/116	Wear Sensor Clip	2
15	MX-1-1601	Nut - Self Lock	4
16	SM486/58K	Brake L.H.	1
17	SM487/100K	Brake R.H.	1
18	SM487/99K	Actuator L.H.	1
19	SL554/5	Actuator R.H.	1
20	SL1000/1	Screw	8
21	F4651/16	Lub Nipple (Straight)	4
22	F4477/15	Cap - Knuckle Top	2
23	7433/30	Nut - Self Lock ¹	2
24	833051	Washer (Collet) ¹	2
25	49849	Bearing Cone ¹	2
26	SL738/13	Bearing Cup ¹	2
27	SL738/23	Top Steering Lever - Stud L.H.	2
28	F4651/9A	Top Steering Lever - Stud R.H.	2
29	SL228/21	Top Steerin Lever	1
30	F4865/1	Nut - Self Lock	4
31		Beam - Axle	1

Item	Part Number K26929	Description	Qty ⁰
26	F4722/57	Drawkey ¹	2
	SL221/5	Drawkey - Nut ¹	2
	SL241/5	Drawkey - Washer ¹	2
	25990/5	Socket & Tie Rod Assy	1
	25977	Socket Assy R.H. ²	1
	25978	Socket Assy L.H. ²	1
	F4560/12	Tie Rod ²	1
	F4921/32	"V" Ring Seal ¹	2
	F4477/14	Kingpin ¹	2
	F4477/20A	Kingpin - Bushing ¹	2
	R3937/149	"O" Ring Seal ¹	2
	ML5710/1	Washer	4
	SL553/3	Screw	4
	F4477/34	Cap - Knuckle Bottom	2
	F4651/8	Bottom Steering Lever L.H.	1
	F4651/7	Bottom Steering Lever R.H.	1
	SL738/15	Bottom Steering Lever - Stud	2
	SL738/20	Bottom Steering Lever - Stud	2
	F4668/523	ABS Sensor - Bush	2
	F4693/44H	Back Lock - Stop Bolt	2
	F4693/44B	Front Lock - Stop Bolt	1
	F4477/19	Sleeve - Knuckle Bearing ¹	2
	4493/119	Shim .005" ¹	8
	4493/119A	Shim .010" ¹	8
	4493/119B	Shim .015" ¹	8
	4493/119D	Shim .008" ¹	4
	4493/119E	Shim .006" ¹	2
	F4477/32	Oil Seal ¹	2
	1001414	Grease Nipple (90°)	2

NOTES:

- ⁰ Quantities listed are for complete axle unit
- ¹ Available as a Service Kit: 10283/1; 10283/2; 10283/3 & 10283/4
- ² Comprising tie rod assembly: Item # 27 (see chart for specific part number)

ADDITIONAL INFORMATION (A1):

- A11 Lubrication Manual **613511**
- A12 Service Manual Disc Brake SN6.../SN7.../SK7.../NAT... **613512**

Item	Part Number	Description	Type	Torque (N.m)	Torque (ft-lbs)
1	F5064/55	Flanged bolt	M14 X 1.5	236 - 260	174 - 192
4	F4567/77	Stake Nut	1 3/4" - 8 UN	780 - 849	575 - 626
7	SL228/6	Nut - Self Lock	1/2" - 20 UNF	115 - 140	85 - 103
11	833175	Brake fixing - Bolt	M20 x 1.5	475 - 633	350 - 463
12	MX-1-1601	Nut - Self Lock	M16 x 1.5	180 - 210	133 - 155
15	SL554/5	Screw	7/16" - 20 UNF	69 - 84	51 - 62
18	F4477/15	Nut - Self Lock	1 3/8" - 12 UNF	678 - 949	500 - 700
24	SL228/21	Nut - Self Lock	3/8" - 16 UNF	386 - 427	285 - 315
26	SL221/5	Drawkey - Nut ¹	7/16" - 20 UNF	69 - 84	51 - 62
33	SL553/3	Screw	3/8" - 24 UNF	35 - 43	26 - 32
38	F4693/44H	Back Lock - Stop Bolt	3/4" - 16 UNF	115 - 140	85 - 103
	F4693/44B	Front Lock - Stop Bolt			

3/4-16 FL June 03 2013



Dana Holding Corporation

Commercial Vehicle Products – Europe
Dana Automoción S.A.
Polígono Industrial de Landaben, Calle E
31012 Pamplona / Spain
TEL (+34-948) 289 100 FAX (+34-948) 188 164

APPLICATION POLICY

Capability ratings, features and specifications vary depending upon the model type of service. Applications approvals must be obtained from Commercial Vehicle Products - Europe. We reserve the right to change or modify our product specifications, configurations, or dimensions at any time without notice.

People Finding A Better Way[®]