




## Volvo Remote Diagnostics

The following repairs are to address the following faults on US2014 and US2015 emissions level trucks:

DTC	Description	Possible Cause	Possible (Observable) Symptoms
P2084-64	Exhaust Gas Temperature Sensor - Post-DOC Rationality Check	Adjustment needed to logic used on the software monitor	

### Notes:

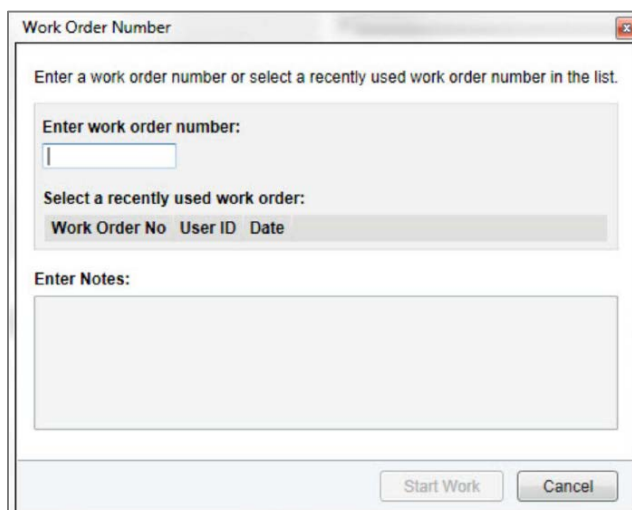
- This procedure is to update Engine Control Module to the latest available software

### **Required Tools:**

1. Premium Tech Tool version 2.03.79 or higher
2. Diagnostic Connector 88890304
3. Communication Interface 88890300 with firmware 1.12.0.2 or higher

### **Repair Instructions:**

1. Connect Premium Tech Tool (PTT) to the vehicle diagnostics connector using the 16 pin OBD cable 88890304 and Communication Interface 88890300. Connect the PC to a functional LAN or modem connection and a 120 Volt AC source.
2. Turn the ignition switch "ON".
3. Log in to PTT and Identify Vehicle is displayed. Once the vehicle has been identified, enter the Work Order Number information. Then click *Start Work*.



Work Order Number

Enter a work order number or select a recently used work order number in the list.

Enter work order number:

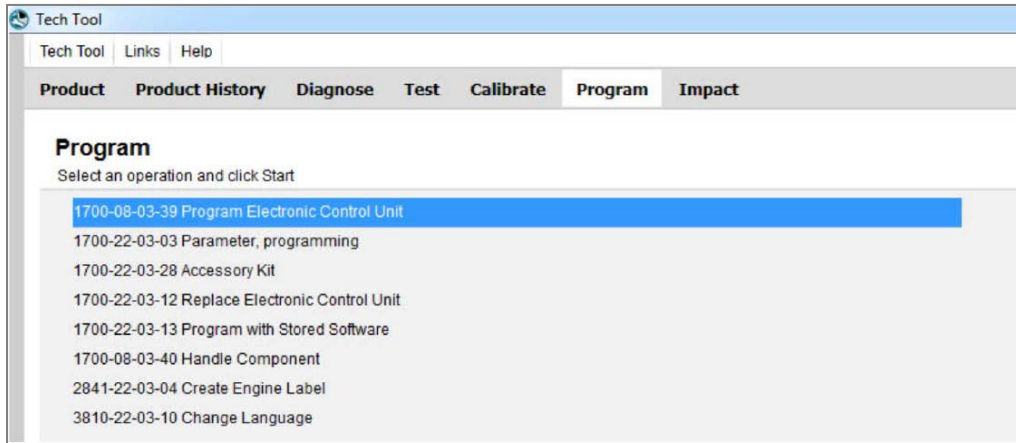
Select a recently used work order:

Work Order No	User ID	Date
---------------	---------	------

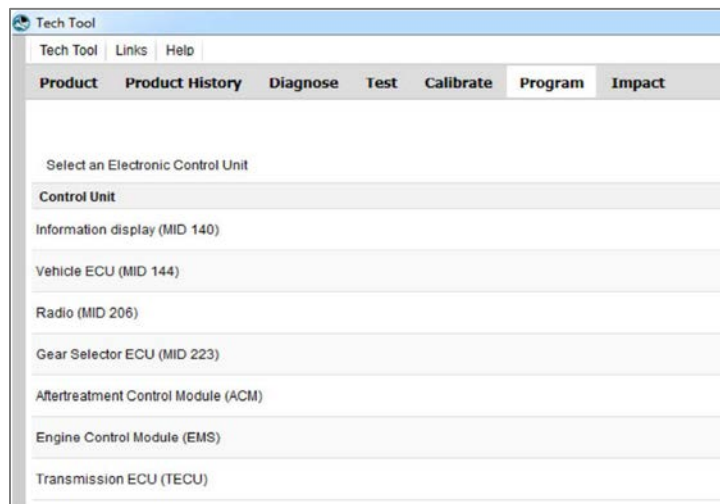
Enter Notes:

Start Work Cancel

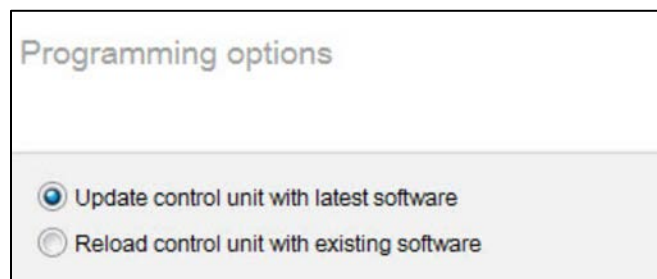
- From the Main Menu select *Program* and then *Program Electronic Control Unit 1700-08-03-39*. Then click *Start*.



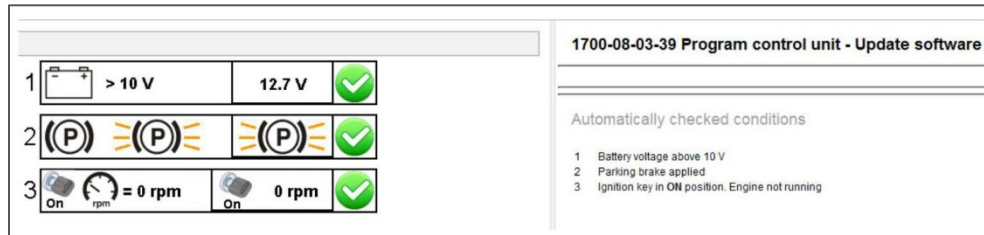
- Select the *Engine Control Module (EMS)* from the list.



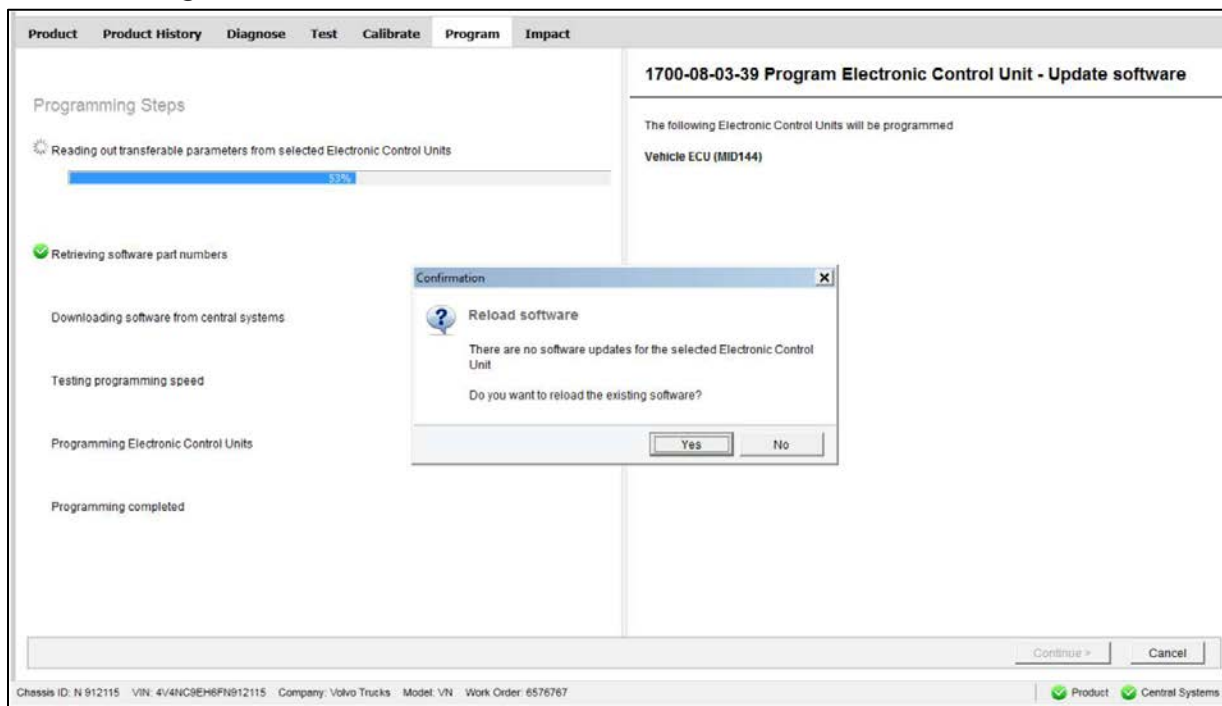
- Select *Program* to update the electronic control unit with the latest software.



- Certain conditions must be met to continue with programming: battery voltage above 10v, parking brake applied, and ignition key in ON position with engine not running. When all conditions have been met, click *Continue* to proceed with programming.



- If the software is already updated, this screen opens. Select Yes to reload existing software.



- When all programming is complete, clear any diagnostic trouble codes (DTC) and Finish Work.

**Reimbursement:**

<b>This repair is covered by an authorized Service Program. Reimbursement is</b>	<b>UHP Reimbursement</b>	<b>eWarranty Reimbursement</b>
<b>Claim Type (used only when uploading from the Dealer Bus. Sys.)</b>	W	W
<b>Labor Code</b>		
Primary Labor Code	2841-22-02-04 / 0.4 hrs	28403-0-01 / 0.4 hrs
<b>Causal Part</b>	3092091	3092091
<b>Parts Disposition</b>	N/A	N/A
<b>SCC Code</b>	N/A	N/A
<b>Authorization Number</b>	N/A	N/A
<b>Expiration Date</b>	N/A	N/A