



PREVOST

SAFETY RECALL

SR24-26

DATE :	April 2025	SECTION : 23 ACCESSORIES
SUBJECT:	BRIDGE PLATE REPLACEMENT	

First Release

04-25-2025

APPLICATION


NOTICE TO SERVICE CENTERS <i>Verify vehicle eligibility by checking warranty bulletin status with SAP or via ONLINE WARRANTY SYSTEM available on Service / Warranty tab of Prevost website.</i>	
Model	VIN 
H3-41, H3-45 coaches Model Year: 2005 - 2024	From 2PCH334935 <u>1010179</u> up to 2PCH33497 <u>RC722057</u> incl.
H3-45 VIP motorhomes Model Year: 2019	2PCVS3491 <u>KC710319</u>
XLII 45 coaches Model Year: 2005 - 2006	2PCX334945 <u>1028606</u> & 2PCX334946 <u>1028803</u>
X3-45 coaches Model Year: 2007 - 2024	From 2PCG334997 <u>1028863</u> up to 2PCG33498 <u>RC736982</u> incl.
X3-45 coaches Model Year: 2024	2P9G33490 <u>RC001600</u> 2P9G33492 <u>RC001601</u> 2P9G33494 <u>RC001602</u>
X3-45 coaches Model Year: 2015 - 2022	From 4RKG33495 <u>F9737000</u> up to 4RKG33493 <u>M9737767</u> incl.
X3-45 Commuter Model Year: 2012 - 2014	From 2PCG33495 <u>CC735053</u> up to 2PCG33498 <u>EC735602</u> incl.
X3-45 Commuter Model Year: 2015 - 2016	From 4RKG33497 <u>F9737001</u> up to 4RKG33491 <u>G9737299</u> incl.
X3-45 Commuter Model Year: 2017 - 2023	From 4RKJ33498 <u>H9737386</u> up to 4RKJ33496 <u>P9738096</u> incl.
This Safety Recall does not necessarily apply to all the above-mentioned vehicles. Some vehicles may also have been modified before delivery. The owners of the vehicles affected by this recall will be advised by a letter indicating the Vehicle Identification Number (VIN) of each vehicle concerned.	

DESCRIPTION

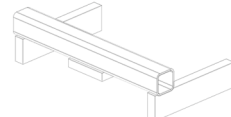
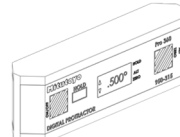
On vehicles affected by this recall, you must replace the wheelchair lift bridge plate by this new one to respect section 6.4.4.2 of FMVSS 403 and section 4.1.4 of FMVSS No. 404.

MATERIAL

Order kit **SR24-26** which contains the following part:

Part No	Description	Qty
869124	BRIDGEPLATE 	1

Special Tools needed:

Part No.	Description	Qty
G36115	SAFETY SUPPORT 	1
	DIGITAL PROTRACTOR 	1

NOTE

Material can be obtained through regular channels.

SAFETY PRECAUTIONS

- Eye protection should always be worn when working in a shop.
- Rules for Personal Protection Equipment should always be respected. Wear your PPE including but not limited to the following:



Safety First!



PROCEDURE



DANGER

Park vehicle safely, apply parking brake, stop the engine. Prior to working on the vehicle, set the ignition switch to the OFF position and trip the main circuit breakers equipped with a trip button. On Commuter type vehicles, set the battery master switch (master cut-out) to the OFF position.

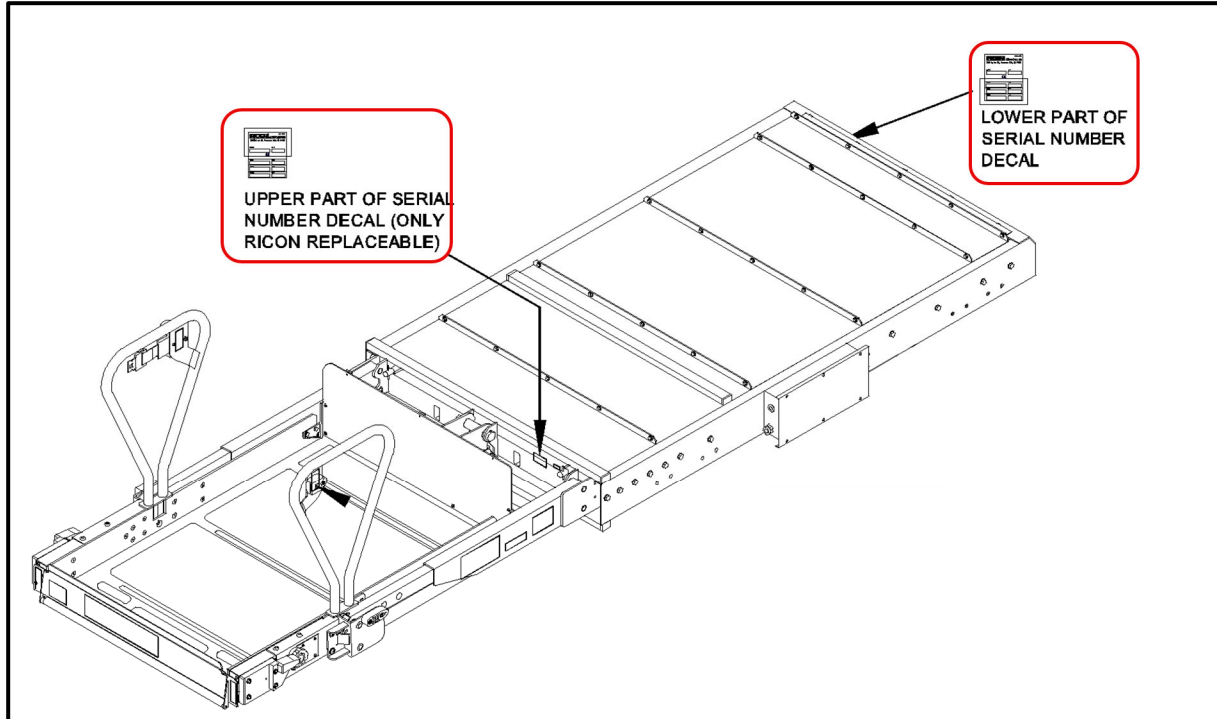
Lockout & Tag out (LOTO) must be performed during set-up, maintenance or repair activities. Refer to your local procedure for detailed information regarding the control of hazardous energy.

WHEELCHAIR LIFT SERIAL NUMBER

- 1) **MANDATORY**. Record Wheelchair Lift serial number. Record this information on the repair order (DMS, SAP) else, when proceeding the claim through Online Warranty System, record this information in the text box.

WCL S/N: _____

Where to find the decals showing WCL serial number:

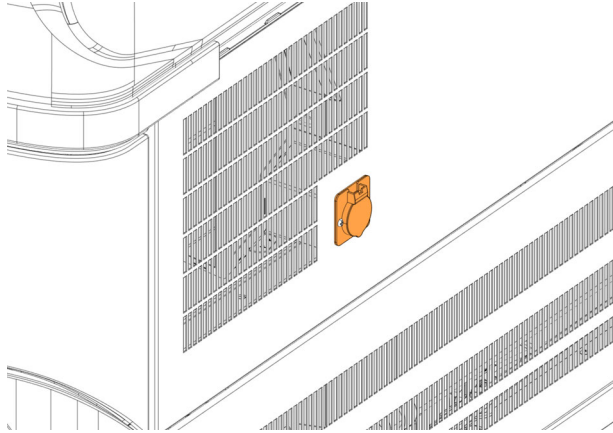


RICON® CORPORATION	
7900 Nelson Road, Panorama City, CA 91402	
mfd. date:	Made in U.S.A.
model	s.n.
<input style="width: 100%;" type="text"/>	<input style="width: 100%;" type="text"/>
CE	
model	s.n.
<input style="width: 100%;" type="text"/>	<input style="width: 100%;" type="text"/>
model	s.n.
<input style="width: 100%;" type="text"/>	<input style="width: 100%;" type="text"/>
model	s.n.
<input style="width: 100%;" type="text"/>	<input style="width: 100%;" type="text"/>

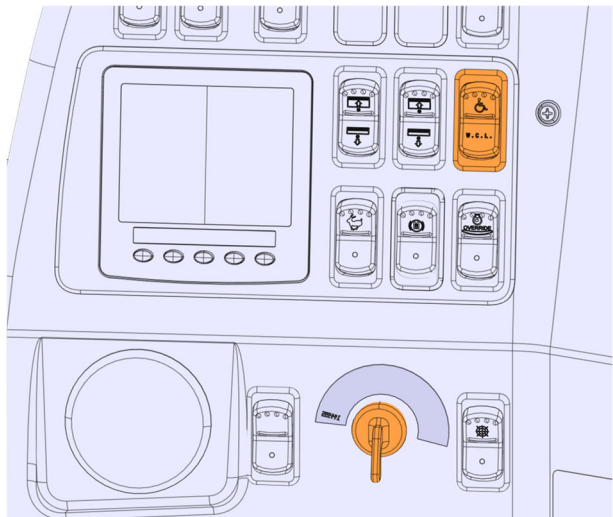
RICON® CORPORATION	
7900 Nelson Road, Panorama City, CA 91402	
mfd. date:	Made in U.S.A.
model	s.n.
<input style="width: 100%;" type="text"/>	<input style="width: 100%;" type="text"/>
CE	
model	s.n.
<input style="width: 100%;" type="text"/>	<input style="width: 100%;" type="text"/>

BRIDGE PLATE REPLACEMENT

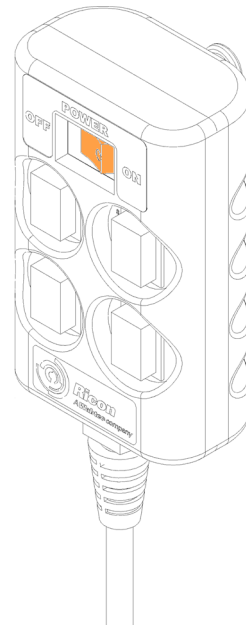
1. Locate the right rear battery charger connector.
2. Connect battery charger.



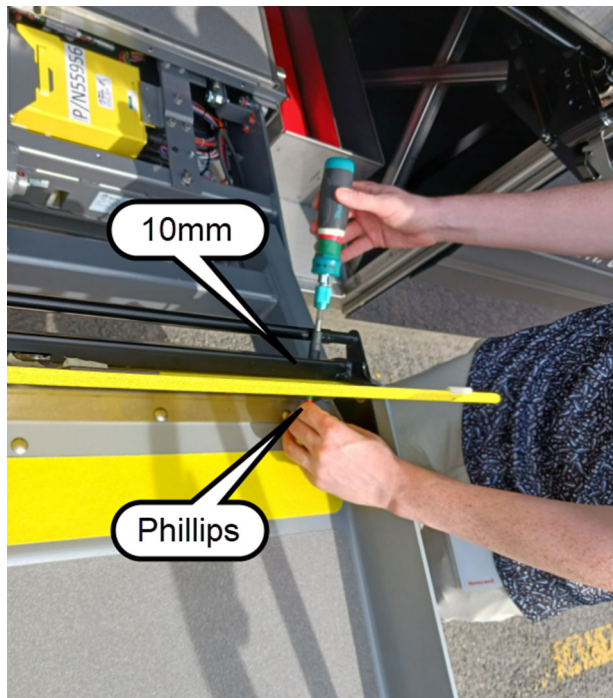
3. Turn on the ignition switch.
4. Turn on the WCL switch.



5. Turn on the WCL remote control.



6. Deploy platform.
7. Install the guard and belt buckle.
8. Raise the platform for reaching height ideal to work.
9. Remove the screws (6x) and the bridge plate.
10. Discard the bridge plate.



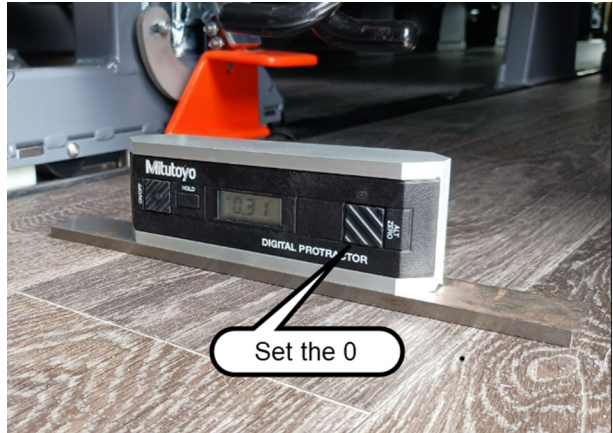
11. Apply red thread locker on two screws see the image for the location.
12. Install the new bridge plate 869124.



BRIDGE PLATE ANGLE VALIDATION

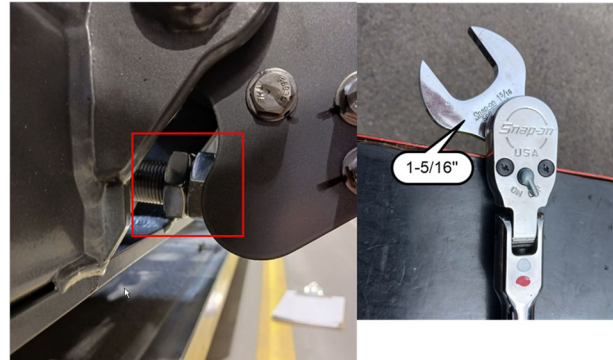
1. Raise up the platform to reach the wheelchair entrance door.
2. Use a digital protractor to measure the angle.
3. Validate the angle of the bridge plate:
 - If the angle is between 6.9 and 7.1 this is OK.
 - If the angle exceeds 7.1 go to angle correction section

Note: **The angle must never exceed 7.1 degrees (regulatory requirement)**

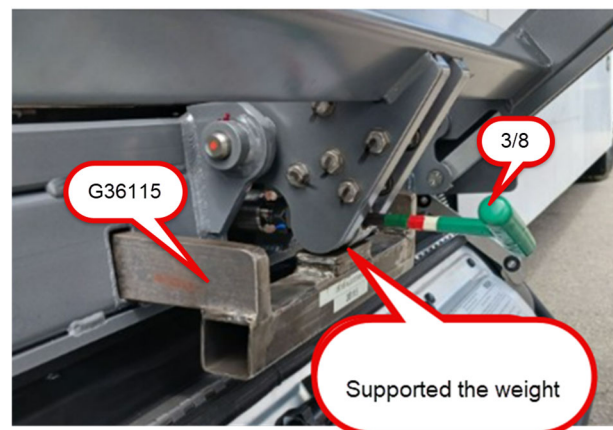


ANGLE CORRECTION

1. Unlock the lock nut.
 - 1 1/8 for lift rate 660lbs
 - 1 5/16 for lift rate 800lbs



2. Install the tool G36115.
3. Push down until the weight of the platform is supported by the tool G36115.
4. Adjust the degree of the platform (Allen 3/8) 1/4 turn equal 1.5 degrees.
 - CW to increase
 - CCW to decrease
5. Test the adjustment until you reach the right angle.

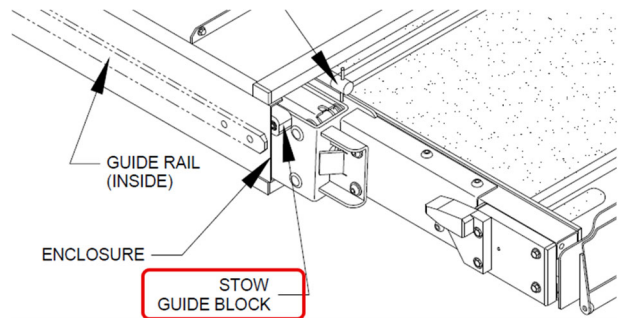


6. Lock the position.
 - 1 1/8 for lift rate 660lbs
 - 1 5/16 for lift rate 800lbs
7. Apply a torque of 43 lb-ft.

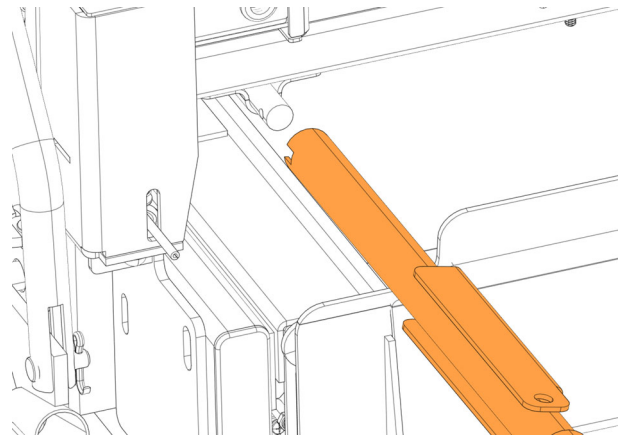


STOW HEIGHT ADJUSTMENT

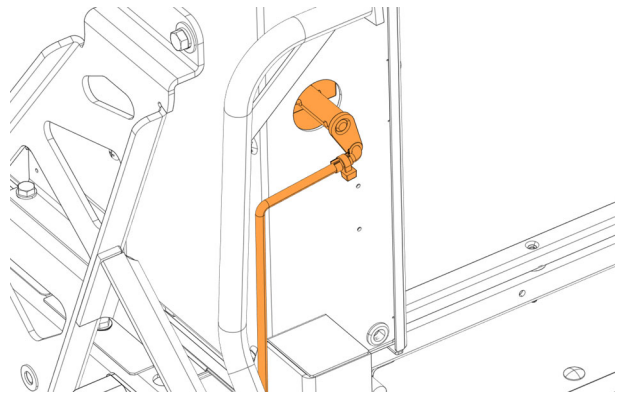
1. Stow the platform until you see the Stow Block at the end of the rails.



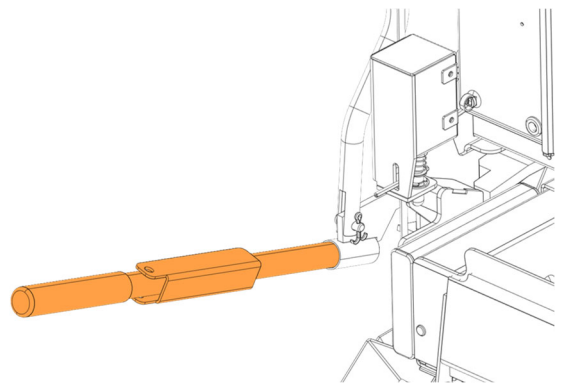
2. Unlock the platform.



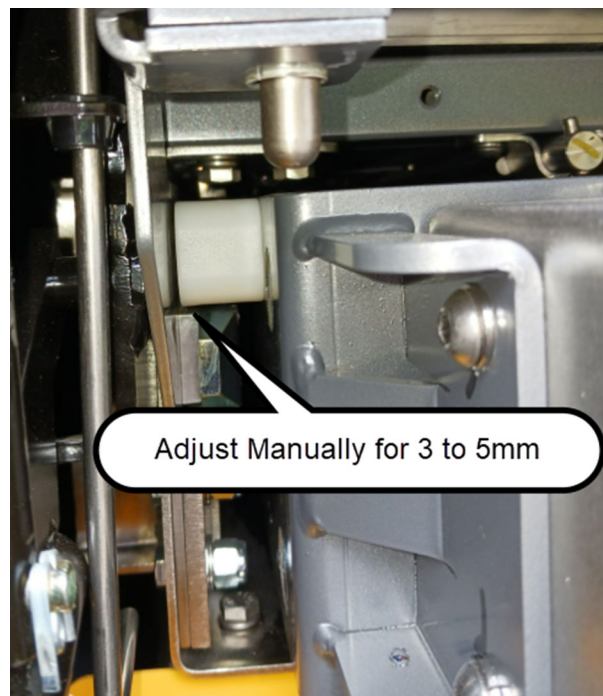
3. Release the pressure.



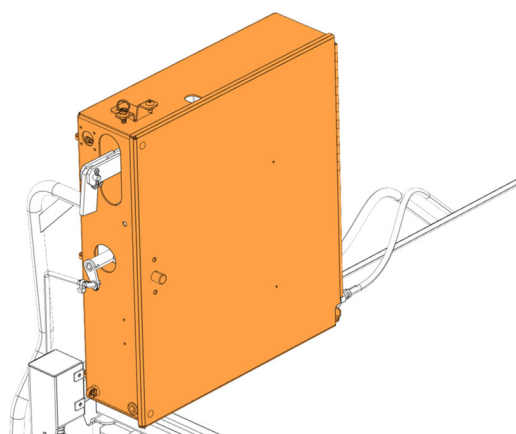
4. Manually deploy the platform until the stow bloc is outside the rail.
5. Manually stow until the bloc is on the rails again.



6. Confirm the stow height bloc adjust to 3mm to 5mm above the rail.
7. Readjust if necessary.
8. Manually fully deploy the platform. The platform automatically lock.



9. Locate the programming button inside the pump box.



10. Remove the cap and connect the programming button to the controller.



11. Press **"DEPLOY"** 3 times of the remote.



12. Press and hold the programming red button for 12 seconds.

13. Remove programming button and reinstall the cap.



14. Perform this sequence with the remote:

- Press **"UP"** and move up 12 inches.
- Press **"STOW"** and stow 6 inches.
- Press **"DEPLOY"** and fully deploy.
- Press **"DOWN"** and lower 12 inches.
- Press **"STOW"** and stow 6 inches.
- Press **"DEPLOY"** and fully deploy.
- Press **"UP"** and move up 12 inches.
- Press **"STOW"** and stow 6 inches.
- Remove guards and buckle.
- Press **"STOW"** and stow completely.

Note: If platform refused to stow, SEE STOW PRESSURE SWITCH ADJUSTMENT section.

15. Perform a completed cycle.

The Stow Bloc must be above the rails between 0MM to 5MM.



STOW PRESSURE SWITCH ADJUSTMENT

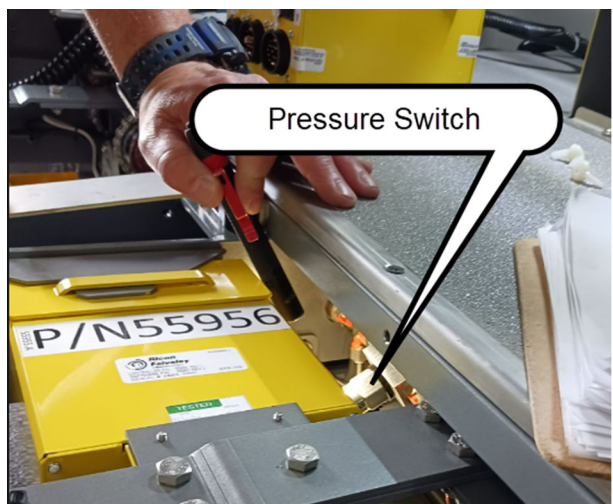
1. Press "**DOWN**" until the platform is on the ground.
2. Install a 15 pounds weight on the center of the platform.



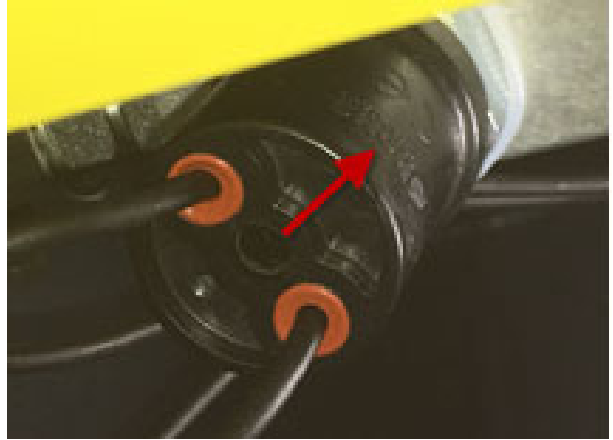
3. Press "**STOW**" until the platform is on the ground.



4. If platform don't Stow turn adjusting screw CW 1/16 turn and test.
Note: Allen 1/8" or 5/32"

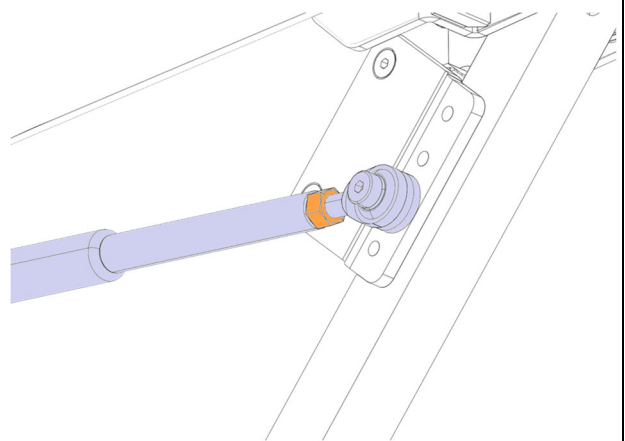
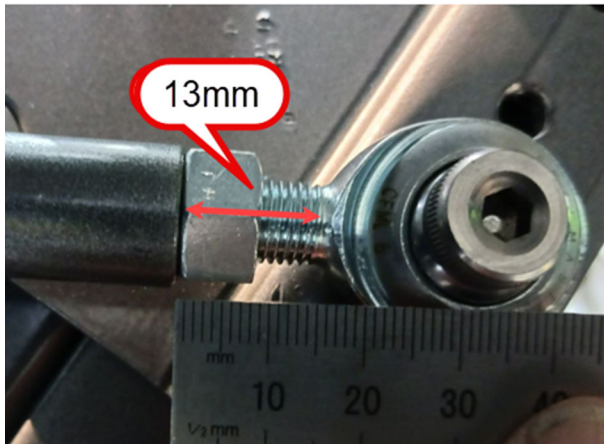


5. If the platform oscillates when is stow, turn adjusting screw CCW 1/16 turn and test.



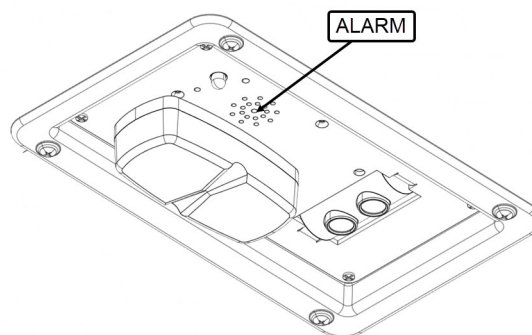
ACTUATOR RODS ADJUSTMENT

1. Adjust the bridge plate rods to 13mm. This adjustment ensures that there is no interference during deployment and ensures that the bridge plate remains supported on the ground when a load of 600lbs is applied to the center of the platform.



SETUP THE WARNING UNIT

The alarm should go off when the platform is at its highest point



1. The platform must be fully up.
2. Remove the cap and connect the programming button to the controller.



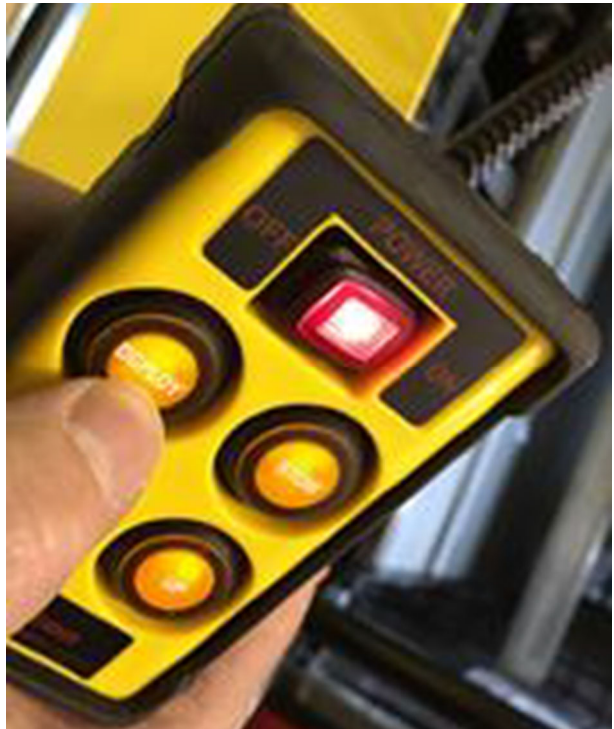
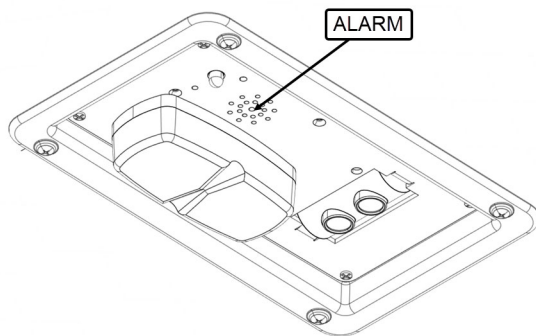
3. Press "**DEPLOY**" 3 times of the remote.



4. Press and hold the programming red button for 12 seconds.
5. Remove programming button and reinstall the cap.



6. Press and maintain “UP” until the alarm shut off.



VERIFY THE BRIDGE PLATE SAFETY SWITCH

1. The platform must be fully up.



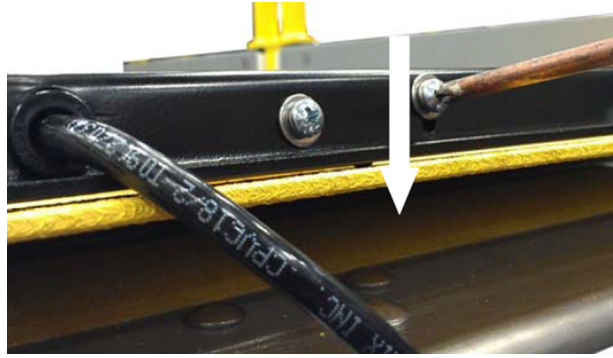
2. Apply 25lbs or more on the bridge plate.



3. Press **"DOWN"**:
 - If the platform not descend, this is OK
 - If yes got to the next step.



4. Adjust the microswitch.



PARTS DISPOSITION

All replaced parts must be returned to Prevost according to the Return Shipping Instructions available on www.prevostcar.com (under service / warranty section) for full reimbursement. A copy of the warranty claim form must be enclosed with the shipment.

Discard waste according to applicable environmental regulations (Municipal/State[Prov.]/ Federal)

WARRANTY

This modification is covered by Prevost's normal warranty. We will reimburse you the parts and one hour and half (1.5) of labor upon receipt of a completed A.F.A. Please submit claim via our Online Warranty System, available at www.prevostcar.com (under service \ warranty section).

- Use Claim Type: "Bulletin/Recall" and select "Safety Recall SR24-26".

OTHER

VBC Bulletin	N/A
Fail Code	25.00
Defect Code	09
Syst.Cond	R
Causal Part	863097

Access all our Service Bulletins on
<http://techpub.prevostcar.com/en/>

or scan the QR-Code with your smart phone.

E-mail us at technicalpublications_prev@volvo.com and type "ADD" in the subject to receive our warranty bulletins by e-mail.



**PREVOST**

Safety Recall Certification Sheet (Ref: SR24-26)

VEHICLE SERIAL NUMBER:

--	--	--	--	--	--	--	--	--	--	--	--	--	--	--	--	--	--

PERFORMED BY		OWNER/OPERATOR	
We hereby certify that Safety Recall Instructions regarding Safety Recall SR24-26 have been performed.			
Name: _____		Name: _____	
Addr: _____		Addr: _____	
Phone: _____		Phone: _____	
Fax: _____		Fax: _____	
Signature: _____	_____	Signature: _____	_____
Date: _____	_____	Date: _____	_____

If the information mentioned above is incorrect or you are not the owner of this vehicle anymore, please fill this section and return to sender.

NEW OWNER:**BUSINESS:****ADDRESS (including County):****TELEPHONE:** _____**FAX:** _____

Please return this completed document with your A.F.A. form